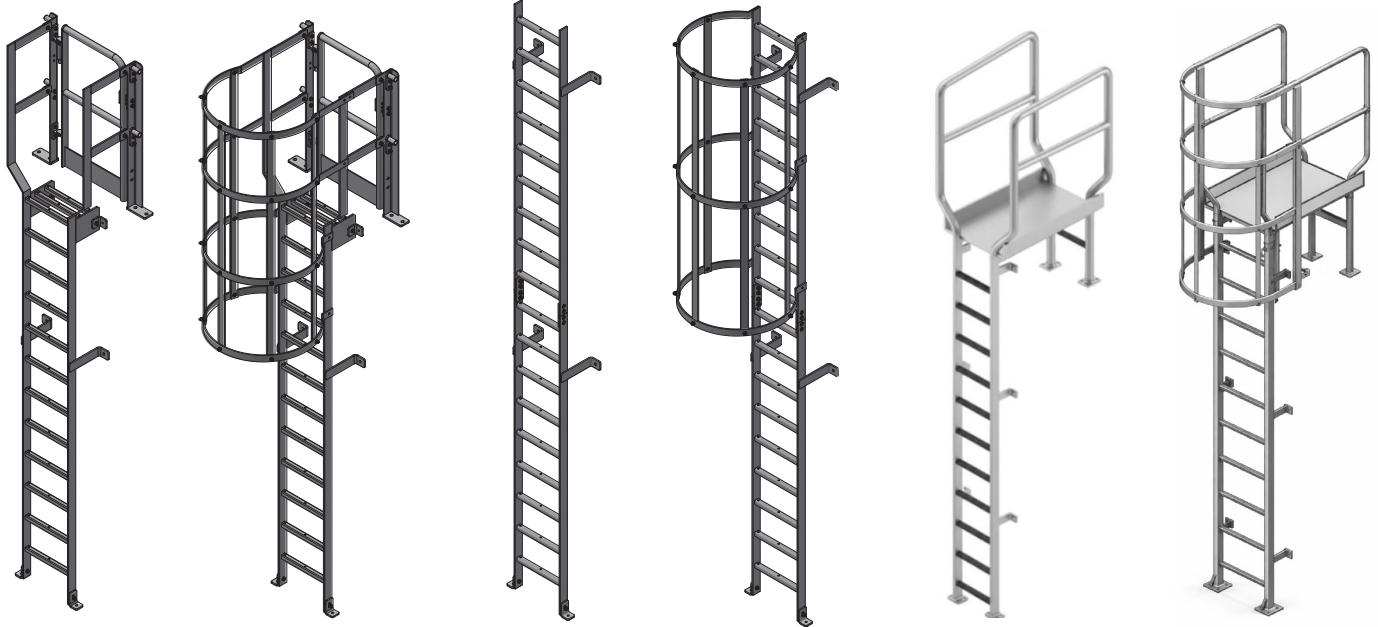


# Fixed Access Ladders



**ASLSG:**

Standard Ladder with Safety Gate

**ASSLCSG:**

Standard Ladder with Cage and Safety Gate

**ASSL:**

Standard Ladder

**ASSLC:**

Standard Ladder with Cage

**ASLPWT:**

Standard Ladder with Platform Walkthrough

**ASLCPWT:**

Standard Ladder with Cage and Platform Walkthrough

## Table of recommended Ladder Sections & Fixing Centres

Section of Stringer (Mild Steel)	Max. Spacing of Stays or Fixings	
	Vert. Ladders	Sloping Ladders
65 x 10 Flat	3.7	3.1
65 x 12 Flat	4.1	3.5
79 x 19 Flat	4.0	3.4
70 x 12 Flat	4.4	3.7
80 x 10 Flat	4.6	3.9
80 x 12 Flat	5.0	4.2
75 x 50 x 8 Angle	4.8	4.1
100 x 65 x 8 Angle	6.2	5.2
125 x 75 x 10 Angle	7.7	6.5

Fixing centres of stays indicated are based on good connections to steelwork. For fixings to good sound brickwork or concrete divide stated centres by 1.5.

## Notes

1. The clear width between stringers should be between 300mm & 600mm with a preferred clear width of 400mm. Before a shorter clear width is used a check should be carried out to see if there is a more favourable position for the ladder allowing a clear width of 400mm or more.
2. The maximum open area between hoops and straps shall be no more than 0.4m<sup>2</sup>
3. Where a single ladder does not form part of a series of ladders then the maximum height can be increased to 10000mm.

# Fixed Access Ladders



## Material

All components and accessories can be manufactured from high-grade mild steel, structural aluminium or stainless steel with options for powder coating.

## Dimensions

- Overall ladder width – 605mm
- Distance between stiles – 525mm
- Rung diameter – 50 x 35mm (profiled)
- Rung spacing – 300mm
- Stile extension above landing surface – 1100mm
- Minimum clearance behind ladder – 200mm (vertical position)
- Maximum distance between rest platforms – 6M

## Characteristics

- Modular Design
- Lightweight
- Strong & Durable

## Quality Assurance

All Steelway components are manufactured by our ISO-9001 certified partners. Steelway recognise the importance of all products being consistent in quality and regularly inspects the production process to ensure best quality products are produced.

## Weight

- Ladder body sections – 2.9kg/M (excludes fixing brackets and fixings)
- Cage sections – 8.3kg/M

## Working Load Limit

- Recommended for single person use – 150kg rated.
- Industrial rated, suited to high frequency usage.
- Support structure integrity, suitability and fixing method to be assessed and determined by an engineer unless it is clear to a competent person prior to installation.

## Compliance

Our Steelway Ladder System is designed to comply with requirements of BS4211:2005 & BS EN ISO 14122-4:2016 and relevant statutory HSE guidelines.

## Product Warranty

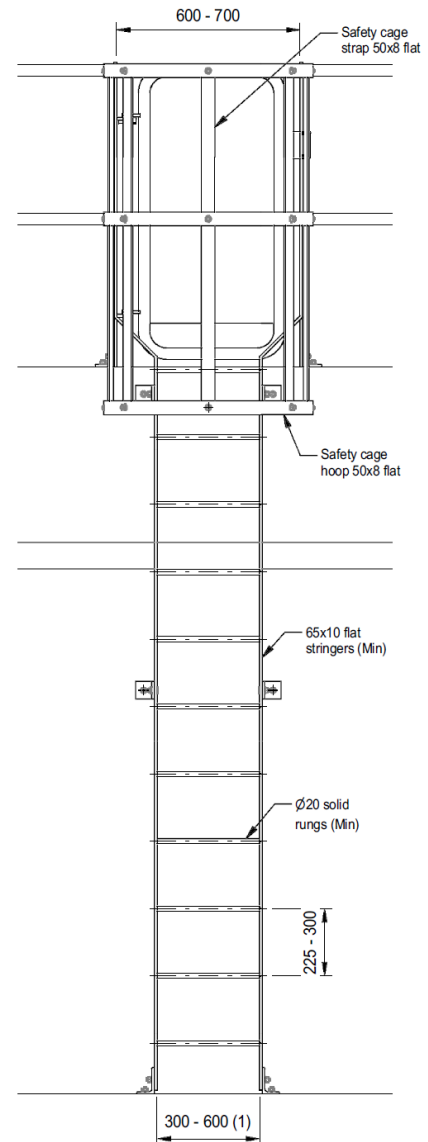
25 years from date of purchase subject to correct installation, use and maintenance, in accordance with manufacturer’s specifications and recommendations.

## Inspection & Maintenance

Inspection and certification required every 12 months by competent person, in accordance with manufacturer’s specification and relevant HSE statutory guidelines.

## Important Notes

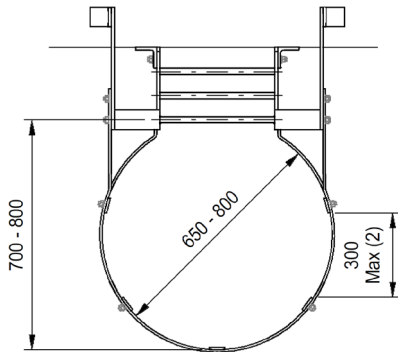
Failure to supply and/or install proprietary product in accordance with above standards and codes, specifications and instructions, voids complete system certification and/or warranty.



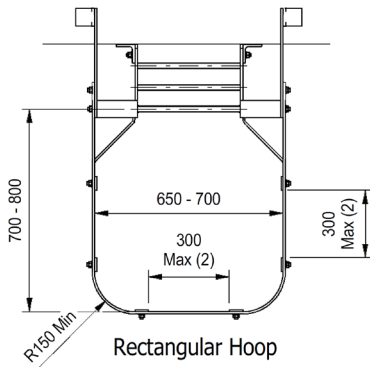
## Safe & Compliant Access Design Reference

Angle Range	Application	Guidance
75° - 90°	Standard Fixed Ladders	Recommended for fixed vertical access
65° - 75°	Ship Ladders	Used where space is limited
50° - 65°	Steep Access	DANGER - Avoid where possible
30° - 50°	Staircases	Preferred for regular pedestrian use
15° - 30°	Shallow Access	Avoid - transition zone
0° - 15°	Ramps	Suitable for wheeled and assisted access

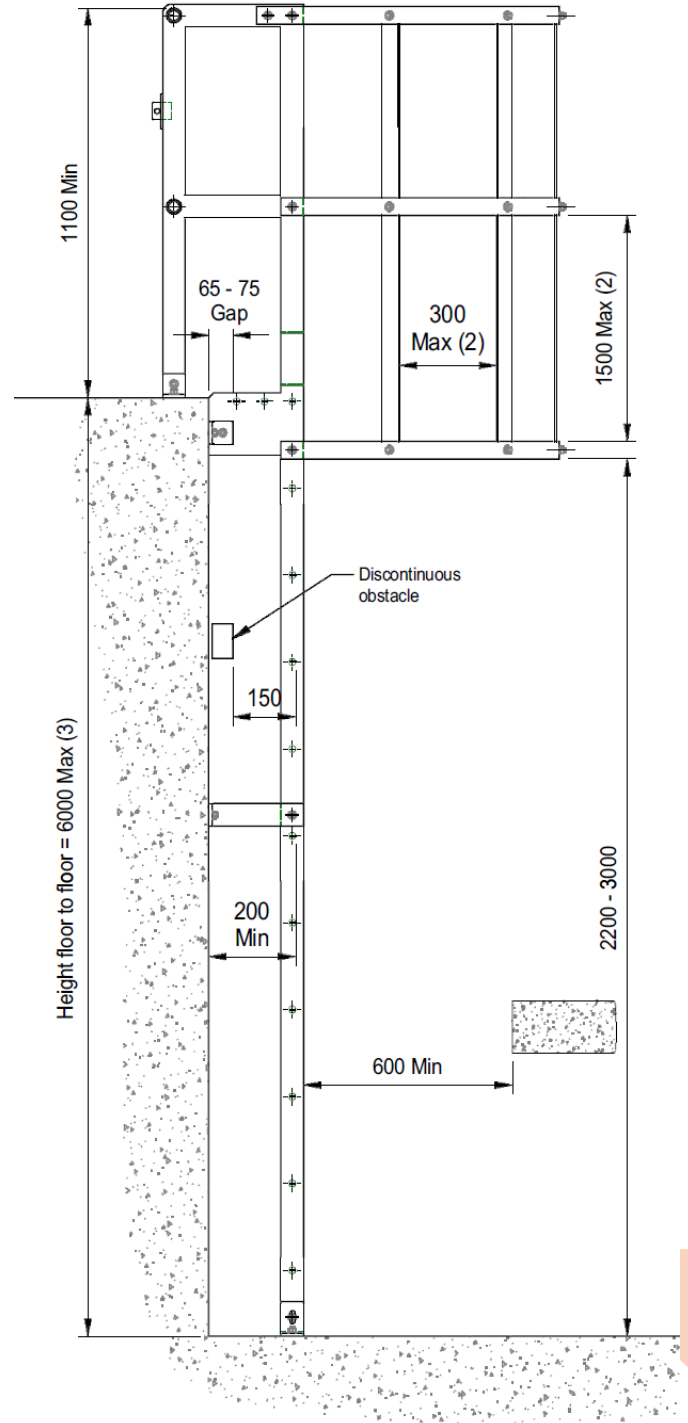
# Fixed Access Ladders



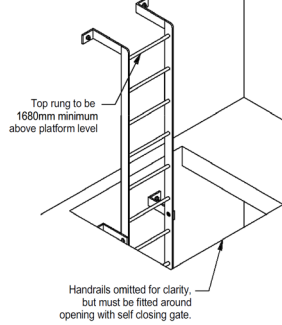
Circular Hoop



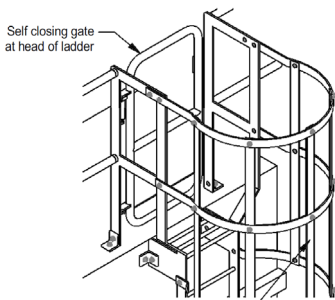
Rectangular Hoop



LADDER WITH EXTENDED SIDES TYPE 'B'

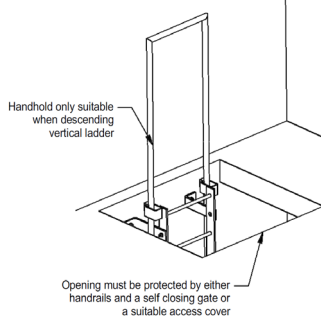


LADDER WITH EXTENDED SIDES TYPE 'A' (Extended sides can be top or side fixed)



Safety cage required when the climbing height of the ladder is more than 2000mm or if the height is less than 2000mm but there is a risk of falling a total distance of more than 2000mm.

LADDER WITH RETRACTABLE TUBULAR HANDHOLD TYPE 'D'



Queensgate Works, Bilston Road, Wolverhampton, West Midlands, WV2 2NJ

+44 (0) 1902 451 733 sales@steelwayaccessandsafety.co.uk www.steelwayaccessandsafety.co.uk

