

# Insulated Single Flap Opening Unit | Louvre Ventra



## Product Features:

This single-flap smoke vent enables rapid removal of warm air or smoke, while providing daily ventilation and natural daylight. Compatible with various kerbs and domes, it suits different roof configurations.

Made from corrosion-resistant aluminium, it meets EN ISO 9001 and EN 12101-2 standards. Pneumatic or electric actuation is available. Ideal for stairwell fire protection, it can also serve as roof access and comes in variable sizes.

## Typical Applications:

Suitable for horizontal and pitched roofs up to 15°, it can be installed directly on roofs or within barrel vault daylighting systems. Especially ideal for warehouses and logistics centers.

## Materials:

Tempered aluminium (EN AW 5754), resistant to seawater and corrosion, with corrosion-resistant bearings. Sealant prevents freezing while maintaining low air permeability.

*Note: Aluminium is supplied untreated as standard, with the option of electrostatic powder coating in any RAL colour.*

## Dimensions:

Roof opening widths: 800–1300mm; lengths: 1000–1400mm. Custom dimensions available on request.

## Roof Access:

Access to the roof through the SHEV or ventilation system.

## Weight:

Depends on the dimensions and type of infill.



## Opening Angle:

140, 150 and 160 degrees.

## Controls Fire Ventilation:

M24V: Electric motor

P2F: Opening and closing by double-acting pneumatic cylinder with thermofuse.

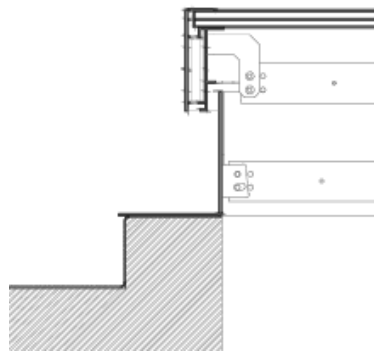
# Insulated Single Flap Opening Unit | *Louvre Ventra*



**Flaps:**

- AL** Single aluminium (1)
- AL ISO** Double insulated aluminium (20 and 50mm) (1)
- PC16** Polycarbonate 16mm, clear or opal
- PC25** Polycarbonate 25mm, clear or opal
- PC32** Polycarbonate 32mm, clear or opal
- TB** Thermal break in the aluminium profiles. (Available for flaps of AL, ISO, PC25mm)

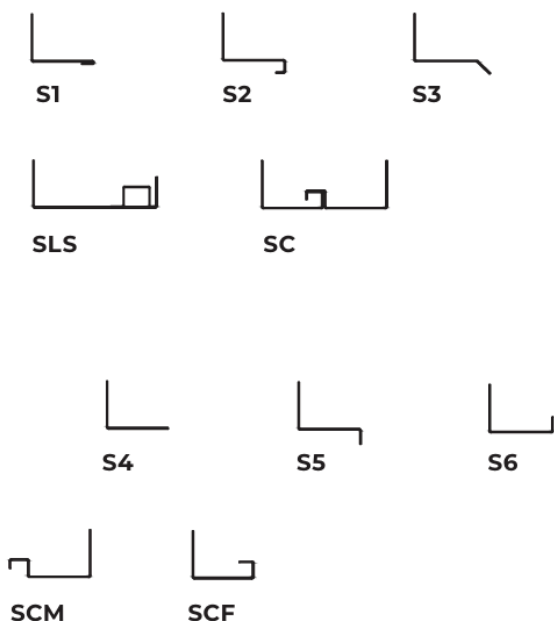
(1) - Aluminium sheet limited to one dimension at 1400 mm (width or length).



*Detail 01*

Double wall insulation and TB, thermal break in the aluminium base. Other non standard bases available upon request.

**Bases:** Single aluminium. Double wall aluminium with insulation.

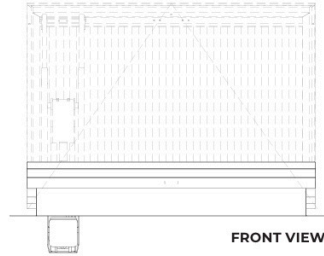
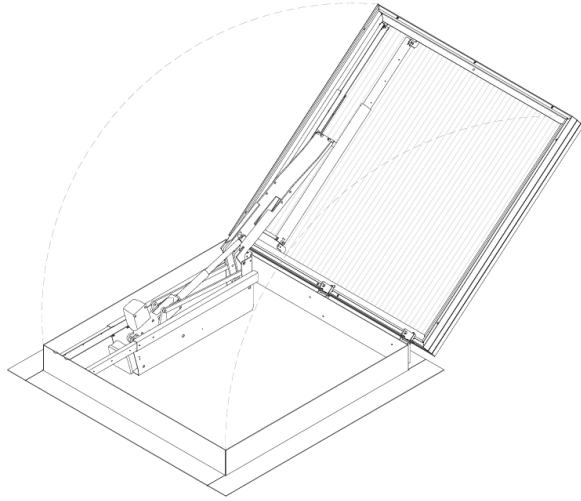


**Flanges:**

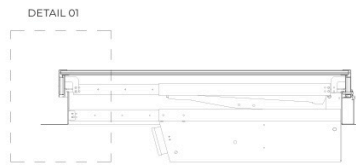
- S1 Flange for single glass.
- S2 Flange for double glass.
- S3 Flange for roofs, 45 degree bended.
- S4 Flange for roofs and facades
- S5 Flange for upstand, 90 degree bended downwards
- S6 Flange for 90 degree bended upwards
- SLS Flange for skylight connection, for different polycarbonate thickness.
- SC Flange for connection with other flange (vents connection). Male or female connection.

\* Custom flange design and insulated flanges upon request

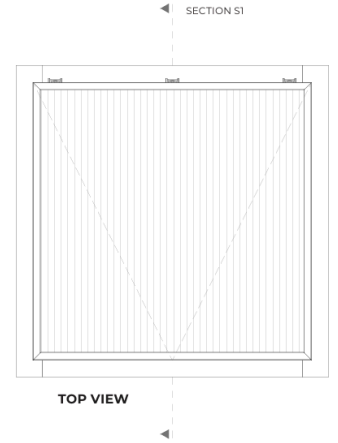
# Insulated Single Flap Opening Unit | *Louvre Ventra*



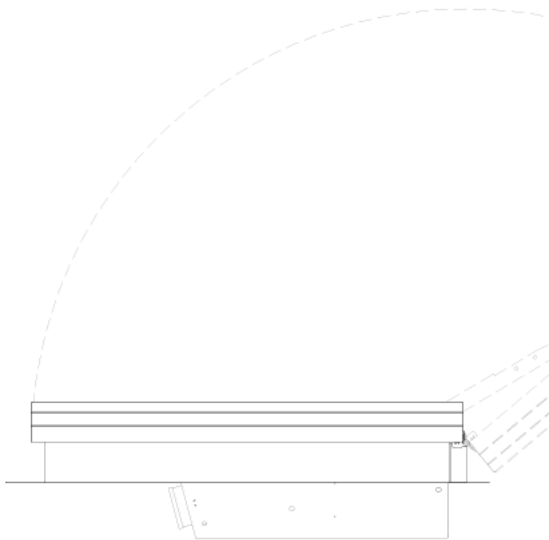
FRONT VIEW



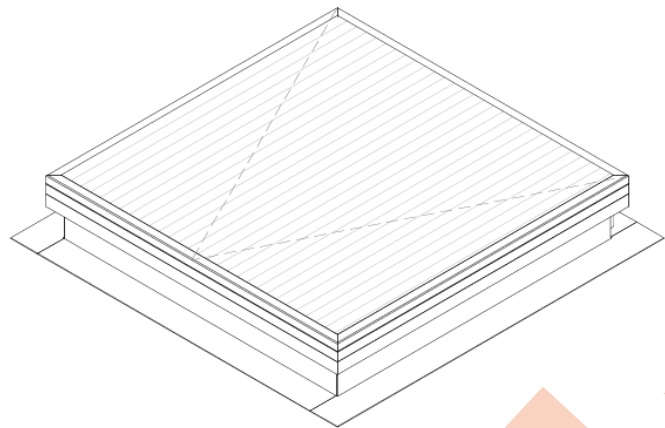
SECTION S1




TOP VIEW




SIDE VIEW



PERSPECTIVE VIEW

 Queensgate Works, Bilston Road, Wolverhampton, West Midlands, WV2 2NJ

 01902 451 733  [sales@steelwayaccessandsafety.co.uk](mailto:sales@steelwayaccessandsafety.co.uk)  [www.steelwayaccessandsafety.co.uk](http://www.steelwayaccessandsafety.co.uk)

 Part of  
**NORTHERN  
INDUSTRIES** Group.