

Uninsulated Multi-Louved Vent | Louvre Ventra



Product Features:

Our multi-louved ventilator is designed to provide a cost effective, non-powered solution for natural ventilation. It allows rapid removal of large volumes of warm air and/or smoke and is suitable for facade air intake, facade and roof extraction, as well as natural daylighting.

Manufactured to ISO 9001 standards from high-quality, corrosion-resistant aluminium, it offers durability, watertightness and low maintenance. Operation is available via pneumatic cylinder, electric motor or combined system. Units are available in sizes up to 2400 x 3826mm (width x length).

Typical Applications:

Suitable for installation on both roofs and facades, with adjustable angles from 0 to 90 degrees. Typical applications include industrial buildings, warehouses, logistics centres, shopping centres, atriums and similar environments.

Materials:

Manufactured from tempered aluminium (EN AW 5754), offering excellent resistance to seawater and corrosion. The unit includes corrosion resistant bearings and integrated hydrophobic weatherproof sealing tape for enhanced protection.

Note: Aluminium is supplied untreated as standard, with the option of electrostatic powder coating in any RAL colour.

Dimensions:

Roof opening widths range from 300mm to 2400mm, while opening lengths span 746mm to 3826mm (up to 17 louvres maximum).

Regulations:

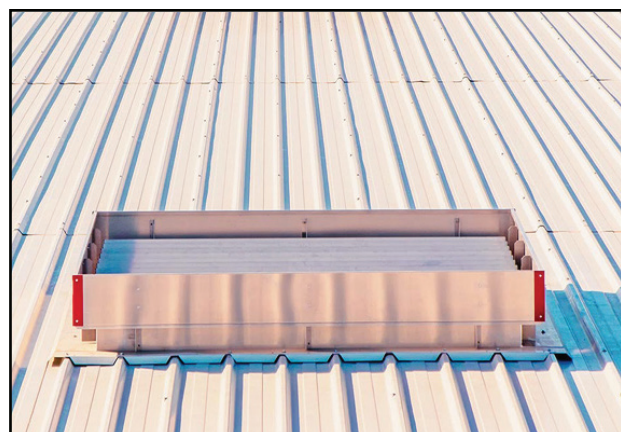
Certified to EN 12101-2 and compliant with French standards NF S 61 937 (NSHEV and natural air inlet devices), VENTRA is also ATEX certified in accordance with Directive 2014/34/EU.

Weight:

Depends on the dimensions and type of infill.

Options:

Custom dimensions, Powder-coated design (any RAL colour), Bird or insect mesh, Thermofuse 68/ 93/ 141 degrees celsius, available in tout temps version.



Installation Angle:

Installation angle from 0 up to 60 degrees.

Controls Natural Ventilation:

M230V: Electric motor
 P1: Single pipe compressed operation
 P2: Double pipe compressed air operation
 Combination Set: P1 + 230 V or P2 + 230 V

Controls Fire Ventilation:

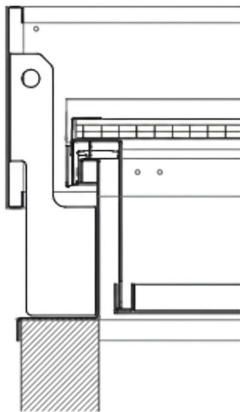
M24V: Electric motor
 P1: Single pipe compressed air operation with fire function
 P2: Double pipe compressed air operation with fire function

Uninsulated Multi-Louved Vent | Louvre Ventra

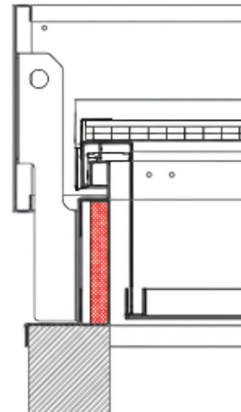


Louvers:

- AL** Single aluminium U-Value=
- AL ISO** Double insulated aluminium, U-Value=
- PC16** Polycarbonate 16mm, clear or opal. U-Value=1,77 (W/(m2.k))
- GLASS** Single glass 6mm. U-Value = 4.71 W/m2K

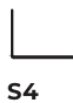
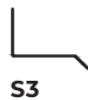
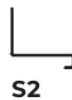


Detail 01
Single aluminium.



Detail 02
Double wall aluminium with insulation.

Bases: Single aluminium. Double wall aluminium with insulation.

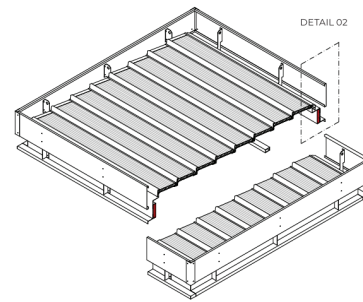
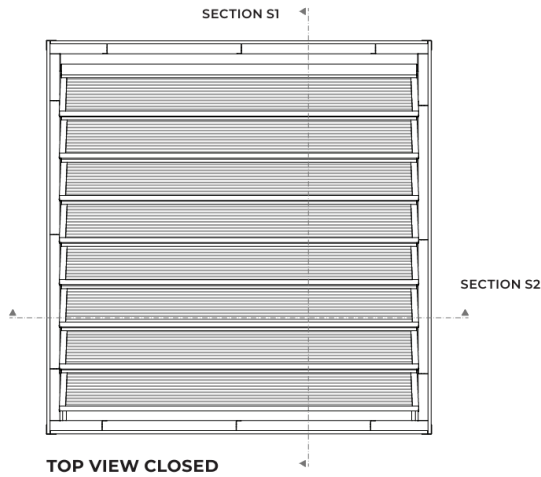


Flanges:

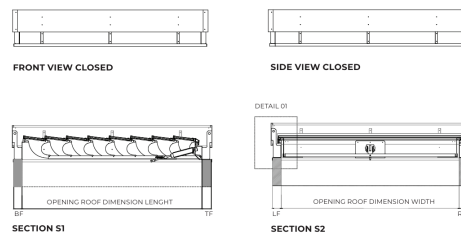
- S1 Flange for single glass.
- S2 Flange for double glass.
- S3 Flange for roofs, 45 degree bended.
- S4 Flange for roofs and facades
- S5 Flange for upstand, 90 degree bended downwards
- S6 Flange for 90 degree bended upwards
- SLS Flange for skylight connection, for different polycarbonate thickness.
- SC Flange for connection with other flange (vents connection).
- Male or female connection.
- SCM Flange for male connection.
- SCF Flange for female connection.

* Custom flange design and insulated flanges upon request

Uninsulated Multi-Louved Vent | Louvre Ventra



VENTRA INSULATED PERSPECTIVE



Dimensions/ Louvres Table, SW/PC25mm:

| Number Of Louvres | Length (mm) | | | | | | | | | | | | | | | | |
|-------------------|-------------|-----|------|------|------|------|------|------|------|------|------|------|------|------|------|--|--|
| | 3 | 4 | 5 | 6 | 7 | 8 | 9 | 10 | 11 | 12 | 13 | 14 | 15 | 16 | 17 | | |
| Width (mm) | | | | | | | | | | | | | | | | | |
| 300 | | | | | | | | | | | | | | | | | |
| 600 | | | | | | | | | | | | | | | | | |
| 1000 | 746 | 966 | 1186 | 1406 | 1626 | 1846 | 2066 | 2286 | 2506 | 2726 | 2946 | 3166 | 3386 | 3606 | 3826 | | |
| 1800 | | | | | | | | | | | | | | | | | |
| 2000 | | | | | | | | | | | | | | | | | |
| 2400 | | | | | | | | | | | | | | | | | |

Dimensions/ Louvres Table, Glass:

| Number Of Louvres | Length (mm) | | | | | | | | | | | | | | |
|-------------------|-------------|-----|------|------|------|------|------|------|------|------|------|------|------|--|--|
| | 3 | 4 | 5 | 6 | 7 | 8 | 9 | 10 | 11 | 12 | 13 | 14 | 15 | | |
| Width (mm) | | | | | | | | | | | | | | | |
| 500 - 1100 | | | | | | | | | | 2726 | 2946 | 3166 | 3386 | | |
| 1200 - 1700 | 746 | 966 | 1186 | 1406 | 1626 | 1846 | 2066 | 2286 | 2506 | | | | | | |

* Other dimensions upon request

Queensgate Works, Bilston Road, Wolverhampton, West Midlands, WV2 2NJ

01902 451 733 | sales@steelwayaccessandsafety.co.uk | www.steelwayaccessandsafety.co.uk

