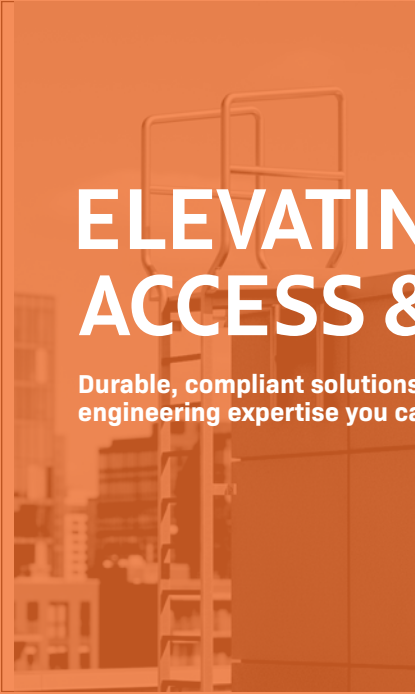


# ELEVATING ACCESS & SAFETY.

Durable, compliant solutions built on  
engineering expertise you can trust.







## Introduction: Where Access Meets Assurance

**We design and manufacture high-performance access systems engineered for safety, reliability and long term performance across demanding projects.**

Specialising in the engineering, design and manufacture of access and safety solutions for commercial, industrial and infrastructure environments. Our portfolio includes **roof hatches, access covers, fixed and retractable ladders, roof edge protection and integrated safety systems**: available as standard or fully bespoke to meet precise structural and compliance requirements.

Manufactured in a **controlled, high-precision environment**, our products are built for durability, corrosion resistance and consistent performance. With **co-ordinated solutions** that support safe installation, ease of use and ongoing compliance, we combine technical expertise with practical insight to help customers protect assets and maintain safe access for the long term.



### Technical Support

We provide dedicated technical support to ensure **smooth project execution** and quick issue resolution.



### Stock Availability

We ensure **reliable stock availability** through efficient inventory management and prompt restocking.



### Quality Assurance

We guarantee **top-quality steelwork** through strict inspections and precision craftsmanship.



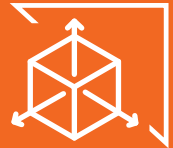
### Customer Care

We deliver responsive customer care focused on **clear communication** and lasting client satisfaction.



### UK Manufactured

We proudly manufacture all our products in the UK, ensuring superior **quality and local craftsmanship**.



### Made To Measure

We offer **made-to-measure solutions** tailored precisely to each clients specifications.



### Fast Delivery

We provide **fast, reliable delivery** to keep your projects on schedule.



### Group Solutions

We deliver group solutions through Northern Industries' combined **expertise and capabilities**.



### Maintenance Packages

Expert steel maintenance and services, for safe access and lasting performance.

## Our Guiding Principles

## Our Vision:

To be the trusted partner for safe, compliant and innovative access solutions: Protecting people, enhancing buildings and supporting the environments in which we live and work, for the long term.

## Our Values:

Our values are centred on delivering engineered solutions that prioritise safety, quality and long-term performance. Through technical expertise and a customer-first approach, we work collaboratively with our partners to provide reliable products that meet the highest industry standards.

Our support extends far beyond installation, with dedicated service and maintenance programmes designed to protect asset longevity, ensure continued compliance and keep every system operating at its through its lifecycle.

About:



**Delivering engineered solutions that enable safe, efficient access, combining intelligent design with dependable performance.**

As a specialist division of Steelway, we deliver high-quality access and safety products, from ladders and handrails to smoke ventilation and hatches, backed by manufacturing expertise and ongoing service to ensure reliable, compliant performance.



### Free Site Survey

We offer a free site survey to ensure that every project is tailored specifically to your needs.



### Assistance

We offer assistance with design and planning to streamline your project from start to finish.



### Project Management

We provide dedicated project management to ensure every stage runs smoothly and efficiently.



### Installation

We offer expert installation services to ensure every project is completed safely, efficiently and to the highest standard.



### Maintenance

We provide maintenance services to keep your installations performing safely and effectively long term.

## Service Contracts

It is recommended that all access hatches and modular systems are regularly serviced and maintained by a specialist personnel. **We can provide tailored maintenance schedules** to give peace of mind to the building's owners and occupiers.

## Contents: At A Glance

01 | Introduction

02 | Who Are We?

05 | Accreditations

06 | Galvanising Process

07 | Service Overview

09 | Ladders

10 | Modular Access

11 | Handrails

12 | Access Hatches

13 | Smoke Vents

14 | Vents

15 | Uninsulated Access

16 | Northern Industries

17 | Sustainability

# Our Credentials: Built On Integrity

Steelway Access & Safety is proud to have a range of recognised industry accreditations that **demonstrate our commitment to quality, safety and excellence** across all areas of our work.



## UL Listed (EU)

**Recognised assurance of quality, safety and performance.**

Product is independently tested and certified to meet European Safety Standards.

## CE Marking

**Compliant with recognised health and safety standards.**

Construction Product Regulations - EN1090 for CE Marking, Structural Components: EXC3.

## GHQ Approval

**Meeting high standards in health & safety management.**

Officially authorised and meets the required standards set by the General Health Headquarters.

## ISO 9001: 2015 Certified

Meeting internationally recognised standards for consistent quality management.

## ISO 9001 - Quality Management System

Certification Body: BSI. Approval No: FM10004.

## ISO 14001 - Environmental Management System

Certification Body: BSI. Approval No: EMS67731.

## OHSAS 18001 - Health & Safety Management

Certification Body: BSI. Approval No: OHS89170 (Bilston Road).

## CHAS Accredited

**Recognised assurance in health and safety compliance standards.**

CHAS - Registration 00043658.

## SafeContractor

**Recognised assurance of safe and responsible business practices.**

Safe Contractor - Registration N00186281.

## Construction Skills Certification Scheme

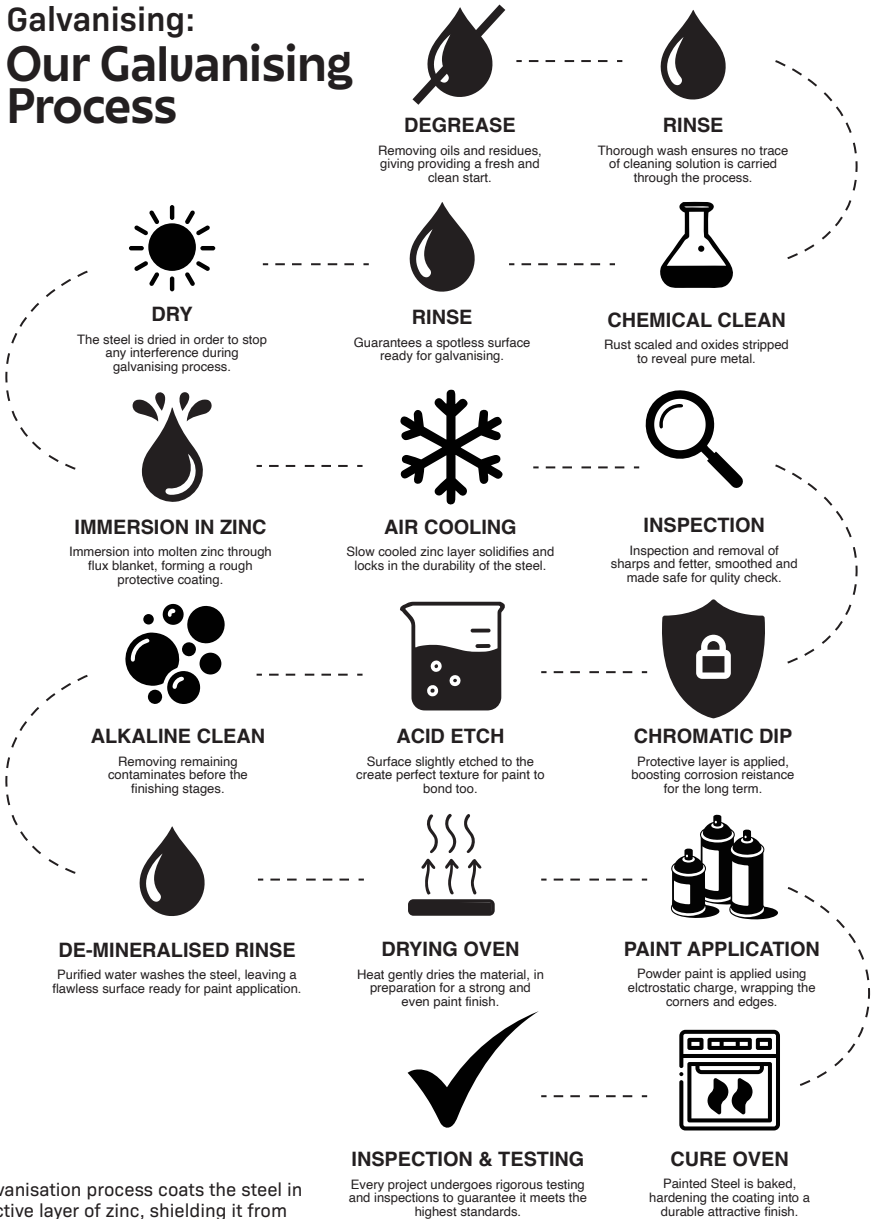
**Recognised verification of workforce competence and qualifications.**

## UKAS Management Systems

**Recognised certification of compliant and effective management systems.**

Management system is certified by the United Kingdom Accreditation Service to meet recognised quality standards.

# Galvanising: Our Galvanising Process



The galvanisation process coats the steel in a protective layer of zinc, shielding it from rust and environmental damage. This significantly extends the lifespan of our products, making them ideal for demanding outdoor and industrial environments.

At Steelway our core product range is manufactured using **galvanised steel to ensure long-term durability**, structural integrity and resistance to corrosion. By prioritising galvanised steel as our foundation material, we deliver solutions that are not only strong and reliable but built to perform for decades.

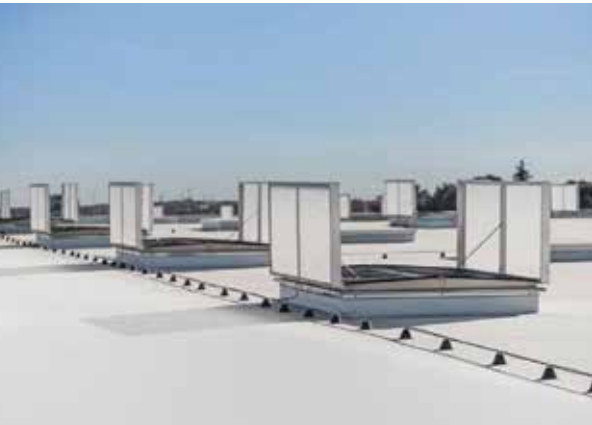
# Access & Safety: Service Overview

**We provide comprehensive turn-key solutions for safe and efficient building access. From ladders, handrails and step overs, our products are designed to deliver reliability, compliance and peace of mind. Alongside manufacture, design and installation we offer tailored service and maintenance packages, to keep your systems operating safely and efficiently throughout their lifecycle.**

Our access and safety solutions are built for durability and practicality. Whether it's secure ladders, robust handrails or convenient step-overs, every product supports safe movement around your building. Our AOV smoke ventilation hatches, both passable and non-passable, ensure effective airflow and fire safety compliance.

We don't just install systems, we support them over time. Our maintenance packages include routine inspections, preventative care and emergency response, keeping your access and ventilation systems in top condition while reducing downtime and extending lifespan.

With Steelway Access & Safety, you gain more than equipment, you gain a trusted partner dedicated to safety, quality and performance at every stage.

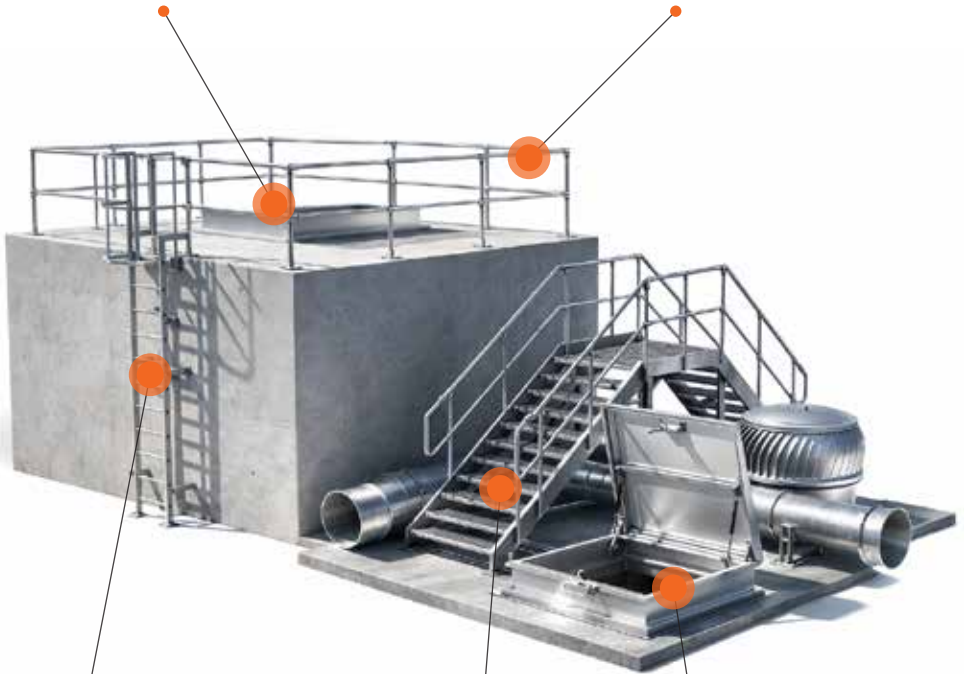


## Smoke Ventilation Systems

Our smoke ventilation solutions, **including AOV hatches and louvred systems** are designed for airflow, fire safety compliance and long-lasting performance. Tailored service and maintenance packages help keep buildings safe and operational.

## Hand Rails

Our steel handrails offer robust, reliable support, combining safety, durability and sleek design for **secure movement** throughout any building.



## Ladders

Our steel ladders provide strong, safe and durable access solutions, engineered for reliability, ease of use and **long-lasting performance in every environment**.

## Access Hatches

Our range of steel and aluminium access hatches provide durable, secure and easy-to-use solutions for safe building access, designed to meet both **functional and safety requirements**.

## Modular Access Systems

Our steel modular access systems offer safe, durable and easy to navigate solutions, designed to provide secure passage over obstacles while ensuring **long-lasting performance and compliance**.



Explore Our Full Product Range - [www.steelwayaccessandsafety.co.uk](http://www.steelwayaccessandsafety.co.uk)

Discover our full range of access, ventilation and safety solutions online, with detailed product information and downloadable technical data sheets to support your project.

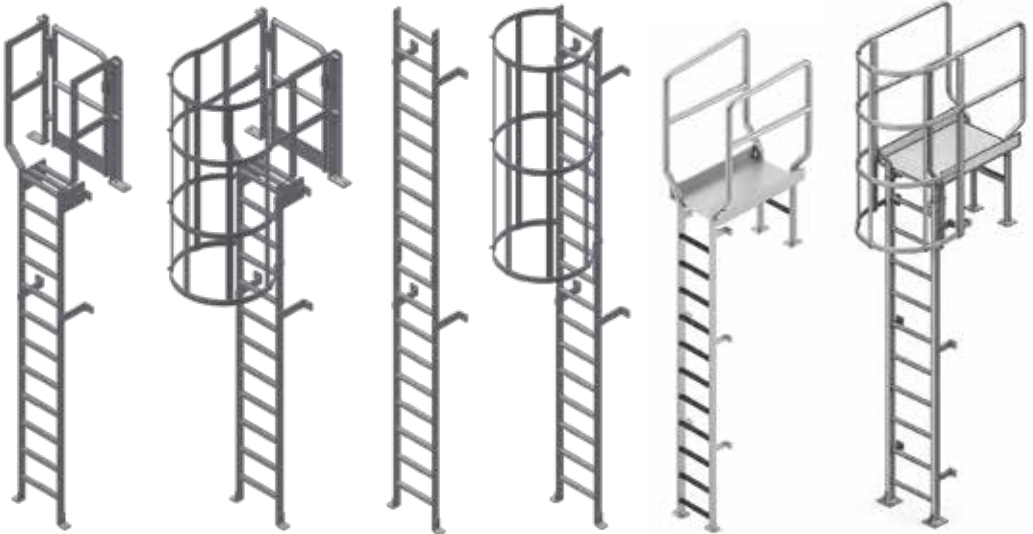


# Our Products: Fixed Access Ladders

## Performance You Can Rely On

Our fixed access ladders are designed to provide safe, reliable and long-term performance in demanding industrial environments, offering a secure and compliant access solution where durability and user safety are essential.

Manufactured from **high-grade mild steel, structural aluminium or stainless steel**, galvanised for durability (with optional powder coating) our modular design is lightweight yet strong and durable. With a standard **ladder width of 605mm**, minimum **200mm rear clearance**, up to a height of 300mm, the system is rated to **150kg for single-person use** and built for high-frequency industrial environments. Designed to comply with **BS4211:2005, BS EN ISO 14122-4:2016** and **relevant HSE guidelines**, each ladder system is **backed by a 25-year warranty**, subject to correct installation, use and maintenance in accordance with manufacturer recommendations.



### ASSLSG

Standard Ladder with Safety Gate

### ASSLCSG

Standard Ladder with Cage & Safety Gate

### ASSL

Standard Ladder

### ASSLC

Standard Ladder with Cage

### ASLPWT

Standard Ladder with Platform Walkthrough

### ASLCPWT

Standard Ladder with Cage & Platform Walkthrough



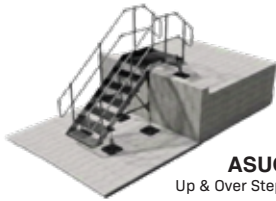
# Our Products: Modular Access Systems



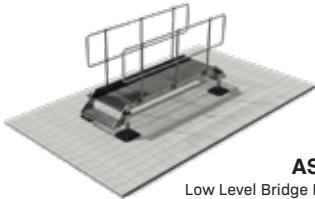
## Simple Solutions for Complex Access

Our step overs offer safe, durable, and versatile solutions for roof and industrial access. High-strength aluminium and corrosion-resistant fixings ensure long-lasting performance.

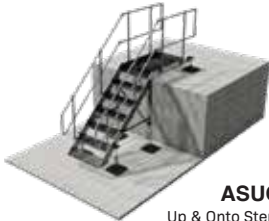
The range includes **extrusions, stair treads, handrail posts, and aluminium mesh decking**, secured with self-locking T-Bolts and stainless steel fixings. Lightweight and modular, the components can form step units, staircases, platforms, and industrial flooring for flexible, reliable access.



**ASUOSU**  
Up & Over Step Unit



**ASLLBP**  
Low Level Bridge Platform



**ASUOSU**  
Up & Onto Step Unit

## Materials

Manufactured from high-grade structural aluminium, the Modular Access system includes fixing brackets, joining plates, and support feet in powder-coated stainless steel, with stainless steel T-Bolts for secure, durable assembly.

## Dimensions

**Extrusions:** 80x38 (2.6kg/m), 180x32mm (4.9kg/m), platform support 58x38mm  
**Stair Tread:** 250x40,,  
**Handrail Post:** 58x38mm  
**Aluminium Mesh Deck:** 600x13mm (4.3kg for 600mm width)  
**Fixings:** M10x25 T-Bolt, 12g stainless steel Tek screws

## Characteristics

The system features a modular design with high-strength aluminium construction, a unique self-locking T-Bolt assembly, lightweight components, and overall strong, durable performance.



## Explore Additional Modular Access Options

As well as our step units, we offer **staircases, platforms and industrial flooring** in open-type or diamond type pattern designs. For full specifications and configurations, please see QR code.



Access detailed datasheets, technical specifications and further product information

Scan the QR code...

10 | Access & Safety | Modular Access Systems



# Our Products: Handrails



## Edge Protection Systems Engineered For Safety

**Our steel handrail systems deliver robust, compliant edge protection for industrial and commercial environments, combining strength, durability and clean design for safe access at height.**

Suitable for walkways, platforms, stairs and mezzanines, each system is manufactured from **mild steel, stainless steel or aluminium**, with tubular or solid construction options and modular components for efficient installation. Finishes include **self colour, primed, hot-dip galvanised**, nylon or powder coated mild steel, anodised aluminium and mill or polished stainless steel, **ensuring long-term durability in a variety of environments.**

Designed in accordance with relevant British Standards (**BS EN 1991-1-1, BS 5395-3, BS 4592-0 and BS 6180**), systems incorporate a **minimum of top and intermediate rails** with compliant height requirements for platforms and stairs. Matching gates and mesh infill panels are also available to create a fully integrated, code-compliant edge protection solution.



## Free Standing Handrails

Our freestanding counterbalanced steel handrails provide safe edge protection without roof penetration. Durable, modular, and easy to install, they offer a compliant fall protection solution for commercial and industrial roofs.



## Fixed Handrails

Our fixed steel handrails provide permanent, secure edge protection through direct structural fixing. Strong, durable, and compliant, they offer long-term fall protection for roofs, walkways, and industrial access areas.

Access detailed datasheets, technical specifications and further product information

Scan the QR code...



# Our Products: Roof Access & Ventilation

## Safe, Durable And Versatile Roof Solutions

Our aluminium roof hatches and smoke vents provide safe, durable, and low-maintenance roof access and ventilation, fully compliant with modern safety standards.

Made from **corrosion-resistant aluminium**, our roof hatches provide **secure access for maintenance**, while double-flap smoke vents **enable rapid smoke removal**, ventilation and natural daylight. Available in various sizes with **manual, pneumatic, or electric operation**, both systems are **ISO, EN, and ATEX certified**. Weatherproof design and durable components ensure long-lasting, low-maintenance performance for residential, commercial, and industrial roofs.



### Aluminium Roof Access Hatch

Our aluminium roof access hatch features **lids in various materials** and can be operated manually, with gas struts, or electrically. Designed for safe and convenient maintenance, it's **corrosion-resistant (EN AW 5754)** with **weatherproof bearings and hydrophobic tape**.

**Standard sizes:** 500–1500mm wide, 600–1200mm long, with custom dimensions and powder-coated finishes in any RAL colour available.



### Double Flap Smoke Vent

Our double-flap smoke vent removes smoke and warm air while providing ventilation and daylight. Made from **corrosion-resistant aluminium (EN AW 5754)** with **durable bearings and sealant**, it is watertight, low-maintenance, **ISO 9001 manufactured, EN 12101-2 certified, ATEX-compliant** and tested for 10,000 cycles.

**Standard sizes:** 1000 - 2500mm wide, 1000 - 2500mm long, with custom dimensions and powder-coated finishes in any RAL colour, bird or insect mesh and anti-fall grid available.



Access detailed datasheets, technical specifications and further product information

Scan the QR code...

# Our Products: Smoke Ventilation

## Smoke And All Weather Ventilation

Our single-flap smoke vents and all-weather ventilators provide safe smoke removal, warm-air ventilation and natural daylight in all roof conditions. Durable, corrosion-resistant aluminium ensures long-lasting, low-maintenance performance.

Both systems offer **pneumatic or electric operation** and meet **ISO 9001 and EN 12101-2 standards**. Single-flap vents suit stairwell fire protection or roof access, while all-weather ventilators use lateral flaps and top louvres for continuous ventilation, even in poor weather. **Corrosion-resistant bearings, weather sealing, and customisable sizes** ensure **reliable, watertight performance** for any roof type.



### Insulated Single Flap Opening Unit

Our single-flap smoke vent quickly removes smoke and warm air while providing ventilation and daylight. Made from **corrosion-resistant aluminium (EN AW 5754)** with durable bearings, it is **ISO 9001 and EN 12101-2 certified**, suitable for pneumatic or electric operation, and ideal for stairwell fire protection or roof access.

**Standard sizes:** 800–1300mm wide, 1000–1400mm long, with custom dimensions and powder-coated finishes in any RAL colour available.



### Hybrid Multi-Loured Smoke Vent

Our all-weather ventilator provides effective ventilation in any weather and rapid smoke or warm-air removal. Made from **corrosion-resistant aluminium (EN AW 5754)** with durable bearings and weather-sealing tape, it is **ISO 9001 manufactured and EN 12101-2 certified**, with pneumatic or electric operation for various roof types.

**Standard sizes:** 1000–2000mm wide, 1627–3166mm long, with powder-coated finishes in any RAL colour available.



# Our Products:

# Multi-Louvre Vents

## Multi-Louvre Ventilation & Smoke Removal

Our multi-louvered ventilators quickly remove smoke and warm air while providing daylight and fresh air. Made from corrosion-resistant aluminium with durable bearings and weather seals, they offer long-lasting, low-maintenance performance.

These ventilators operate **pneumatically, electrically, or via a combined system** and are **ISO 9001 manufactured** and **EN 12101-2 certified**. Suitable for facade or roof installation, they efficiently handle large volumes of air and smoke. Weatherproof design, corrosion-resistant components and customizable sizes (**up to 2400 x 3826mm**) ensure reliable, watertight performance.



Access detailed datasheets, technical specifications and further product information

Scan the QR code...

## Uninsulated Multi-Louvered Vent

Our multi-louvered ventilator provides natural ventilation, rapid smoke removal and daylight. Made from **corrosion-resistant aluminium (EN AW 5754)** with durable bearings and weatherproof sealing, it is **ISO 9001 and EN 12101-2 certified, ATEX compliant** and meets **NF S 61 937 standards**. Pneumatic, electric, or combined operation is available.

**Standard sizes:** 300–2400mm wide, 746–3826mm long, with custom dimensions and powder-coated finishes in any RAL colour available.

---

## Multi-Louvered Vent

This multi-louvered ventilator enables rapid smoke and warm-air removal with natural daylight and fresh air supply. Made from **corrosion-resistant aluminium (EN AW 5754)** with durable bearings and weather seals, it offers **low-maintenance, long-lasting performance**. Pneumatic, electric, or combined operation is available. **ISO 9001 manufactured and EN 12101-2 certified.**

**Standard sizes:** 300–2400mm wide, 746–3826mm long, with custom dimensions and powder-coated finishes in any RAL colour available.

# Our Products:

# Uninsulated Access Vent

## Dual-Purpose Roof Vent & Access

**This versatile unit combines EN 12101-2 certified smoke and heat exhaust ventilation with practical roof access, offering a durable, low-maintenance solution for safe and efficient roof operation.**

Designed with a corrosion-resistant **aluminium base and tempered aluminium lid (EN AW 5754)**, the unit provides long-lasting performance. Side openings can be manual with **gas springs or electrically operated**, and the ventilator **lid includes a 24V motor** for daily ventilation and smoke extraction. Corrosion-resistant bearings and integrated hydrophobic weather-sealing tape ensure watertight reliability, making it suitable for a wide range of roof types while delivering both safe smoke exhaust and convenient roof access.

**Standard sizes:** Roof opening width: 900-1800mm. Roof opening length: 966-2506mm (11 louvres, max).



## Application & Installation

Designed for straightforward roof installation, the unit is **supplied as standard with an S5 flange** for secure fixing to an upstand. Alternative flange options are available on request, allowing flexibility for different roof types and configurations.

The design ensures a **stable, watertight connection**, supporting both safe smoke extraction and convenient roof access while simplifying installation and maintenance.

15  
15 II Access & Safety II Uninsulated Access Vent

Access detailed datasheets,  
technical specifications and further  
product information

Scan the QR code...



# The Essentials: Northern Industries Group

**Established in 2019, with almost a century of combined design and manufacturing expertise, Northern Industries Group is a UK steel engineering group delivering high-quality, precision-fabricated solutions for demanding industries nationwide.**

We have built a strong national presence with multiple locations, across the Midlands, North East and South of the UK. Our capabilities include bespoke steel fabrication, structural solutions and engineered products, allowing us to support complex projects with reliability, expertise and consistent quality,

## 18

### Installation Teams

Our experienced installation teams ensure safe, efficient project delivery.

## 6

### Factories

Our six factories provide the capacity and capability to deliver high-quality steel solutions at scale.

## 284, 800sq ft

### Total Factory Size

Our combined 284,800 sq ft of factory space enables high-capacity, efficient steel fabrication.

## 24

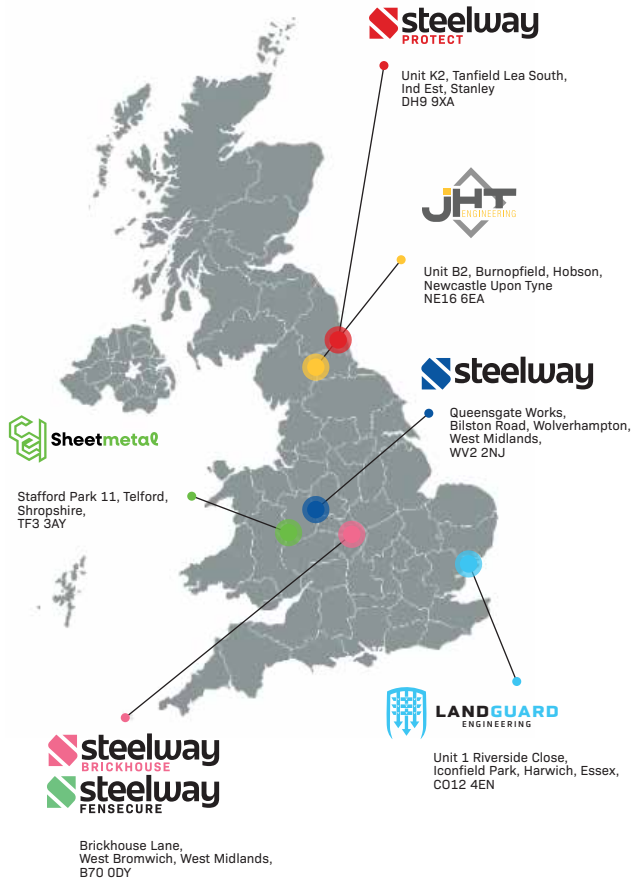
### Vehicles

Our vehicle fleet supports efficient nationwide delivery and installation.

## 20

### Design Engineers

Our team of 20 design engineers delivers innovative, precise steel solutions.



**Steelway**  
 Designs and manufactures custom steel structures and security solutions.

**Fensecure**  
 Manufactures durable steel fencing, gates, and MUGA systems.

**Brickhouse**  
 Builds high-quality steel access covers and frames for utilities, commercial and industrial sectors.

**Protect**  
 Provides high-security steel access covers, doors, and enclosures.

**JHT Engineering**  
 Fabricates and installs structural and bespoke steelwork.

**CEL Sheetmetal**  
 Specialises in precision sheet-metal fabrication and assembly.

**Landguard Engineering**  
 Specialises in steel fabrication and acoustic solutions.

**Northern Industries**  
 Unites precision steel-engineering and fabrication companies into one group.

**GROUP CAPABILITIES:**

Our group structure combines specialist expertise and resources to deliver efficient, consistent and high quality-solutions.

# Our Contributions: Sustainability & Compliance

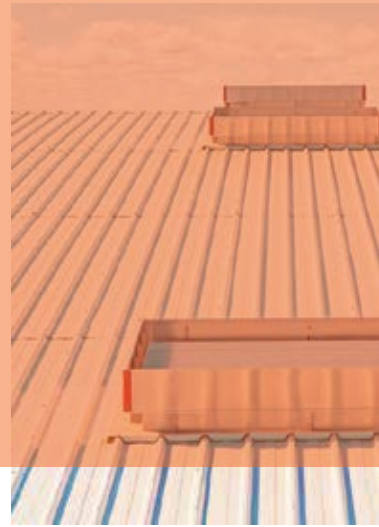
**Sustainability is central to our manufacturing approach, through responsible production practices, we reduce environmental impact while delivering high quality, compliant products built for longevity.**

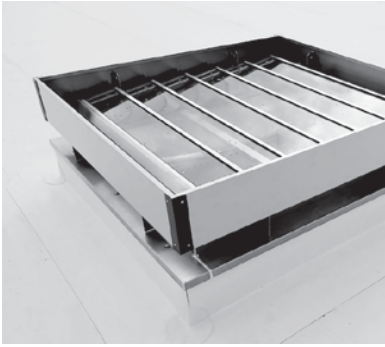
All products are designed with sustainability in mind, prioritising durability to extend lifecycles and minimise waste. By focusing on considered material selection, efficient processes and strict adherence to industry standards, we support a more environmentally responsible metal fabrication sector while helping customers achieve their own sustainability goals.

## **Green Steel Alternatives:**

**Green steel is a sustainable, low emission alternative that maintains strength and durability.**

Made from recycled, low-emission steel, it meets sustainability goals and is available in various grades and sizes for flexible construction solutions.





[www.steelwayaccessandsafety.co.uk](http://www.steelwayaccessandsafety.co.uk)  
[sales@steelwayaccessandsafety.co.uk](mailto:sales@steelwayaccessandsafety.co.uk)  
01902 451 733

**Find us here:**

Queensgate Works, Bilston Road,  
Wolverhampton, West Midlands, WV2 2NJ