

# FasTrax<sup>®</sup> XL High Speed Performance Doors

Rite-Hite's FasTrax XL is the most ideal high speed door for large door openings and harsh environments.

## Simple, reliable FasTrax design

Single operational platform, unique drive system, TRUE Auto Re-feed<sup>™</sup> and Soft Breakaway<sup>™</sup> Technology.

## TRUE Auto Re-feed<sup>™</sup>

After an accidental impact, the FasTrax XL re-feeds itself on the fly without human intervention, keeping your door closed and downtime to a minimum.

## Maximum uptime, minimum maintenance

Fewer moving parts mean fewer, less costly repairs and reliable, trouble-free performance.

## One of the industry's highest operating speeds

Depending on door size, operating speeds up to 52" (1.3 m) per second allows fast cycle times that maximize productivity and energy savings.

## Inherently safer by design

Thanks to Soft Breakaway technology, two thru-beam photo eyes, optional vision and available motion sensors.

## Communication

Rite-Hite Doors has a series of light communication products to help reduce common collision accidents between forklifts and pedestrians. SafeAlert<sup>™</sup> System, LED Pre-Announce and LED Virtual Vision available.

## Smart, Connected Capabilities

Rite-Hite provides smart, connected capabilities as part of the Rite-Hite Extended Warranty. Facilities gain visibility into their doors productivity and maintenance, helping to increase safety through the Rite-Hite Digital Platform.



True Auto Re-feed



Graphic User Interface



# Specifications

## Speed

Peak speed up to 52"/second (1.3 m/second) with standard variable frequency drive. Top speed is dependent on door size.

## Size

**Minimum** – 8'0" w x 8'0" h  
(2438 mm x 2438 mm)

**Maximum** – 24'0" w x 24'0" h  
(7316 mm x 7316 mm)

## Curtain material

PolyPro 100 mil (2.5 mm)

Standard colors: carbon, blue, orange, green, gray, red and white

## Side Frames

Black, powder coated aluminum

## Drive Systems

2 HP (1.5 kW) motor and remote mount control interface

## Electrical requirements

**Single-phase:** 220V - 240V

**Three-phase:** 208V, 230V, 400V, 460V, 575V

## Control box

- » i-COMM™ 3 Digital Controller, variable frequency drive.
- » Pre-wired and factory tested.
- » Standard fiberglass NEMA 4X.

## Graphic User Interface (GUI)

Industry's only 7" (178 mm) LCD touch screen interface that provides increased safety by allowing an individual to simply access the control box settings without wearing the necessary PPE often required for accessing a live electrical panel.

## Curtain retention

Wear-resistant Lexan wind guides keep tension on the curtain the entire length of the side frame. Standard pressure retention of 0.2 in. H<sub>2</sub>O (50 Pa) with capability up to 2.7 in. H<sub>2</sub>O (670 Pa). This is equivalent up to a 75 mph windload.

Includes TRUE Auto Re-feed system in case of accidental impacts to curtain.

## Safety Features

Soft Breakaway technology, two thru-beam photo eyes mounted at 18" (457mm) and 54" (1372 mm) from the floor.

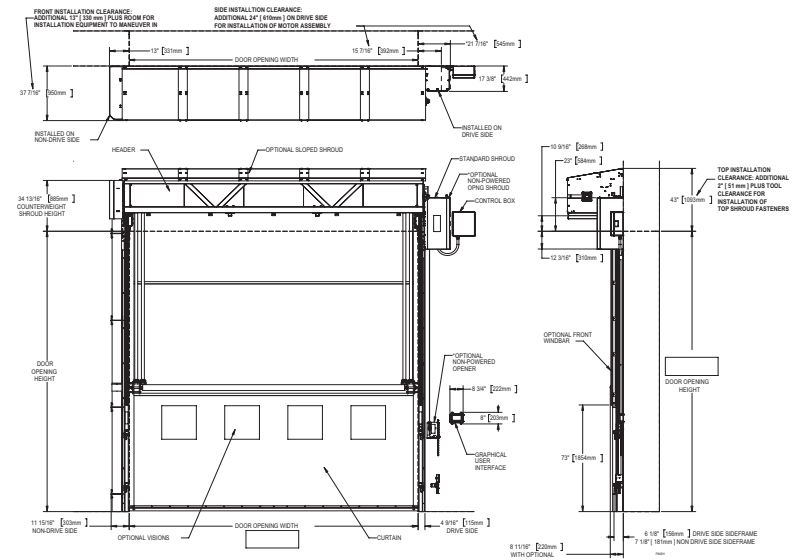
## Limited warranty

Five (5) Year for motor, brake and gearbox.  
Two (2) Year on all mechanical and electrical parts.  
One (1) Year labor.

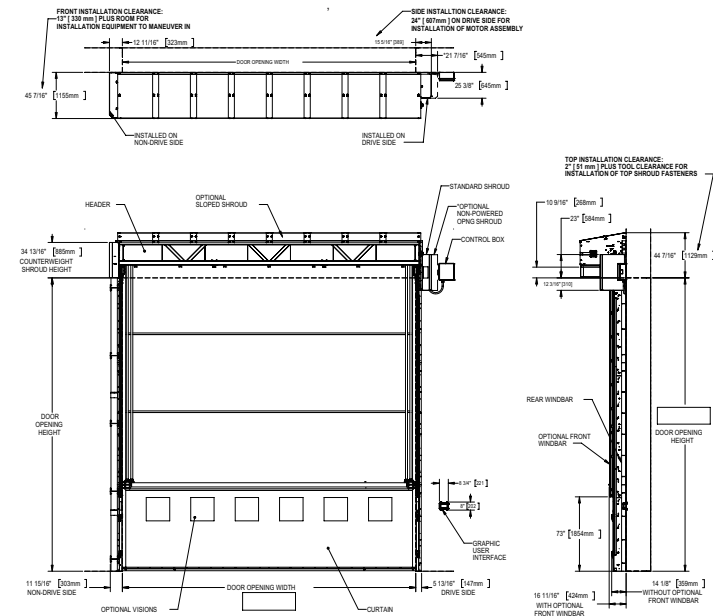
## Rite-Hite extended warranty

Seven (7) Year drive system.  
Three (3) Year fabric/panel, electrical & mechanical.  
Two (2) Year labor.

## FASTRAX® XL STANDARD PROJECTION (FRONT OR NO WINDBAR)



## FASTRAX® XL EXTENDED PROJECTION (REAR WINDBAR)



**RITEHITE**  
ALWAYS LOOKING AHEAD

D23FTXLSS1023G1

Milwaukee, Wisconsin, USA

[www.ritehite.com](http://www.ritehite.com)

P 414-355-2600 (800-456-0600)

F 414-355-9248

Rite-Hite®, FasTrax®, TRUE Auto Re-feed™, SafeAlert™ System, i-COMM™ are trademarks of the Rite-Hite Holding Corporation. Rite-Hite products may be covered by one or more U.S. Patents with other U.S. and foreign patents pending. Patent coverage: [www.ritehite.com/patents](http://www.ritehite.com/patents). The information herein is provided as a general reference only regarding the use of the applicable products. The specifications stated here are subject to change. Manufactured by Rite-Hite Doors, Inc.