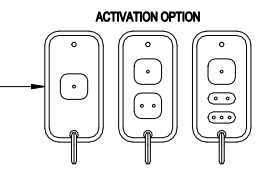
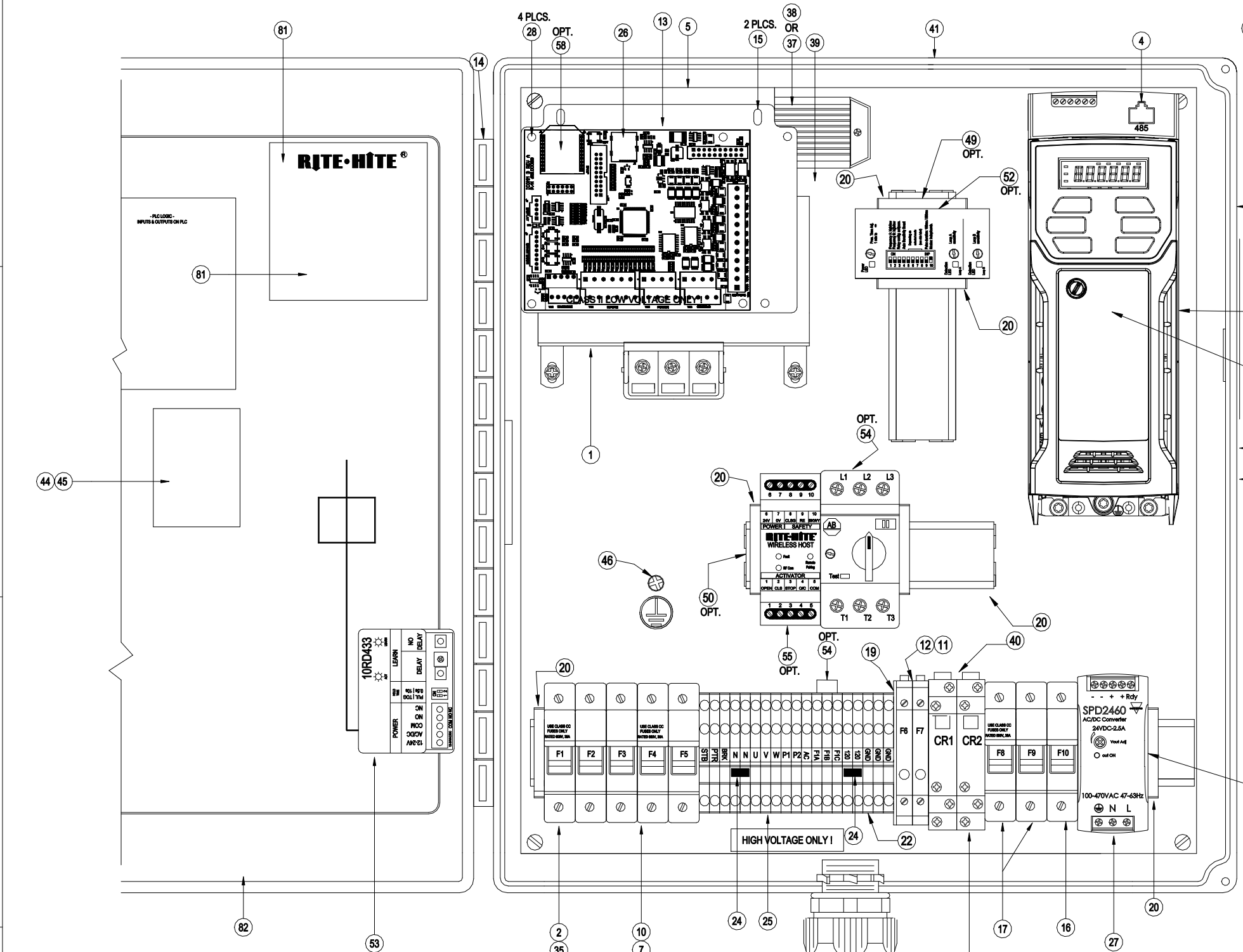


REV	DESCRIPTION	ECN	DATE	BY	APPROVED
A	Release to Production	7616	9/5/2018	MAS	



NOTE: FOR ALL CONTROL TECHNIQUES DRIVES, THE DRIVE SERIAL NUMBER MUST BE MARKED ON THE FRONT OF THE DRIVE, VISIBLE WHEN THE COVER IS REMOVED.

PLACE LABEL HERE FOR RH DRIVE & OPPOSITE SIDE FOR LH

NOTE: DISABLE FILTER BY REMOVING FILTER SCREW ON ALL CONTROL TECHNIQUES DRIVES, EXCEPT 400V. TAPE SCREW TO INSIDE WALL OF ENCLOSURE. FILTER TO BE ENABLED (SCREW IN) IF CBOX VOLTAGE IS 400V.

REV	DESCRIPTION	ECN	DATE	BY	APPROVED
A	Release to Production	7616	9/5/2018	MAS	

CE SPECS	REV	DESCRIPTION	ECN	DATE	BY	APPROVED
GERMAN	OR 1	53850741	78224563			
ITALIAN	OR 1	53850742	78224564			
FRENCH	OR 1	53850743	78224565			
PORTUGUESE	OR 1	53850744	78224566			
SPANISH	OR 1	53850745	78224567			
ENGLISH	OR 1	53850746	78224568			
INTERNATIONAL	AND 1	53850747	78224569			
	AND 1	53850748	78224570			
	AND 1	53850749	78224571			

↑ LANGUAGE DEPENDENT LABELS ↑

REV	DESCRIPTION	ECN	DATE	BY	APPROVED
OR 1	55150395	-			
AND 1	55150396	-			
AND 1	55150397	-			
AND 1	55150398	-			
AND 1	55150399	-			
AND 1	55150400	-			
AND 1	55150401	-			
AND 1	55150402	-			
AND 1	55150403	-			
AND 1	55150404	-			
AND 1	55150405	-			
AND 1	55150406	-			
AND 1	55150407	-			
AND 1	55150408	-			
AND 1	55150409	-			
AND 1	55150410	-			
AND 1	55150411	-			
AND 1	55150412	-			
AND 1	55150413	-			
AND 1	55150414	-			
AND 1	55150415	-			
AND 1	55150416	-			
AND 1	55150417	-			
AND 1	55150418	-			
AND 1	55150419	-			
AND 1	55150420	-			
AND 1	55150421	-			
AND 1	55150422	-			
AND 1	55150423	-			
AND 1	55150424	-			
AND 1	55150425	-			
AND 1	55150426	-			
AND 1	55150427	-			
AND 1	55150428	-			
AND 1	55150429	-			
AND 1	55150430	-			
AND 1	55150431	-			
AND 1	55150432	-			
AND 1	55150433	-			
AND 1	55150434	-			
AND 1	55150435	-			
AND 1	55150436	-			
AND 1	55150437	-			
AND 1	55150438	-			
AND 1	55150439	-			
AND 1	55150440	-			
AND 1	55150441	-			
AND 1	55150442	-			
AND 1	55150443	-			
AND 1	55150444	-			
AND 1	55150445	-			
AND 1	55150446	-			
AND 1	55150447	-			
AND 1	55150448	-			
AND 1	55150449	-			
AND 1	55150450	-			
AND 1	55150451	-			
AND 1	55150452	-			
AND 1	55150453	-			
AND 1	55150454	-			
AND 1	55150455	-			
AND 1	55150456	-			
AND 1	55150457	-			
AND 1	55150458	-			
AND 1	55150459	-			
AND 1	55150460	-			
AND 1	55150461	-			
AND 1	55150462	-			
AND 1	55150463	-			
AND 1	55150464	-			
AND 1	55150465	-			
AND 1	55150466	-			
AND 1	55150467	-			
AND 1	55150468	-			
AND 1	55150469	-			
AND 1	55150470	-			
AND 1	55150471	-			
AND 1	55150472	-			
AND 1	55150473	-			
AND 1	55150474	-			
AND 1	55150475	-			
AND 1	55150476	-			
AND 1	55150477	-			
AND 1	55150478	-			
AND 1	55150479	-			
AND 1	55150480	-			
AND 1	55150481	-			
AND 1	55150482	-			
AND 1	55150483	-			
AND 1	55150484	-			
AND 1	55150485	-			
AND 1	55150486	-			
AND 1	55150487	-			
AND 1	55150488	-			
AND 1	55150489	-			
AND 1	55150490	-			
AND 1	55150491	-			
AND 1	55150492	-			
AND 1	55150493	-			
AND 1	55150494	-			
AND 1	55150495	-			
AND 1	55150496	-			
AND 1	55150497	-			
AND 1	55150498	-			
AND 1	55150499	-			
AND 1	55150500	-			

↑ OPTIONAL COMPONENTS ↑

REV	DESCRIPTION	ECN	DATE	BY	APPROVED
AND 1	53850048	-			
AND 1	53850049	-			
AND 1	53850050	-			
AND 1	53850051	-			
AND 1	53850052	-			
AND 1	53850053	-			
AND 1	53850054	-			
AND 1	53850055	-			
AND 1	53850056	-			
AND 1	53850057	-			
AND 1	53850058	-			
AND 1	53850059	-			
AND 1	53850060	-			
AND 1	53850061	-			
AND 1	53850062	-			
AND 1	53850063	-			
AND 1	53850064	-			
AND 1	53850065	-			
AND 1	53850066	-			
AND 1	53850067	-			
AND 1	53850068	-			
AND 1	53850069	-			
AND 1	53850070	-			
AND 1	53850071	-			
AND 1	53850072	-			
AND 1	53850073	-			
AND 1	53850074	-			
AND 1	53850075	-			
AND 1	53850076	-			
AND 1	53850077	-			
AND 1	53850078	-			
AND 1	53850079	-			
AND 1	53850080	-			
AND 1	53850081	-			
AND 1	53850082	-			
AND 1	53850083	-			
AND 1	53850084	-			
AND 1	53850085	-			
AND 1	53850086	-			
AND 1	53850087	-			
AND 1	53850088	-			
AND 1	53850089	-			
AND 1	53850090	-			
AND 1	53850091	-			
AND 1	53850092	-			
AND 1	53850093	-			
AND 1	53850094	-			
AND 1	53850095	-			
AND 1	53850096	-			
AND 1	53850097	-			
AND 1	53850098	-			
AND 1	53850099	-			
AND 1	53850100	-			
AND 1	53850101	-			
AND 1	53850102	-			
AND 1	53850103	-			
AND 1	53850104	-			
AND 1	53850105	-			
AND 1	53850106	-			
AND 1	53850107	-			
AND 1	53850108	-			
AND 1	53850109	-			
AND 1	53850110	-			
AND 1	53850111	-			
AND 1	53850112	-			
AND 1	53850113	-			
AND 1	53850114	-			
AND 1	53850115	-			
AND 1	53850116	-			
AND 1	53850117	-			
AND 1	53850118	-			
AND 1	53850119	-			
AND 1	53850120	-			
AND 1	53850121	-			
AND 1	53850122	-			
AND 1	53850123	-			
AND 1	53850124	-			
AND 1	53850125	-			
AND 1	53850126	-			
AND 1	53850127	-			
AND 1	53850128	-			
AND 1	53850129	-			
AND 1	53850130	-			
AND 1	53850131	-			
AND 1	53850132	-			
AND 1	53850133	-			
AND 1	53850134	-			
AND 1	53850135	-			
AND 1	53850136	-			
AND 1	53850137	-			
AND 1	53850138	-			
AND 1	53850139	-			
AND 1	53850140	-			
AND 1	53850141	-			

REV	DESCRIPTION	ECN	DATE	BY	APPROVED
A	PRODUCTION RELEASE		8/07/2018	JAP	

CONNECTOR TABLE

THIS TABLE SHOWS THE FUNCTION OF EACH OF THE CONNECTORS ON THE UNIVERSAL CONTROLLER. THE VOLTAGES LISTED FOR EACH PIN ASSUME THAT EITHER THE INPUT OR OUTPUT IS ACTIVATED.

CONN.	PIN #	FUNCTION	VOLTAGE
J6	1	UNUSED	24 VDC
	2	RESET INPUT (X12)	24 VDC
	3	POWER SUPPLY INPUT	24 VDC
	4	LOOP INPUT (X13)	24 VDC
	5	NOT USED	24 VDC
	6	FAULT INPUT (X14)	24 VDC
	7	WARN. DEV. POWER OUTPUT	24 VDC
	8	YDC4	0 VDC
	9	IND. LOOP POWER OUTPUT	24 VDC
	10	YDC5	0 VDC
	11	INVERTER OUTPUT (OPT1)	24 VDC
	12	WARN. DEVICE OUTPUT (YDC6)	0 VDC
	13	INVRT COMMON (OPT_COM)	24 VDC
	14	YDC7	0 VDC
	15	POWER SUPPLY INPUT	0 VDC
	16	INVERTER OUTPUT (OPT2)	0 VDC
	17	IND. LOOP POWER OUTPUT	0 VDC
	18	RS485 + COMMUNICATIONS	5 VDC
	19	EARTH GROUND	0 VDC
	20	RS485 - COMMUNICATIONS	-5 VDC

CONTROL BOX FUSING

DEVICE	VOLTAGE	CURRENT RATING
F1/2/3	220, 1Ø	25 AMP
	208, 230 3Ø	20 AMP
	460 3Ø	10 AMP
	575 3Ø	10 AMP
F4/5	208, 220, 230	6 AMP
	400 - 575	6 AMP
F6	-	2 AMP
F7	-	2 AMP
F8/9	-	10 AMP
F10	-	4.5 AMP

RECOMMENDED FEEDER SERVICE AMPERAGES

DOOR STYLE	LINE VOLTAGES					
	208, 3Ø	220, 1Ø	230, 3Ø	400, 3Ø	460, 3Ø	575, 3Ø
BRGLD	30A	30A	30A	20A	10A	10A

CONTROL BOX FULL LOAD AMP REQUIREMENTS

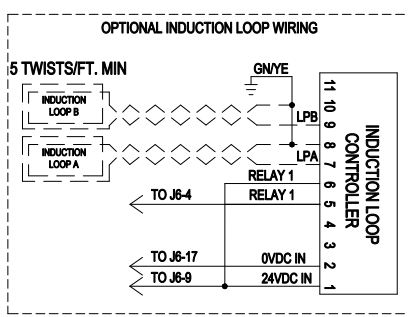
DOOR STYLE	LINE VOLTAGES					
	208, 3Ø	220, 1Ø	230, 3Ø	400, 3Ø	460, 3Ø	575, 1Ø
BRGLD	18.2A	24.3A	18.2A	9.2A	8.5A	9.3A

PRIMARY SIDE TRANSFORMER

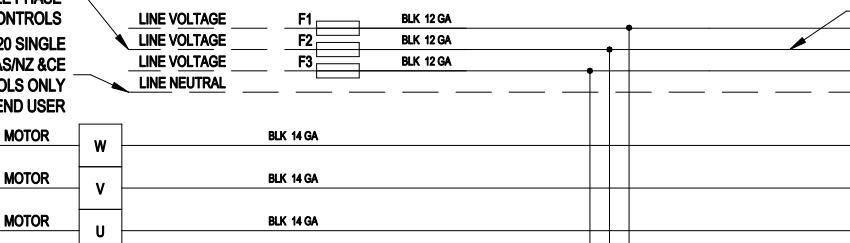
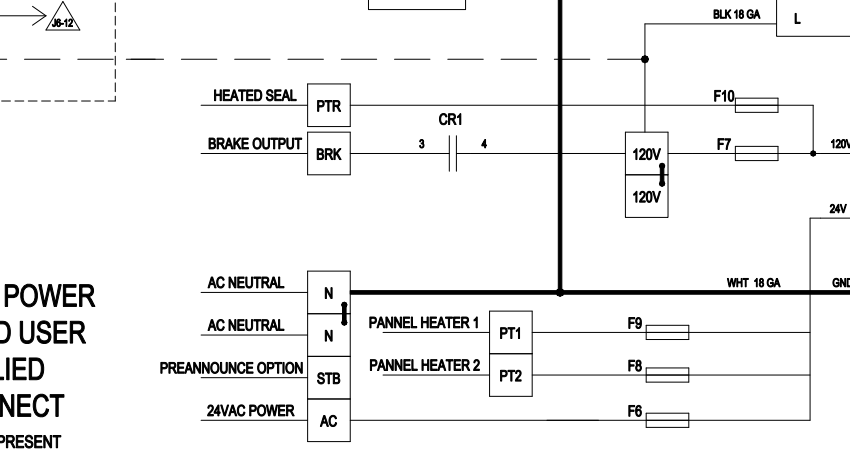
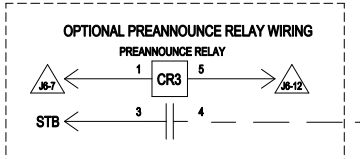
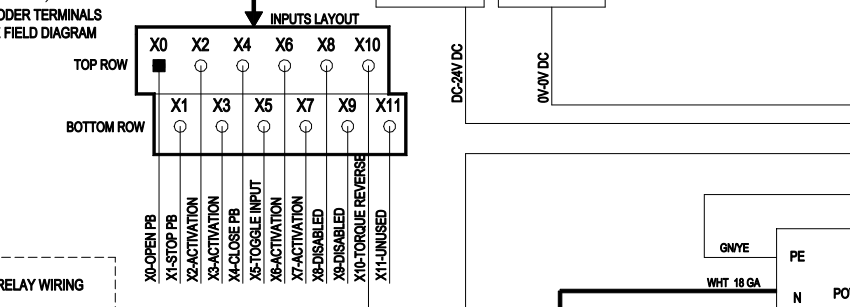
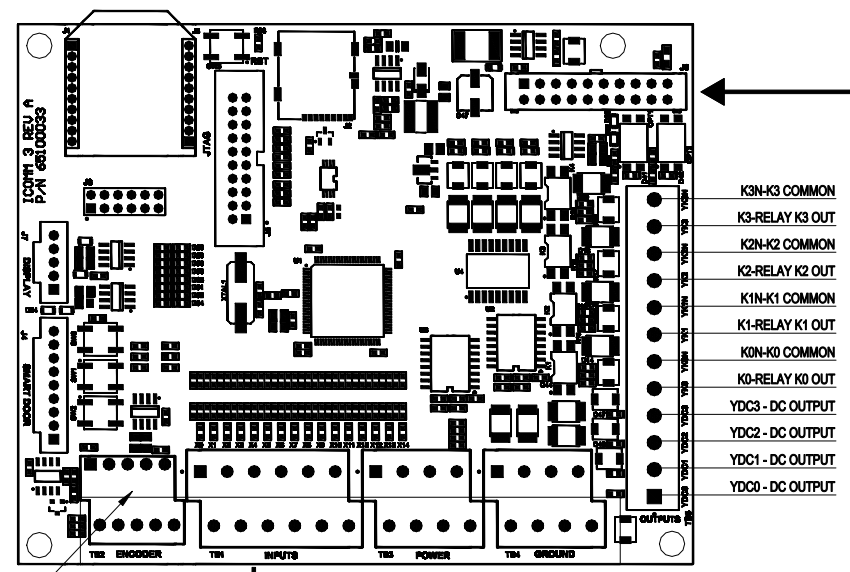
LINE VOLTAGE	TAPS
208V	H1-H2
230V	H1-H3
400V	H1-H4
460V	H1-H5
575V	H1-H6

SECONDARY SIDE TRANSFORMER

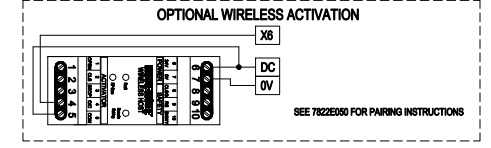
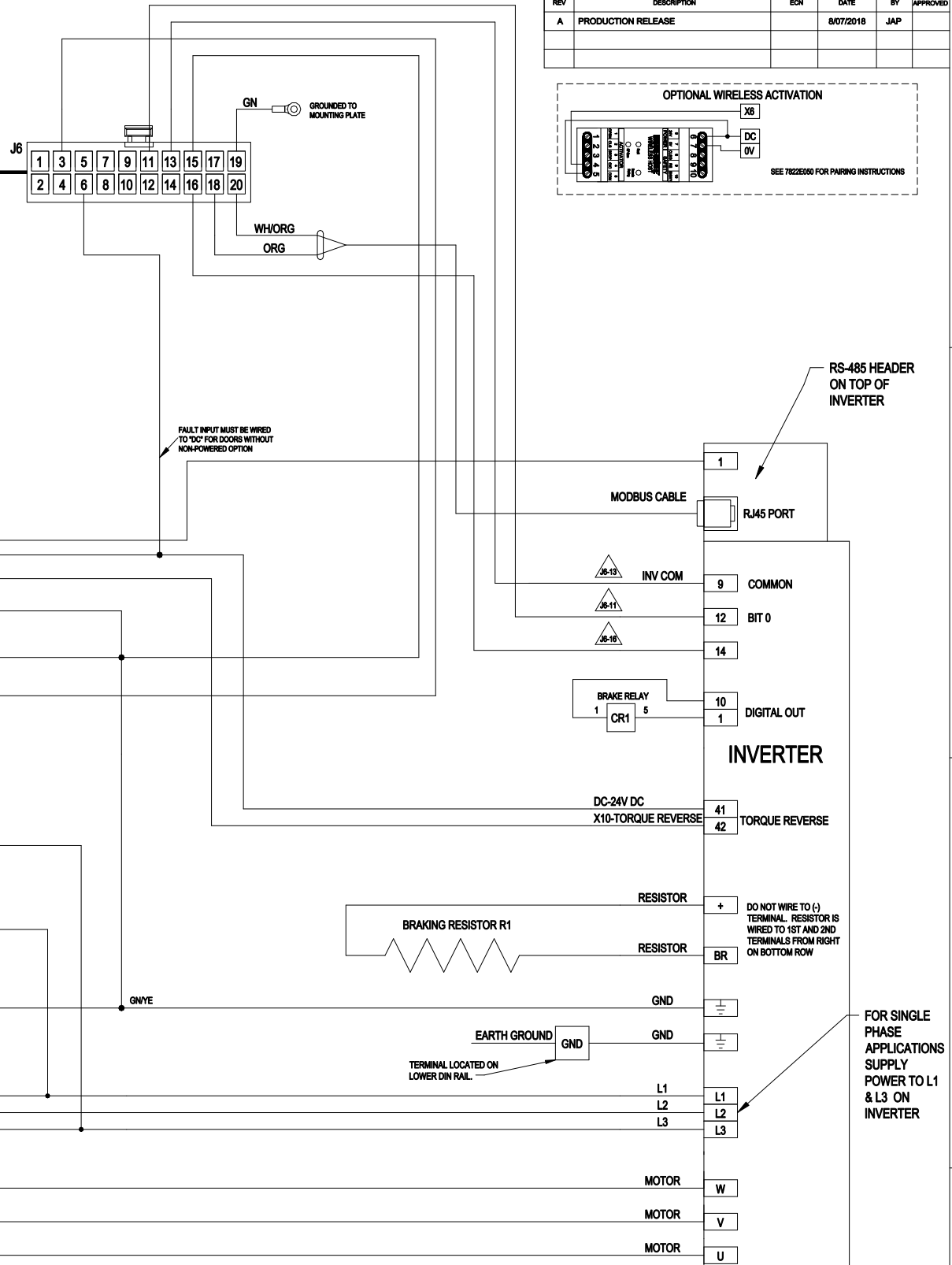
OUTPUT VOLTAGE	TAPS
GND	X1
24V	X2
120V	X3



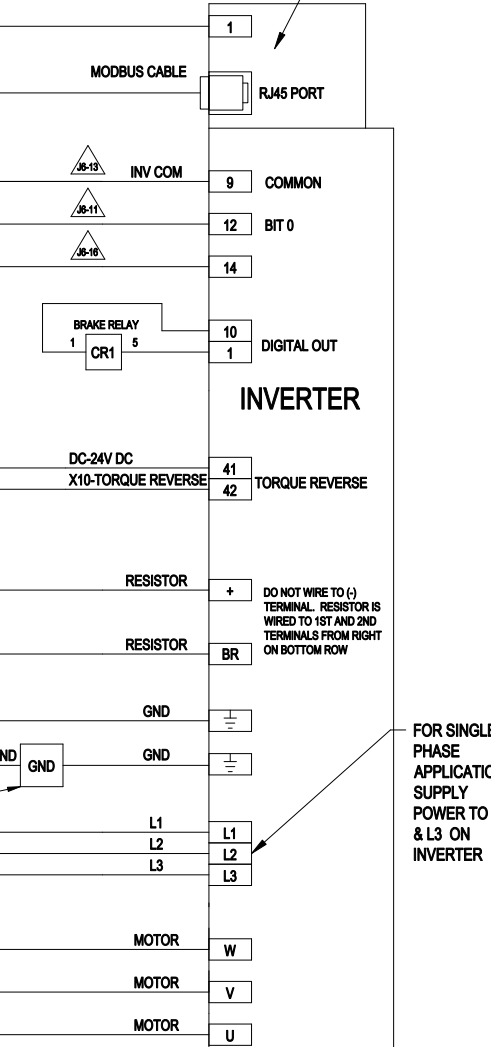
NOTES:
ALL WIRES ARE 18 AWG BLUE, UNLESS OTHERWISE MARKED.
ALL 24VDC CONTROL WIRES ARE BLUE.



WARNING:
ALL BLACK WIRES ARE AT POTENTIALLY LETHAL VOLTAGES.
⚡ - INDICATES OPPOSITE END OF WIRE



RS-485 HEADER ON TOP OF INVERTER



INCH TOLERANCES

OVER	UP TO	+/-
0	0.125	0.005
0.125	0.25	0.010
0.25	1.25	0.020
1.25	5	0.030
5	15	0.040
15	40	0.050
40	80	0.100
80	-	0.125

DO NOT SCALE DRAWING

DRAWN BY JAP DATE 8/7/2018
CHECKED BY DATE
APPROVED BY DATE

INITIAL ECN
DATE ISSUED
REF

ITEM QTY PART NO. DESCRIPTION

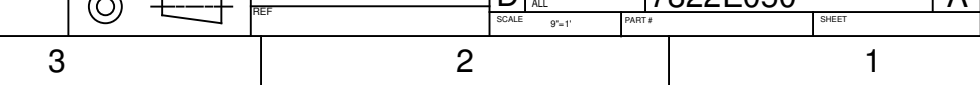
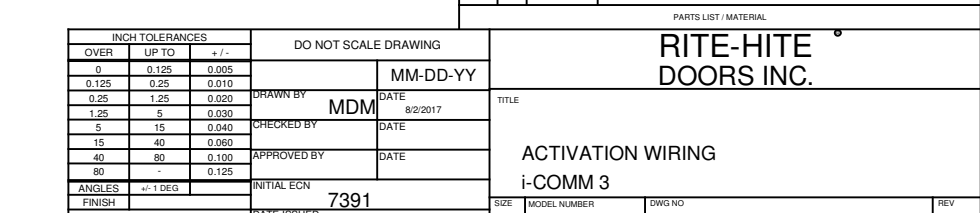
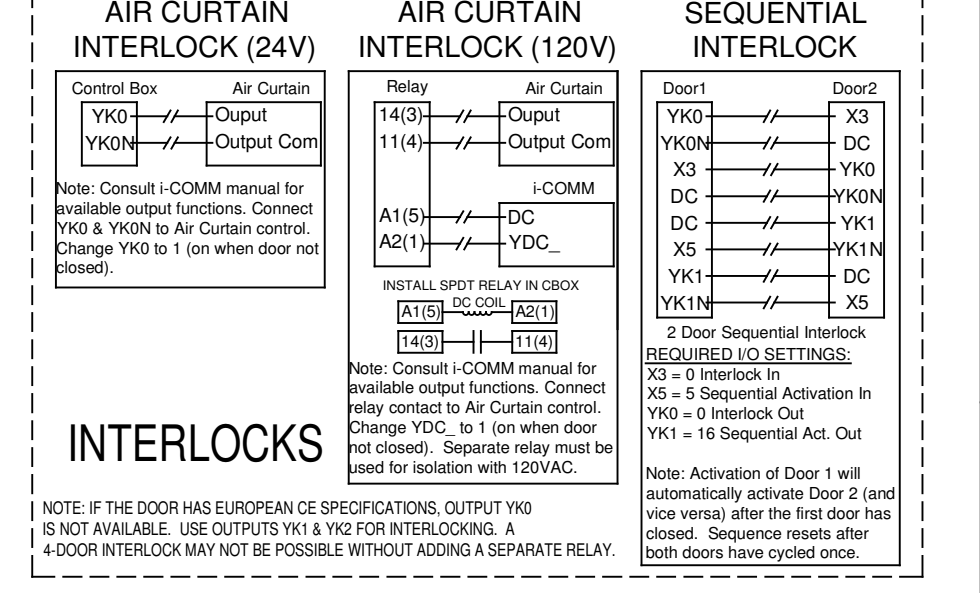
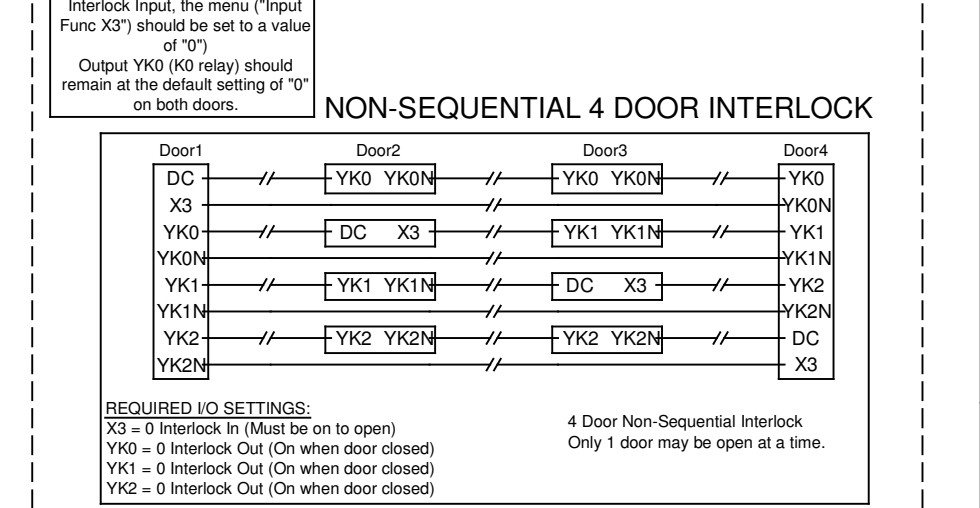
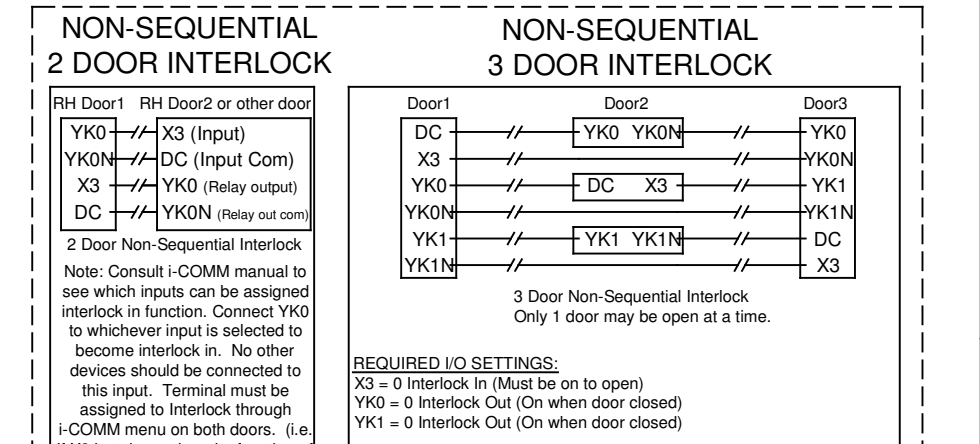
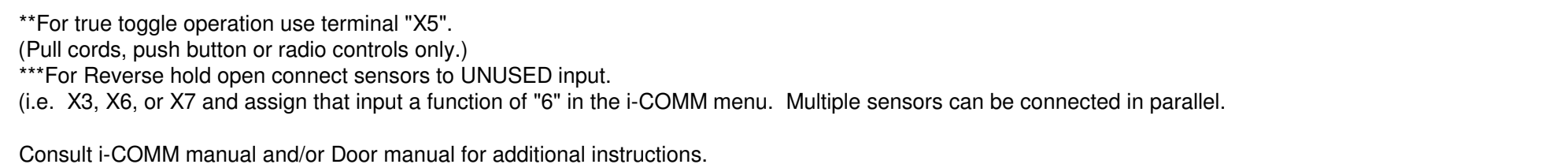
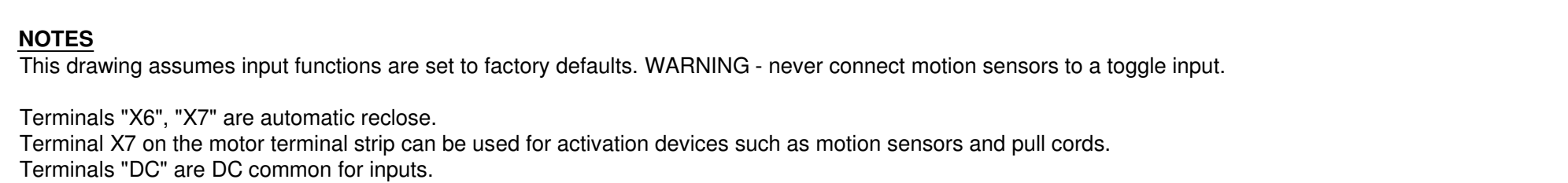
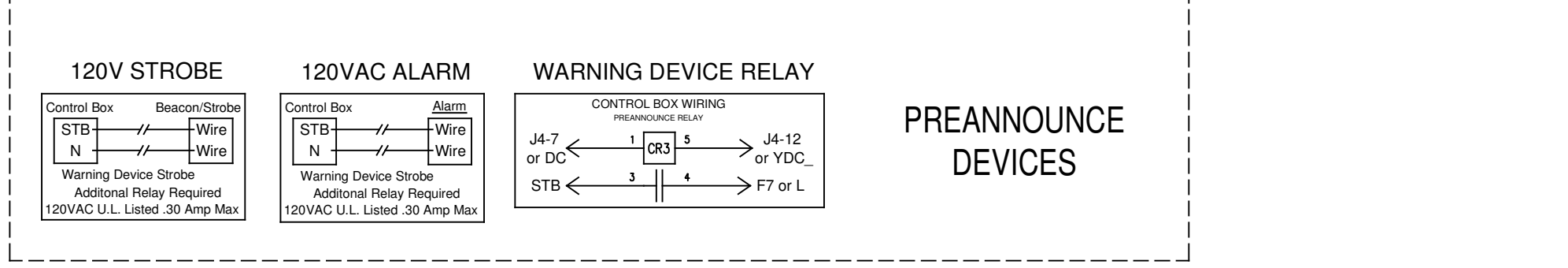
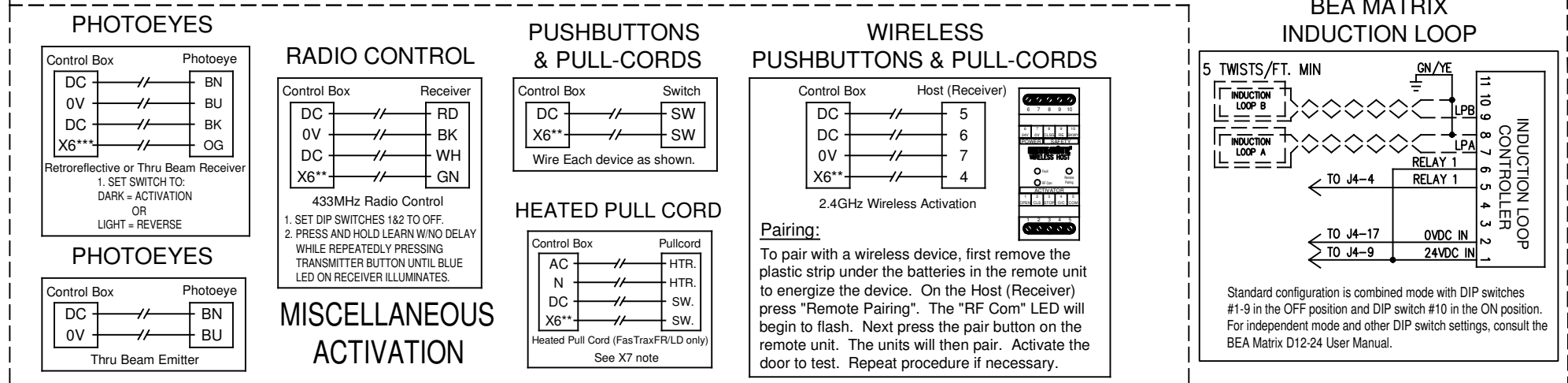
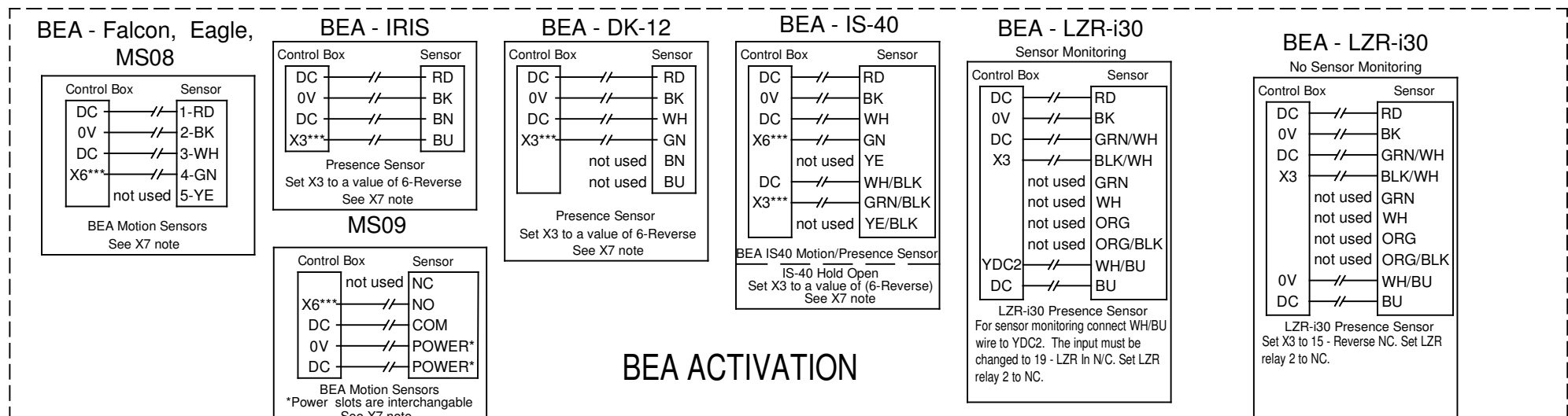
ITEM	QTY	PART NO.	DESCRIPTION
			PARTS LIST / MATERIAL

RITE-HITE DOORS INC.

TITLE: WIRING DIAGRAM
BARRIER GLIDER, i-COMM 3

SIZE: D BRGLD DWG NO: 8830E006 REV: A

REVISION HISTORY					
REV	DESCRIPTION	ECN	DATE	BY	APPROVED
A	PRODUCTION RELEASE	7391	8/16/2017	MDM	



NOTES
This drawing assumes input functions are set to factory defaults. WARNING - never connect motion sensors to a toggle input.

Terminals "X6", "X7" are automatic reclose.
Terminal X7 on the motor terminal strip can be used for activation devices such as motion sensors and pull cords.
Terminals "DC" are DC common for inputs.

**For true toggle operation use terminal "X5".
(Pull cords, push button or radio controls only.)
***For Reverse hold open connect sensors to UNUSED input.
(i.e. X3, X6, or X7 and assign that input a function of "6" in the i-COMM menu. Multiple sensors can be connected in parallel.

ITEM	QTY	PART NO.	DESCRIPTION
PARTS LIST / MATERIAL			

INCH TOLERANCES		DO NOT SCALE DRAWING		DATE	
OVER	UP TO	+	-	MM-DD-YY	
0	0.125	0.005		MDM	8/2/2017
0.125	0.25	0.010			
0.25	1.25	0.020			
1.25	5	0.030			
5	15	0.040			
15	40	0.060			
40	80	0.100			
80	-	0.125			
ANGLES		INITIAL ECN		DATE ISSUED	
FINISH	+/-1 DEG	7391		7391	
REF		DATE ISSUED		SCALE	
				9"-1"	

REVISION HISTORY					
REV	DESCRIPTION	ECN	DATE	BY	APPROVED

MOUNTED SIDE FALCON

- 1 POWER
- 2 POWER
- 3 RELAY COMMON
- 4 RELAY OUT

EU or US
 BN RD
 GN BK
 WH WH
 YE GN
 GY* YE*
 *WIRE NOT USED

WIRING FROM FALCON TO J-BOX:
 1 TO DC2, 2 TO 0V, 3 TO DC, 4 TO NMDC,
 5 NOT USED

NON-MOUNTED SIDE FALCON

- 1 POWER
- 2 POWER
- 3 RELAY COMMON
- 4 RELAY OUT

EU or US
 BN RD
 GN BK
 WH WH
 YE GN
 GY* YE*
 *WIRE NOT USED

WIRING FROM FALCON TO J-BOX:
 1 TO DC2, 2 TO 0V, 3 TO DC, 4 TO MSDC,
 5 NOT USED

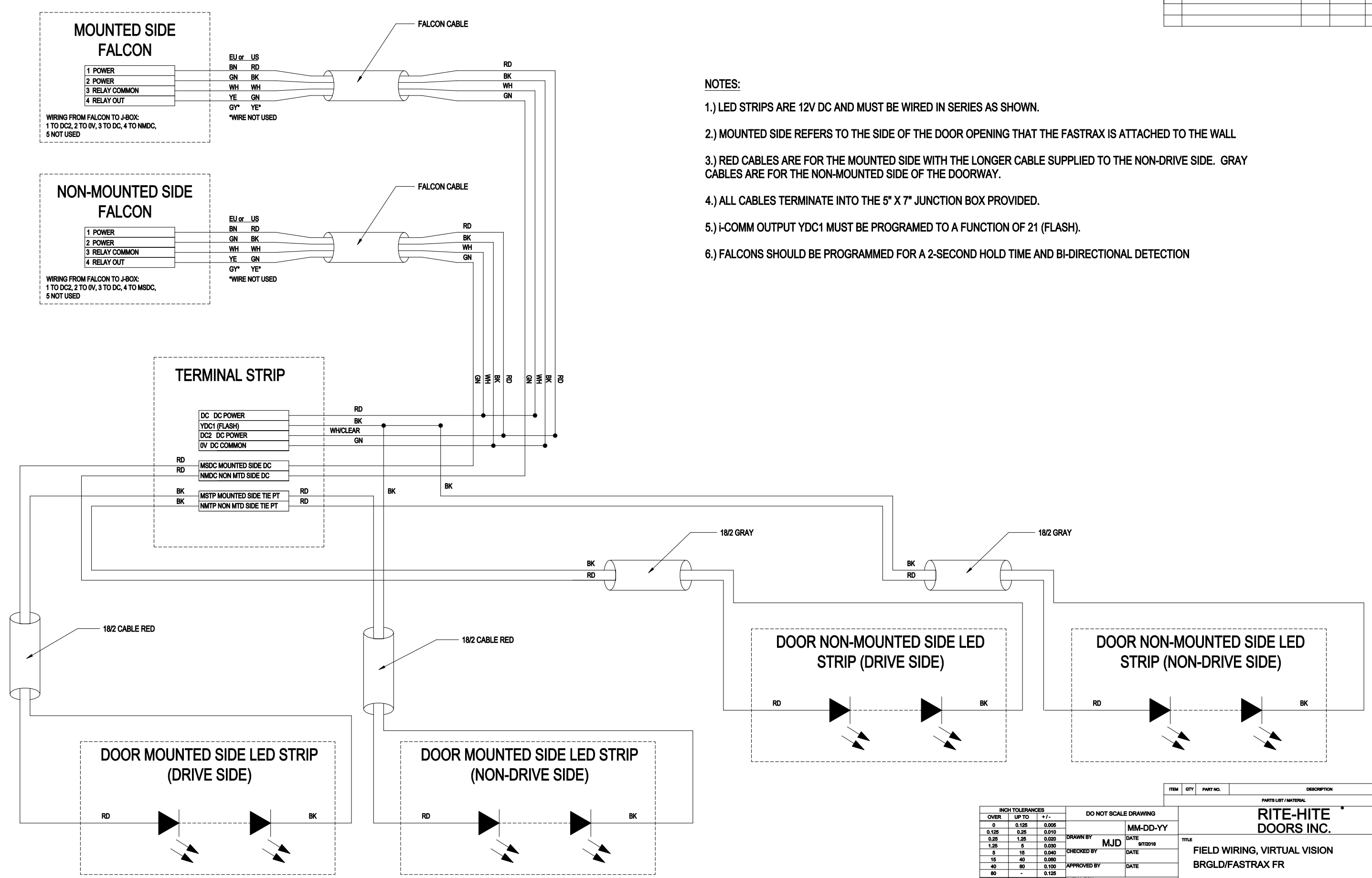
TERMINAL STRIP

- DC DC POWER
- YDC1 (FLASH)
- DC2 DC POWER
- 0V DC COMMON

- MSDC MOUNTED SIDE DC
- NMDC NON MTD SIDE DC
- MSTP MOUNTED SIDE TIE PT
- NMTP NON MTD SIDE TIE PT

NOTES:

- 1.) LED STRIPS ARE 12V DC AND MUST BE WIRED IN SERIES AS SHOWN.
- 2.) MOUNTED SIDE REFERS TO THE SIDE OF THE DOOR OPENING THAT THE FASTRAX IS ATTACHED TO THE WALL
- 3.) RED CABLES ARE FOR THE MOUNTED SIDE WITH THE LONGER CABLE SUPPLIED TO THE NON-DRIVE SIDE. GRAY CABLES ARE FOR THE NON-MOUNTED SIDE OF THE DOORWAY.
- 4.) ALL CABLES TERMINATE INTO THE 5" X 7" JUNCTION BOX PROVIDED.
- 5.) I-COMM OUTPUT YDC1 MUST BE PROGRAMED TO A FUNCTION OF 21 (FLASH).
- 6.) FALCONS SHOULD BE PROGRAMMED FOR A 2-SECOND HOLD TIME AND BI-DIRECTIONAL DETECTION



OVER	UP TO	+/-
0	0.125	0.005
0.125	0.25	0.010
0.25	1.25	0.020
1.25	5	0.050
5	15	0.040
15	40	0.080
40	80	0.100
80	-	0.125

DO NOT SCALE DRAWING	
DRAWN BY	MM-DD-YY
MJD	9/7/2018
CHECKED BY	DATE
APPROVED BY	DATE
DATE ISSUED	
REF	

ITEM	QTY	PART NO.	DESCRIPTION
PARTS LIST / MATERIAL			
RITE-HITE DOORS INC.			
FIELD WIRING, VIRTUAL VISION BRGLD/FASTRAX FR			
SIZE	MODEL NUMBER	DWG NO	REV
D	BRGLD	8830E009	A
SCALE	9"=1"	PART #	SHEET