

4

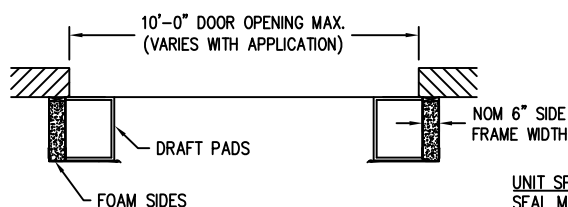
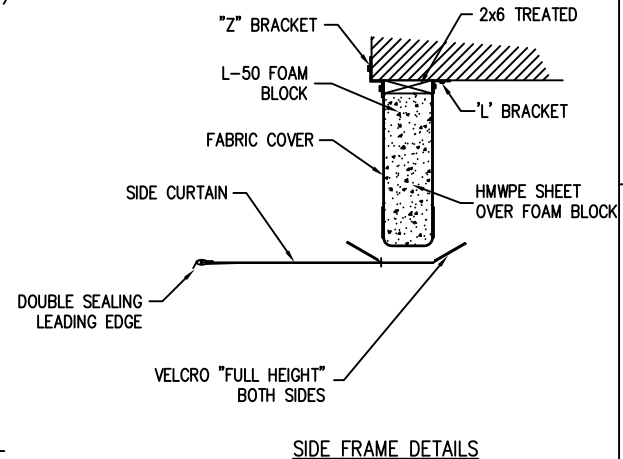
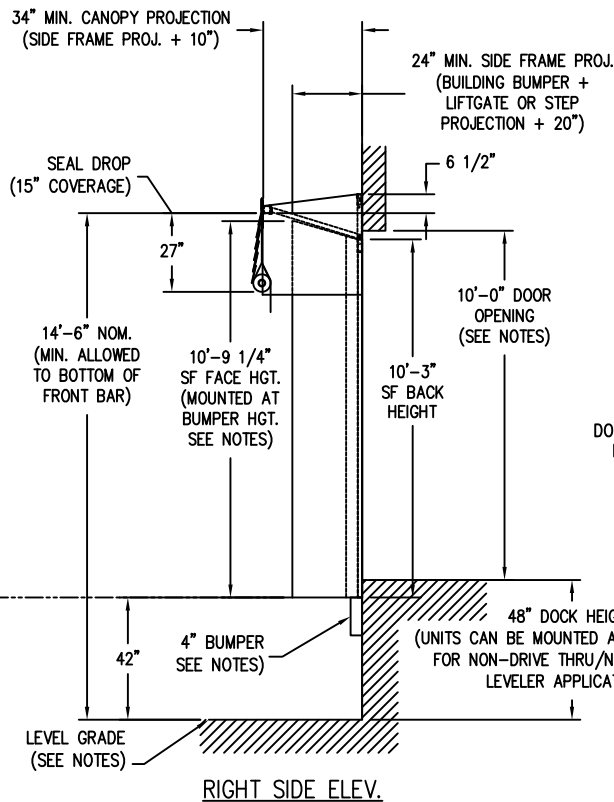
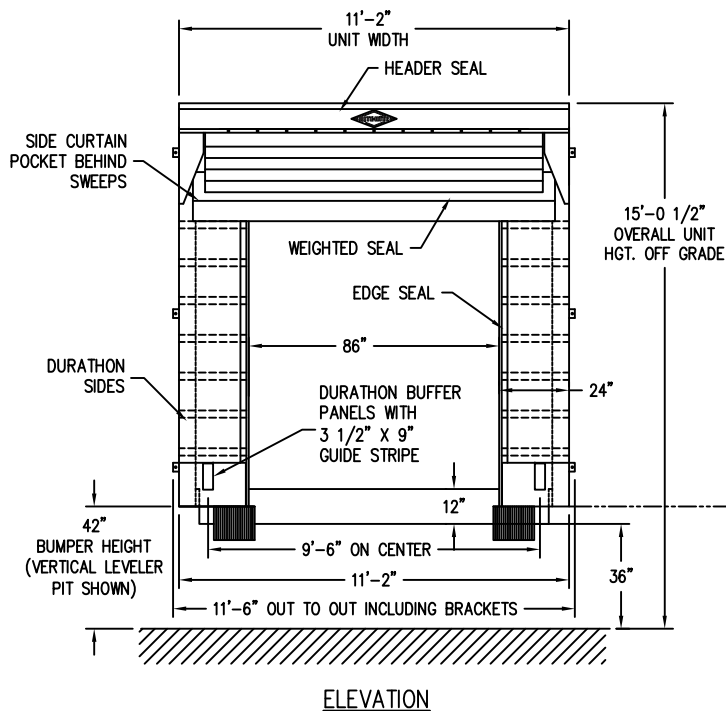
3

2

1

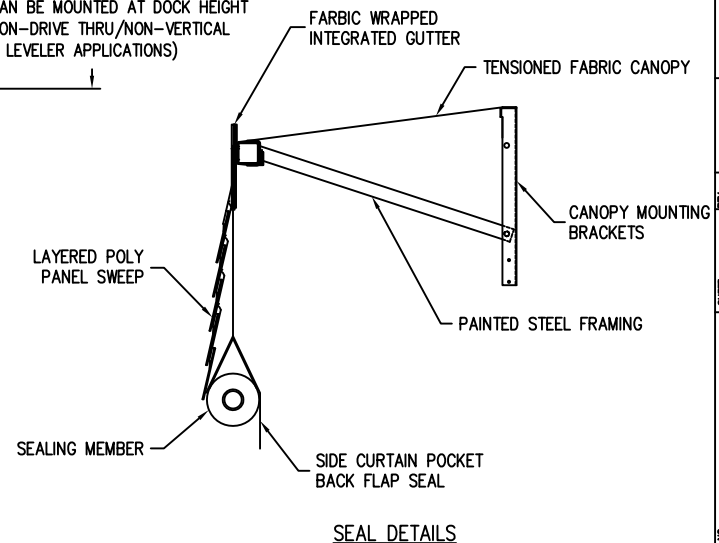
NEXT ASSEMBLY

REVISION HISTORY					
REV	DESCRIPTION	ECH	DATE	BY	APPROVED



UNIT SPECIFICATIONS:
 SEAL MEMBER: F114 22 PLUS, BLACK
 SIDE FRAME: F114 22 PLUS, BLACK
 SIDE CURTAIN: F510, BLACK DURATHON
 TRUCK COVERAGE SHOWN: 12' 3" - 13' 6"

- NOTES:**
- APPLICATIONS THAT HAVE BUMPERS MOUNTED ABOVE DOCK HEIGHT (OR ABOVE THE PIT FLOOR IN VERTICAL LEVELER APPLICATIONS) MAY REQUIRE THAT THE BOTTOM OF THE SIDE MEMBERS BE MOUNTED AT THE TOP OF THE BUMPERS INSTEAD OF AT DOCK HEIGHT.
 - VERTICAL LEVELER APPLICATION SHOWN ABOVE.
 - MAXIMUM DOOR OPENING BASED ON CANOPY TYPE. CONSULT APPLICATIONS.
 - THIS MODEL APPLICABLE FOR DRIVE THRU AND NON-DRIVE THRU APPLICATIONS. CONSULT APPLICATIONS.
 - LEVEL GRADE REQUIRED FOR DRIVE THRU APPLICATIONS.
 - 20" MIN. TRAILER PENETRATION



ITEM	QTY	PART NO.	DESCRIPTION
PARTS LIST / MATERIAL			
<p align="center">RITE-HITE ENVIRONMENTAL ENCLOSURES CO.</p> <p align="center">ARCHITECTURAL APPROVAL STD PITCH ECLIPSE NH DOCK SHELTER</p>			
SIZE	MODEL NUMBER	DWG NO	REV
C	620NH	A7120143	
SCALE 3/8" = 1'		PART #	SHEET 1 of 1

RICH TOLERANCES			DO NOT SCALE DRAWING	
OVER	UP TO	+ / -	MM-DD-YY	
0	0.125	0.005	MM-DD-YY	
0.125	0.25	0.010	DATE	12/15/2014
0.25	1.25	0.020	DRAWN BY	CJD
1.25	5	0.030	CHECKED BY	
5	15	0.040	APPROVED BY	
15	40	0.050	DATE ISSUED	3/10/2015
40	80	0.100	INITIAL ECH	14-013
80	-	0.125	DATE ISSUED	3/10/2015
ANGLES 1/2" - 1 DEG		INITIAL ECH		
FRESH	NONE	DATE ISSUED		

THIS DRAWING IS FOR REFERENCE ONLY. DO NOT USE FOR PRODUCTION PURPOSES.

4

3

2

1

SHEET 1 of 1
DWG NO A7120143