

4

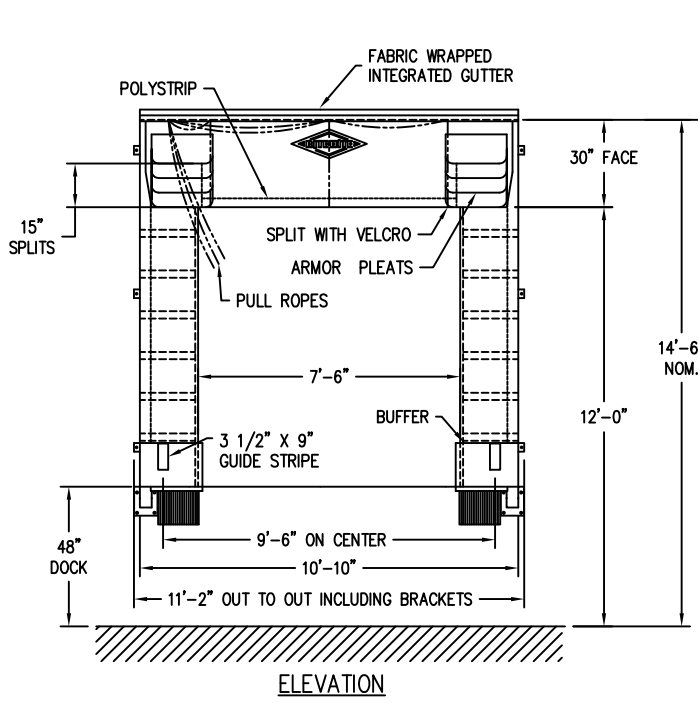
3

2

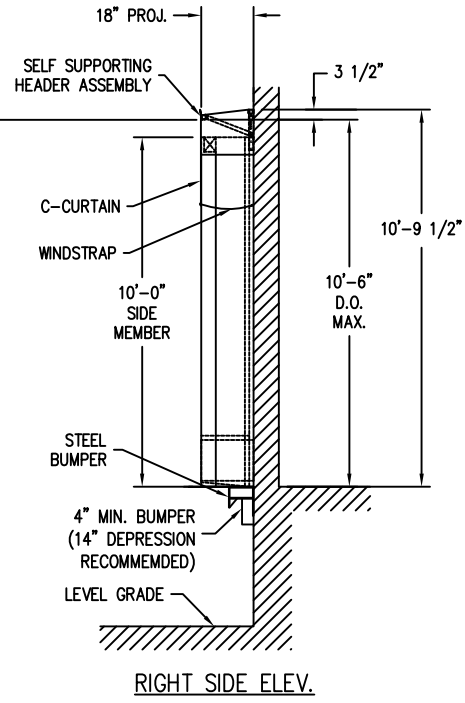
1

NEXT ASSEMBLY

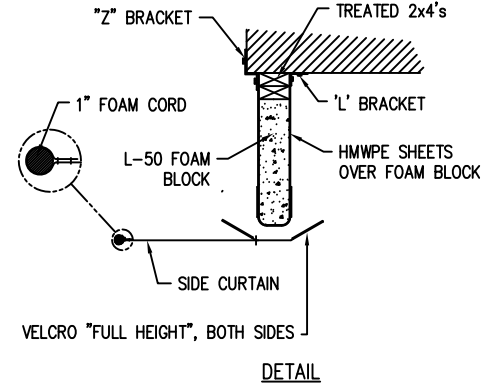
REVISION HISTORY					
REV	DESCRIPTION	ECH	DATE	BY	APPROVED
A	ADDED NOTE ABOUT RAISED BUMPERS	08-009	3/26/08	GDB	
B	ADDED "FOR REFERENCE ONLY" NOTE	11-010	3/29/2011	GDB	
C	UPDATED LOGO AND TITLE BLOCK	14-006	3/28/2014	GDB	



ELEVATION



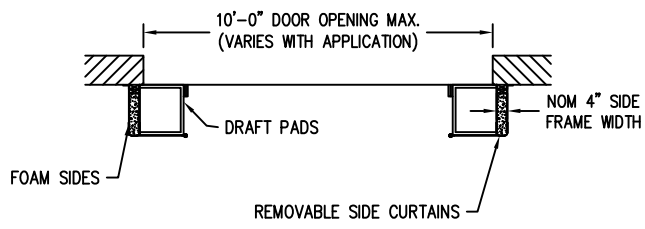
RIGHT SIDE ELEV.



DETAIL

C STYLE CURTAIN: F114 22 PLUS, BLACK
 SIDE FRAME: F114 22 PLUS, BLACK
 SIDE CURTAIN: F114 22 PLUS, BLACK
 RECOMMENDED TRUCK COVERAGE: 12'-6" - 13'-6" HIGH
 X 8'-0" - 8'-6" WIDE

NOTE:
 APPLICATIONS THAT HAVE BUMPERS MOUNTED ABOVE DOCK HEIGHT (OR ABOVE THE PIT FLOOR IN VERTICAL LEVELER APPLICATIONS) MAY REQUIRE THAT THE BOTTOM OF THE SIDE MEMBERS BE MOUNTED AT THE TOP OF THE BUMPERS INSTEAD OF AT DOCK HEIGHT.



SECTION THRU PLAN

THIS DRAWING IS FOR REFERENCE ONLY.
 DO NOT USE FOR PRODUCTION PURPOSES.

INCH TOLERANCES			DO NOT SCALE DRAWING	
OVER	UP TO	+ / -	MM-DD-YY	DATE
0	0.125	0.005	MM-DD-YY	1/28/05
0.125	0.25	0.010	DRAWN BY	CJD
0.25	1.25	0.020	CHECKED BY	DATE
1.25	5	0.030	APPROVED BY	DATE
5	15	0.040	INITIAL ECH	05-003
15	40	0.050	DATE ISSUED	1/31/05
40	80	0.100	REF	
80	-	0.125		

ITEM	QTY	PART NO.	DESCRIPTION
PARTS LIST / MATERIAL			
RITE-HITE ENVIRONMENTAL ENCLOSURES CORP.			
TITLE: ARCHITECTURAL APPROVAL 610E SERIES SHELTER ELIMINATOR II - 4" BACKERS			
SIZE	MODEL NUMBER	DWG NO	REV
C	610E	A7120062	C
SCALE 3/8"=1'			SHEET 1 of 1

DWG NO A7120062 SHEET 1 of 1

4

3

2

1