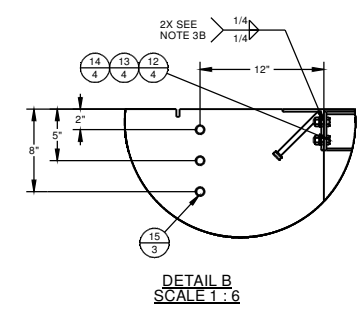
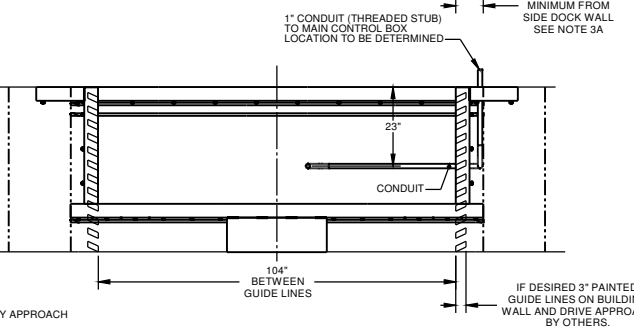
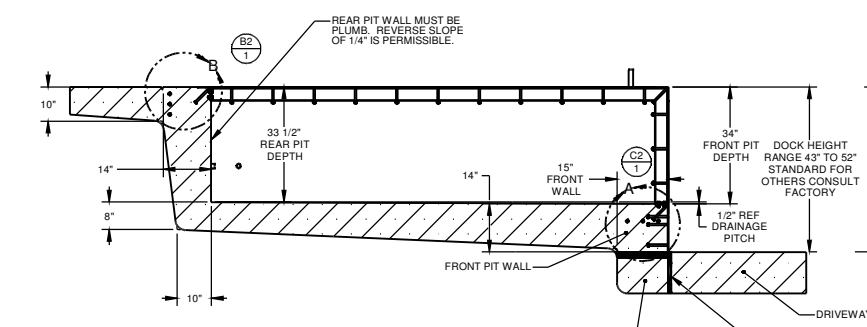
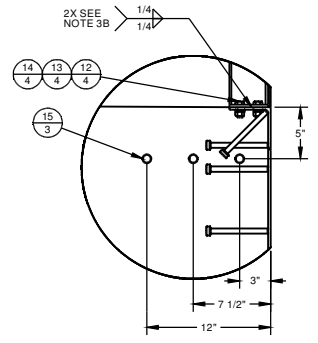


TABLE "A"

HJ LEVELER LENGTH	DIM A PIT LENGTH	DIM B PIT SQUARING DIMENSION REFERENCE	PIT STEEL KIT # OR DRAWING REQUEST #
HJ 8L	85"	134 5/16"	0145700
HJ 10L	109"	150 5/8"	0145701
HJ12L	133"	168 13/16	0145702

REBAR LAYOUT AND PIT STEEL ASSEMBLY



IMPORTANT BUILDING NOTES TO CONSIDER WHEN APPLYING THIS LEVELER:

- 1A) THE PREFERRED DOCK DOOR OPENING WIDTH IS 10' (120"). NOTE: IF A 9' (108") DOOR OPENING IS USED THE TOP LEG OF THE ANGLE ON THE PIT STEEL SIDE FRAME MAY HAVE TO BE CUT AT DOOR FRAME.
- 2A) MULTIPLE LEVELERS IN A ROW WE RECOMMEND A MINIMUM DOOR CENTERLINE OF 14' (168") FOR THIS LEVELER.
- 3A) IF PIPE BOLLARDS ARE USED TO PROTECT THE DOCK DOOR AND BUILDING WALL THEY MUST BE LOCATED AS FOLLOWS: SIDE WALL OF PIT TO CLOSEST EDGE OF PIPE: 8" DOCK FACE OF PIT TO CLOSEST EDGE OF PIPE: 12" PIPE SHOULD EXTEND 6" BELOW DOCK PIT FLOOR (EXAMPLE: 40" ABOVE FLOOR = 34" PIT DEPTH + 6" = 80" TOTAL PIPE LENGTH) LOCAL ARCHITECT TO VERIFY MINIMUM DIMENSIONS FOR YOUR SPECIFIC APPLICATION.

IMPORTANT NOTES PIT CONSTRUCTION:

- 1B) PIT CONSTRUCTION MUST FOLLOW INSTRUCTIONS AND DETAILS OUTLINED IN THIS DOCUMENT. RITE-HITE CORP. WILL NOT BE RESPONSIBLE FOR EQUIPMENT FAILURE DUE TO IMPROPER PIT CONSTRUCTION.
- 2B) PIT STEEL AVAILABLE FROM RITE-HITE AT ADDITIONAL COST SEE TABLE "A". PIT STEEL CAN BE FURNISHED BY GENERAL CONTRACTOR BUT MUST COMPLY TO RITE-HITE DRAWINGS SPECIFICATIONS. TO OBTAIN DETAILED PIT STEEL DRAWINGS FROM RITE-HITE REQUEST PART NUMBER DRAWINGS ONLY FROM TABLE "A".
- 3B) BOLT TOGETHER BOTH SIDE PIT STEEL FRAMES TO FRONT PIT STEEL THEN REAR PIT STEEL. WELDING MAY BE USED IN LIEU OF BOLTING. SEE ADDITIONAL INFORMATION FOR ASSEMBLY/WELDING IN DETAILS "A" & "B".
- 4B) CONCRETE MUST BE 2,500 PSI MINIMUM.

- 5B) CONCRETE PIT MUST BE CONTINUOUS / HOMOGENEOUS POUR.
- 6B) CONCRETE MUST BE WELL VIBRATED AROUND ALL PIT STEEL.
- 7B) CONDUIT STUB THREADS MUST BE COMPLETELY FREE OF DEBRIS, UPON COMPLETION OF PIT CONSTRUCTION.
- 8B) TOLERANCES ± 1/8" (UNLESS OTHERWISE SPECIFIED)

U.S. CUSTOMARY

REF. ITEMS INCLUDED WITH KIT IF PURCHASED

ITEM	QTY	PART NO.	DESCRIPTION
12	8	0111273	BOLT .500-13X1.250 CAP HEX G5 ZP
13	8	0051807	
14	8	0051553	NUT .500-13 HEX ZP
15	6	0116747	REBAR #6 GR60 120L

FINISH UNLESS OTHERWISE SPECIFIED DIMENSIONS ARE IN INCHES. TOLERANCES: XX ± .250 XXX ± .500 XXXX ± .750 XXXXX ± 1.000 THIRD ANGLE PROJECTION	MATERIAL: DRAWN BY: M. A. SWESSEL RESPONSIBLE ENGINEER: T. LATHAM MANUFACTURING ENGINEER:	RITE-HITE® PRODUCTS CORPORATION PIT DETAIL HJ/RHJ50 PIT(34DX104W)	
	REFERENCE: ALL SHEETS ARE THE SAME REVISION STATUS DO NOT SCALE DRAWING	SIZE: D SCALE: 1:18 SHEET: 1 OF 2	DWG NO: 0116782 REV: E

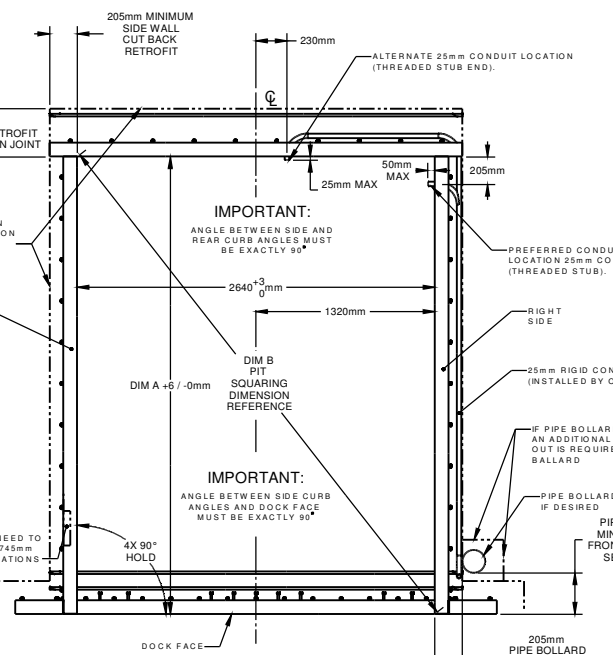
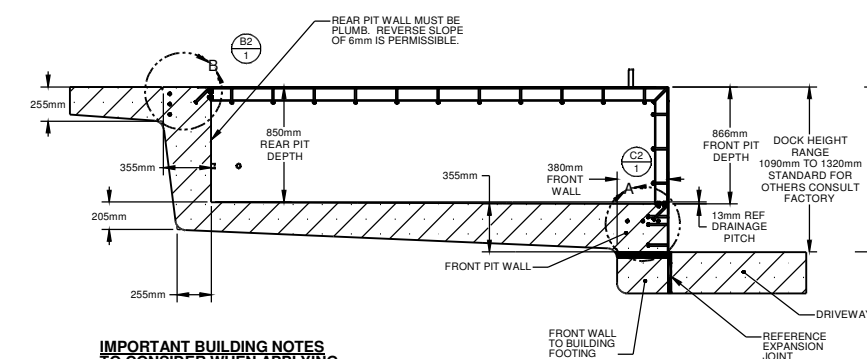
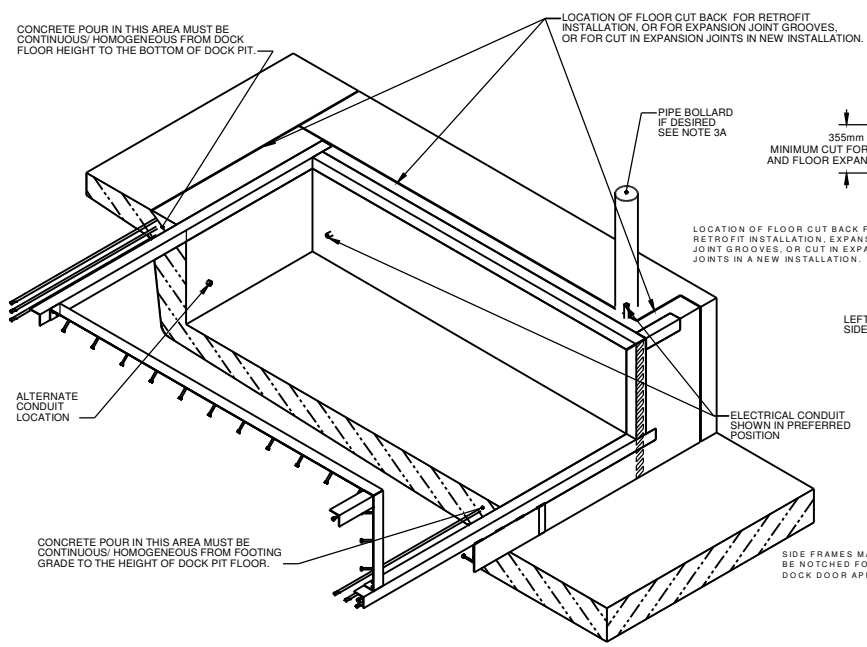
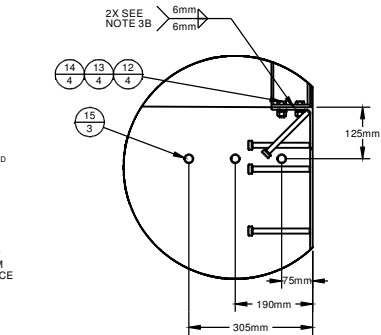
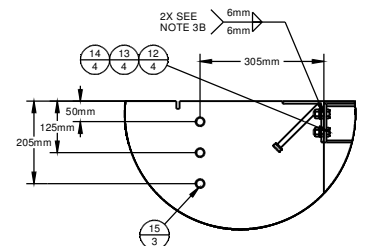


TABLE "A"			
HJ LEVELER LENGTH	DIM A PIT LENGTH	DIM B PIT SQUARING DIMENSION REFERENCE	PIT STEEL KIT # OR DRAWING REQUEST #
HJ 8L	2160mm	3412mm	0145700
HJ 10L	2770mm	3825mm	0145701
HJ12L	3380mm	4288mm	0145702

REBAR LAYOUT AND PIT STEEL ASSEMBLY



DETAIL A SCALE 1:6



DETAIL B SCALE 1:6

IMPORTANT BUILDING NOTES TO CONSIDER WHEN APPLYING THIS LEVELER:

- 1A) THE PREFERRED DOCK DOOR OPENING WIDTH IS 3050mm. NOTE: IF A 2745mm DOOR OPENING IS USED THE TOP LEG OF THE ANGLE ON THE PIT STEEL SIDE FRAME MAY HAVE TO BE CUT AT DOOR FRAME.
- 2A) MULTIPLE LEVELERS IN A ROW WE RECOMMEND A MINIMUM DOOR CENTERLINE OF 4270mm FOR THIS LEVELER.
- 3A) IF PIPE BOLLARDS ARE USED TO PROTECT THE DOCK DOOR AND BUILDING WALL THEY MUST BE LOCATED AS FOLLOWS: SIDE WALL OF PIT TO CLOSEST EDGE OF PIPE: 200mm DOCK FACE OF PIT TO CLOSEST EDGE OF PIPE: 305mm PIPE SHOULD EXTEND 150mm BELOW DOCK PIT FLOOR (EXAMPLE: 1015mm ABOVE FLOOR + 865mm PIT DEPTH + 150mm = 2030mm TOTAL PIPE LENGTH). LOCAL ARCHITECT TO VERIFY MINIMUM DIMENSIONS FOR YOUR SPECIFIC APPLICATION.

IMPORTANT NOTES PIT CONSTRUCTION:

- 1B) PIT CONSTRUCTION MUST FOLLOW INSTRUCTIONS AND DETAILS OUTLINED IN THIS DOCUMENT. RITE-HITE CORP. WILL NOT BE RESPONSIBLE FOR EQUIPMENT FAILURE DUE TO IMPROPER PIT CONSTRUCTION.
- 2B) PIT STEEL AVAILABLE FROM RITE-HITE AT ADDITIONAL COST SEE TABLE "A". PIT STEEL CAN BE FURNISHED BY GENERAL CONTRACTOR BUT MUST COMPLY TO RITE-HITE DRAWINGS SPECIFICATIONS. TO OBTAIN DETAILED PIT STEEL DRAWINGS FROM RITE-HITE REQUEST PART NUMBER DRAWINGS ONLY FROM TABLE "A".
- 3B) BOLT TOGETHER BOTH SIDE PIT STEEL FRAMES TO FRONT PIT STEEL THEN REAR PIT STEEL. WELDING MAY BE USED IN LIEU OF BOLTING. SEE ADDITIONAL INFORMATION FOR ASSEMBLY/WELDING IN DETAILS "A" & "B".
- 4B) CONCRETE MUST BE 2,500 PSI MINIMUM.

- 5B) CONCRETE PIT MUST BE CONTINUOUS / HOMOGENEOUS POUR.
- 6B) CONCRETE MUST BE WELL VIBRATED AROUND ALL PIT STEEL.
- 7B) CONDUIT STUB THREADS MUST BE COMPLETELY FREE OF DEBRIS, UPON COMPLETION OF PIT CONSTRUCTION.
- 8B) TOLERANCES ±3mm (UNLESS OTHERWISE SPECIFIED)

METRIC

REF. ITEMS INCLUDED WITH KIT IF PURCHASED

ITEM QTY	PART NO.	DESCRIPTION
12 8	0111273	BOLT .500-13X1.250 CAP HEX G5
13 8	0051807	WSHR SPLIT LK .50 ZP
14 8	0051553	NUT .500-13 HEX ZP
15 6	0116747	REBAR #6 GR60 120L

FINISH UNLESS OTHERWISE SPECIFIED DIMENSIONS ARE IN INCHES. TOLERANCES: XX = ±.050 XXX = ±.030 XXXX = ±.020 XXXX = ±.010	MATERIAL: DRAWN BY: M. A. SWESSEL RESPONSIBLE ENGINEER: MANUFACTURING ENGINEER: T. LATHAM	RITE-HITE® PRODUCTS CORPORATION	
	REFERENCE: ALL SHEETS ARE THE SAME REVISION STATUS DO NOT SCALE DRAWING	TITLE: PIT DETAIL HJ/RHJ50 PIT(34DX104W)	SIZE: D SCALE: 1:18