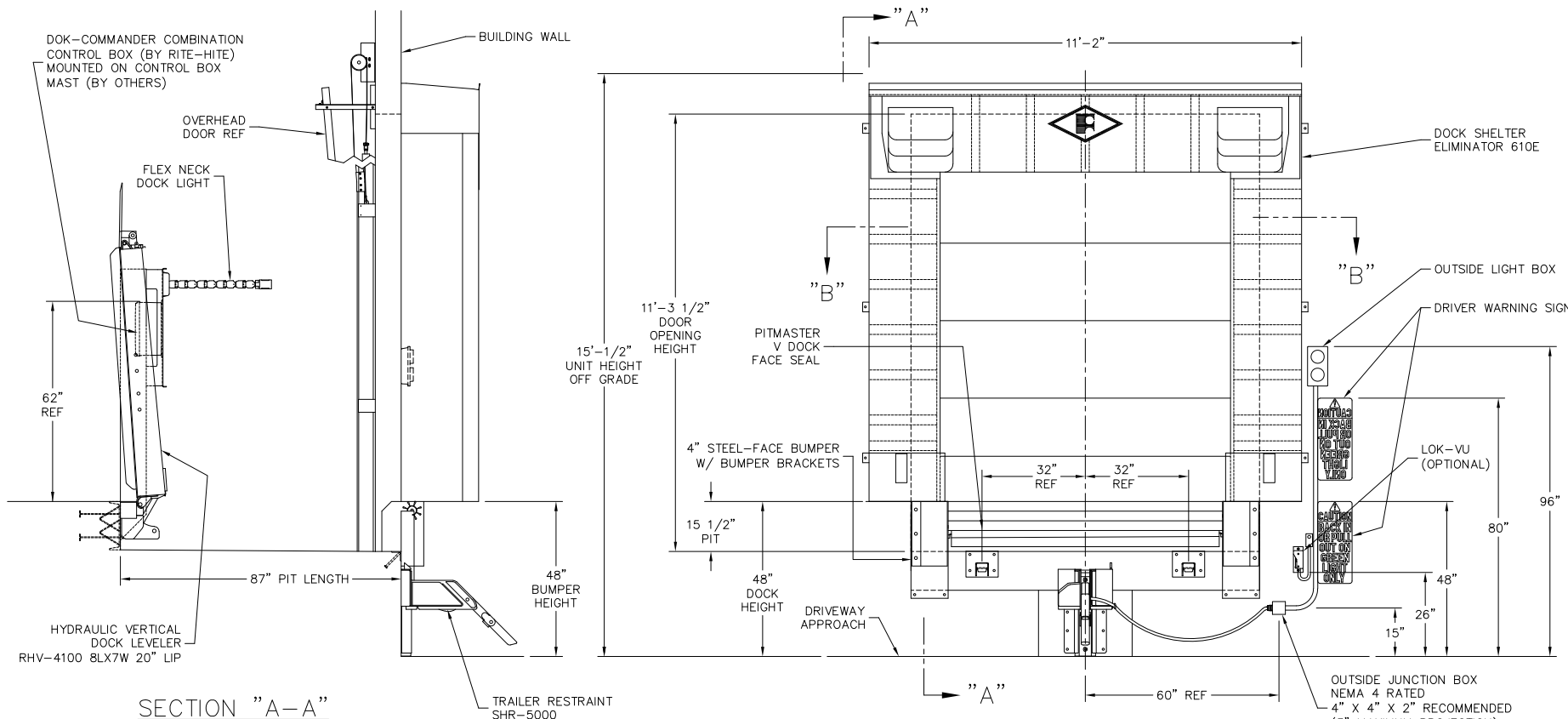


REVISION HISTORY			
REV	DATE	DESCRIPTION	APPROVED BY



SECTION "A-A"

SECTION "B-B"

CUSTOMER NAME:

HYDRAULIC VERTICAL DOCK LEVELERS  
RHV-4100 8L X 7W 20" LIP

TRAILER RESTRAINTS  
SHR-5000

DOCK SHELTERS  
ELIMINATOR 610E  
(DOOR OPENING: 10'-0"W X 11'-1/2"H)

COMBINATION CONTROL BOXES  
DOK-COMMANDER

PRELIMINARY DRAWING,  
FOR REFERENCE ONLY.  
DO NOT USE FOR  
PRODUCTION PURPOSES

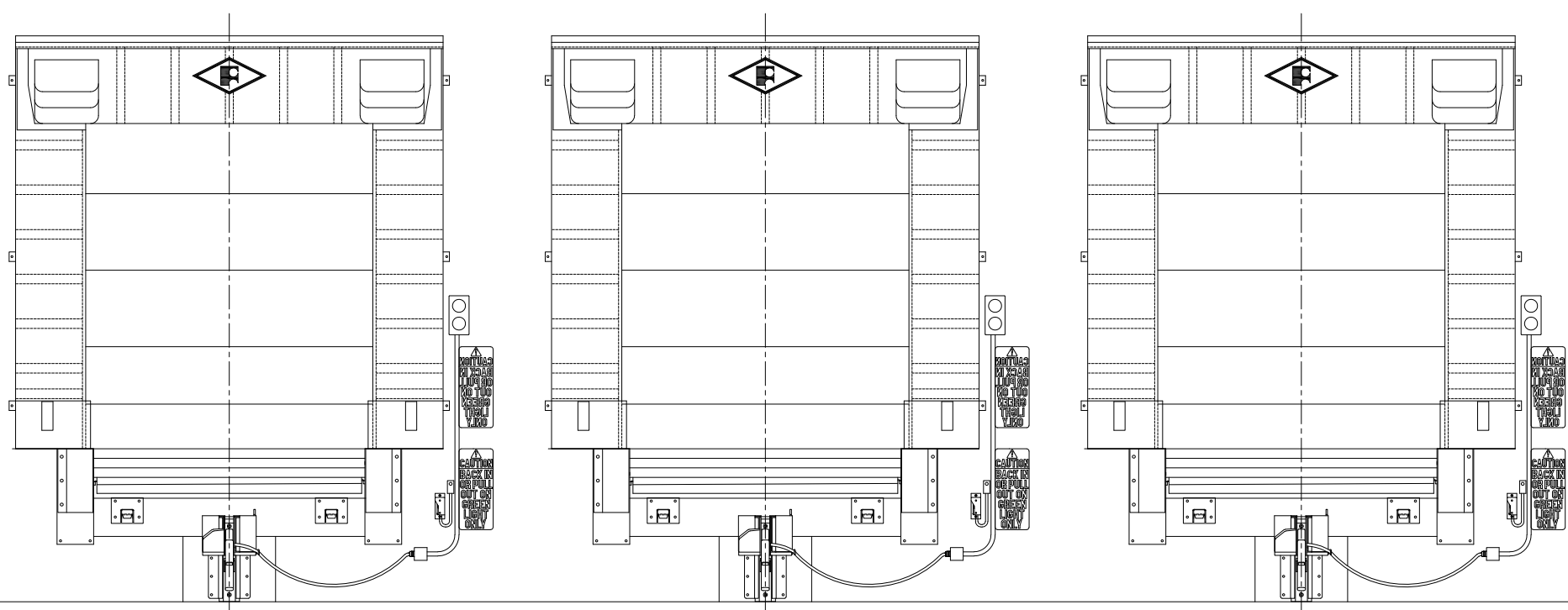
\* DOCK HEIGHT AND PIT DEPTH ARE DEPENDENT UPON 1% INCLINE (TOWARDS THE DOCK) DRIVE APPROACH. APPROACH GRADE MUST BE VERIFIED PRIOR TO DETERMINING FINAL PIT DEPTH AND/OR DOCK HEIGHT, AND PRIOR TO RELEASING EQUIPMENT.

ELECTRICAL CONTRACTOR TO PROVIDE; FUSED DISCONNECT AT EACH DOCK LOCATION, CONDUIT, ELECTRICAL WIRING, AND FINAL HOOKUP.

- NOTES:
1. WARNING SIGNS & OUTSIDE LIGHT BOX SHOULD BE MOUNTED AS CLOSE AS POSSIBLE TO OUTSIDE EDGE OF DOCK SHELTER. DO NOT RUN CONDUIT IN FRONT OF WARNING SIGNS.
  2. IF PRE-CAST OR TILT-UP PANELS ARE PRESENT, USE MASONRY SCREWS FOR MOUNTING SIGNS AND LIGHT BOX. THE USE OF AUTOMATIC ANCHOR DRIVERS ON PRE-CAST OR TILT-UP PANELS IS NOT ACCEPTABLE.

CONFIDENTIAL	UNLESS OTHERWISE SPECIFIED DIMENSIONS ARE IN INCHES	MATERIAL / PART NUMBER	
	THIS DOCUMENT IS THE PROPERTY OF RITE-HITE® PRODUCTS CORPORATION. SUBJECT MATTER HEREIN IS CONFIDENTIAL. DO NOT USE, REPRODUCE, COPY OR DISCLOSE EXCEPT WITH WRITTEN CONSENT OF RITE-HITE® PRODUCTS CORPORATION. ©2023 RITE-HITE® PRODUCTS CORPORATION	DRAWN BY T. COTTON RESPONSIBLE ENGINEER	<b>RITE-HITE®</b> <b>PRODUCTS CORPORATION</b>
TOLERANCES: .X = ±.120 .XX = ±.060 .XXX = ±.030 ANGLES = ±2.0°	THIRD ANGLE PROJECTION	REFERENCE 82409ML ALL SHEETS ARE THE SAME REVISION STATUS DO NOT SCALE DRAWING	TITLE RITE-HITE CORPORATION RHV4100 RECOMMENDATIONS GENERAL EQUIPMENT & LAYOUT
SCALE 1=16	SHEET 1	SIZE D	DWG NO AP-3761 REV -

REVISION HISTORY			
REV	DATE	DESCRIPTION	APPROVED BY



14'-0" (168") DOOR CENTERLINE TYP  
(13'-0" MINIMUM DOOR CENTERLINE)

PRELIMINARY DRAWING,  
FOR REFERENCE ONLY.  
DO NOT USE FOR  
PRODUCTION PURPOSES

HYDRAULIC VERTICAL DOCK LEVELERS  
RHV-4100 8X7 20" LIP

TRAILER RESTRAINTS  
SHR-5000

DOCK SEALS  
ELIMINATOR 610E

COMBINATION CONTROL BOXES  
DOK-COMMANDER

**CONFIDENTIAL**

THIS DOCUMENT IS THE PROPERTY OF RITE-HITE® PRODUCTS CORPORATION. SUBJECT MATTER HEREIN IS CONFIDENTIAL. DO NOT USE, REPRODUCE, COPY OR DISCLOSE EXCEPT WITH WRITTEN CONSENT OF RITE-HITE® PRODUCTS CORPORATION.

©2023 RITE-HITE® PRODUCTS CORPORATION

UNLESS OTHERWISE SPECIFIED DIMENSIONS ARE IN INCHES

TOLERANCES:  
.X = ±.120  
.XX = ±.060  
.XXX = ±.030  
ANGLES = ±2.0°

THIRD ANGLE PROJECTION

MATERIAL / PART NUMBER

DRAWN BY T. COTTON

RESPONSIBLE ENGINEER

REFERENCE 82409ML

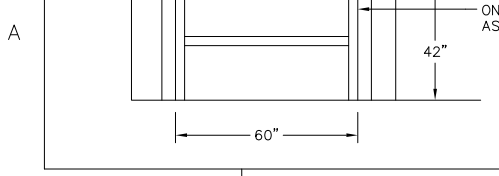
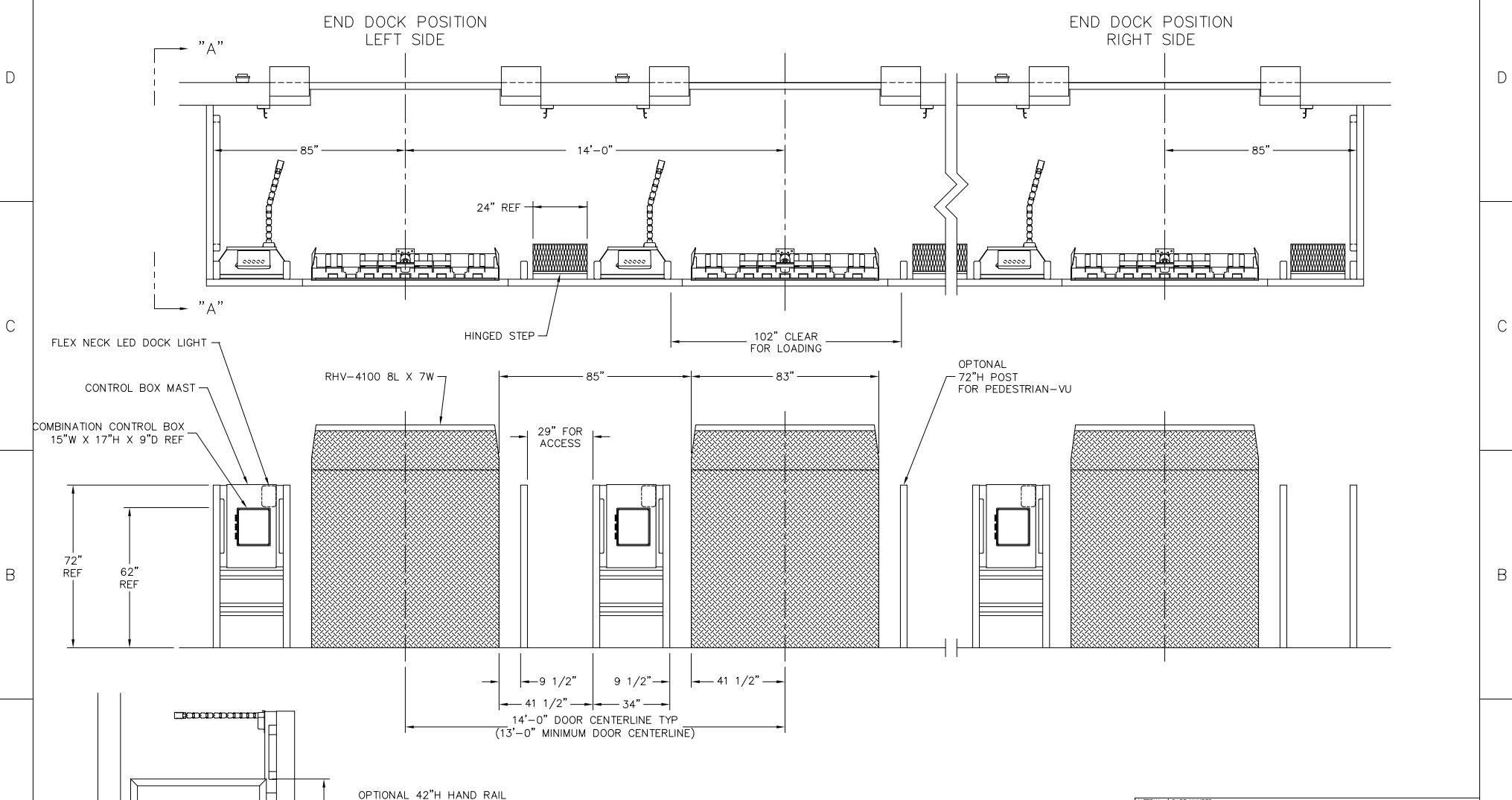
ALL SHEETS ARE THE SAME REVISION STATUS  
DO NOT SCALE DRAWING

**RITE-HITE®  
PRODUCTS CORPORATION**

TITLE  
RITE-HITE CORPORATION  
RHV4100 RECOMMENDATIONS  
DOOR CENTERLINES

SIZE D	DWG NO AP-3761	REV -
SCALE 1=16	WEIGHT	SHEET 2

REVISION HISTORY				
REV	DATE	DESCRIPTION	ECN	APPROVED BY



VIEW "A-A"

THIS DRAWING IS FOR REFERENCE ONLY. DO NOT USE FOR PRODUCTION/CONSTRUCTION PURPOSES.

**CONFIDENTIAL**

THIS DOCUMENT IS THE PROPERTY OF RITE-HITE® PRODUCTS CORPORATION. SUBJECT MATTER HEREIN IS CONFIDENTIAL. DO NOT USE, REPRODUCE, COPY OR DISCLOSE EXCEPT WITH WRITTEN CONSENT OF RITE-HITE® PRODUCTS CORPORATION.

©2023 RITE-HITE® PRODUCTS CORPORATION

UNLESS OTHERWISE SPECIFIED DIMENSIONS ARE IN INCHES

TOLERANCES:  
 .X = ±.120  
 .XX = ±.060  
 .XXX = ±0.030  
 ANGLES = ±2.0°

THIRD ANGLE PROJECTION

MATERIAL / PART NUMBER		DRAWN BY <b>T. COTTON</b>		<b>RITE-HITE® PRODUCTS CORPORATION</b>	
RESPONSIBLE ENGINEER		RESPONSIBLE ENGINEER			
REFERENCE 82409ML				SIZE D	DWG NO AP-3761
ALL SHEETS ARE THE SAME REVISION STATUS				SCALE 1=20	WEIGHT
DO NOT SCALE DRAWING				SHEET 3	REV

NOTES:

- PIT CONSTRUCTION MUST FOLLOW INSTRUCTIONS AND DETAILS OUTLINED IN THIS DOCUMENT. THE RITE-HITE CORP. WILL NOT BE RESPONSIBLE FOR EQUIPMENT FAILURE DUE TO IMPROPER PIT CONSTRUCTION.
- CONCRETE MUST BE 3000 PSI MINIMUM, MUST WELL VIBRATED & FREE OF VOIDS.
- 8" RECOMMENDED MINIMUM SOLID CONCRETE THICKNESS FOR PIT FLOOR, DOCK FACE, BUILDING WALL, AND FOUNDATION. 18" MINIMUM SOLID CONCRETE THICKNESS BEHIND REAR PIT STEEL.
- ALL PIT STEEL JOINTS TO BE WELDED SECURELY.
- FOUNDATION AND/OR BUILDING WALL MUST BE DESIGNED TO WITHSTAND THE IMPACT OF A TRACTOR/TRAILER.
- EMBEDDED REAR CHANNEL MUST BE ONE CONTINUOUS PIECE OF STEEL. NO SEAMS PERMISSIBLE.
- ALL DIMENSIONS  $\pm 1/4"$  UNLESS OTHERWISE SPECIFIED.
- ALL PIT STEEL TO BE FURNISHED BY OTHERS, UNLESS OTHERWISE SPECIFIED.
- CONDUIT AND ELECTRICAL WIRING BY OTHERS.
- BUILDING ARCHITECT IS RESPONSIBLE FOR MEETING LOCAL CODES REGARDING STEP-DOWN REGULATIONS.
- BUILDING ARCHITECT IS RESPONSIBLE FOR TYING REBAR TO EMBEDDED REAR CHANNEL PER LOADS PROVIDED.

NOMINAL LEVELER SIZE	PIT LENGTH DIM "A"	REAR CHANNEL LOCATION DIM "B"	REAR CHANNEL LENGTH DIM "C"	REAR PIT DEPTH DIM "D"	FOUNDATION WALL OPENING & FRONT CHANNEL LENGTH DIM "E"
8L X 7W	87"	45 1/2"	91"	15"	108"

EMBEDDED REAR CHANNEL  
SEE SHEET #0175884 FOR DETAILS  
(NOTE: REAR PIT STEEL MUST BE ONE CONTINUOUS PIECE OF STEEL NO SEAMS PERMISSIBLE)

REAR CHANNEL IN BETWEEN EMBEDDED REAR CHANNELS  
SEE SHEET #7 FOR DETAILS

EMBEDDED BUMPER MOUNTING PLATE  
SEE SHEET #5 FOR DETAILS

BUMPER MOUNTING PLATES SHOULD BE ORIENTATED SO STUD ANCHORS ARE LOCATED TOWARDS INSIDE OF BUILDING

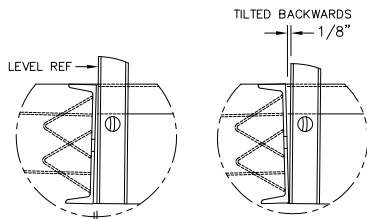
Ø1" EMBEDDED CONDUIT  
ROUTED TO CONTROL BOX  
MOUNTING LOCATION

REAR CHANNEL ON END POSITIONS  
SEE SHEET #7 FOR DETAILS

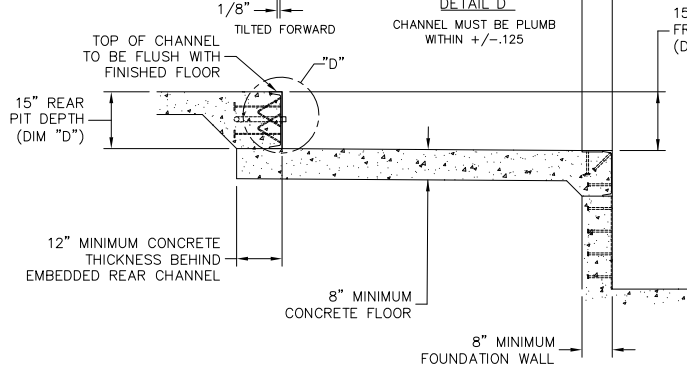
85" (MINIMUM) FROM CENTERLINE TO SIDE PIT WALL ON "END" POSITIONS

SIDE CURB STEEL (WHERE REQUIRED)

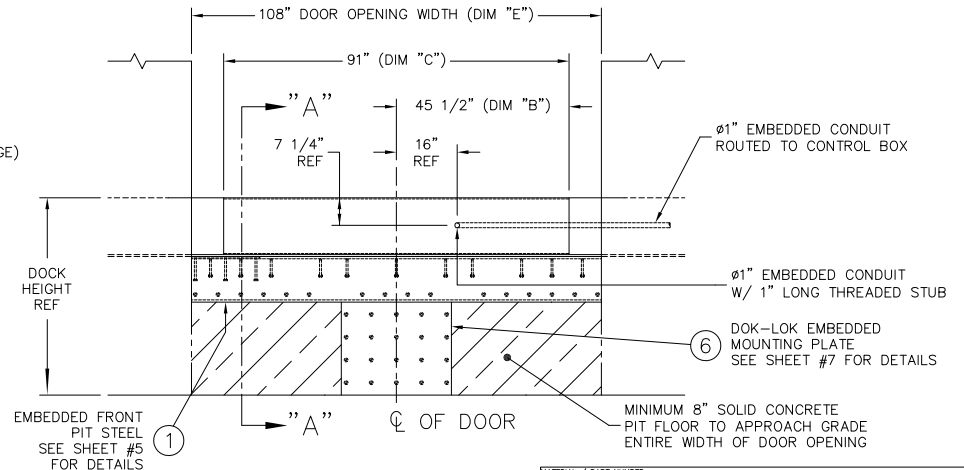
DOOR JAMB THICKNESS (8" MINIMUM)  
\*TO BE VERIFIED PRIOR TO EQUIPMENT ORDER



DETAIL "D"  
CHANNEL MUST BE PLUMB WITHIN  $\pm 1/125$



SECTION "A-A"

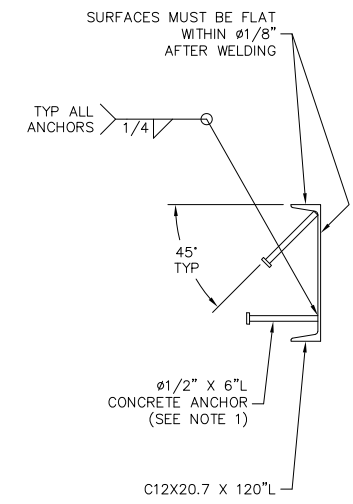
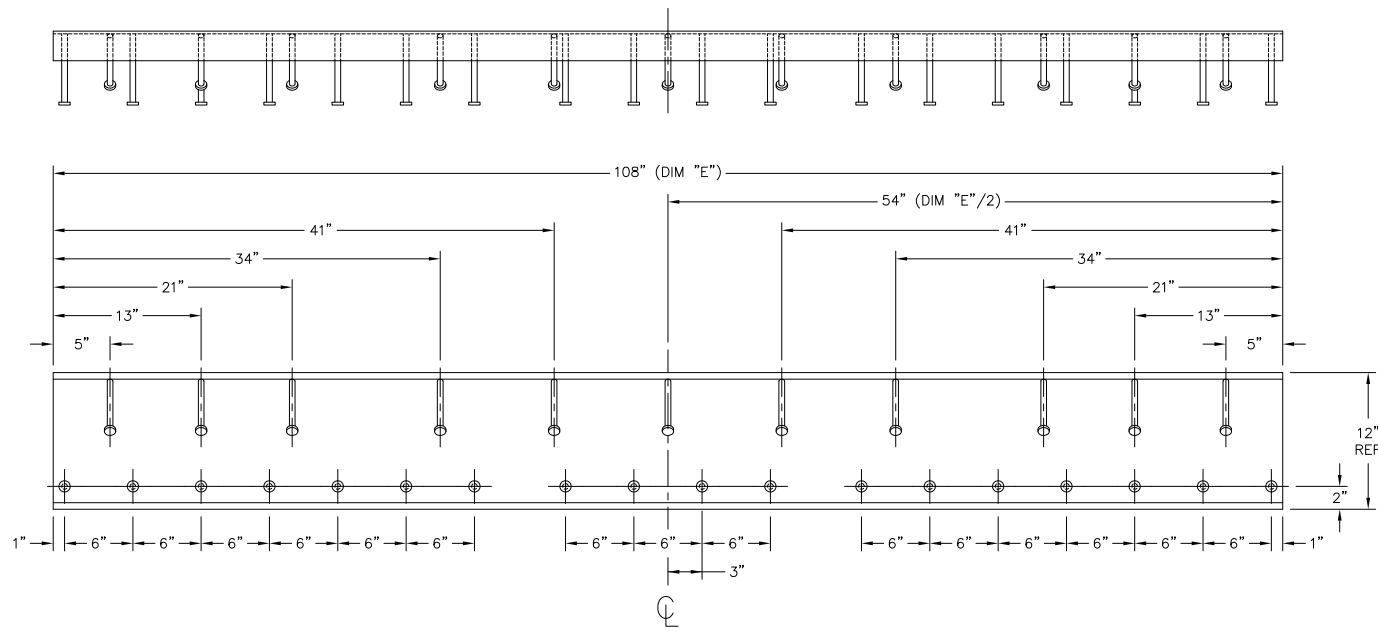


REVISION HISTORY			
REV	DATE	DESCRIPTION	APPROVED BY

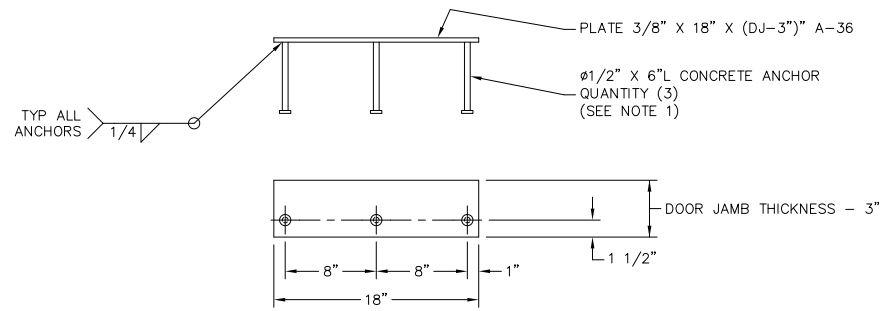
<p>CONFIDENTIAL</p> <p>UNLESS OTHERWISE SPECIFIED DIMENSIONS ARE IN INCHES</p> <p>THIS DOCUMENT IS THE PROPERTY OF RITE-HITE® PRODUCTS CORPORATION. SUBJECT MATTER HEREIN IS CONFIDENTIAL. DO NOT USE, REPRODUCE, COPY OR DISCLOSE EXCEPT WITH WRITTEN CONSENT OF RITE-HITE® PRODUCTS CORPORATION.</p> <p>©2023 RITE-HITE® PRODUCTS CORPORATION</p>	<p>DRAWN BY: T. COTTON</p> <p>RESPONSIBLE ENGINEER</p>	<p><b>RITE-HITE® PRODUCTS CORPORATION</b></p> <p>TITLE: RITE-HITE CORPORATION RHW-4100 PIT DETAILS CONTINUOUS PIT - 15D</p>
	<p>THIRD ANGLE PROJECTION</p> <p>SCALE 1=16</p>	<p>REFERENCE: 80249ML</p> <p>ALL SHEETS ARE THE SAME REVISION STATUS</p> <p>DO NOT SCALE DRAWING</p>

2		1	
REVISION HISTORY			
REV	DATE	DESCRIPTION	APPROVED BY

**LOWER FRONT EMBEDDED CHANNEL – ITEM 1**  
(1) REQUIRED PER DOCK POSITION



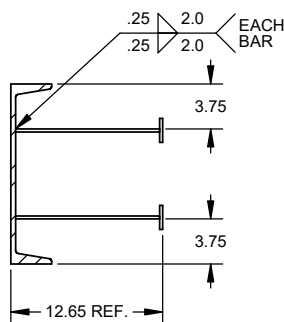
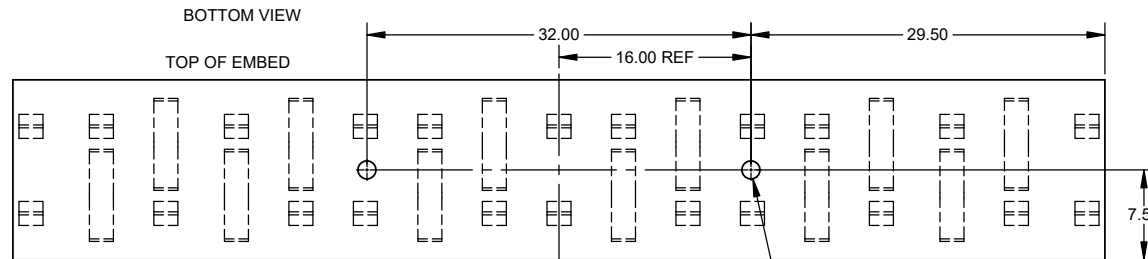
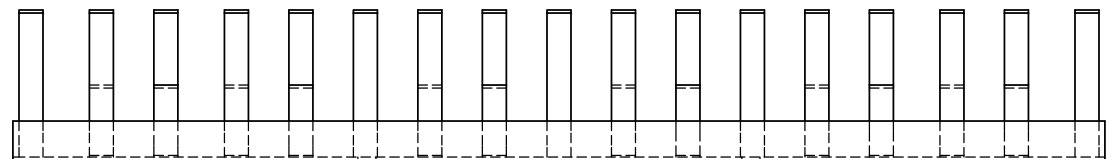
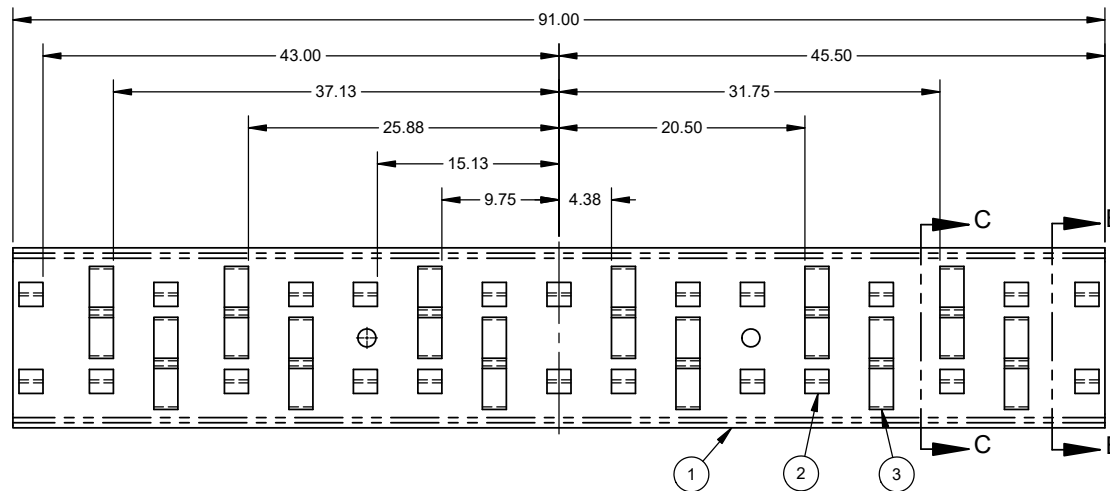
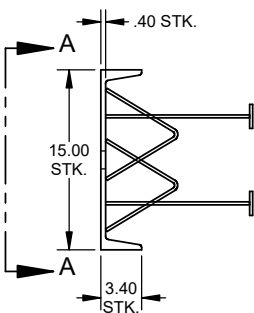
**EMBEDDED BUMPER SUPPORT PLATE – ITEM 2**  
(2) REQUIRED PER DOCK POSITION



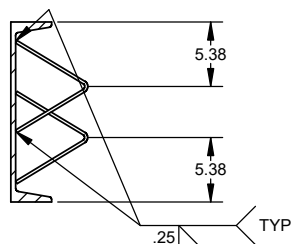
- NOTES:  
 1. HEADED CONCRETE ANCHOR  $\phi 1/2"$  X 6"  
 2. IF CONCRETE ANCHORS ARE TO BE STUD WELDED, PIT STEEL MUST BE SAND BLASTED. OTHERWISE CONCRETE ANCHORS MUST BE WELDED BY HAND.  
 3. STEEL FABRICATION BY OTHERS.

<b>CONFIDENTIAL</b> <small>THIS DOCUMENT IS THE PROPERTY OF RITE-HITE® PRODUCTS CORPORATION. SUBJECT MATTER HEREIN IS CONFIDENTIAL. DO NOT USE, REPRODUCE, COPY OR DISCLOSE EXCEPT WITH WRITTEN CONSENT OF RITE-HITE® PRODUCTS CORPORATION.</small> <small>©2023 RITE-HITE® PRODUCTS CORPORATION</small>	<small>UNLESS OTHERWISE SPECIFIED DIMENSIONS ARE IN INCHES</small> <small>TOLERANCES:</small> .X = ±.120 .XX = ±.060 .XXX = ±.030 ANGLES = ±2.0°	<small>MATERIAL / PART NUMBER</small> DRAWN BY: <b>T. COTTON</b> RESPONSIBLE ENGINEER	<b>RITE-HITE® PRODUCTS CORPORATION</b> <small>TITLE</small> <b>RITE-HITE CORPORATION        RHV-4100 PIT DETAILS        FRONT PIT STEEL</b>	
	<small>THIRD ANGLE PROJECTION</small> 	<small>REFERENCE</small> 82409ML <small>ALL SHEETS ARE THE SAME REVISION STATUS</small> DO NOT SCALE DRAWING	<small>SIZE</small> D <small>DWG NO</small> AP-3761 <small>SCALE</small> 3=16 <small>WEIGHT</small>	<small>REV</small> 5
	<small>DO NOT SCALE DRAWING</small>	<small>SCALE</small> 3=16 <small>WEIGHT</small>	<small>SHEET</small> 5	

REVISION HISTORY				
REV	DATE	DESCRIPTION	ECN	APPROVED BY
A	01/09/2023	RELEASED PER ECN	20220292	B. MCMICHAEL



SECTION B-B



SECTION C-C

**NOTES:**

- 1) BREAK ALL SHARP EDGES.
- 2) REMOVE ALL WELD SPATTER.

ITEM	QTY.	PART NO.	DESCRIPTION
1	1	0140387	CHAN C15 33.9LB/FT 110L
2	22	0176160	ANCHOR WLDMT 2 X 2 X 12.25L
3	12	0054166	ANG FRMD 6 X 6 X .25 X 2L 62DEG

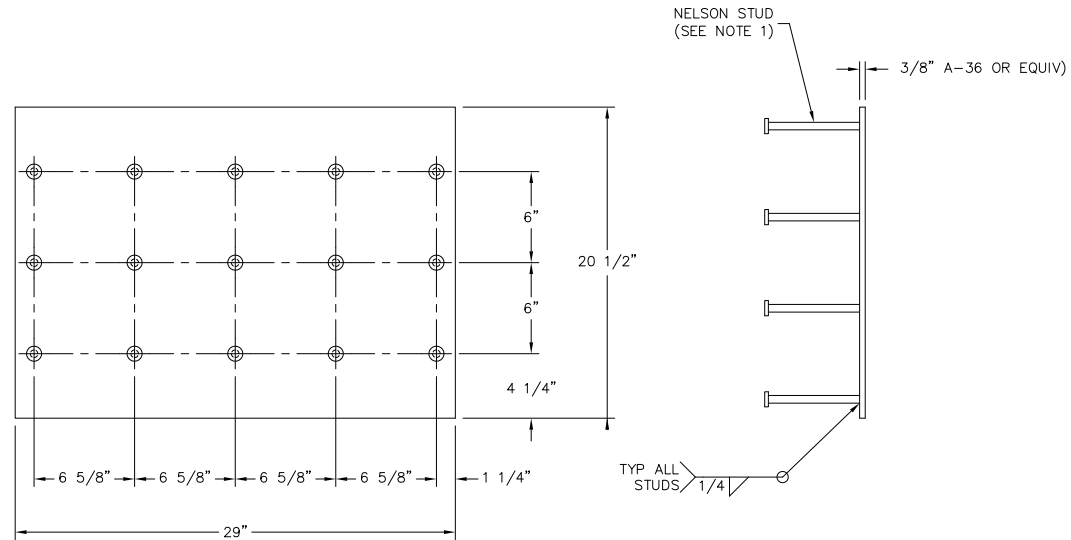
FINISH PAINT ONE COAT RITE-HITE GREY.		MATERIAL	
<b>CONFIDENTIAL</b>		DRAWN BY L. KIKSTRA	
UNLESS OTHERWISE SPECIFIED DIMENSIONS ARE IN INCHES.		RESPONSIBLE ENGINEER B. MCMICHAEL	
TOLERANCES: .X = ±.120 .XX = ±.060 .XXX = ±.030 ANGLE = ±2.0°		MANUFACTURING ENGINEER	
THIRD ANGLE PROJECTION		REFERENCE 0170442	
THIS DOCUMENT IS THE PROPERTY OF RITE-HITE® PRODUCTS CORPORATION SUBJECT MATTER HEREIN IS CONFIDENTIAL. DO NOT USE, REPRODUCE, COPY OR DISCLOSE EXCEPT WITH WRITTEN CONSENT OF RITE-HITE® PRODUCTS CORPORATION.		TITLE CHAN EMB 91L 15D RHV (C-M)	
© 2023 RITE-HITE® PRODUCTS CORPORATION		SIZE C	
DO NOT SCALE DRAWING		DWG NO 0175884	
		SCALE 1:8 WEIGHT 325.30 LBS. SHEET 1 OF 1	



REVISION HISTORY			
REV	DATE	DESCRIPTION	APPROVED BY

## EMBEDDED RESTRAINT MOUNTING PLATE – ITEM 6

1 REQUIRED PER POSITION

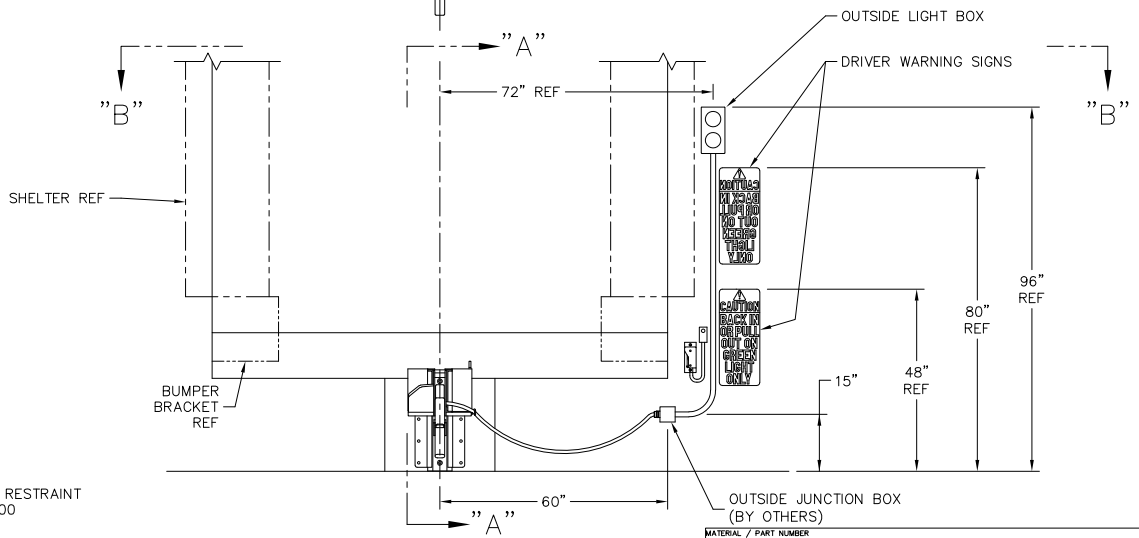
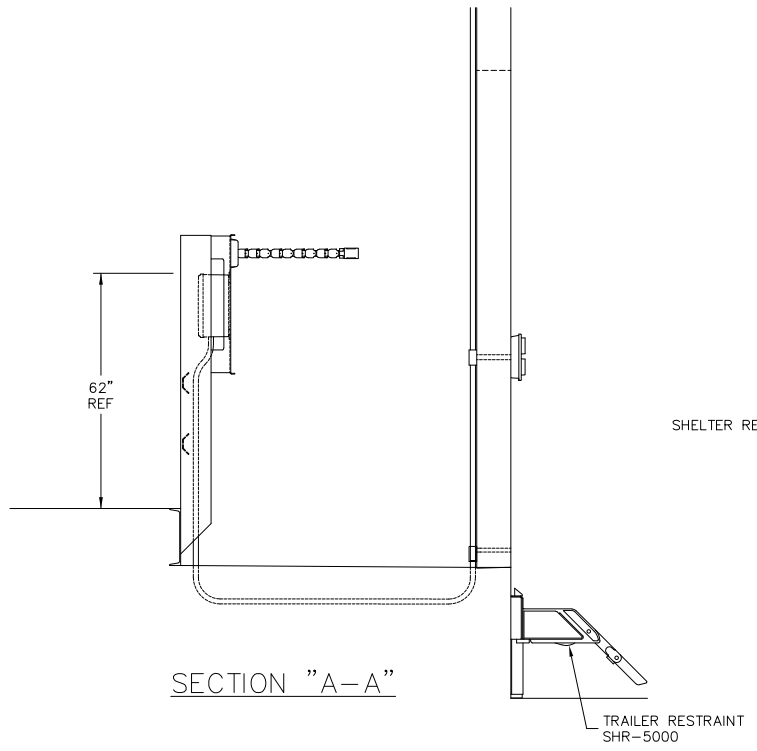
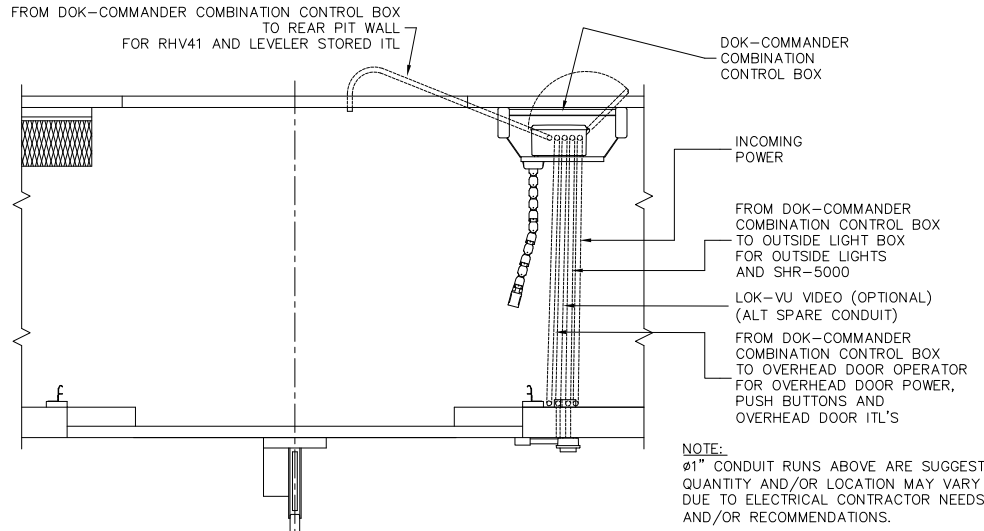


- NOTES:**
- NELSON STUD (CONCRETE ANCHOR) #1/2 X 6L.
  - IF CONCRETE ANCHORS (NELSON STUDS) ARE TO BE STUD WELDED, PIT STEEL MUST BE SAND BLASTED. OTHERWISE CONCRETE ANCHORS MUST BE WELDED BY HAND.

TOLERANCE TO BE ±1/8 UNLESS OTHERWISE SPECIFIED

<small>UNLESS OTHERWISE SPECIFIED DIMENSIONS ARE IN INCHES</small> TOLERANCES: .X = ±.120 .XX = ±.080 .XXX = ±.030 ANGLES = ±2°	DRAWN BY <b>T. COTTON</b>	<b>RITE-HITE®</b> <b>PRODUCTS CORPORATION</b>
	RESPONSIBLE ENGINEER	
THIRD ANGLE PROJECTION	REFERENCE 82409ML	SIZE D
DO NOT SCALE DRAWING	ALL SHEETS ARE THE SAME REVISION STATUS	DWG NO AP-3761
©2023 RITE-HITE® PRODUCTS CORPORATION	SCALE 1=4	WEIGHT SHEET 8

REVISION HISTORY			
REV	DATE	DESCRIPTION	APPROVED BY

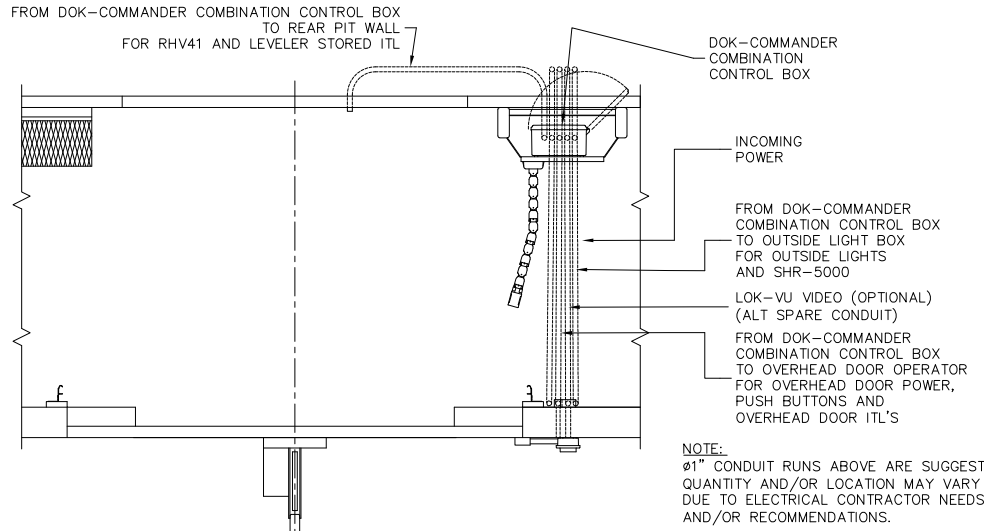


- NOTES:
- ELECTRICAL CONDUIT, WIRING, AND FINAL HOOKUP BY ELECTRICAL CONTRACTOR OR OTHERS.
  - WARNING SIGNS AND OUTSIDE LIGHT BOX SHOULD BE MOUNTED AS CLOSE AS POSSIBLE TO OUTSIDE EDGE OF DOCK SEAL/SHELTER. DO NOT RUN CONDUIT IN FRONT OF WARNING SIGNS.

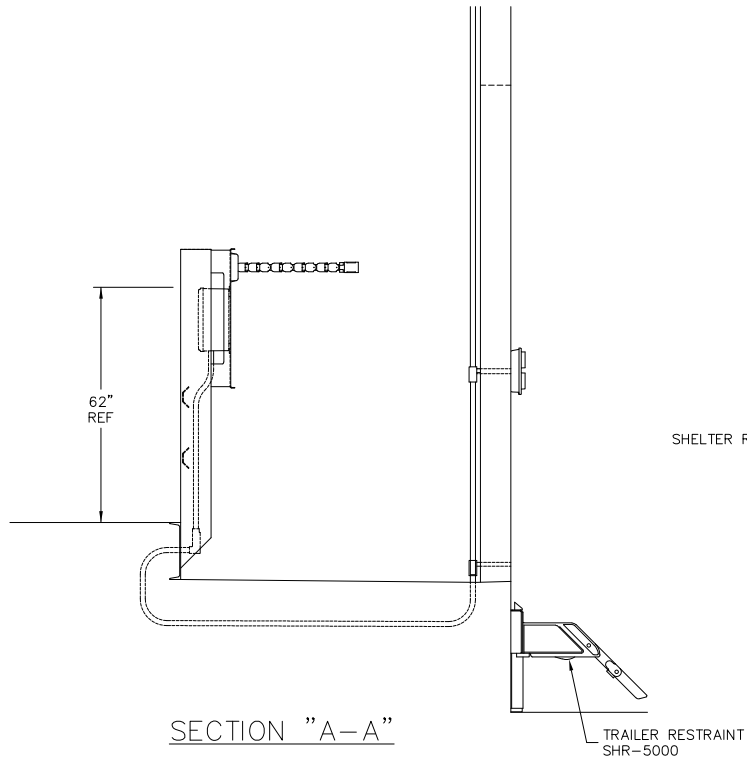
THIS DRAWING IS FOR REFERENCE ONLY. DO NOT USE FOR PRODUCTION PURPOSES

<p><b>CONFIDENTIAL</b></p> <p>THIS DOCUMENT IS THE PROPERTY OF RITE-HITE® PRODUCTS CORPORATION. SUBJECT MATTER HEREIN IS CONFIDENTIAL. DO NOT USE, REPRODUCE, COPY OR DISCLOSE EXCEPT WITH WRITTEN CONSENT OF RITE-HITE® PRODUCTS CORPORATION.</p> <p>©2023 RITE-HITE® PRODUCTS CORPORATION</p>	<p>UNLESS OTHERWISE SPECIFIED DIMENSIONS ARE IN INCHES</p> <p>TOLERANCES:                  .X = ±.120                  .XX = ±.060                  .XXX = ±.030                  ANGLES = ±2.0°</p>	<p>DRAWN BY: T. COTTON</p> <p>RESPONSIBLE ENGINEER</p>	<p><b>RITE-HITE® PRODUCTS CORPORATION</b></p>	
	<p>THIRD ANGLE PROJECTION</p>	<p>REFERENCE: 82409ML</p> <p>ALL SHEETS ARE THE SAME REVISION STATUS</p> <p>DO NOT SCALE DRAWING</p>	<p>SIZE: D</p> <p>SCALE: 1=16</p>	<p>DWG NO: AP-3761</p> <p>WEIGHT</p>

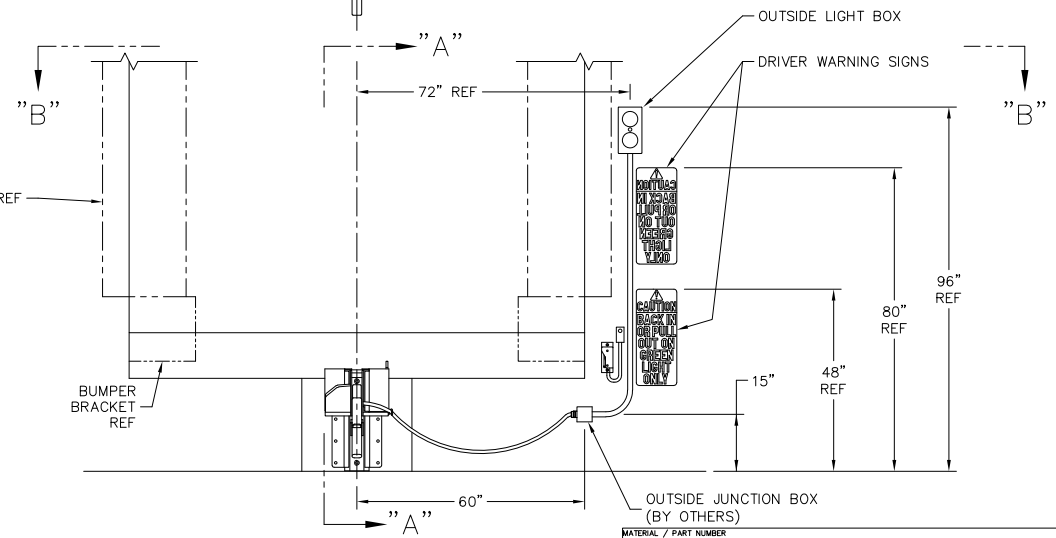
REVISION HISTORY			
REV	DATE	DESCRIPTION	APPROVED BY



SECTION "B-B"



SECTION "A-A"



- NOTES:
1. ELECTRICAL CONDUIT, WIRING, AND FINAL HOOKUP BY ELECTRICAL CONTRACTOR OR OTHERS.
  2. WARNING SIGNS AND OUTSIDE LIGHT BOX SHOULD BE MOUNTED AS CLOSE AS POSSIBLE TO OUTSIDE EDGE OF DOCK SEAL/SHELTER. DO NOT RUN CONDUIT IN FRONT OF WARNING SIGNS.

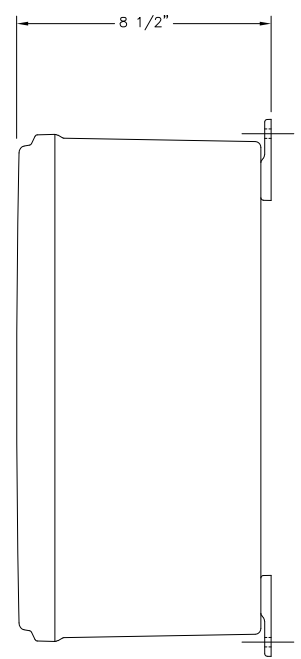
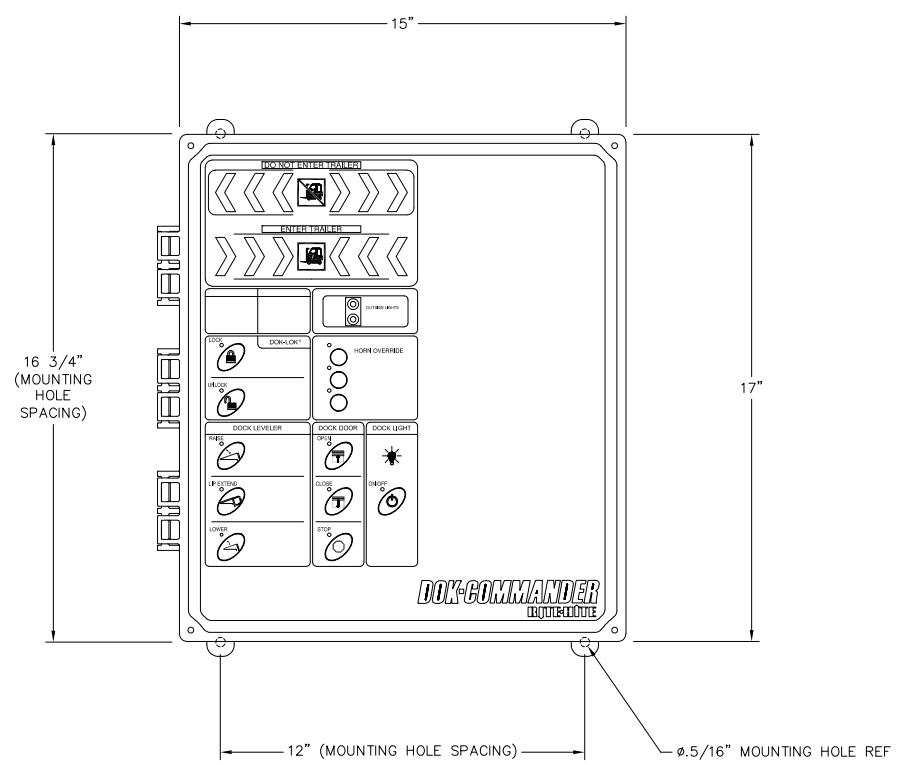
THIS DRAWING IS FOR REFERENCE ONLY. DO NOT USE FOR PRODUCTION PURPOSES

<p><b>CONFIDENTIAL</b></p> <p>THIS DOCUMENT IS THE PROPERTY OF RITE-HITE® PRODUCTS CORPORATION. SUBJECT MATTER HEREIN IS CONFIDENTIAL. DO NOT USE, REPRODUCE, COPY OR DISCLOSE EXCEPT WITH WRITTEN CONSENT OF RITE-HITE® PRODUCTS CORPORATION.</p> <p>©2023 RITE-HITE® PRODUCTS CORPORATION</p>	<p>UNLESS OTHERWISE SPECIFIED DIMENSIONS ARE IN INCHES</p> <p>TOLERANCES:                  .X = ±.120                  .XX = ±.060                  .XXX = ±.030                  ANGLES = ±2.0°</p>	<p>DRAWN BY: T. COTTON</p> <p>RESPONSIBLE ENGINEER</p>	<p><b>RITE-HITE® PRODUCTS CORPORATION</b></p>	
	<p>THIRD ANGLE PROJECTION</p>	<p>REFERENCE: 82409ML</p> <p>ALL SHEETS ARE THE SAME REVISION STATUS</p> <p>DO NOT SCALE DRAWING</p>	<p>SIZE: D</p> <p>SCALE: 1=16</p>	<p>DWG NO: AP-3761</p> <p>WEIGHT</p>

REVISION HISTORY				
REV	DATE	DESCRIPTION	ECN	APPROVED BY

**RITE-HITE SUPPLY CHAIN INTEGRITY  
SEQUENCE OF OPERATION  
(BASED ON ITL'S LISTED BELOW)**

- NO TRUCK/TRAILER AT DOOR**
- RHV-4100 LEVELER IS STORED AND DISABLED
  - OVERHEAD DOOR IS CLOSED AND DISABLED
  - SHR-5000 RESTRAINT IS STORED
    - INSIDE LIGHT IS RED
    - OUTSIDE LIGHT IS GREEN
- TRUCK/TRAILER AT DOOR**
- OPERATOR PASSES LOCK BUTTON
    - VEHICLE RESTRAINT ENGAGES TRUCK/TRAILER
    - INSIDE LIGHT CHANGES TO GREEN
    - OUTSIDE LIGHT CHANGES TO RED
    - OVERHEAD DOOR OPEN BUTTON IS ENABLED
  - OPERATOR OPENS OVERHEAD DOOR
    - RHV-4100 LEVELER IS ENABLED
    - SHR-5000 RESTRAINT UNLOCK BUTTON IS DISABLED
  - OPERATOR OPENS TRAILER DOORS
  - OPERATOR LOWERS RHV-4100 LIP ONTO TRUCK/TRAILER
    - OVERHEAD DOOR CLOSE BUTTON IS DISABLED
  - LOAD/UNLOAD TRUCK/TRAILER
- LOADING/UNLOADING COMPLETE**
- OPERATOR STORES RHV-4100 LEVELER
    - OVERHEAD DOOR CLOSE BUTTON IS ENABLED
  - OPERATOR CLOSES TRAILER DOORS
  - OPERATOR CLOSES OVERHEAD DOOR
    - SHR-5000 RESTRAINT UNLOCK BUTTON IS ENABLED
    - RHV-4100 LEVELER IS DISABLED
  - OPERATOR PASSES SHR-5000 UNLOCK BUTTON
    - SHR-5000 RESTRAINT STORES
    - INSIDE LIGHT CHANGES TO RED
    - OUTSIDE LIGHT CHANGES TO GREEN
    - OVERHEAD DOOR OPEN BUTTON IS DISABLED
  - TRUCK/TRAILER MAY DEPART



**DOK-COMMANDER**

**COMBINATION CONTROLS**

RITE-HITE MODEL: DOK-COMMANDER  
VOLTAGE/PHASE:

CONTROLS: SHR-5000  
RHV-4100

OPTIONS: OVERHEAD DOOR PUSH BUTTONS  
DOCK LIGHT POWER & SELECTOR SWITCH  
ITL(GREEN LIGHT/OPEN OVERHEAD DOOR)  
ITL(OVERHEAD DOOR OPEN/LOWER LEVELER) \*  
ITL(LEVELER STORED/CLOSE OVERHEAD DOOR)  
ITL(OVERHEAD DOOR CLOSED/UNLOCK) \*  
LED INSIDE/OUTSIDE LIGHTS

\* ITL'S WILL UTILIZE CONTACTS IN THE OVERHEAD DOOR OPERATOR

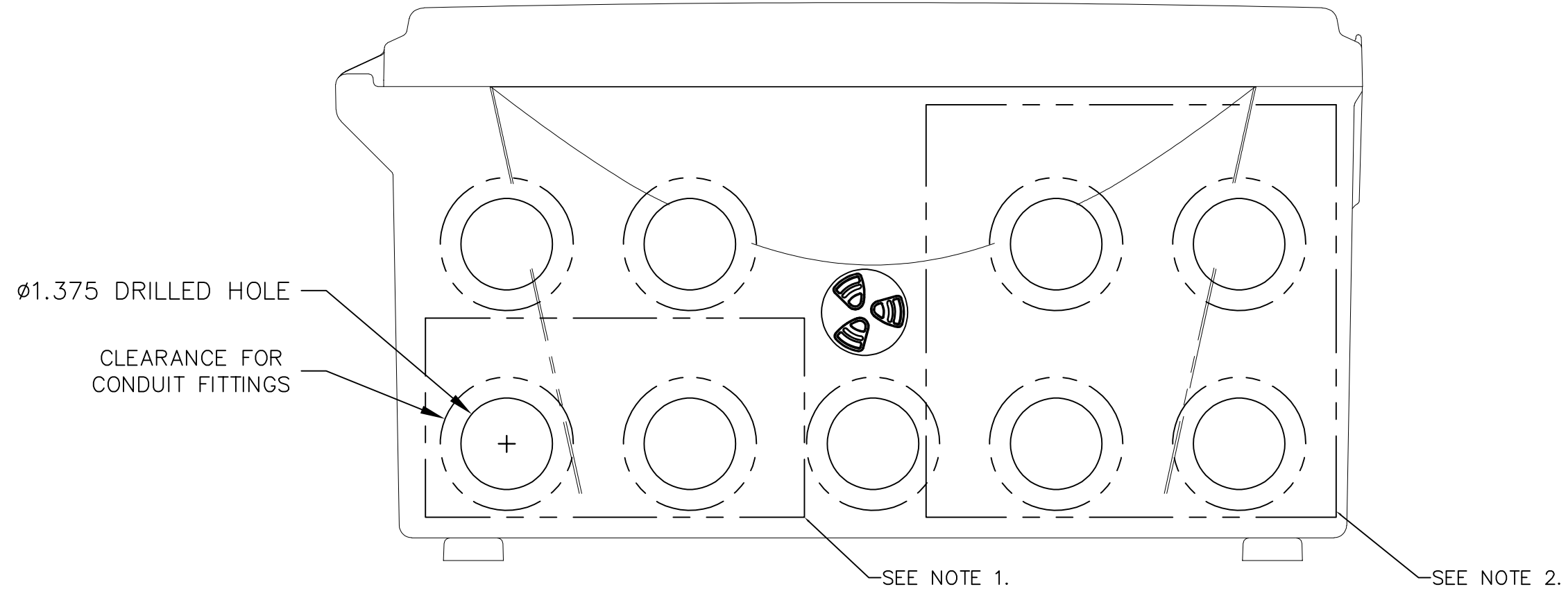
THIS DRAWING IS FOR  
REFERENCE ONLY.  
DO NOT USE FOR  
PRODUCTION PURPOSES

<b>CONFIDENTIAL</b>  THIS DOCUMENT IS THE PROPERTY OF RITE-HITE® PRODUCTS CORPORATION. SUBJECT MATTER HEREIN IS CONFIDENTIAL. DO NOT USE, REPRODUCE, COPY OR DISCLOSE EXCEPT WITH WRITTEN CONSENT OF RITE-HITE® PRODUCTS CORPORATION.  ©2023 RITE-HITE® PRODUCTS CORPORATION	UNLESS OTHERWISE SPECIFIED DIMENSIONS ARE IN INCHES  TOLERANCES: .X = ±.120 .XX = ±.060 .XXX = ±.030 ANGLES = ±2.0°	MATERIAL / PART NUMBER  DRAWN BY: T.COTTON RESPONSIBLE ENGINEER:		<b>RITE-HITE® PRODUCTS CORPORATION</b>	
		REFERENCE: 82409ML ALL SHEETS ARE THE SAME REVISION STATUS DO NOT SCALE DRAWING		TITLE: RITE-HITE CORPORATION RHV4100 DOCK PROPOSAL RHV41/SHR50 DOK-COMMANDER	SIZE: D
THIRD ANGLE PROJECTION 		SCALE: 1=2	WEIGHT:	SHEET: 11	REV: --

8 7 6 5 4 3 2 1

REVISION HISTORY				
REV	DATE	DESCRIPTION	ECN	APPROVED BY
A	01/16/23	INITIAL RELEASE		KLOTZ

BOTTOM OF CONTROL BOX



NOTES:

1. OVERHEAD DOOR POWER DIN RAIL MAY BE TEMPORARILY REMOVED IN ORDER TO DRILL HOLES.
2. TRANSFORMER MAY BE TEMPORARILY REMOVED IN ORDER TO DRILL HOLES.
3. BOTTOM FIVE CONDUIT POSITIONS ARE THE TYPICAL PATTERN FOR INSTALLATION.
4. USE APPROPRIATE NUMBER OF CONDUITS. HOLES SHOWN AS REFERENCES FOR POSITIONS.

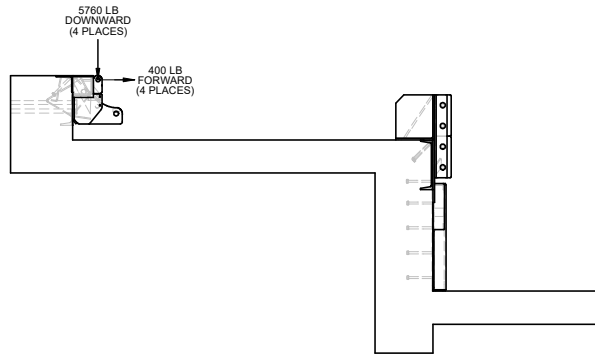
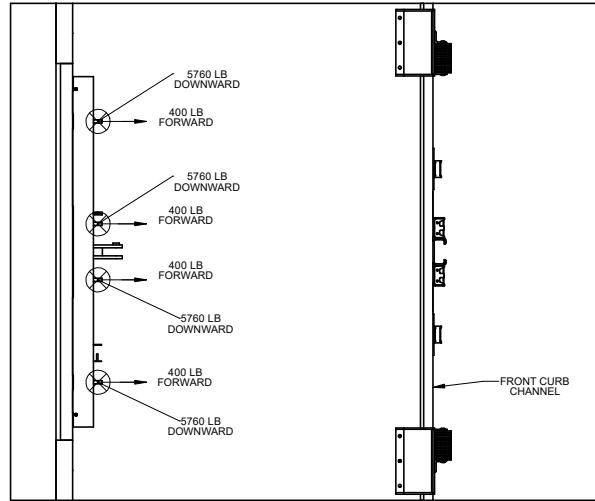
<b>CONFIDENTIAL</b>	UNLESS OTHERWISE SPECIFIED DIMENSIONS ARE IN INCHES  TOLERANCES: .X = ±.120 .XX = ±.060 .XXX = ±.030 ANGLES = ±2.0°	MATERIAL / PART NUMBER	
		DRAWN BY C. PUPP	<b>RITE-HITE® PRODUCTS CORPORATION</b>
		RESPONSIBLE ENGINEER N. KLOTZ	
		THIRD ANGLE PROJECTION	
THIS DOCUMENT IS THE PROPERTY OF RITE-HITE® PRODUCTS CORPORATION. SUBJECT MATTER HEREIN IS CONFIDENTIAL. DO NOT USE, REPRODUCE, COPY OR DISCLOSE EXCEPT WITH WRITTEN CONSENT OF RITE-HITE® PRODUCTS CORPORATION.  ©2022 RITE-HITE® PRODUCTS CORPORATION		ALL SHEETS ARE THE SAME REVISION STATUS	DWG NO SK-3479
		DO NOT SCALE DRAWING	SCALE 1=1
			WEIGHT
			REV A
			SHEET 1 OF 1

8 7 6 5 4 3 2 1

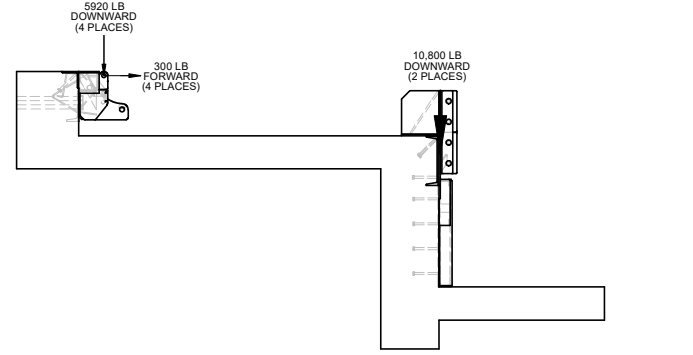
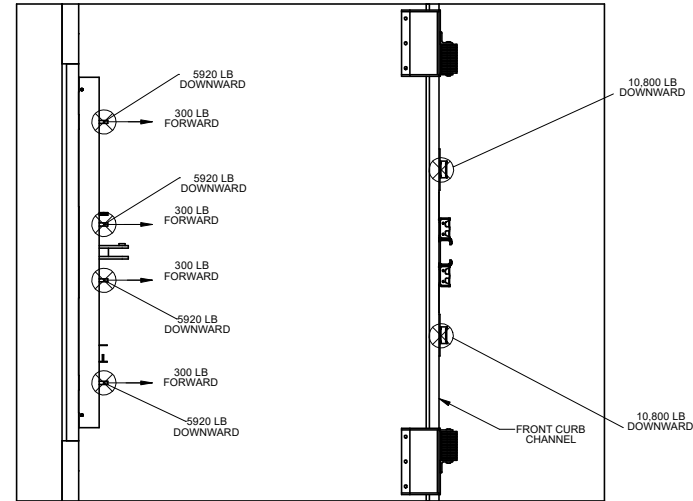
REVISION HISTORY			
REV	DATE	DESCRIPTION	APPROVED BY
A	10/06/2021	RELEASED	N.BEYER

N.BEYER 12/09/2021

### DESIGN LOADS FOR A 20,000LB ROLLOVER @ 4 MPH (LIP POSITIONED ON TRUCK BED, WITH LEVELER AT 12" ABOVE DOCK) 20,000LB ROLLOVER BASED ON ANSI 2000 TEST LOAD



### DESIGN LOADS FOR A 20,000LB ROLLOVER @ 4 MPH (LIP POSITIONED IN LIP KEEPERS) 20,000LB ROLLOVER BASED ON ANSI 2000 TEST LOAD



- NOTES:**
- 1) REFERENCE PIT DETAILS FOR PIT CONSTRUCTION.
  - 2) REFERENCE INSTALLATION MANUAL (RITEHITE# 0129350) FOR FIELD WELDING TO PIT STEEL.

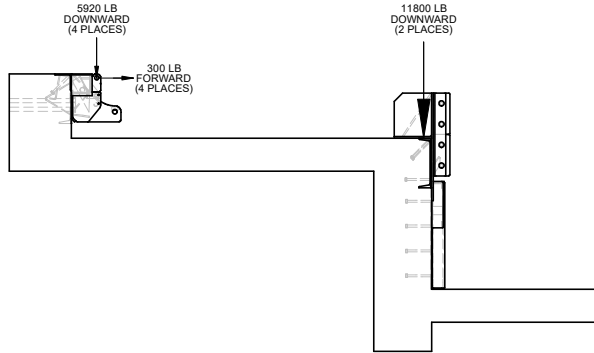
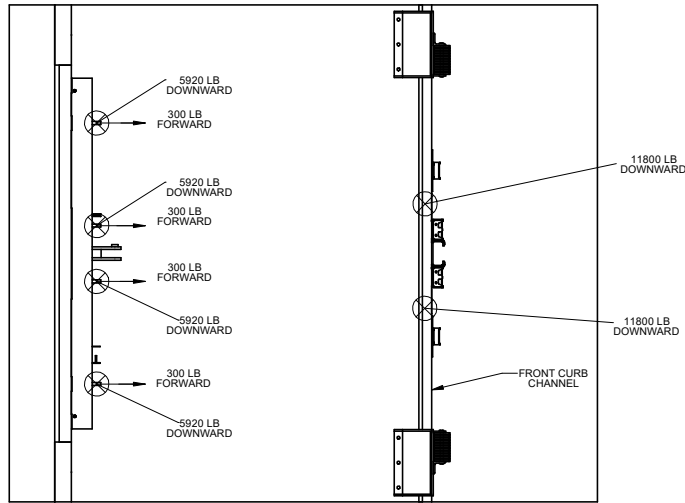
<b>CONFIDENTIAL</b>  THIS DOCUMENT IS THE PROPERTY OF RITE-HITE PRODUCTS CORPORATION SUBJECT MATTER HEREIN IS CONFIDENTIAL. DO NOT USE, REPRODUCE, COPY OR DISCLOSE EXCEPT WITH WRITTEN CONSENT OF RITE-HITE PRODUCTS CORPORATION.  © 2021 RITE-HITE® PRODUCTS CORPORATION	FINISH  UNLESS OTHERWISE SPECIFIED DIMENSIONS ARE IN INCHES.  TOLERANCES: X = ±.120 XX = ±.060 XXX = ±.030 ANGLE = ±.04°  THIRD ANGLE PROJECTION	MATERIAL  DRAWN BY: <b>N. BEYER</b> RESPONSIBLE ENGINEER: <b>N. BEYER</b> MANUFACTURING ENGINEER  REFERENCE: <b>0162024/0149331</b> ALL SHEETS ARE THE SAME REVISION STATUS. DO NOT SCALE DRAWING	TITLE  <b>RITE-HITE®</b> <b>PRODUCTS CORPORATION</b>  DWG PIT LOAD RHW41 (C-G) BPR BRKT 20,000LB ROLLOVER  DWG NO: <b>0172231</b> SCALE: 1:15 WEIGHT:	SIZE: <b>D</b> SHEET: <b>1 OF 3</b>
	© 2021 RITE-HITE® PRODUCTS CORPORATION		REV: <b>A</b>	

A

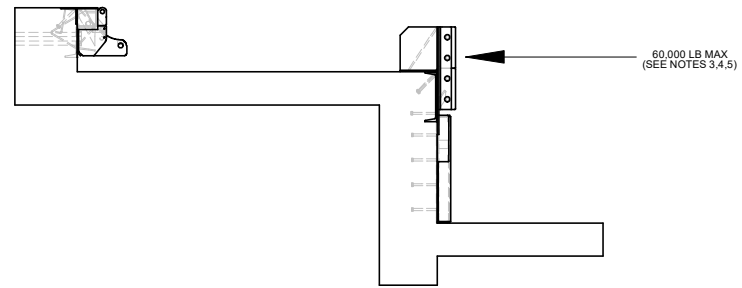
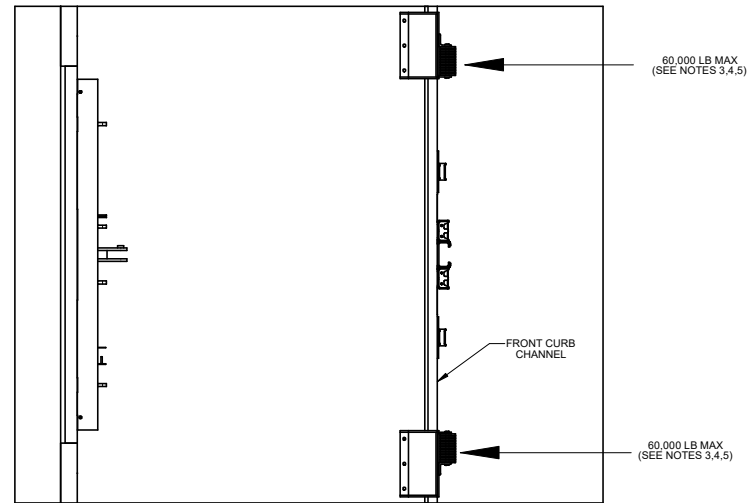
8 7 6 5 4 3 2 1

REVISION HISTORY			
REV	DATE	DESCRIPTION	APPROVED BY
A	10/06/2021	RELEASED	N.BEYER

### DESIGN LOADS FOR A 20,000LB ROLLOVER @ 4 MPH (END LOAD ON BELOW DOCK STOPS) 20,000LB ROLLOVER BASED ON ANSI 2000 TEST LOAD



### MAX BUMPER LOADS



**NOTES:**

- 3) LOADING APPLIED WHEN TRUCK/TRAILER BACKS INTO BUMPERS.
- 4) LOADING NOT FIXED IN ONE VERTICAL POSITION, BUT MAY HIT BUMPERS ANYWHERE ON VERTICAL FACE. LOADING ASSUMES 80,000lbf AT 2MPH.
- 5) LOAD SHOWN IS MAXIMUM TRUCK/TRAILER CAN APPLY TO THE DOCK BUMPERS. LOAD CAN BE APPLIED TO A SINGLE BUMPER OR SPREAD BETWEEN BOTH BUMPERS.

<b>CONFIDENTIAL</b>  THIS DOCUMENT IS THE PROPERTY OF RITE-HITE PRODUCTS CORPORATION SUBJECT MATTER HEREIN IS CONFIDENTIAL. DO NOT USE, REPRODUCE, COPY OR DISCLOSE EXCEPT WITH WRITTEN CONSENT OF RITE-HITE PRODUCTS CORPORATION.	FINISH UNLESS OTHERWISE SPECIFIED DIMENSIONS ARE IN INCHES.	MATERIAL DRAWN BY <b>N. BEYER</b>		
	TOLERANCES: X = ±.120 XX = ±.000 XXX = ±.030 ANGLE = ±.04°	RESPONSIBLE ENGINEER <b>N. BEYER</b>		TITLE <b>DWG PIT LOAD RHW41 (C-G) BPR BRKT 20,000LB ROLLOVER</b>
	THIRD ANGLE PROJECTION 	REFERENCE <b>0162024/0149331</b>	DWG NO <b>0172231</b>	REV <b>A</b>
	© 2021 RITE-HITE PRODUCTS CORPORATION	ALL SHEETS ARE THE SAME REVISION STATUS. DO NOT SCALE DRAWING.	SCALE 1:15	SHEET 2 OF 3

8 7 6 5 4 3 2 1

N.BEYER 12/09/2021

C

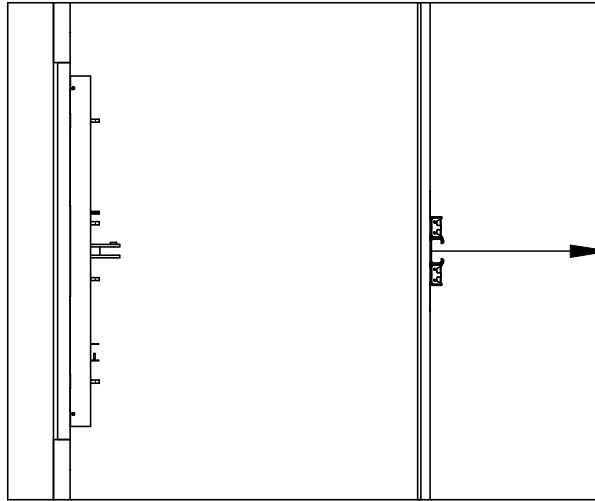
B

A

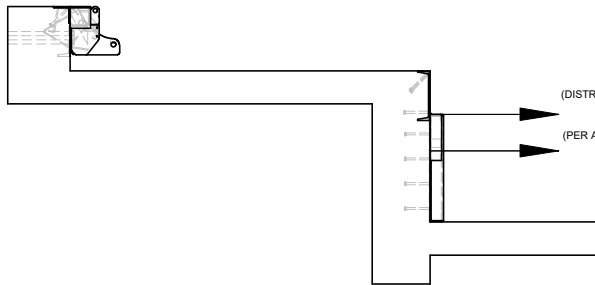
8 7 6 5 4 3 2 1

REVISION HISTORY				
REV	DATE	DESCRIPTION	ECN	APPROVED BY
A	10/06/2021	RELEASED	82409ML	N.BEYER

### MAX PULLOUT LOADS



32,000 LB PULLOUT  
(TOTAL PULLOUT)

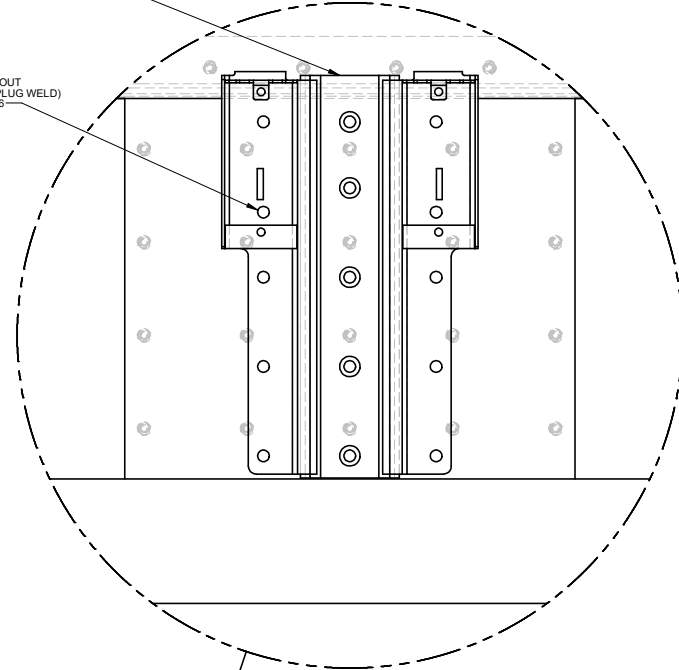


16,000 LB PULLOUT  
(DISTRIBUTED ALONG ENTIRE WELD)  
SEE NOTE 6

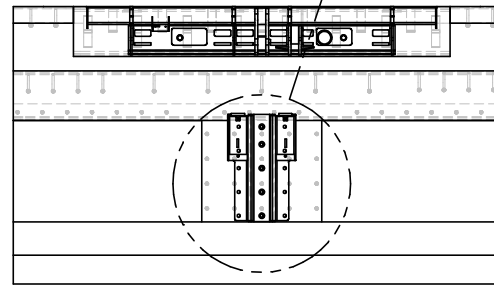
8,000 LB PULLOUT  
(PER ANCHOR HOLE PLUG WELD)  
SEE NOTE 6

16,000 LB PULLOUT  
(DISTRIBUTED ALONG ENTIRE WELD)  
SEE NOTE 6

8,000 LB PULLOUT  
(PER ANCHOR HOLE PLUG WELD)  
SEE NOTE 6



DETAIL A  
SCALE 1:4



**NOTES:**

6) ASSUMES PULLOUT LOADING CONCENTRATED ON 4 ANCHOR HOLE PLUG WELDS OR 2 ANCHOR HOLE PLUG WELDS AND FULL TOP WELD.

7) BUMPERS REMOVED FOR CLARITY

<b>CONFIDENTIAL</b> THIS DOCUMENT IS THE PROPERTY OF RITE-HITE PRODUCTS CORPORATION SUBJECT MATTER HEREIN IS CONFIDENTIAL. DO NOT USE, REPRODUCE, COPY OR DISCLOSE EXCEPT WITH WRITTEN CONSENT OF RITE-HITE PRODUCTS CORPORATION. © 2021 RITE-HITE® PRODUCTS CORPORATION	FINISH UNLESS OTHERWISE SPECIFIED, DIMENSIONS ARE IN INCHES. TOLERANCES: X = ±.120 XX = ±.060 XXX = ±.030 ANGLE = ±.04° THIRD ANGLE PROJECTION	MATERIAL DRAWN BY: <b>N. BEYER</b> RESPONSIBLE ENGINEER: <b>N. BEYER</b> MANUFACTURING ENGINEER:	<b>RITE-HITE®</b> <b>PRODUCTS CORPORATION</b> TITLE <b>DWG PIT LOAD RHV41 (C-G) BPR BRKT 20,000LB ROLLOVER</b>
	REFERENCE <b>0162024/0149331</b> ALL SHEETS ARE THE SAME REVISION STATUS. DO NOT SCALE DRAWING	SCALE: 1:15 WEIGHT	SIZE: <b>D</b> DWG NO: <b>0172231</b> SHEET: 3 OF 3

8 7 6 5 4 3 2 1

N.BEYER 12/09/2021

C

B

A