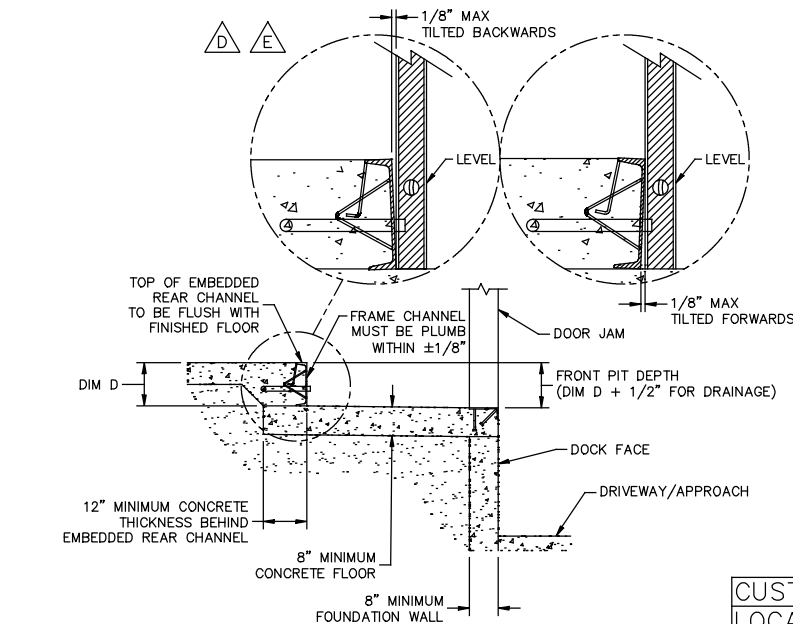


**NOTES:**

- PIT CONSTRUCTION MUST FOLLOW INSTRUCTIONS AND DETAILS OUTLINED IN THIS DOCUMENT. RITE-HITE CORP. WILL NOT BE RESPONSIBLE FOR EQUIPMENT FAILURE DUE TO IMPROPER PIT CONSTRUCTION.
- CONCRETE MUST BE 3,000 PSI MINIMUM, MUST BE WELL VIBRATED AND FREE OF VOIDS.
- 8" RECOMMENDED MINIMUM CONCRETE THICKNESS FOR PIT FLOOR, DOCK FACE, BUILDING WALL, AND FOUNDATION. 12" MINIMUM CONCRETE THICKNESS BEHIND REAR PIT STEEL.
- FOUNDATION AND/OR BUILDING WALL MUST BE DESIGNED TO WITHSTAND THE IMPACT OF A TRACTOR/TRAILER.
- ALL PIT STEEL JOINTS TO BE WELDED SECURELY.
- EMBEDDED REAR CHANNEL MUST BE ONE CONTINUOUS PIECE OF STEEL. NO SEAMS PERMISSIBLE.
- ALL PIT STEEL TO BE FURNISHED BY OTHERS, UNLESS OTHERWISE SPECIFIED.
- ALL DIMENSIONS  $\pm 1/8"$  UNLESS OTHERWISE SPECIFIED.
- CONDUIT AND ELECTRICAL WIRING BY OTHERS.
- BUILDING ARCHITECT RESPONSIBLE FOR MEETING LOCAL CODES REGARDING STEP-DOWN REGULATIONS.
- REBAR MUST BE TIED ONTO EMBEDDED REAR CHANNEL.
- DOOR JAM THICKNESS DEFINED AS DISTANCE FROM DOCK FACE TO OUTSIDE SURFACE OF OVERHEAD DOOR.

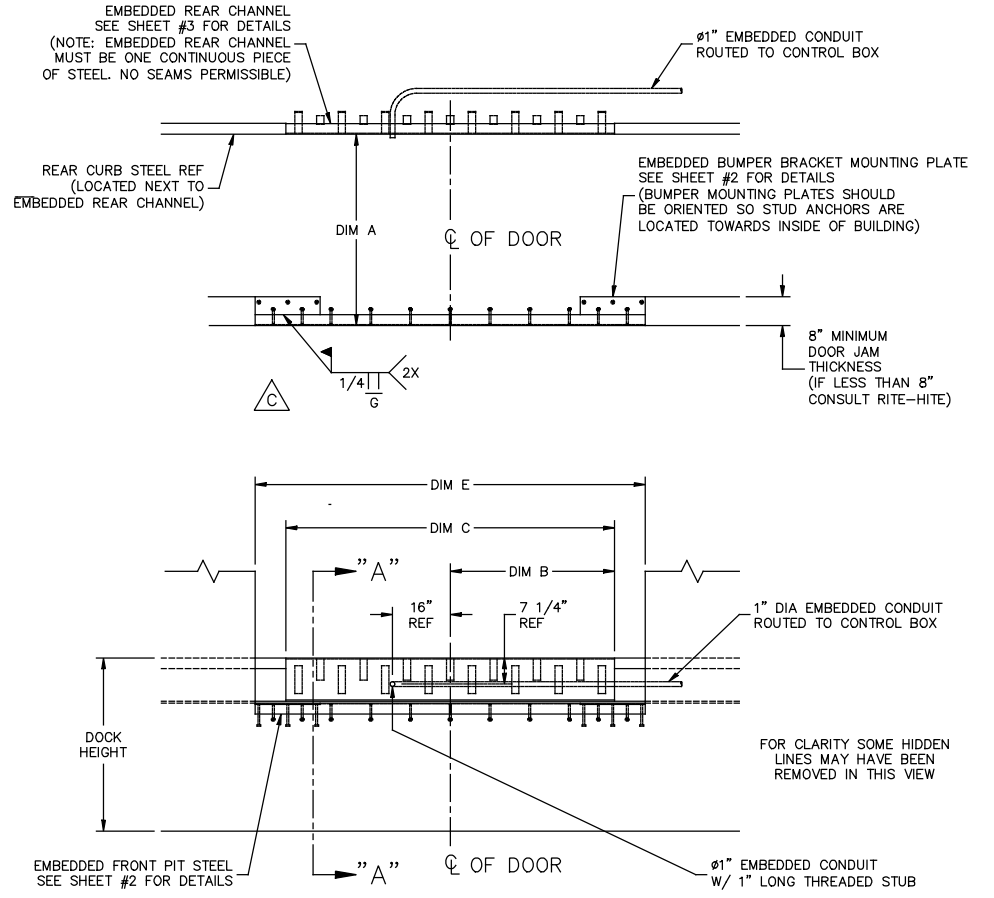
NOMINAL SIZE	PIT LENGTH DIM A	REAR CURB STEEL LOCATION DIM B	EMB. REAR CHAN. WIDTH DIM C	REAR PIT DEPTH DIM D	DOOR OPENING WIDTH (FRONT EMBEDDED ANGLE LENGTH) DIM E
5L X 6W	53"	40"	80"	12" *	
5L X 6.5W	53"	43"	86"	12" *	
5L X 7W	53"	45 1/2"	91"	12" *	

\* STANDARD PIT DEPTH = 12" (10" OPTIONAL) FOR PIT DEPTHS OTHER THAN 10" OR 12" CONSULT RITE-HITE.



**SECTION "A-A"**  
FOR CLARITY SOME HIDDEN LINES MAY HAVE BEEN REMOVED IN THIS VIEW

REVISION HISTORY				
REV	DATE	DESCRIPTION	ECN	APPROVED BY
A	3/8/12	RELEASED	20120157	M. SVEUM
B	04/26/2012	FIX DIMS OF "L", "V" BARS	20120263	T. LATHAM
C	11/01/2012	ADDED WELD SYMBOL	20120731	M. SVEUM
D	12/18/2015	ADDED PLUMB CHANNEL	49926ML	N. BEYER
E	05/04/2017	REVERSED REAR CHANNEL VIEWS	20170217	N. BEYER

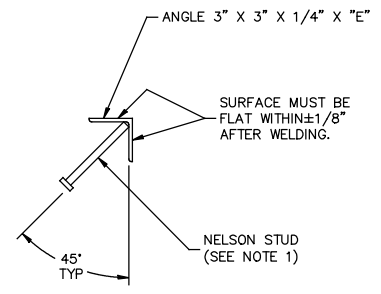
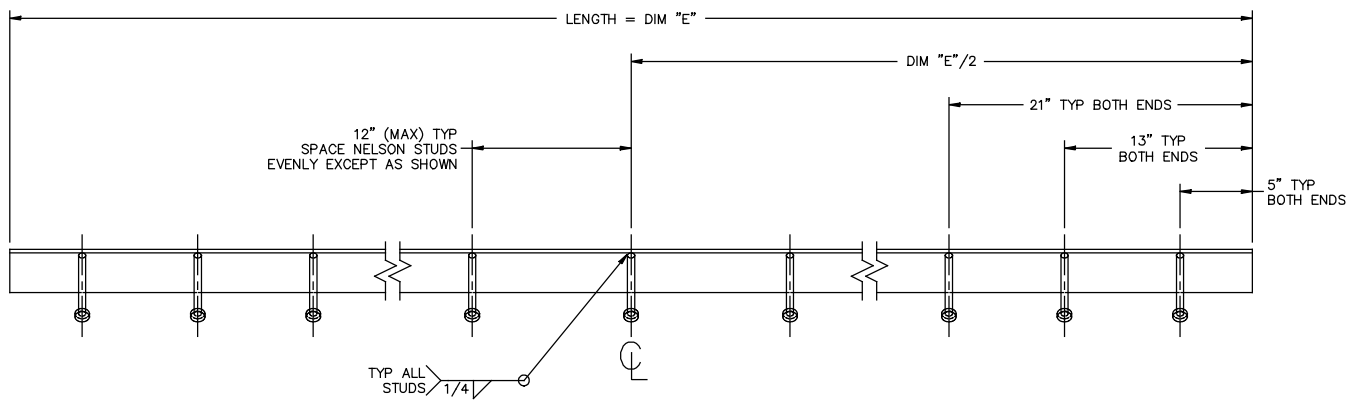


<b>CUSTOMER:</b>		TOLERANCE TO BE $\pm 1/8$ UNLESS OTHERWISE SPECIFIED  ©2012 RITE-HITE PRODUCTS CORPORATION	UNLESS OTHERWISE SPECIFIED DIMENSIONS ARE IN INCHES  TOLERANCES: J .015 .XX .000 .XXX .000 .XXX .000 .XXX .000	MATERIAL / PART NUMBER			
<b>LOCATION:</b>				DRAWN BY J. KISH RESPONSIBLE ENGINEER M. SVEUM	RITE-HITE® PRODUCTS CORPORATION		
<b>JOB #:</b>				TITLE RHV-4100 CONTINUOUS PIT DETAIL 5'L LEVELERS	SIZE D	DWG NO 0139847	REV E
<b>QUANTITY:</b>				REFERENCE ALL SHEETS ARE THE SAME REVISION STATUS DO NOT SCALE DRAWING	SCALE 1=16	WEIGHT	SHEET 1 OF 3

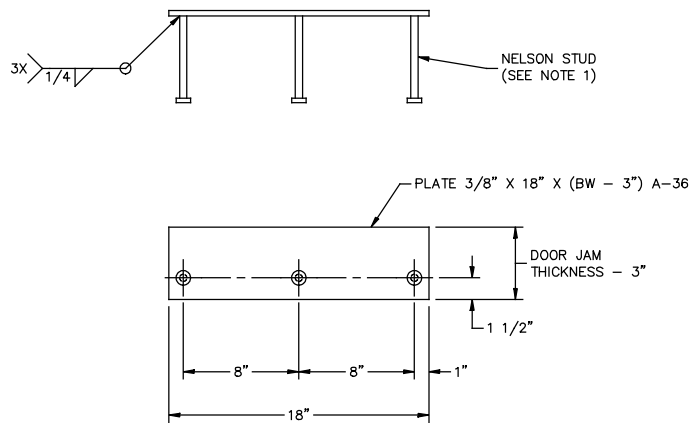
8 7 6 5 4 3 2 1

REVISION HISTORY				
REV	DATE	DESCRIPTION	ECN	APPROVED BY
A	3/8/12	RELEASED	20120157	M. SVEUM
B	04/26/2012	FIX DIMS OF "L", "V" BARS	20120263	T. LATHAM
C	11/01/2012	ADDED WELD SYMBOL	20120731	M. SVEUM
D	12/18/2015	NO CHG THIS SHT	49926ML	N. BEYER

**EMBEDDED FRONT PIT STEEL**  
1 REQUIRED PER POSITION



**EMBEDDED BUMPER SUPPORT PLATE**  
2 REQUIRED PER POSITION



**NOTES:**

1. NELSON STUD (CONCRETE ANCHOR)  $\phi 1/2 \times 6L$ . IF CONCRETE ANCHORS (NELSON STUDS) ARE TO BE STUD WELDED, PIT STEEL MUST BE SAND BLASTED. OTHERWISE CONCRETE ANCHORS MUST BE WELDED BY HAND.
2. SEE SHEET #1 FOR DIM "E".
3. AT MINIMUM, PAINT ALL EXPOSED SURFACES ONE COAT RITE-HITE GREY.

CUSTOMER:  
LOCATION:  
JOB #:  
QUANTITY:

TOLERANCE TO BE  $\pm 1/8$  UNLESS OTHERWISE SPECIFIED

UNLESS OTHERWISE SPECIFIED DIMENSIONS ARE IN INCHES  
TOLERANCES:  
X .130  
X .200  
X .250  
X .300  
X .350  
X .400  
X .450  
X .500  
X .550  
X .600  
X .650  
X .700  
X .750  
X .800  
X .850  
X .900  
X .950  
X 1.000  
X 1.050  
X 1.100  
X 1.150  
X 1.200  
X 1.250  
X 1.300  
X 1.350  
X 1.400  
X 1.450  
X 1.500  
X 1.550  
X 1.600  
X 1.650  
X 1.700  
X 1.750  
X 1.800  
X 1.850  
X 1.900  
X 1.950  
X 2.000  
X 2.050  
X 2.100  
X 2.150  
X 2.200  
X 2.250  
X 2.300  
X 2.350  
X 2.400  
X 2.450  
X 2.500  
X 2.550  
X 2.600  
X 2.650  
X 2.700  
X 2.750  
X 2.800  
X 2.850  
X 2.900  
X 2.950  
X 3.000  
X 3.050  
X 3.100  
X 3.150  
X 3.200  
X 3.250  
X 3.300  
X 3.350  
X 3.400  
X 3.450  
X 3.500  
X 3.550  
X 3.600  
X 3.650  
X 3.700  
X 3.750  
X 3.800  
X 3.850  
X 3.900  
X 3.950  
X 4.000  
X 4.050  
X 4.100  
X 4.150  
X 4.200  
X 4.250  
X 4.300  
X 4.350  
X 4.400  
X 4.450  
X 4.500  
X 4.550  
X 4.600  
X 4.650  
X 4.700  
X 4.750  
X 4.800  
X 4.850  
X 4.900  
X 4.950  
X 5.000  
X 5.050  
X 5.100  
X 5.150  
X 5.200  
X 5.250  
X 5.300  
X 5.350  
X 5.400  
X 5.450  
X 5.500  
X 5.550  
X 5.600  
X 5.650  
X 5.700  
X 5.750  
X 5.800  
X 5.850  
X 5.900  
X 5.950  
X 6.000  
X 6.050  
X 6.100  
X 6.150  
X 6.200  
X 6.250  
X 6.300  
X 6.350  
X 6.400  
X 6.450  
X 6.500  
X 6.550  
X 6.600  
X 6.650  
X 6.700  
X 6.750  
X 6.800  
X 6.850  
X 6.900  
X 6.950  
X 7.000  
X 7.050  
X 7.100  
X 7.150  
X 7.200  
X 7.250  
X 7.300  
X 7.350  
X 7.400  
X 7.450  
X 7.500  
X 7.550  
X 7.600  
X 7.650  
X 7.700  
X 7.750  
X 7.800  
X 7.850  
X 7.900  
X 7.950  
X 8.000  
X 8.050  
X 8.100  
X 8.150  
X 8.200  
X 8.250  
X 8.300  
X 8.350  
X 8.400  
X 8.450  
X 8.500  
X 8.550  
X 8.600  
X 8.650  
X 8.700  
X 8.750  
X 8.800  
X 8.850  
X 8.900  
X 8.950  
X 9.000  
X 9.050  
X 9.100  
X 9.150  
X 9.200  
X 9.250  
X 9.300  
X 9.350  
X 9.400  
X 9.450  
X 9.500  
X 9.550  
X 9.600  
X 9.650  
X 9.700  
X 9.750  
X 9.800  
X 9.850  
X 9.900  
X 9.950  
X 10.000  
X 10.050  
X 10.100  
X 10.150  
X 10.200  
X 10.250  
X 10.300  
X 10.350  
X 10.400  
X 10.450  
X 10.500  
X 10.550  
X 10.600  
X 10.650  
X 10.700  
X 10.750  
X 10.800  
X 10.850  
X 10.900  
X 10.950  
X 11.000  
X 11.050  
X 11.100  
X 11.150  
X 11.200  
X 11.250  
X 11.300  
X 11.350  
X 11.400  
X 11.450  
X 11.500  
X 11.550  
X 11.600  
X 11.650  
X 11.700  
X 11.750  
X 11.800  
X 11.850  
X 11.900  
X 11.950  
X 12.000  
X 12.050  
X 12.100  
X 12.150  
X 12.200  
X 12.250  
X 12.300  
X 12.350  
X 12.400  
X 12.450  
X 12.500  
X 12.550  
X 12.600  
X 12.650  
X 12.700  
X 12.750  
X 12.800  
X 12.850  
X 12.900  
X 12.950  
X 13.000  
X 13.050  
X 13.100  
X 13.150  
X 13.200  
X 13.250  
X 13.300  
X 13.350  
X 13.400  
X 13.450  
X 13.500  
X 13.550  
X 13.600  
X 13.650  
X 13.700  
X 13.750  
X 13.800  
X 13.850  
X 13.900  
X 13.950  
X 14.000  
X 14.050  
X 14.100  
X 14.150  
X 14.200  
X 14.250  
X 14.300  
X 14.350  
X 14.400  
X 14.450  
X 14.500  
X 14.550  
X 14.600  
X 14.650  
X 14.700  
X 14.750  
X 14.800  
X 14.850  
X 14.900  
X 14.950  
X 15.000  
X 15.050  
X 15.100  
X 15.150  
X 15.200  
X 15.250  
X 15.300  
X 15.350  
X 15.400  
X 15.450  
X 15.500  
X 15.550  
X 15.600  
X 15.650  
X 15.700  
X 15.750  
X 15.800  
X 15.850  
X 15.900  
X 15.950  
X 16.000  
X 16.050  
X 16.100  
X 16.150  
X 16.200  
X 16.250  
X 16.300  
X 16.350  
X 16.400  
X 16.450  
X 16.500  
X 16.550  
X 16.600  
X 16.650  
X 16.700  
X 16.750  
X 16.800  
X 16.850  
X 16.900  
X 16.950  
X 17.000  
X 17.050  
X 17.100  
X 17.150  
X 17.200  
X 17.250  
X 17.300  
X 17.350  
X 17.400  
X 17.450  
X 17.500  
X 17.550  
X 17.600  
X 17.650  
X 17.700  
X 17.750  
X 17.800  
X 17.850  
X 17.900  
X 17.950  
X 18.000  
X 18.050  
X 18.100  
X 18.150  
X 18.200  
X 18.250  
X 18.300  
X 18.350  
X 18.400  
X 18.450  
X 18.500  
X 18.550  
X 18.600  
X 18.650  
X 18.700  
X 18.750  
X 18.800  
X 18.850  
X 18.900  
X 18.950  
X 19.000  
X 19.050  
X 19.100  
X 19.150  
X 19.200  
X 19.250  
X 19.300  
X 19.350  
X 19.400  
X 19.450  
X 19.500  
X 19.550  
X 19.600  
X 19.650  
X 19.700  
X 19.750  
X 19.800  
X 19.850  
X 19.900  
X 19.950  
X 20.000  
X 20.050  
X 20.100  
X 20.150  
X 20.200  
X 20.250  
X 20.300  
X 20.350  
X 20.400  
X 20.450  
X 20.500  
X 20.550  
X 20.600  
X 20.650  
X 20.700  
X 20.750  
X 20.800  
X 20.850  
X 20.900  
X 20.950  
X 21.000  
X 21.050  
X 21.100  
X 21.150  
X 21.200  
X 21.250  
X 21.300  
X 21.350  
X 21.400  
X 21.450  
X 21.500  
X 21.550  
X 21.600  
X 21.650  
X 21.700  
X 21.750  
X 21.800  
X 21.850  
X 21.900  
X 21.950  
X 22.000  
X 22.050  
X 22.100  
X 22.150  
X 22.200  
X 22.250  
X 22.300  
X 22.350  
X 22.400  
X 22.450  
X 22.500  
X 22.550  
X 22.600  
X 22.650  
X 22.700  
X 22.750  
X 22.800  
X 22.850  
X 22.900  
X 22.950  
X 23.000  
X 23.050  
X 23.100  
X 23.150  
X 23.200  
X 23.250  
X 23.300  
X 23.350  
X 23.400  
X 23.450  
X 23.500  
X 23.550  
X 23.600  
X 23.650  
X 23.700  
X 23.750  
X 23.800  
X 23.850  
X 23.900  
X 23.950  
X 24.000  
X 24.050  
X 24.100  
X 24.150  
X 24.200  
X 24.250  
X 24.300  
X 24.350  
X 24.400  
X 24.450  
X 24.500  
X 24.550  
X 24.600  
X 24.650  
X 24.700  
X 24.750  
X 24.800  
X 24.850  
X 24.900  
X 24.950  
X 25.000  
X 25.050  
X 25.100  
X 25.150  
X 25.200  
X 25.250  
X 25.300  
X 25.350  
X 25.400  
X 25.450  
X 25.500  
X 25.550  
X 25.600  
X 25.650  
X 25.700  
X 25.750  
X 25.800  
X 25.850  
X 25.900  
X 25.950  
X 26.000  
X 26.050  
X 26.100  
X 26.150  
X 26.200  
X 26.250  
X 26.300  
X 26.350  
X 26.400  
X 26.450  
X 26.500  
X 26.550  
X 26.600  
X 26.650  
X 26.700  
X 26.750  
X 26.800  
X 26.850  
X 26.900  
X 26.950  
X 27.000  
X 27.050  
X 27.100  
X 27.150  
X 27.200  
X 27.250  
X 27.300  
X 27.350  
X 27.400  
X 27.450  
X 27.500  
X 27.550  
X 27.600  
X 27.650  
X 27.700  
X 27.750  
X 27.800  
X 27.850  
X 27.900  
X 27.950  
X 28.000  
X 28.050  
X 28.100  
X 28.150  
X 28.200  
X 28.250  
X 28.300  
X 28.350  
X 28.400  
X 28.450  
X 28.500  
X 28.550  
X 28.600  
X 28.650  
X 28.700  
X 28.750  
X 28.800  
X 28.850  
X 28.900  
X 28.950  
X 29.000  
X 29.050  
X 29.100  
X 29.150  
X 29.200  
X 29.250  
X 29.300  
X 29.350  
X 29.400  
X 29.450  
X 29.500  
X 29.550  
X 29.600  
X 29.650  
X 29.700  
X 29.750  
X 29.800  
X 29.850  
X 29.900  
X 29.950  
X 30.000  
X 30.050  
X 30.100  
X 30.150  
X 30.200  
X 30.250  
X 30.300  
X 30.350  
X 30.400  
X 30.450  
X 30.500  
X 30.550  
X 30.600  
X 30.650  
X 30.700  
X 30.750  
X 30.800  
X 30.850  
X 30.900  
X 30.950  
X 31.000  
X 31.050  
X 31.100  
X 31.150  
X 31.200  
X 31.250  
X 31.300  
X 31.350  
X 31.400  
X 31.450  
X 31.500  
X 31.550  
X 31.600  
X 31.650  
X 31.700  
X 31.750  
X 31.800  
X 31.850  
X 31.900  
X 31.950  
X 32.000  
X 32.050  
X 32.100  
X 32.150  
X 32.200  
X 32.250  
X 32.300  
X 32.350  
X 32.400  
X 32.450  
X 32.500  
X 32.550  
X 32.600  
X 32.650  
X 32.700  
X 32.750  
X 32.800  
X 32.850  
X 32.900  
X 32.950  
X 33.000  
X 33.050  
X 33.100  
X 33.150  
X 33.200  
X 33.250  
X 33.300  
X 33.350  
X 33.400  
X 33.450  
X 33.500  
X 33.550  
X 33.600  
X 33.650  
X 33.700  
X 33.750  
X 33.800  
X 33.850  
X 33.900  
X 33.950  
X 34.000  
X 34.050  
X 34.100  
X 34.150  
X 34.200  
X 34.250  
X 34.300  
X 34.350  
X 34.400  
X 34.450  
X 34.500  
X 34.550  
X 34.600  
X 34.650  
X 34.700  
X 34.750  
X 34.800  
X 34.850  
X 34.900  
X 34.950  
X 35.000  
X 35.050  
X 35.100  
X 35.150  
X 35.200  
X 35.250  
X 35.300  
X 35.350  
X 35.400  
X 35.450  
X 35.500  
X 35.550  
X 35.600  
X 35.650  
X 35.700  
X 35.750  
X 35.800  
X 35.850  
X 35.900  
X 35.950  
X 36.000  
X 36.050  
X 36.100  
X 36.150  
X 36.200  
X 36.250  
X 36.300  
X 36.350  
X 36.400  
X 36.450  
X 36.500  
X 36.550  
X 36.600  
X 36.650  
X 36.700  
X 36.750  
X 36.800  
X 36.850  
X 36.900  
X 36.950  
X 37.000  
X 37.050  
X 37.100  
X 37.150  
X 37.200  
X 37.250  
X 37.300  
X 37.350  
X 37.400  
X 37.450  
X 37.500  
X 37.550  
X 37.600  
X 37.650  
X 37.700  
X 37.750  
X 37.800  
X 37.850  
X 37.900  
X 37.950  
X 38.000  
X 38.050  
X 38.100  
X 38.150  
X 38.200  
X 38.250  
X 38.300  
X 38.350  
X 38.400  
X 38.450  
X 38.500  
X 38.550  
X 38.600  
X 38.650  
X 38.700  
X 38.750  
X 38.800  
X 38.850  
X 38.900  
X 38.950  
X 39.000  
X 39.050  
X 39.100  
X 39.150  
X 39.200  
X 39.250  
X 39.300  
X 39.350  
X 39.400  
X 39.450  
X 39.500  
X 39.550  
X 39.600  
X 39.650  
X 39.700  
X 39.750  
X 39.800  
X 39.850  
X 39.900  
X 39.950  
X 40.000  
X 40.050  
X 40.100  
X 40.150  
X 40.200  
X 40.250  
X 40.300  
X 40.350  
X 40.400  
X 40.450  
X 40.500  
X 40.550  
X 40.600  
X 40.650  
X 40.700  
X 40.750  
X 40.800  
X 40.850  
X 40.900  
X 40.950  
X 41.000  
X 41.050  
X 41.100  
X 41.150  
X 41.200  
X 41.250  
X 41.300  
X 41.350  
X 41.400  
X 41.450  
X 41.500  
X 41.550  
X 41.600  
X 41.650  
X 41.700  
X 41.750  
X 41.800  
X 41.850  
X 41.900  
X 41.950  
X 42.000  
X 42.050  
X 42.100  
X 42.150  
X 42.200  
X 42.250  
X 42.300  
X 42.350  
X 42.400  
X 42.450  
X 42.500  
X 42.550  
X 42.600  
X 42.650  
X 42.700  
X 42.750  
X 42.800  
X 42.850  
X 42.900  
X 42.950  
X 43.000  
X 43.050  
X 43.100  
X 43.150  
X 43.200  
X 43.250  
X 43.300  
X 43.350  
X 43.400  
X 43.450  
X 43.500  
X 43.550  
X 43.600  
X 43.650  
X 43.700  
X 43.750  
X 43.800  
X 43.850  
X 43.900  
X 43.950  
X 44.000  
X 44.050  
X 44.100  
X 44.150  
X 44.200  
X 44.250  
X 44.300  
X 44.350  
X 44.400  
X 44.450  
X 44.500  
X 44.550  
X 44.600  
X 44.650  
X 44.700  
X 44.750  
X 44.800  
X 44.850  
X 44.900  
X 44.950  
X 45.000  
X 45.050  
X 45.100  
X 45.150  
X 45.200  
X 45.250  
X 45.300  
X 45.350  
X 45.400  
X 45.450  
X 45.500  
X 45.550  
X 45.600  
X 45.650  
X 45.700  
X 45.750  
X 45.800  
X 45.850  
X 45.900  
X 45.950  
X 46.000  
X 46.050  
X 46.100  
X 46.150  
X 46.200  
X 46.250  
X 46.300  
X 46.350  
X 46.400  
X 46.450  
X 46.500  
X 46.550  
X 46.600  
X 46.650  
X 46.700  
X 46.750  
X 46.800  
X 46.850  
X 46.900  
X 46.950  
X 47.000  
X 47.050  
X 47.100  
X 47.150  
X 47.200  
X 47.250  
X 47.300  
X 47.350  
X 47.400  
X 47.450  
X 47.500  
X 47.550  
X 47.600  
X 47.650  
X 47.700  
X 47.750  
X 47.800  
X 47.850  
X 47.900  
X 47.950  
X 48.000  
X 48.050  
X 48.100  
X 48.150  
X 48.200  
X 48.250  
X 48.300  
X 48.350  
X 48.400  
X 48.450  
X 48.500  
X 48.550  
X 48.600  
X 48.650  
X 48.700  
X 48.750  
X 48.800  
X 48.850  
X 48.900  
X 48.950  
X 49.000  
X 49.050  
X 49.100  
X 49.150  
X 49.200  
X 49.250  
X 49.300  
X 49.350  
X 49.400  
X 49.450  
X 49.500  
X 49.550  
X 49.600  
X 49.650  
X 49.700  
X 49.750  
X 49.800  
X 49.850  
X 49.900  
X 49.950  
X 50.000  
X 50.050  
X 50.100  
X 50.150  
X 50.200  
X 50.250  
X 50.300  
X 50.350  
X 50.400  
X 50.450  
X 50.500  
X 50.550  
X 50.600  
X 50.650  
X 50.700  
X 50.750  
X 50.800  
X 50.850  
X 50.900  
X 50.950  
X 51.000  
X 51.050  
X 51.100  
X 51.150  
X 51.200  
X 51.250  
X 51.300  
X 51.350  
X 51.400  
X 51.450  
X 51.500  
X 51.550  
X 51.600  
X 51.650  
X 51.700  
X 51.750  
X 51.800  
X 51.850  
X 51.900  
X 51.950  
X 52.000  
X 52.050  
X 52.100  
X 52.150  
X 52.200  
X 52.250  
X 52.300  
X 52.350  
X 52.400  
X 52.450  
X 52.500  
X 52.550  
X 52.600  
X 52.650  
X 52.700  
X 52.750  
X 52.800  
X 52.850  
X 52.900  
X 52.950  
X 53.000  
X 53.050  
X 53.100  
X 53.150  
X 53.200  
X 53.250  
X 53.300  
X 53.350  
X 53.400  
X 53.450  
X 53.500  
X 53.550  
X 53.600  
X 53.650  
X 53.700  
X 53.750  
X 53.800  
X 53.850  
X 53.900  
X 53.950  
X 54.000  
X 54.050  
X 54.100  
X 54.150  
X 54.200  
X 54.250  
X 54.300  
X 54.350  
X 54.400  
X 54.450  
X 54.500  
X 54.550  
X 54.600  
X 54.650  
X 54.700  
X 54.750  
X 54.800  
X 54.850  
X 54.900  
X 54.950  
X 55.000  
X 55.050  
X 55.100  
X 55.150  
X 55.200  
X 55.250  
X 55.300  
X 55.350  
X 55.400  
X 55.450  
X 55.500  
X 55.550  
X 55.600  
X 55.650  
X 55.700  
X 55.750  
X 55.800  
X 55.850  
X 55.900  
X 55.950  
X 56.000  
X 56.050  
X 56.100  
X 56.150  
X 56.200  
X 56.250  
X 56.300  
X 56.350  
X 56.400  
X 56.450  
X 56.500  
X 56.550  
X 56.600  
X 56.650  
X 56.700  
X 56.750  
X 56.800  
X 56.850  
X 56.900  
X 56.950  
X 57.000  
X 57.050  
X 57.100  
X 57.150  
X 57.200  
X 57.250  
X 57.300  
X 57.350  
X 57.400  
X 57.450  
X 57.500  
X 57.550  
X 57.600  
X

4

3

2

1

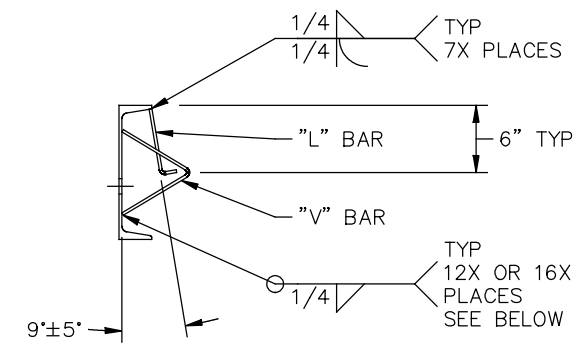
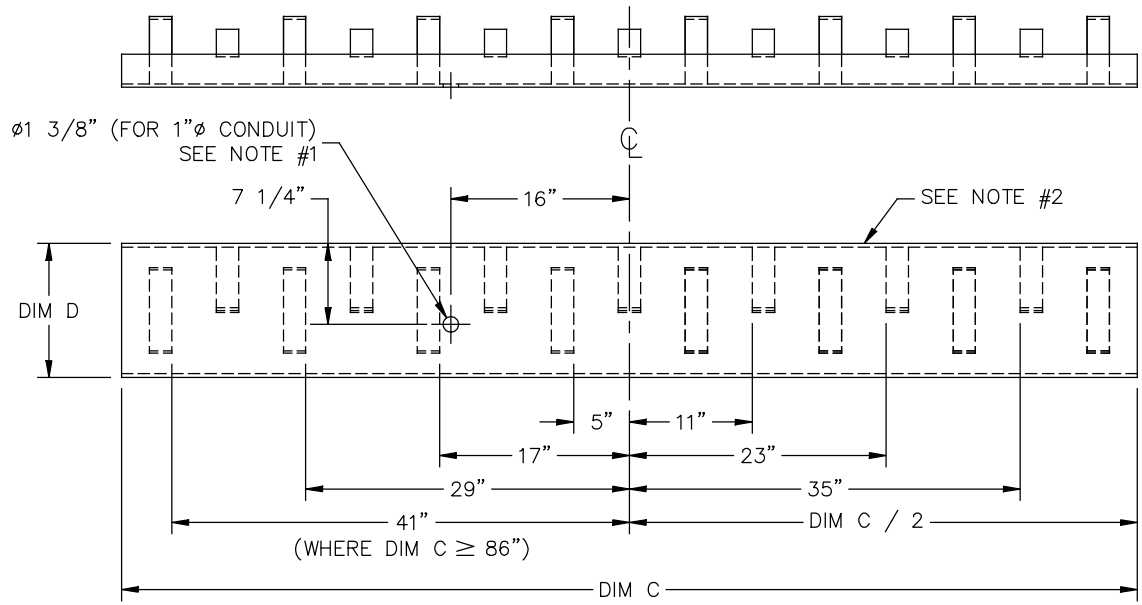
### EMBEDDED REAR CHANNEL

1 REQUIRED PER POSITION



REVISION HISTORY				
REV	DATE	DESCRIPTION	ECN	APPROVED BY
A	3/8/12	RELEASED	20120157	M. SVEUM
B	04/26/2012	FIX DIMS OF "L", "V" BARS	20120263	T. LATHAM
C	11/10/2012	ADDED WELD SYMBOL	20120731	M. SVEUM
D	12/18/2015	NO CHG THIS SHT	49926ML	N. BEYER

**NOTE:** EMBEDDED REAR CHANNEL CONSTRUCTION IS CRITICAL COMPLIANCE TO THIS FABRICATION IS MANDATORY



### EMBEDDED REAR CHANNEL DIMENSIONS

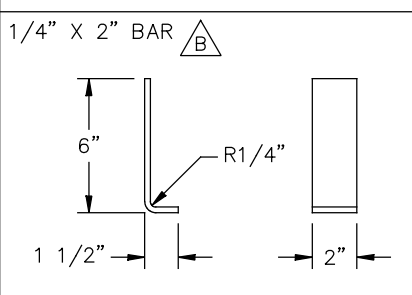


DIMENSION	DESCRIPTION	EQUATION	VALUE
DIM C =	REAR PIT WIDTH (CHANNEL LENGTH)	6'W LEVELER = 80" 6.5'W LEVELER = 86" 7'W LEVELER = 91"	
DIM D =	REAR PIT DEPTH		

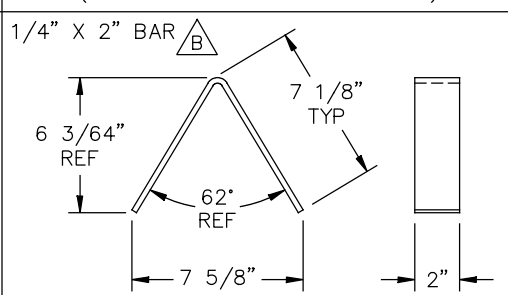
### NOTES:

- 1"  $\phi$  CONDUIT REQUIRED FOR LEVELERS WITH DECK MOUNTED POWER UNITS. (FOR REMOTE POWER INSTALLATION, CONTACT RITE-HITE FOR ASSISTANCE.)
- STRUCTURAL CHANNEL:  
C10 X 15.3LB/FT (FOR 10" DEEP PIT, DIM D = 10")  
C12 X 20.7LB/FT (FOR 12" DEEP PIT, DIM D = 12")
- DIMENSIONS FOR "L" & "V" BARS SYMMETRICAL ABOUT CENTERLINE.
- AT MINIMUM, PAINT ALL EXPOSED SURFACES ONE COAT RITE-HITE GREY.

### "L" BAR DETAILS (7 REQUIRED)



### "V" BAR DETAILS (8 REQUIRED FOR 6.5'W & 7'W LEVELER) (6 REQUIRED FOR 6'W LEVELERS)



CUSTOMER: \_\_\_\_\_  
 LOCATION: \_\_\_\_\_  
 JOB #: \_\_\_\_\_  
 QUANTITY: \_\_\_\_\_

TOLERANCE TO BE  $\pm 1/8$  UNLESS OTHERWISE SPECIFIED

UNLESS OTHERWISE SPECIFIED DIMENSIONS ARE IN INCHES TOLERANCES

.X	$\pm .120$
.XX	$\pm .060$
.XXX	$\pm .030$
ANGLES	$\pm 2.0^\circ$

MATERIAL / PART NUMBER: A-36

DRAWN BY: J. KISH  
 RESPONSIBLE ENGINEER: M. SVEUM

**RITE-HITE® PRODUCTS CORPORATION**

TITLE: RHV-4100 CONTINUOUS PIT DETAIL  
 5'L LEVELERS  
 EMBEDDED REAR CHANNEL

ALL SHEETS ARE THE SAME REVISION STATUS

DO NOT SCALE DRAWING

SCALE: 1=8 WEIGHT: SHEET 3 OF 3

DWG NO: 0139847

REV: D

4

3

2

1