



**10 YEARS HOME WARRANTY
ON WORKMANSHIP**

ANGELIQUE

Exteriors

(3-Bedroom)

- James Hardy Axon
- James Hardy Linea
- James Hardy Stria
- James Hardy Oblique

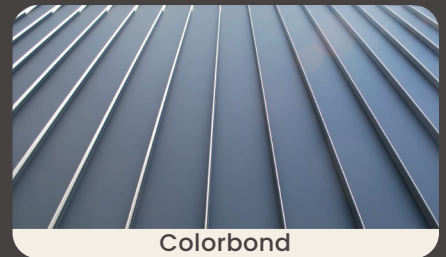
Our Inclusions

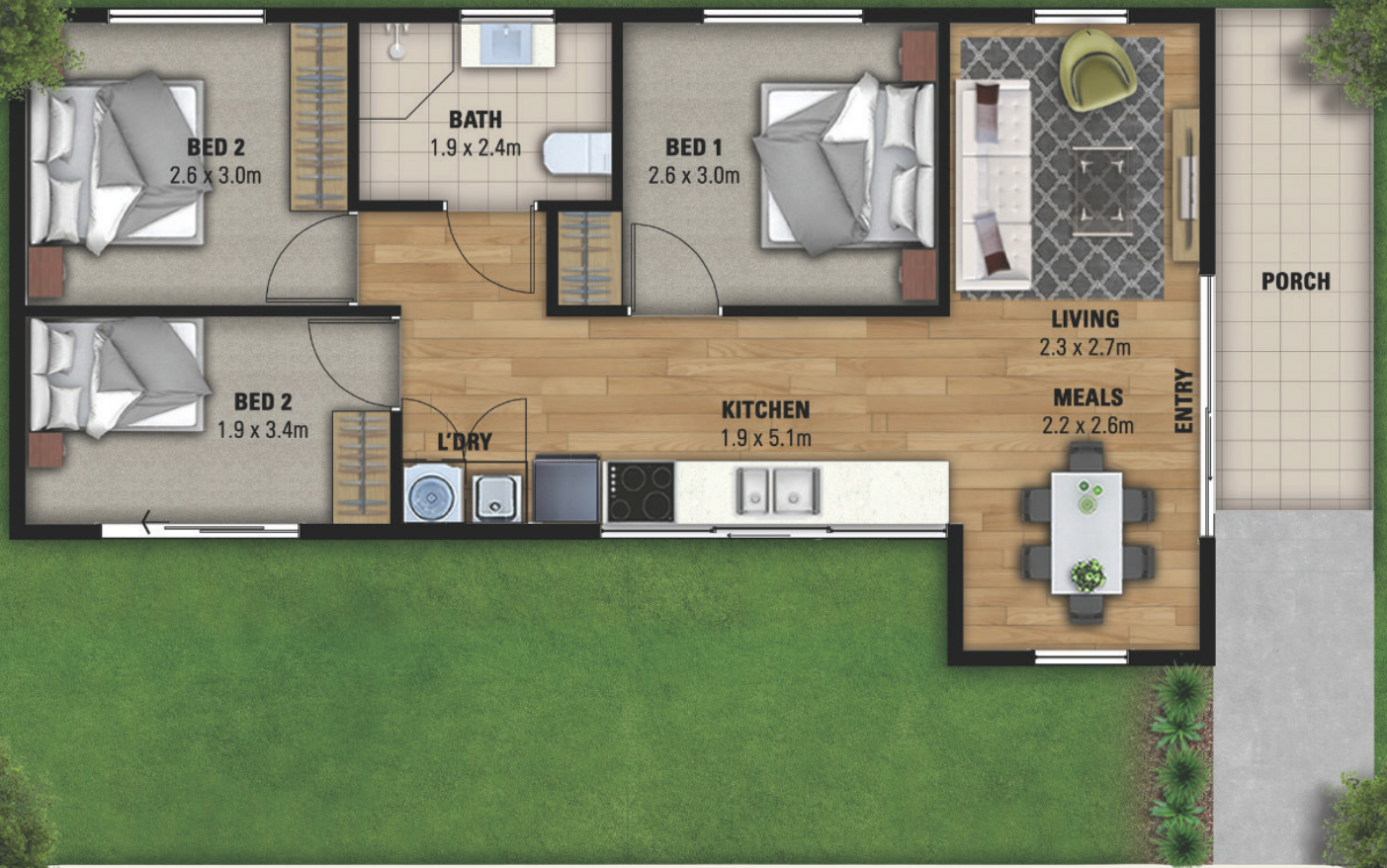
**Compare our inclusions
that cant be beaten**

- 2700 Ceilings
- Floor to ceiling tiles in wet areas
- Designer Kitchen
- Hybrid Timber Flooring
- Double Glazed Windows
- 7 Star energy rating
- Breathable wrapping
- Stone Benchtops

Seperate electrical and water meter options available

Our External Facade Options





Why build with us

1. **Built On-Site, Built to Last**
No prefab shortcuts — real homes built by real trades.
2. **Smarter 60sqm Living**
Designed to feel bigger, brighter, and more liveable.
3. **Total Price Transparency**
Clear costs upfront — no surprises, ever.
4. **Built for Australian Conditions**
Engineered for durability, comfort, and energy efficiency.
5. **End-to-End, Stress-Free Build**
We handle everything from design to handover.
6. **See It Before You Build**
Walk through our display and experience the difference.

