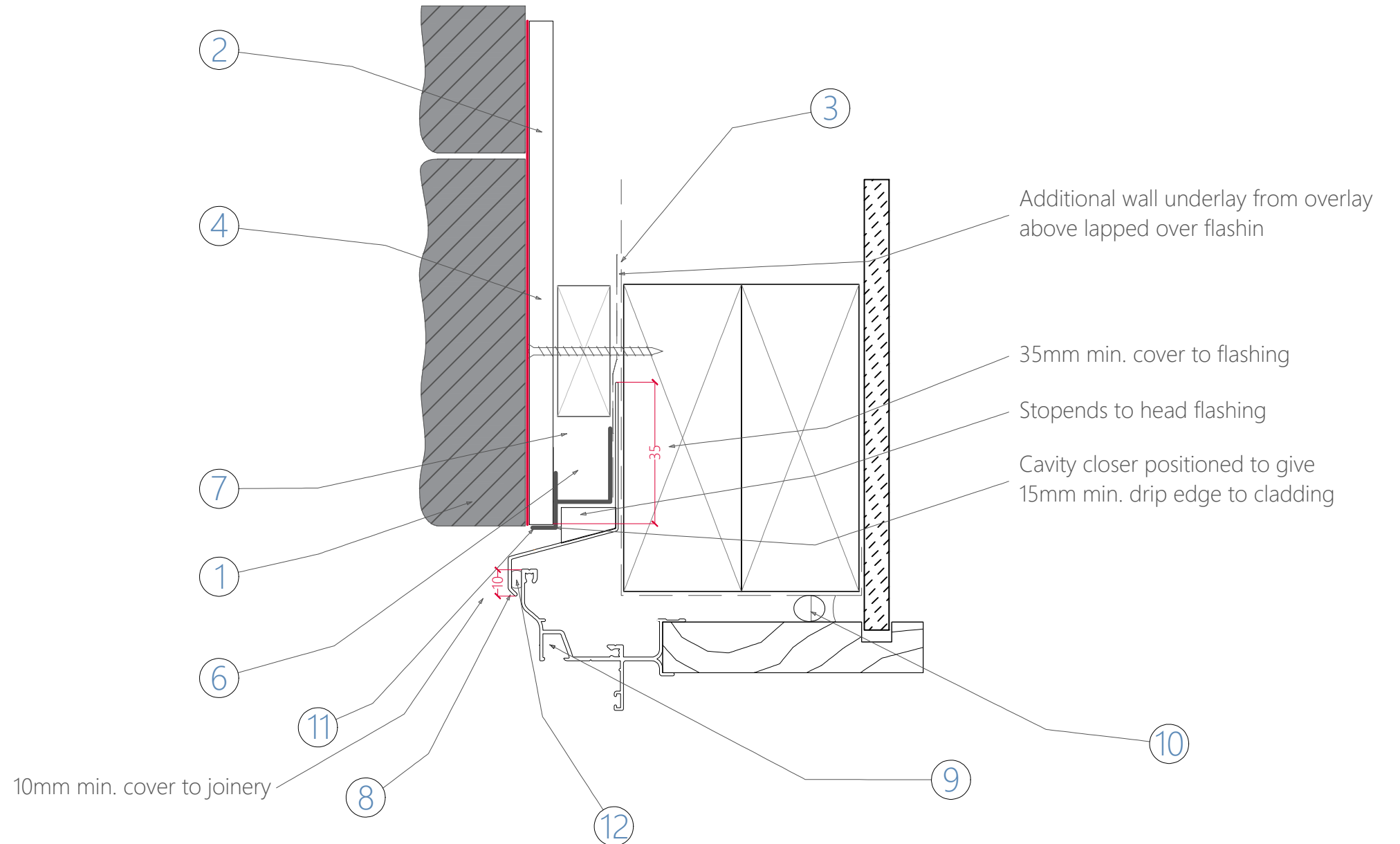


|    |  |
|----|--|
| 1  | Stone Cladding 40mm  |
| 2  | Eterpan Base, 9mm  |
| 3  | Building Wrap, RAB or other E2/AS1 compliant system  |
| 4  | Mapelastic Smart Waterproofing System w/ Mapeband SA   |
| 5  | Sealant (Sika AT Facade or similar)  |
| 6  | Screw Detail<br>For use with building wrap<br>Screw SS, 10g, 63mm<br>Coastal- 316<br>Non Coastal- 304<br>For use with Rigid Air Barrier (7mm Ecoply or similar)<br>Screw SS, 10g, 75mm<br>Coastal- 316<br>Non Coastal- 304 |
| 7  | Cavity Batten, Castellated, 50x20mm  |
| 8  | Head Flashing  |
| 9  | Window System (proprietary)  |
| 10 | Foam Air Seal  |
| 11 | Cavity Closer EzyBuild K Strip or similar  |
| 12 | Mapei PU45 (or similar) bead along window fin  |



**INTELLECTUAL PROPERTY NOTICE**

1. **PEDRACLAD®** and related materials are owned by Stone Cladding Systems Limited and are protected by international copyright, trademark, design and other intellectual property and proprietary rights.
2. Unauthorised use or alteration is prohibited without express permission from Stone Cladding Systems Limited or Island Stone NZ Ltd as its designated agent.
3. The information contained in these drawings is intended exclusively for use with ISNZ/NSC supplied products or authorised agents as part of a total system.
4. **STONE CLADDING SYSTEMS LIMITED** provides no certification, guarantee, indemnity or warranty in respect of the information contained herein if used with any non ISNZ/NSC supplied product without **PEDRACLAD®** permission.
5. Any use of this information beyond the purpose for which it was intended is strictly prohibited including the use in unauthorised projects or in conjunction with non ISNZ/NSC products and may result in legal action.

|                 |                           |   |   |                |
|-----------------|---------------------------|---|---|----------------|
| Drawing:        | Window Flush Mounted Head | <b>PEDRACLAD®</b> STONE CLADDING INSTALLATION SYSTEMS | Scale:  | NTS @ A3       |
| Drawing Number: | 10                        |   | Licensed to Island Stone NZ Ltd and The Natural Stone Co. | Sheet Details: |
|                 |                           |   | Date:   | 11-May-26      |