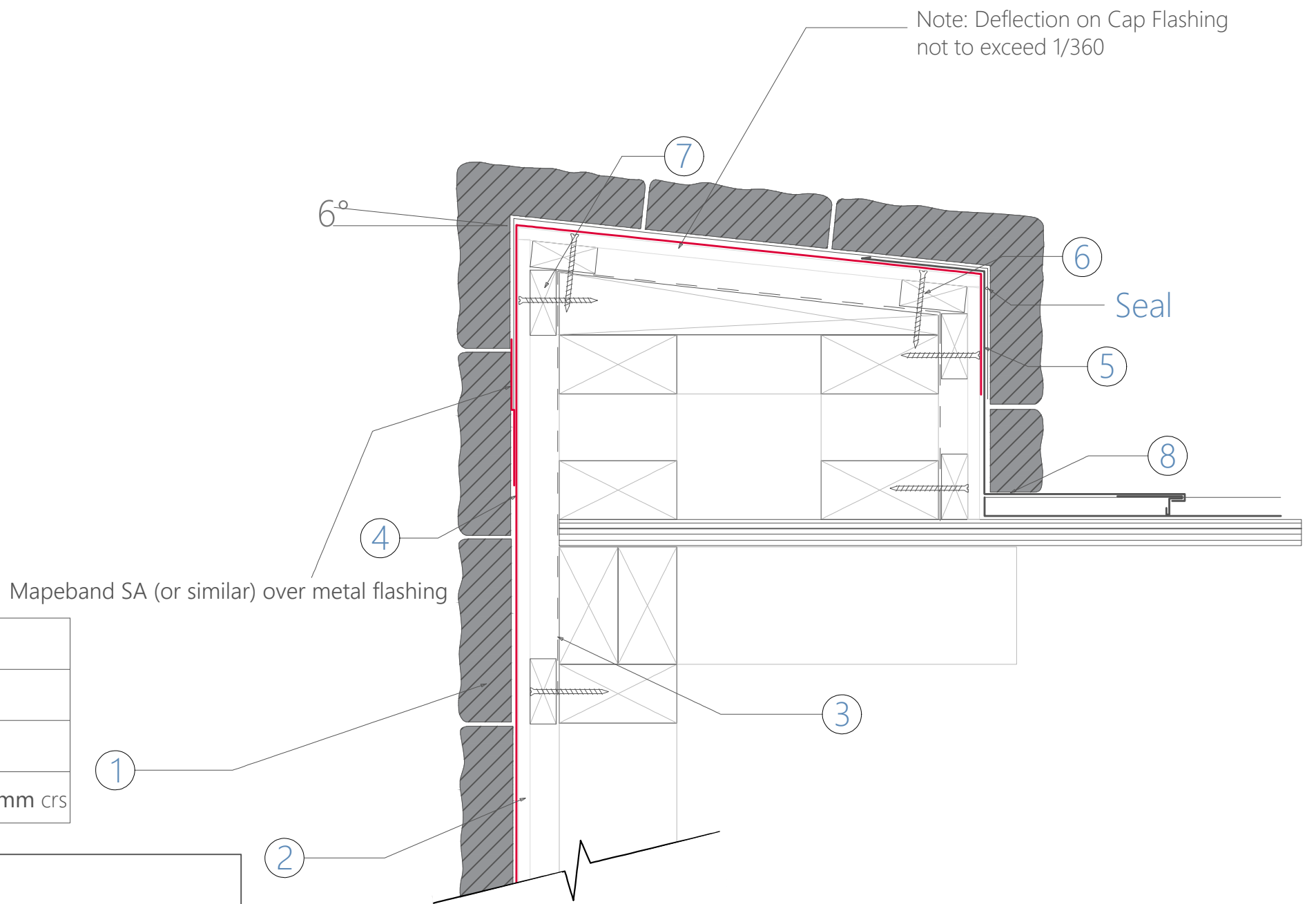


1	Stone Cladding 40mm
2	Eterpan Base, 9mm
3	Building Wrap, RAB or other E2/AS1 compliant system
4	Mapelastic Smart Waterproofing System w/ Mapeband SA
5	Metal Parapet Cap
6	Screw Detail For use with building wrap Screw SS, 10g, 63mm Coastal- 316 Non Coastal- 304 For use with Rigid Air Barrier (7mm Ecoply or similar) Screw SS, 10g, 75mm Coastal- 316 Non Coastal- 304
7	Cavity Batten, Castellated, 50x20mm
8	Metal Flashing

Max. wet weight of stone 80kg	Max. wet weight of stone 100kg
Studs @ max. 600mm crs	Studs @ max. 400mm crs
Nogs @ max. 800mm crs	Nogs @ max. 800mm crs
Screws to all framing @ max.150mm crs	Screws to all framing @ max. 150mm crs

**INTELLECTUAL PROPERTY NOTICE**

- PEDRACLAD®** and related materials are owned by Stone Cladding Systems Limited and are protected by international copyright, trademark, design and other intellectual property and proprietary rights.
- Unauthorised use or alteration is prohibited without express permission from Stone Cladding Systems Limited or Island Stone NZ Ltd as its designated agent.
- The information contained in these drawings is intended exclusively for use with ISNZ/NSC supplied products or authorised agents as part of a total system.
- STONE CLADDING SYSTEMS LIMITED** provides no certification, guarantee, indemnity or warranty in respect of the information contained herein if used with any non ISNZ/NSC supplied product without **PEDRACLAD®** permission.
- Any use of this information beyond the purpose for which it was intended is strictly prohibited including the use in unauthorised projects or in conjunction with non ISNZ/NSC products and may result in legal action.



Drawing:	Parapet & Balustrade Detail	<b>PEDRACLAD®</b> STONE CLADDING INSTALLATION SYSTEMS	Scale:	NTS @ A3
Drawing Number:	16		Licensed to Island Stone NZ Ltd and The Natural Stone Co.	Sheet Details:
			Date:	11-May-26