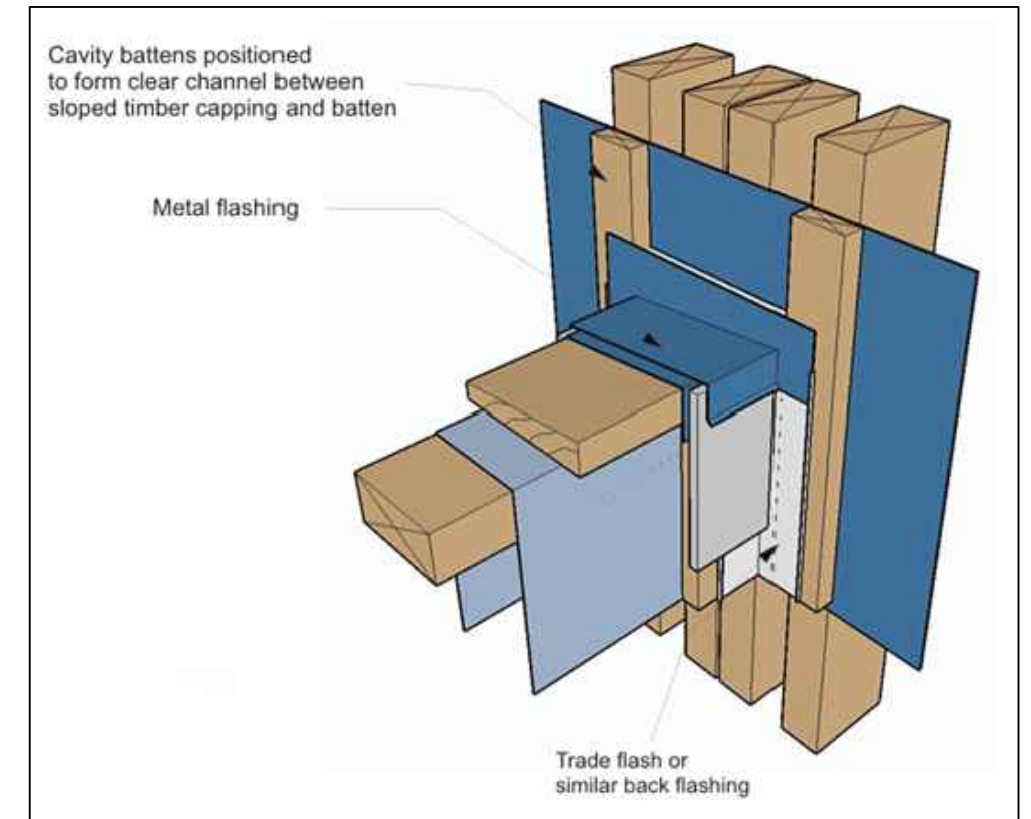
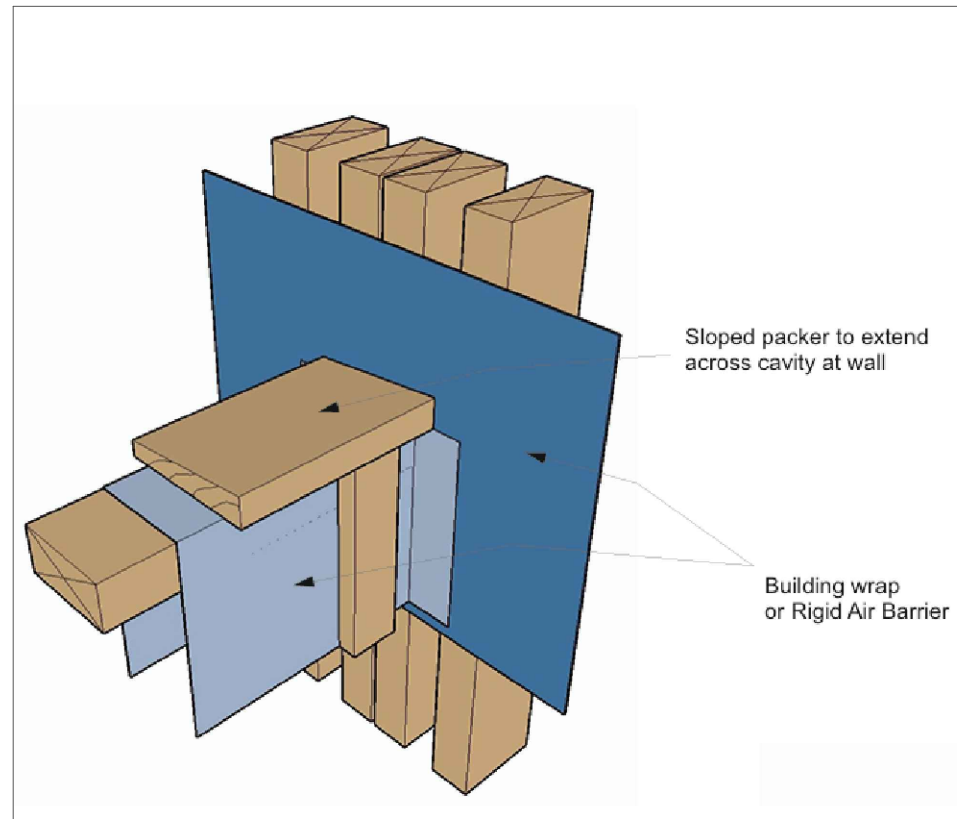


Saddle Flashing

Flexible flashing tape dressed up and securely adhered to wall underlay at rear of cavity.
Flexible flashing tape dressed min. 50mm down face of battens.

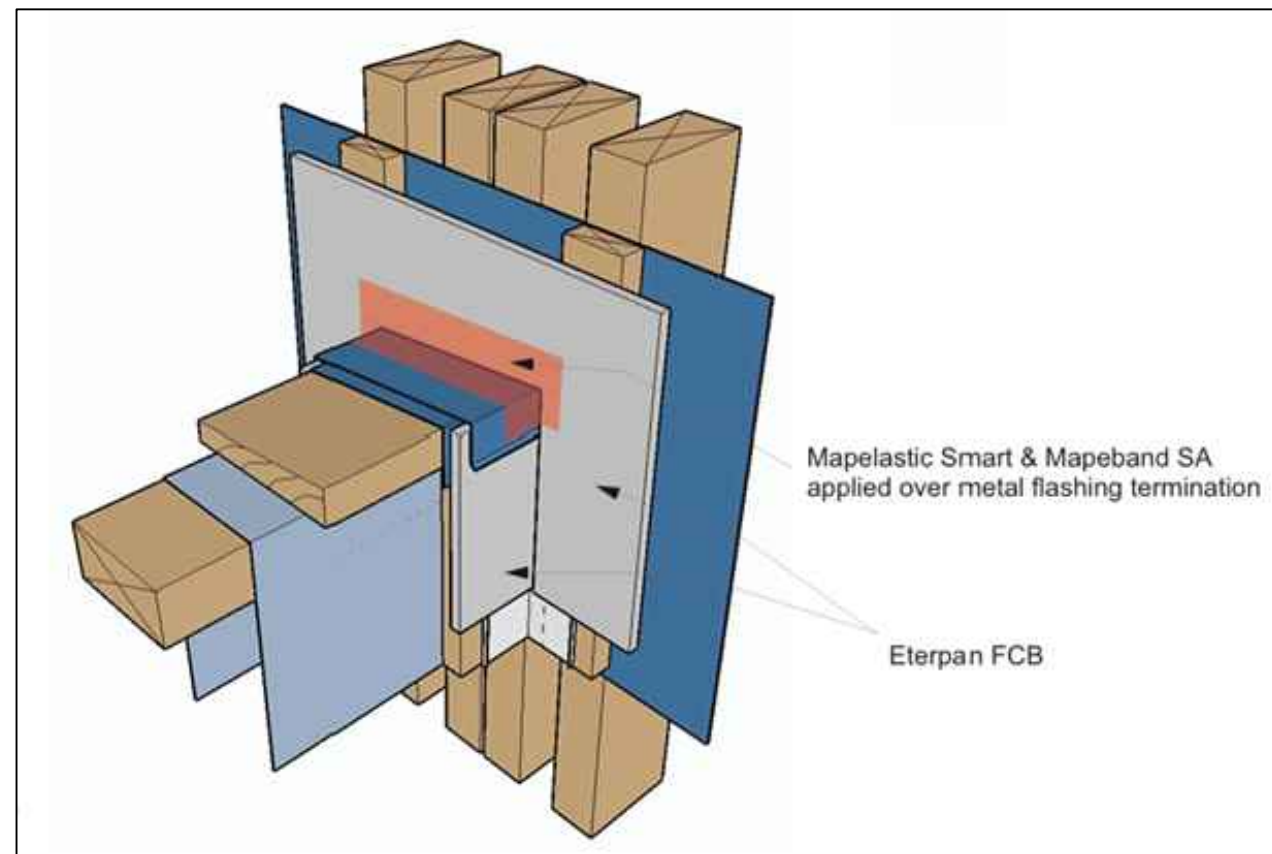
Note:

1. The junction is weatherproofed by the saddle flashing which is positioned at the front of the cavity as shown.
2. The flexible flashing tape over the sloped capping packer is intended to drain only moisture from within the drained cavity above and to direct it into the adjacent continuous cavity.
3. Separation layer of underlay between sloped timber capping and capping flashing omitted for clarity.



INTELLECTUAL PROPERTY NOTICE

1. **PEDRACLAD®** and related materials are owned by Stone Cladding Systems Limited and are protected by international copyright, trademark, design and other intellectual property and proprietary rights.
2. Unauthorised use or alteration is prohibited without express permission from Stone Cladding Systems Limited or Island Stone NZ Ltd as its designated agent.
3. The information contained in these drawings is intended exclusively for use with ISNZ/NSC supplied products or authorised agents as part of a total system.
4. **STONE CLADDING SYSTEMS LIMITED** provides no certification, guarantee, indemnity or warranty in respect of the information contained herein if used with any non ISNZ/NSC supplied product without **PEDRACLAD®** permission.
5. Any use of this information beyond the purpose for which it was intended is strictly prohibited including the use in unauthorised projects or in conjunction with non ISNZ/NSC products and may result in legal action.



Drawing:	Parapet & Balustrade Isometric Detail	PEDRACLAD® STONE CLADDING INSTALLATION SYSTEMS	Scale:	NTS @ A3
Drawing Number:	17	Licensed to Island Stone NZ Ltd and The Natural Stone Co.	Sheet Details:	S-01
			Date:	07-May-26