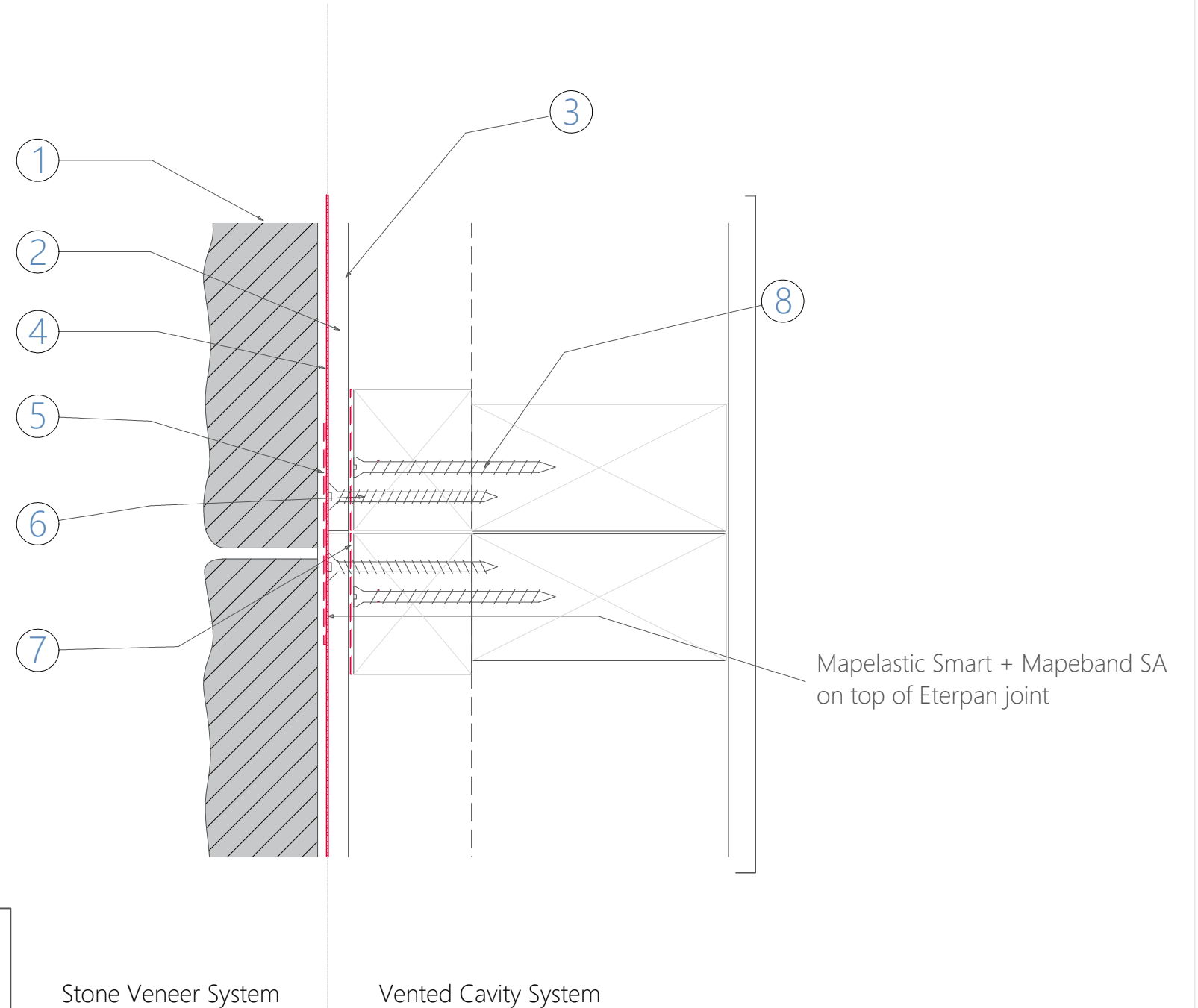


1	Stone Cladding 40mm
2	Eterpan Base, 9mm
3	Building Wrap, RAB or other E2/AS1 compliant system
4	Mapelastic Smart Waterproofing Membrane
5	Foam tape or similar
6	Screw Detail For use with building wrap Screw SS, 10g, 35mm Coastal- 316 Non Coastal- 304 For use with Rigid Air Barrier (7mm Ecoply or similar) Screw SS, 20g, 35mm Coastal- 316 Non Coastal- 304
7	Cavity Batten, 40-45mm x 40-45mm, Nogs/Dwangs to be inclined 5°
8	Structural Cavity Batten Fixing 16G x 100mm by Engineer



INTELLECTUAL PROPERTY NOTICE

1. **PEDRACLAD®** and related materials are owned by Stone Cladding Systems Limited and are protected by international copyright, trademark, design and other intellectual property and proprietary rights.
2. Unauthorised use or alteration is prohibited without express permission from Stone Cladding Systems Limited or Island Stone NZ Ltd as its designated agent.
3. The information contained in these drawings is intended exclusively for use with ISNZ/NSC supplied products or authorised agents as part of a total system.
4. **STONE CLADDING SYSTEMS LIMITED** provides no certification, guarantee, indemnity or warranty in respect of the information contained herein if used with any non ISNZ/NSC supplied product without **PEDRACLAD®** permission.
5. Any use of this information beyond the purpose for which it was intended is strictly prohibited including the use in unauthorised projects or in conjunction with non ISNZ/NSC products and may result in legal action.

Drawing:	40-45mm: Horizontal Joint	PEDRACLAD® STONE CLADDING INSTALLATION SYSTEMS	Scale:	NTS @ A3
Drawing Number:	26		Licensed to Island Stone NZ Ltd and The Natural Stone Co.	Sheet Details:
			Date:	11-May-26