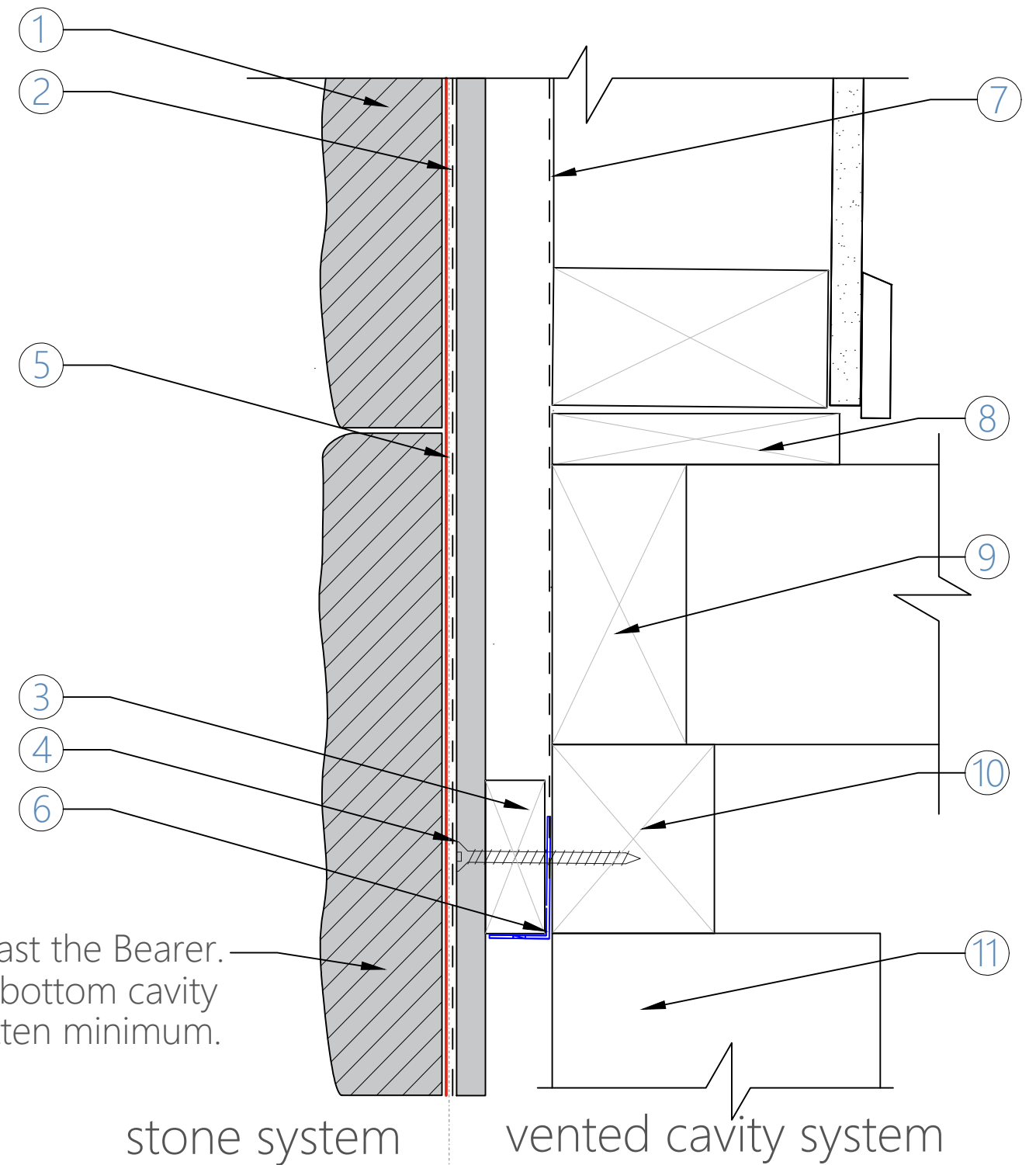


1	Stone Cladding, 40mm
2	Mapelastic Smart Waterproofing System
3	Cavity Batten, Castellated, 50x20mm
4	For use with building wrap Screw, SS, 10g 63mm Coastal - 316 Non Coastal - 304 For use with Rigid Air Barrier (7mm EcoPly or similar) Screw, SS, 10g 75mm Coastal - 316 Non Coastal - 304
5	Mapelastic Waterproofing Membrane
6	Cavity Vermin Barrier
7	Building Wrap, RAB or other E2/AS1 compliant system
8	Flooring
9	Boundary Joist
10	Bearer
11	Pile

INTELLECTUAL PROPERTY NOTICE

1. **PEDRACLAD®** and related materials are owned by Stone Cladding Systems Limited and are protected by international copyright, trademark, design and other intellectual property and proprietary rights.
2. Unauthorised use or alteration is prohibited without express permission from Stone Cladding Systems Limited or Island Stone NZ Ltd as its designated agent.
3. The information contained in these drawings is intended exclusively for use with ISNZ/NSC supplied products or authorised agents as part of a total system.
4. **STONE CLADDING SYSTEMS LIMITED** provides no certification, guarantee, indemnity or warranty in respect of the information contained herein if used with any non ISNZ/NSC supplied product without **PEDRACLAD®** permission.
5. Any use of this information beyond the purpose for which it was intended is strictly prohibited including the use in unauthorised projects or in conjunction with non ISNZ/NSC products and may result in legal action.

Stone to extend 50mm past the Bearer.
Paper to extend below bottom cavity batten minimum.



Max. wet weight of stone 80kg	Max. wet weight of stone 100kg
Studs @ max. 600mm crs	Studs @ max. 400mm crs
Nogs @ max. 800mm crs	Nogs @ max. 800mm crs
Screws to all framing @ max. 150mm crs	Screws to all framing @ max. 150mm crs

Drawing:	Bottom Plate Detail Timber Subfloor	PEDRACLAD® STONE CLADDING INSTALLATION SYSTEMS	Scale:	NTS @ A3
Drawing Number:	37	Licensed to Island Stone NZ Ltd and The Natural Stone Co.	Sheet Details:	S-01
			Date:	12-May-26