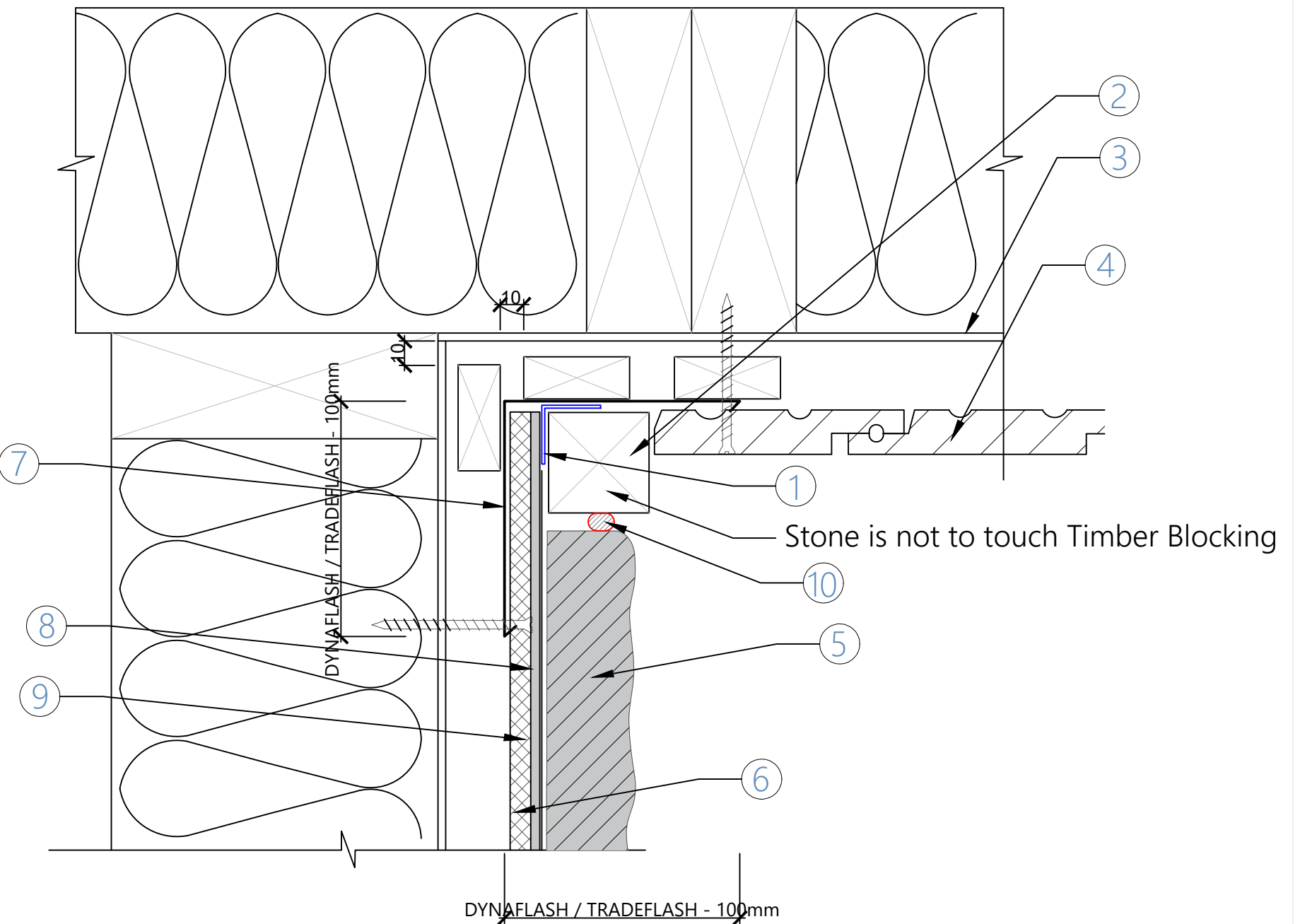


1	Mapeband SA/Technokolla RL80 Tape
2	50 x 50mm Timber Blocking
3	Rigid/Paper RAB Approved Tape to CNRS Joints
4	Envello Cladding
5	Stone Cladding, 40mm
6	9mm Eterpan
7	Corner Flashing 100mm, Hemmed Edges
8	Adhesive Mapei Kerabond Plus and Mapei Isolastic
9	Mapelastic Smart Waterproofing Membrane with Mapeband SA / Technokolla Rasolastic Advance with RL80 Tape
10	Sealant Joint with PEF Rod

Max. wet weight of stone 80kg	Max. wet weight of stone 100kg
Studs @ max. 600mm crs	Studs @ max. 400mm crs
Nogs @ max. 800mm crs	Nogs @ max. 800mm crs
Screws to all framing @ max. 150mm crs	Screws to all framing @ max. 150mm crs

INTELLECTUAL PROPERTY NOTICE

1. **PEDRACLAD®** and related materials are owned by Stone Cladding Systems Limited and are protected by international copyright, trademark, design and other intellectual property and proprietary rights.
2. Unauthorised use or alteration is prohibited without express permission from Stone Cladding Systems Limited or Island Stone NZ Ltd as its designated agent.
3. The information contained in these drawings is intended exclusively for use with ISNZ/NSC supplied products or authorised agents as part of a total system.
4. **STONE CLADDING SYSTEMS LIMITED** provides no certification, guarantee, indemnity or warranty in respect of the information contained herein if used with any non ISNZ/NSC supplied product without **PEDRACLAD®** permission.
5. Any use of this information beyond the purpose for which it was intended is strictly prohibited including the use in unauthorised projects or in conjunction with non ISNZ/NSC products and may result in legal action.



Drawing:	Corner Blocking Weatherboard/Shiplap to Stone Cladding Corner Junction	PEDRACLAD® STONE CLADDING INSTALLATION SYSTEMS	Scale:	NTS @ A3
Drawing Number:	39		Licensed to Island Stone NZ Ltd and The Natural Stone Co.	Sheet Details:
			Date:	12-May-26