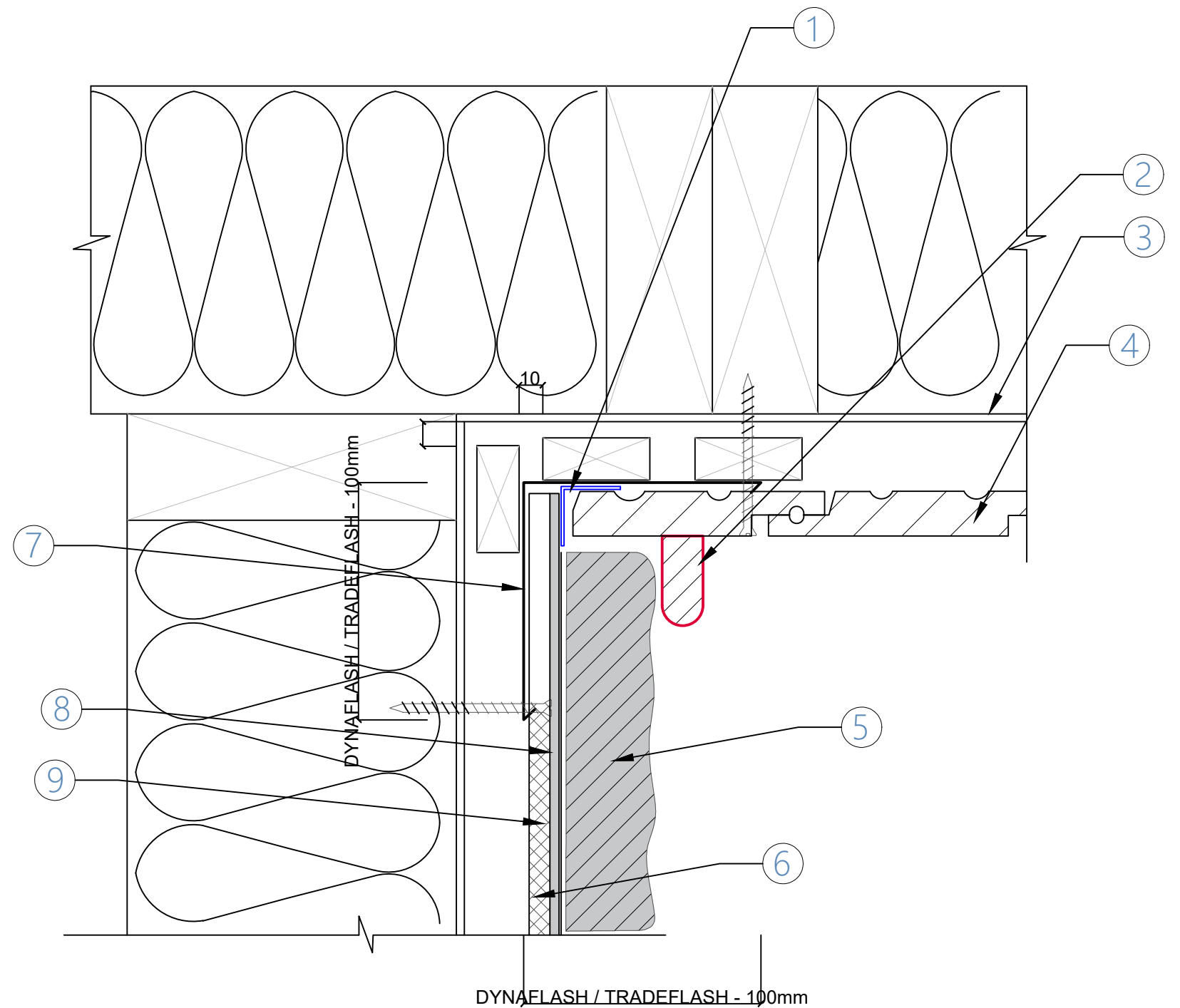


1	Mapeband SA/Technokolla RL80 Tape
2	Timber Scribber
3	Rigid/Paper RAB Approved Tape to CNRS Joints
4	Envello Cladding
5	Stone Cladding, 40mm
6	9mm Eterpan
7	Corner Flashing 100mm, Hemmed Edges
8	Adhesive Mapei Kerabond Plus and Mapei Isolastic
9	Mapelastic Smart Waterproofing Membrane with Mapeband SA/Technokolla Rasolastic Advance with RL80 Tape

Max. wet weight of stone <b>80kg</b>	Max. wet weight of stone <b>100kg</b>
Studs @ max. <b>600mm</b> crs	Studs @ max. <b>400mm</b> crs
Nogs @ max. <b>800mm</b> crs	Nogs @ max. <b>800mm</b> crs
Screws to all framing @ max. <b>150mm</b> crs	Screws to all framing @ max. <b>150mm</b> crs

**INTELLECTUAL PROPERTY NOTICE**

- PEDRACLAD®** and related materials are owned by Stone Cladding Systems Limited and are protected by international copyright, trademark, design and other intellectual property and proprietary rights.
- Unauthorised use or alteration is prohibited without express permission from Stone Cladding Systems Limited or Island Stone NZ Ltd as its designated agent.
- The information contained in these drawings is intended exclusively for use with ISNZ/NSC supplied products or authorised agents as part of a total system.
- STONE CLADDING SYSTEMS LIMITED** provides no certification, guarantee, indemnity or warranty in respect of the information contained herein if used with any non ISNZ/NSC supplied product without **PEDRACLAD®** permission.
- Any use of this information beyond the purpose for which it was intended is strictly prohibited including the use in unauthorised projects or in conjunction with non ISNZ/NSC products and may result in legal action.



Drawing:	Timber Scribber	PEDRACLAD® STONE CLADDING INSTALLATION SYSTEMS	Scale:	NTS @ A3
Drawing Number:	41		Licensed to Island Stone NZ Ltd and The Natural Stone Co.	Sheet Details:
			Date:	12-May-26