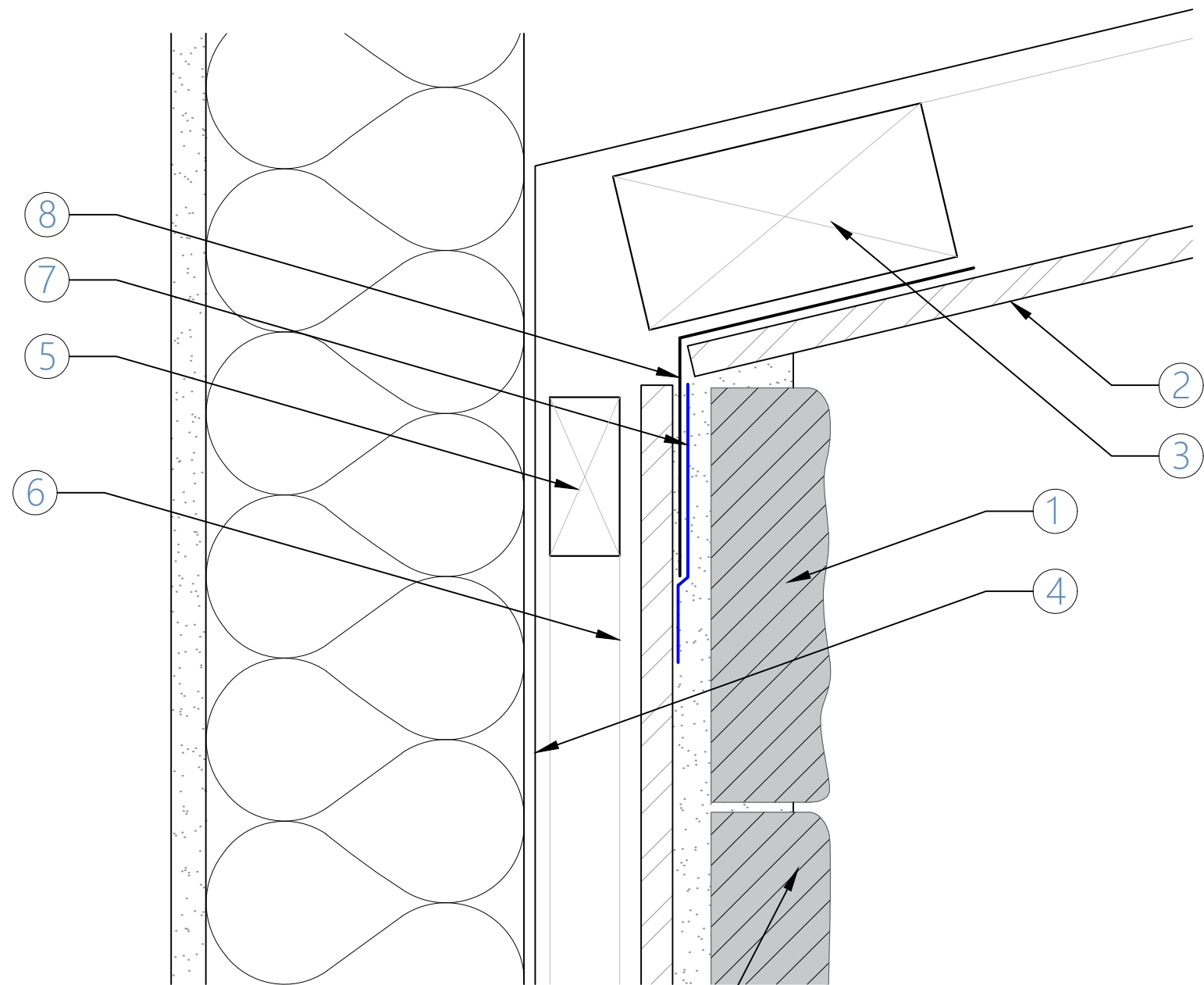


1	Stone Cladding 40mm
2	Soffit
3	Timber Framing
4	Building Underlay
5	Continuous Horizontal Packer
6	Cavity System
7	70mm Island Stone Mortar-compatible flashing tape
8	Approved cusm-made metal flashing firmly screw fixed to 9mm FCB

Max. wet weight of stone 80kg	Max. wet weight of stone 100kg
Studs @ max. 600mm crs	Studs @ max. 400mm crs
Nogs @ max. 800mm crs	Nogs @ max. 800mm crs
Screws to all framing @ max. 150mm crs	Screws to all framing @ max. 150mm crs

INTELLECTUAL PROPERTY NOTICE

- PEDRACLAD®** and related materials are owned by Stone Cladding Systems Limited and are protected by international copyright, trademark, design and other intellectual property and proprietary rights.
- Unauthorised use or alteration is prohibited without express permission from Stone Cladding Systems Limited or Island Stone NZ Ltd as its designated agent.
- The information contained in these drawings is intended exclusively for use with ISNZ/NSC supplied products or authorised agents as part of a total system.
- STONE CLADDING SYSTEMS LIMITED** provides no certification, guarantee, indemnity or warranty in respect of the information contained herein if used with any non ISNZ/NSC supplied product without **PEDRACLAD®** permission.
- Any use of this information beyond the purpose for which it was intended is strictly prohibited including the use in unauthorised projects or in conjunction with non ISNZ/NSC products and may result in legal action.



selected stone veneer over adhesive mortar on 9mm FCB fixed according to manufacturers construction details

Drawing:	Reverse-Slope Soffit Flashing	PEDRACLAD® STONE CLADDING INSTALLATION SYSTEMS	Scale:	NTS @ A3
Drawing Number:	46	Licensed to Island Stone NZ Ltd and The Natural Stone Co.	Sheet Details:	S-01
			Date:	12-May-26