



# GREYSON WEST

LUXURY RENTALS



Living, simplified.  
*Lifestyle, amplified.*



Rooted between downtown Hartford and historic Simsbury, in a quintessential West Hartford neighborhood that offers both quiet and convenience, this community redefines modern living through purposeful luxury and effortless connection. Abundant, thoughtfully designed amenities simplify the everyday, while curated shared spaces invite neighbors to work, gather, unwind, and belong. Here, living is streamlined, lifestyle is elevated, and every detail is designed to amplify *how you live, connect, and thrive.*



# Timeless *Luxury*

## *Time is the ultimate luxury*

...and it's exactly what these spaces are designed to give back.

Here, amenities go beyond convenience, creating an experience of luxury apartment rentals built within a private club or boutique hotel.

- Curated spaces blur the lines between residence and retreat, indoors and outdoors, home and haven.
- Surrounded by garden courtyards and greenspace, this sprawling manor-style building invites moments of calm, while wellness and spa-inspired spaces engage the senses and elevate the everyday.
- Each environment is intentionally designed and distinctly crafted. Greyson West is curated to feel restorative and personal.



**GREYSON  
WEST**  
LUXURY RENTALS

# Amenities *Amplified*

## INDOORS & OUT

Designed with time in mind, our amenities offer the experience of a private retreat—without ever leaving home.

- Indoor and outdoor spaces flow seamlessly, from the gallery hall to the dining terrace... from the reflection pool to the sauna.
- From light-filled garden courtyards to wellness and spa environments that awaken the senses, every space is curated to feel original, restorative, and scaled for comfort.

## SOCIAL & SHARED SPACES

- Spaces designed for connection with opportunities for quiet retreat. From intimate lounges to inviting gathering areas, these environments feel curated rather than crowded, offering the warmth of a private club with the ease of home.
- Spaces are perfect for impromptu conversations, quiet coworking, or hosting with confidence.

## FITNESS & MOVEMENT

- Wellness, redefined. State-of-the-art fitness spaces are designed to motivate and restore.
- Whether focused on performance or balance, you'll have premier access to a well-equipped weight room, cardio+fit space, and stretching studio, each designed to elevate your personal wellness.



**GREYSON  
WEST**  
LUXURY RENTALS



**BACK  
NINE**  
ATHELETIC CLUB

### GAME & GOLF-CENTRIC

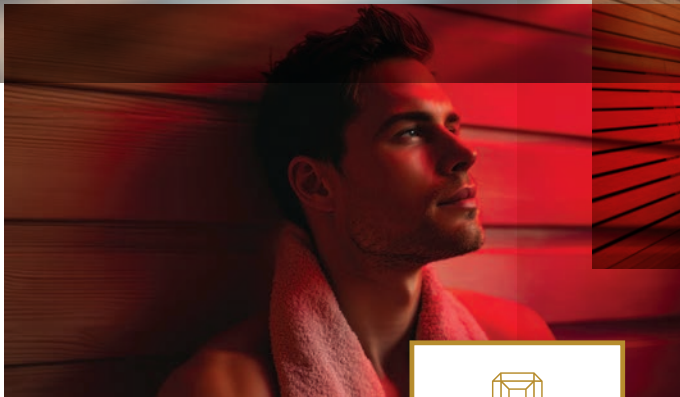
Even though you're just minutes from local golf and private clubs, your community is built for fun on the homefront. At Greyson West you can challenge neighbors at your own Back 9 golf and game simulator, play cards in the café, or gather in the entertainment kitchen, media lounge or library. Every space is designed for effortless connection, friendly competition, and curated moments of leisure.



**CLOUD  
NINE**  
SPA

### SPA & RELAXATION

Cloud 9 at Greyson West is your tranquil retreat, steps from your door. Spa-inspired spaces calm the senses and encourage restoration, from a salt room retreat to red light sauna. These are places to slow down, reset, and recharge without ever needing an appointment.



**GREYSON  
WEST**  
LUXURY RENTALS



**GREYSON  
WEST**  
LUXURY RENTALS

# Life Simplified

## *Quiet Luxury, Thoughtfully Redefined*

The residences are designed as a calm counterpoint to a full, connected life, where simplicity, quality, and intention take center stage.

- With a softer kind of luxury, cozy yet efficient design balances comfort and intention, creating spaces that feel both welcoming and purposeful.
- Large, spa-inspired bathrooms and smartly appointed kitchens with quartz countertops and classic white cabinetry reflect a clean, timeless aesthetic. Beneath the surface, spaces and selections feel solid, serene, and effortlessly comfortable.
- We considered every detail in this renovation, so your life and rental experience feels simplified—including utilities you don't have to manage; they are already built into your monthly rent.\*

*\*Water and electricity are included. Some exclusions apply.*



**GREYSON  
WEST**  
LUXURY RENTALS

# Elevated yet Simplified

**LIGHT, ELEVATED** A collection of elevator-served studio, one-, two-, and select three-bedroom residences, thoughtfully designed with nine-foot ceilings and large windows that bring in natural light and enhance the sense of openness.

**CALM BY DESIGN** Thoughtful materials deliver a sense of quiet you can feel; where privacy is protected and the pace of home naturally slows.

**KITCHENS THAT ENDURE** Quartz countertops and timeless white cabinetry offer a clean, refined backdrop for daily life; beautiful, durable, and efficient.

**BATHROOMS, EXPANDED** Generously sized bathrooms transform everyday routines into moments of ease, comfort, and restoration. Natural wood finish with black fixtures and hardware, quartz vanities, and natural stone invigorate the space.

**PETS WELCOME** Pet-friendly apartments and amenities—including a Paw Spa, fenced social space, and abundant surrounding green areas ensure your four-legged companions feel right at home.

**ALL INCLUSIVE** A rental experience that feels service-oriented and simplified, including utilities that you don't have to manage.\*

*\*Water and electricity are included. Some exclusions apply.*



**GREYSON  
WEST**  
LUXURY RENTALS

# Location & Lifestyle *Defined*

## *Perfectly Positioned in West Hartford*

Set within one of West Hartford's most desirable enclaves, the location offers a rare balance of privacy and proximity. Across the street from the historic Hartford Golf Club and moments from Wampanoag and Tumble Brook Country Clubs, this location is defined by green space, recreation, and an unmistakable sense of history and refinement. Just a few streets away, Bishop's Corner brings everyday convenience into easy reach. From well-loved eateries to Target and Whole Foods, your daily needs are close at hand. It's a place where serene surroundings and vibrant daily life coexist seamlessly, allowing residents to move effortlessly between retreat and connection.

It's a location designed with lifestyle in mind; for outdoor recreation, for personal connection, for convenience. You'll live at the corner where everything aligns with the way you want to move through your day.

- Beyond neighborhood convenience in West Hartford, this location keeps the world within reach.
- Downtown Hartford and major employers like Aetna, Cigna, St Francis Hospital, and ESPN, are easily accessible for work or appointments.
- West Hartford invites weekend cultural and recreational escapes.
- Proximity to Bradley International Airport ensures travel is effortlessly convenient.

It's a lifestyle designed for community, convenience, and the quiet luxury of living where everything aligns.



**GREYSON  
WEST**  
LUXURY RENTALS



160 SIMSBURY ROAD, WEST HARTFORD, CT 06117 | 860.222.0683

[GREYSONWESTHARTFORD.COM](http://GREYSONWESTHARTFORD.COM)

