

Ways to Work with Me



THE
FREQUENCY
ARCHITECT

www.thefrequencyarchitect.co


Hello & Welcome



Hi, I'm Chanel

I'm a frequency architect and multidimensional guide, working with frequency and energetic architecture to foster deep soul remembrance and restore coherence.

For bookings and enquiries:

 @the_frequencyarchitect

 chanel@thefrequencyarchitect.co

About me

This is work my soul has carried through lifetimes. It was not learned, it was remembered.

Through my own awakening journey, I moved beyond distortion, forgetting, conditioning and inherited limitation to reconnect with my original architecture and the technologies encoded within my field. What I offer now is not theory, method or teaching. It's frequency architecture.

I generate, weave and execute frequency-based technologies within carefully constructed energetic corridors. My field operates as an intelligent system - responsive, multidimensional and encoded with light technologies that activate as required.

I guide through presence, resonance and architectural design of the unseen, in service to the restoration of the soul's original blueprint.

My work is devoted to remembrance and the recalibration of the unseen structures that shape human experience. As individual systems return to coherence, they contribute to a wider restoration, supporting the stabilisation and evolution of consciousness on Earth.

Each offering is a direct expression of this work: not healing in the traditional sense, but recalibration, reorganisation and remembrance at the level of energetic design.

If you are here, it is likely because something within you recognises this language - welcome.

The Ecosystem

All work operates within the realm of frequency medicine and energetic architecture, with each pathway an entry point into the same body of work that's always evolving.

The North Star: Returning to your soul's original design.

1

INDIVIDUAL FIELD

Precise, personal 1:1 work within a single soul's energetic architecture.

- Root Clearing
- Light Body Recalibration
- Guided Sacred Ceremony

2

COLLECTIVE FIELD

Group containers for transmission, collective activation and shared remembrance.

- Light Language Transmissions
- Retreats
- Events

To stay up to date, follow me on Instagram, visit my website or join my mailing list.

3

LEARNING FIELD

Education, training and consciousness expansion, equipping souls with tools and understanding to navigate their own awakening.

- Workshops + Trainings
- Webinars

To stay up to date, follow me on Instagram, visit my website or join my mailing list.

Root Clearing

An energetic clearing of the hooks, loops and patterns that keep the soul bound to the past

Purpose

To dissolve the specific patterns, programs, loops and energetic density that keep the soul bound to the past, *at the root*, so that the present can be met with clarity, freedom and forward movement.

This is a precision session. You are bringing the thread that has surfaced - the pattern, loop or distortion that has risen to the top of your awareness and is ready to be cleared. We follow it to its root, identify and dissolve the hook, and restore coherence within your field.

Session Structure

Duration: 90 minutes

Format: Online

What is Root Clearing?

Very often our present is being informed by our past.

Every pattern, program or emotional loop that replays in your present reality has a point of origin - a moment, imprint or experience that first anchored it into your field. This is the hook. It is the hook that keeps the pattern looping, regardless of how much surface-level work has been done.

Root Clearing tracks each pattern back through the timelines where it originated within your field, and where required, extending into off-planet and galactic timelines. By identifying and clearing the hook at its source, the pattern no longer has a point of origin to loop from and dissolves from your energetic architecture.

The session is facilitated entirely through frequency - through attunement, intuitive navigation and direct engagement with the field. It is conversational in nature: you share, I listen and track through your field. We move through the work together, guided by the intelligence of your own soul.

This session also holds space for relational clearing - where distortion is present in the shared field between two souls, through unresolved agreements or dynamics from prior lifetimes.

Individual Clearing - Clearing repeating patterns, programs, loops, trauma and density from your own field at the root so that the past no longer informs the present.

Relational Clearing - Clearing the distortion present in the shared field between two souls - dissolving unresolved programs from prior meetings so that the present-day connection may unfold without fragmentation, looping or the repetition of old patterns.

The Scope of This Work

A hook can take many forms. Whatever form the anchor has taken, we work with it directly.

Hooks may include:

- Contracts, agreements, vows and oaths
- Spells, hexes, curses and dark arts (black magic, sorcery, voodoo, juju)
- Psychic attack and thought-forms directed toward the field
- Entity attachments
- Galactic interference
- Unresolved trauma and ancestral density
- Deeply held beliefs and ingrained patterns of behaviour that have taken root in the architecture

Where entities are found to be attached to a pattern or loop, these are cleared within the same session. Where galactic interference is identified, a targeted galactic clearing protocol is applied. Nothing is left unaddressed.

The Impact

As hooks are dissolved and coherence is restored at the root, clients often notice:

- A palpable sense of relief, lightness or spaciousness - as though something that was pressing on the field has lifted
- Patterns that previously felt immovable beginning to lose their charge or simply stop replaying
- Greater clarity around decisions, direction and relationships
- A renewed sense of sovereignty and self-leadership
- Shifts in relational dynamics
- Increased energetic clarity, intuitive access and emotional steadiness
- A deeper felt-sense of freedom and forward movement

Integration

Clearing at the root initiates a reorganisation within the field. Some patterns dissolve quietly and completely. Others may surface briefly as physical sensations, emotional movement or shifts in perception before settling. This is a natural part of the process.

You do not need to relive or consciously process the experiences held in the timelines we work through. The clearing occurs at the energetic and architectural level, not the narrative one. Integration continues in the days following the session as your field stabilises around the new coherence.

Root Clearing may be done as a standalone session or returned to over time, as new threads surface and the soul signals readiness for deeper work.

Who This Is For

This work may be for you if:

- A pattern of behaviour, emotional loop or recurring life experience continues to replay despite the inner work you have already done
- You feel stuck in a relational dynamic - with a partner, family member, collaborator or friend - that seems to run deeper than the present lifetime
- You have a persistent sense that something unseen is creating interference in your field, your relationships or your reality
- You suspect dark arts, psychic attack or entity interference may be present
- Vows, contracts or oaths feel active in your field and are limiting your freedom, abundance or self-expression
- You sense an unresolved thread from another timeline (on Earth or off-planet) influencing your current experience
- You have been unravelling a pattern for some time and feel you have not yet reached the root of it
- Something has surfaced following a Light Body Recalibration that feels ready to be cleared
- Understand this is not a talk therapy or psychological support session, it's energetic architecture work

Energetic Exchange

Root Clearing is offered as an energetic exchange that reflects the depth of presence, precision and field-holding required to navigate this work with integrity.

- **Investment:** \$333
- **Includes:** 90-minute precision container

Within each 90-minute session, we will work through as much as the field allows - beginning with what feels most urgent or present and following the thread from there. We will address as much as we can within our time together, and if threads remain that we haven't reached, these will need to be brought to a follow-on session.



Light Body Recalibration

A frequency-based recalibration of your energetic architecture

Purpose

To support your return to your original soul frequency by recalibrating your light body architecture, restoring energetic coherence, and activating dormant soul codes. This is a *quantum-level session* ideal for those who feel called into deeper layers of remembrance, ready to activate their own soul codes, embody their truth, and align with the life and mission their soul came here to express.

Session Structure

Duration: 75-90 minutes

Format: Online or In-person

What is the Light Body?

Your light body is the *crystalline, multidimensional architecture of your being* — an intelligent energetic system composed of frequency, geometry and encoded consciousness. It's the structural vessel that houses your soul's original blueprint: the eternal, unchanging design of who you are at soul level.

Encoded within it are soul gifts, innate technologies, and energetic templates for purpose, perception and vitality. When coherent, it allows the soul's original design to express fully as clarity, emotional freedom and deep resonance with your soul's truth. When distorted or fragmented, that expression becomes muted or obscured, often appearing as spiritual stagnation, energetic confusion, or a sense of disconnection from self.

What is a Light Body Recalibration?

This is not an energy healing session – it's a *frequency-based recalibration of your energetic blueprint* - the original architectural template that governs how the soul's original blueprint expresses through your body, nervous system, identity and lived experience.

Trauma, conditioning and lineage imprints can distort this blueprint over "time", creating compensatory patterns, energetic density, or incoherence within the system. Rather than working directly with trauma as an experience, this session *restores coherence at the source level*, so that the soul's original design can once again express without interference or fragmentation.

This work is facilitated through embodied frequency technology, intuitive scanning, light language and frequency weaving. Acting as an interface within the unified field, I engage directly with your light body architecture, dissolving non-coherent encoding, reweaving energetic circuits and restoring alignment between soul, body and field.

As coherence returns, the system no longer needs to hold density in the same way.

Integration

Rather than forcing release or catharsis, Light Body Recalibration *initiates a reorganisation from the blueprint layer*. As your energetic architecture comes back into coherence, your system *naturally* recalibrates how it processes sensation, emotion, memory and identity.

This may unfold subtly or gradually. Some patterns dissolve quietly, while others surface briefly as physical sensations, emotional movement, fatigue, insight or shifts in perception. You *do not* need to relive or consciously process trauma for integration to occur. Coherence itself displaces what previously relied on incoherence to exist.

As the vessel that holds your blueprint stabilises, this coherence feeds into your *personal morphogenetic field*, influencing how you relate, choose, respond to and experience reality. Over time, this can result in tangible shifts in nervous system regulation, embodiment, boundaries, creativity and life direction.

Each session builds upon the last, guided by your system's readiness. Integration continues well beyond the session itself, unfolding organically in the days and weeks that follow.

The Impact

Clients often notice:

- A profound sense of coming home to themselves - a felt recognition of something deeply true
- Heightened clarity, intuitive access and inner confidence
- Increased nervous system regulation and emotional steadiness
- A natural release of patterns, behaviours or relationships that were held in place by incoherence
- Activation of creative flow, soul-aligned momentum and a clearer sense of direction
- Deepened discernment, presence and embodiment
- Shifts in how they relate to themselves, others and their reality

Who This Is For

This session is for souls who sense there is more available to them than their current reality reflects, and who are ready to meet that possibility at the level of their energetic architecture. This work may be for you if:

- You have done significant healing and inner work, yet something still feels misaligned, muted or out of reach
- You feel a pull toward deeper remembrance - a sense that dormant aspects of yourself are beginning to stir (even if you don't know what fully means)
- You're navigating a period of transition, reorientation or identity shift and want to support it at the energetic level
- You sense gifts, capacities or clarity that have not yet fully come online
- You are ready to move beyond managing symptoms and into coherence at the source level
- You take full self-responsibility for your path and feel a clear call toward a larger purpose or reason for being here

Energetic Exchange

Light Body Recalibration sessions are offered both *online* and *in person*. The depth, effectiveness and precision of the work remain the same across both formats, as the session operates at the level of the unified field and energetic blueprint rather than physical proximity.

While a single session can initiate meaningful shifts, this work often unfolds most effectively over multiple sessions. Your system can only integrate and reorganise what it is ready to hold in any given moment. For this reason, a *3-session journey* is often recommended. Each session builds upon the previous one, guided intuitively by your readiness and the intelligence of your field.

Online Pricing

- Single Session: \$222
- Three-Session Journey: \$600

In-Person Sessions:

(held in Cape Town, Bali or Dubai at various points in the year)

- Single Session: \$255
- Three-Session Journey: \$700

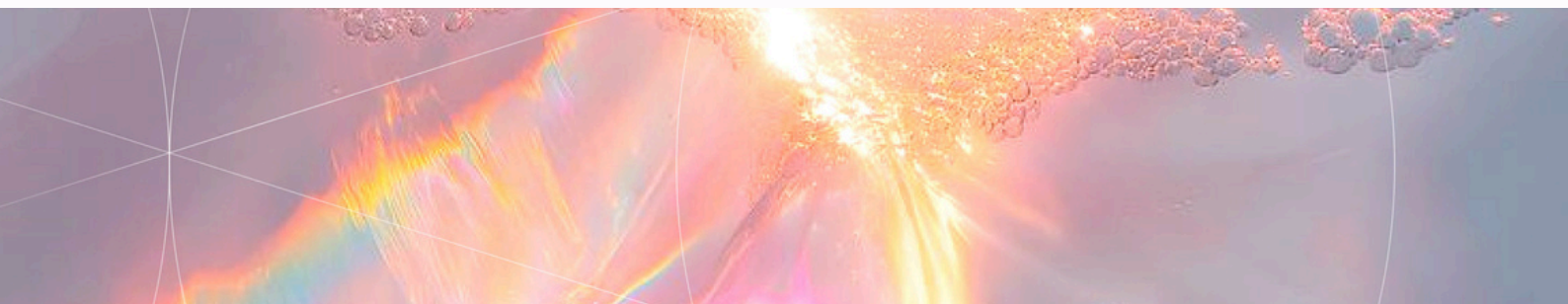
Root Clearing vs Light Body Recalibration

These two offerings work at different layers of the energetic architecture and are deeply complementary.

The *Light Body Recalibration* restores "the vessel" - the crystalline, multidimensional structure through which the soul's original blueprint is expressed. It works at the structural level of the light body itself, reweaving and restoring coherence across the architecture so that the original design can flow through it clearly. It is purely a frequency-based session: the client rests and I engage directly with the field.

Root Clearing works on the content held within that architecture - the specific threads of distortion, density and looping patterns that have anchored into the field, often across multiple timelines, and are creating interference in the present. It is conversational and collaborative in nature, guided at every step by the intelligence of the client's field.

A Light Body Recalibration may naturally catalyse the readiness for Root Clearing - as the vessel comes into greater coherence, what has been obscured within the field can rise to the surface for release. Both sessions support the soul's return to its original design, approached from different entry points.



Guided Sacred Ceremony

A multidimensional journey for remembrance, recalibration and activation using guided plant medicine and light technology

What is the Guided Sacred Ceremony?

Truth cannot be described or explained to you, it can only be experienced. Once triggered, it settles inside of you. It awakens within you.

The Guided Sacred Ceremony is a private, one-on-one ceremonial container held within a precise, multidimensional frequency corridor - a distortion-free space through which we traverse your energetic architecture together, allowing you to experience the truth of who you are.

This is not a recreational experience. It is a *journey within your own architecture* designed to support deep remembrance, energetic recalibration and soul alignment.

The ceremony weaves together *the intelligence of plant medicine with the light technology* encoded within my field. The medicine opens perception and awareness, while the ceremonial field - generated and stabilised through my own multidimensional architecture - provides structure, coherence, and safety for the process to unfold.

This space is modulated in real time, responding to your readiness and the intelligence of your field.

Each ceremony is *unique and responsive* - guided by your soul's readiness, your nervous system capacity and the intelligence of your energetic architecture. I do not impose outcomes. I architect the field in which truth becomes accessible. Rather than forcing peak experiences, this work allows what is true to emerge organically and what is no longer aligned to dissolve.

This is not about seeking visions or escape. It is about *returning to coherence, embodiment and soul truth* - and allowing your system to remember how to function from it's original design.

The Ceremony Structure

Each Guided Sacred Ceremony is held as a private, overnight ceremonial container, allowing the work to unfold with depth, safety and integration.

- **Total Duration:** ~18–20 hours (full overnight experience)
- **Location:** In-person (Cape Town or Bali)
- **Ceremony Length:** Approximately 5 hours
- **Preparation:** Required at least 5 days prior

The Impact

Each ceremony is unique and co-created with the intelligence of your field. Client experiences include:

- Profound energetic and emotional release - a felt dissolution of what has been held for lifetimes
- Crystalline clarity, deep inner stillness and a renewed sense of alignment with purpose
- A fundamental shift in how they relate to themselves - beyond identity, conditioning or story
- Access to soul memories, timelines and aspects of self previously beyond reach
- Reconnection with soul or galactic lineages and a restored sense of origin and belonging
- Activation of dormant codes, gifts and capacities

The ceremony does not produce the same experience twice. What arises is always in precise service to the soul's readiness in that moment.

Who This Is For:

This ceremony is for souls at a genuine threshold - not seeking an experience, but ready to meet truth. This may be for you if:

- You're at a significant turning point, initiation or transition in your life and feel called to mark and meet it consciously
- You're ready to move beyond healing into deeper remembrance — to stop managing what is unresolved and allow it to transmute
- You carry ancestral, karmic or collective imprints you are ready to dissolve at the source
- You feel a pull toward your larger purpose, contribution or soul-aligned path and want to access it from a place of clarity and embodiment
- You're ready to reweave your energetic architecture and reclaim the gifts and capacities that have been dormant
- You identify as a lightworker, sensitive, intuitive or starseed who is actively remembering their role in this time

Integration

Integration is its own journey, and it begins the morning after the ceremony.

The morning integration session, light breakfast and closing ritual are built into the container precisely because what's accessed in ceremony needs to be met, grounded and anchored before you re-enter your life.

In the days and weeks that follow, you may notice continued unfolding - insights that deepen, patterns that dissolve, or a quiet but unmistakable reorientation in how you move through the world. Some of the most significant shifts arrive not in the ceremony itself but in the integration that follows.

You will receive integration guidance as part of the post-ceremony container.

Energetic Exchange

The Guided Sacred Ceremony is offered as a consciously held energetic exchange that reflects the depth of preparation, presence, precision and nervous system capacity required to facilitate this work with integrity.

This is not a transactional service, but a deeply personalised ceremonial container designed to support profound remembrance, recalibration and transformation within a carefully constructed field.

- **Private Ceremony for One Person:** \$1,444
- **Private Ceremony for Two People:** \$1,888

This container includes:

- Pre-ceremony consultation and readiness call
- Full energetic preparation and post-care guidance
- Personalised medicine and ceremonial preparation
- Guided plant medicine ceremony held within a stabilised multidimensional frequency field
- Overnight accommodation and light breakfast
- Post-ceremony nourishment and grounding support
- Morning integration, reflection and energetic sealing
- Two-week post-ceremony follow-up and integration check-in

The Journey Structure

01.

Pre-Journey Consultation

- 30-minute Zoom call
- Intention setting, readiness, and energetic check-in
- Ceremony preparation guidance

02.

Energetic Preparation (5 days Prior)

- Your side: Clean eating, reduced stimulation, nervous system regulation, energy field preparation through visualization
- My side: I tune into your field, receiving guidance around medicine dosage, music and energetic themes.

03.

Ceremony + Overnight Stay

- Grounding, opening ritual, and container setting
- Guided medicine journey in a curated sacred space
- Grounding raphé (if required)
- Post-journey nourishment and overnight rest

04.

Integration

- Light breakfast and reflective conversation
- Grounding and energy protection ritual
- Post-journey insights, soul messages, or guidance received
- Integration guidance
- 30-minute Zoom call 2 weeks post-ceremony

Combo: Light Body Recalibration + Guided Sacred Ceremony

A two-part initiation container for deep remembrance and embodied activation

Overview

This offering combines two complementary modalities - Light Body Recalibration and Guided Sacred Ceremony - into a *single, intentionally sequenced container*.

Together, these sessions create a stabilised and coherent foundation that supports deeper access, clearer perception and more precise activation during ceremony.

This is a highly personalised container designed for souls who feel ready to move beyond distortion and into fuller alignment with their original frequency, soul architecture and purpose.

Rather than approaching ceremony in isolation, this sequence allows your system to prepare, reorganise and integrate with greater safety and depth.

Structure

Session One: Light Body Recalibration (online)

Held *at least 3 days before* the ceremony, this session supports the recalibration of your energetic architecture, clearing distortion and restoring coherence across the light body. It prepares your system to hold higher frequencies with greater stability, clarity and self-regulation.

Session Two: Guided Sacred Ceremony (In-person)

With the foundation of the recalibration in place, the ceremony allows for deeper remembrance, activation and traversal through the field using guided plant medicine and light technology. The work moves beyond surface-level clearing into core-level truth, integration, and embodiment.

Energetic Exchange

This two-part initiation container is offered as a consciously held energetic exchange, reflecting the depth of preparation, precision, and presence required across both sessions.

- **Guided Sacred Ceremony + Light Body Recalibration (1 person):** \$1,555

This offering is intentionally limited to preserve energetic integrity and quality of presence.

Why This Combination is So Potent

This offering brings together two distinct yet complementary phases of the same initiation.

The *Light Body Recalibration* establishes coherence within your energetic architecture - clearing distortion, restoring stability and preparing your system to hold higher frequencies with greater safety and clarity.

When this foundation is in place, the *Guided Sacred Ceremony* can unfold with far greater depth and precision. Rather than navigating fragmentation or overwhelm, the ceremonial journey is met from a grounded, regulated and coherent state - allowing remembrance and activation to occur at a core level.

Together, these sessions create a stabilised arc:

- preparation and recalibration
- followed by deeper access, activation and embodiment

This sequencing supports a more integrated experience, reduces unnecessary intensity, and allows the work to land not just as insight, but as lived coherence within the body and field.

This is not about "more", it is about precision and intention.

A Note on Sovereignty & Responsibility

All of this work is a co-creation and honours your sovereignty.

You are not entering this container to be fixed, healed or led. You are choosing to meet yourself more fully, with honesty and presence, within a carefully held field.

By choosing to step into this work, you acknowledge and affirm your self-sovereignty. While I hold and stabilise the ceremonial and energetic architecture, your experience is guided by your own readiness, responsibility and inner intelligence. Nothing is forced and nothing is done to you.

You are responsible for your own preparation, integration and well-being. This includes tending to your body, honoring your emotional state and seeking additional support where needed. These sessions are not a replacement for medical or psychological care.

You confirm that you are in sound physical and mental health, and are capable of safely participating in deep energetic work.

This is a space of agency, trust and integrity.



THE
FREQUENCY
ARCHITECT