

SPACECUBE.

Changing the way
the world builds.

“The world has changed.
There is a growing demand
for a more versatile and
sustainable building solution.”

Jeremy Fisher - Founder SPACECUBE



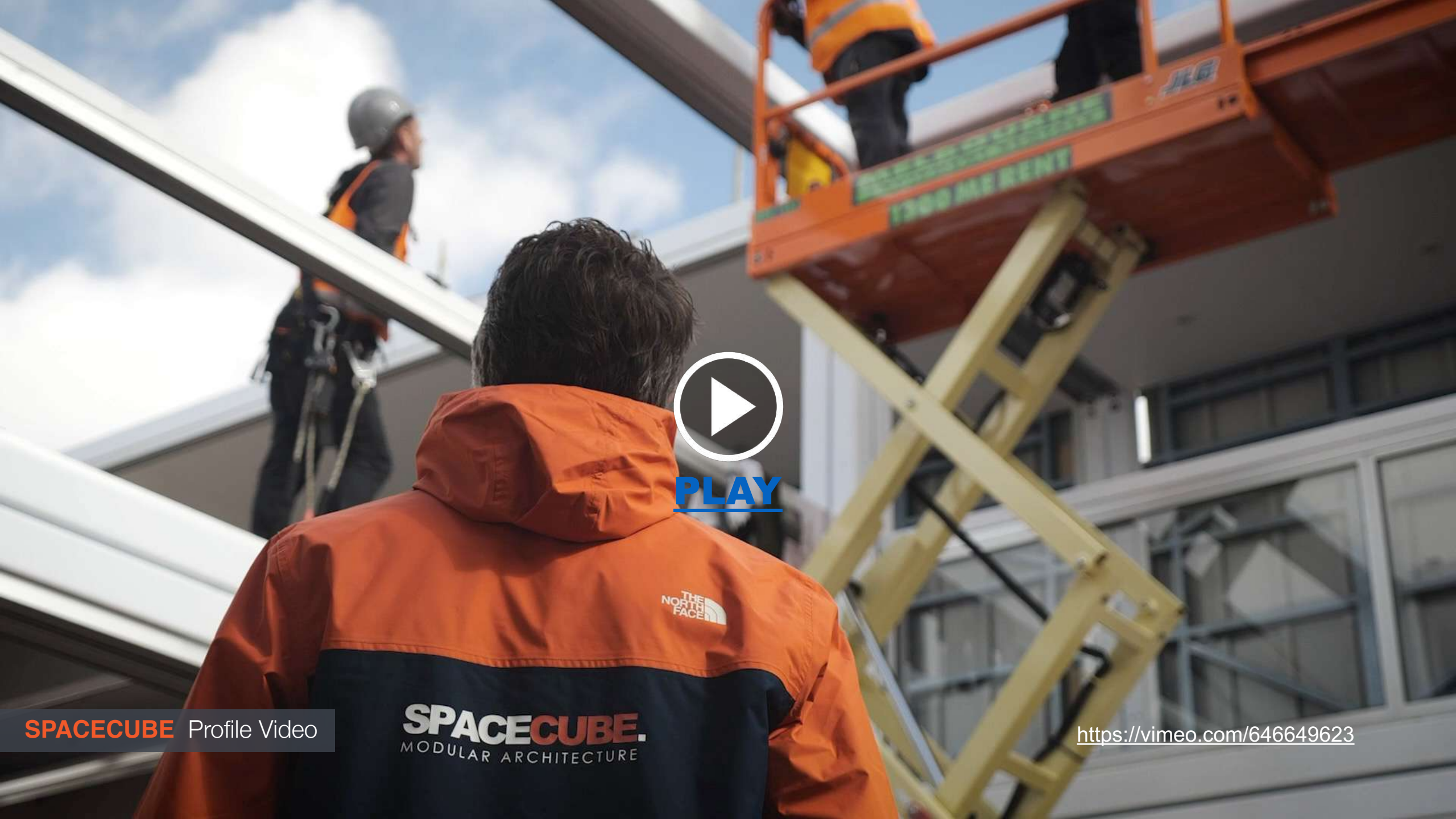
HOSPITALITY Formula 1 Grand Prix | Ferrari

The Spacecube Build System.

Scalable.

Sustainable.

Simpler.



PLAY

SPACECUBE Profile Video

SPACECUBE.
MODULAR ARCHITECTURE

<https://vimeo.com/646649623>

Why does our product exist?

With fast assembly, premium aesthetics, and environmental responsibility at the core, Spacecube provides adaptable, reusable structures that minimise waste while maximizing efficiency.



1.



2.



3.



4.



5.



6.



7.



8.



9.

<https://vimeo.com/159331609>

SPACECUBE is revolutionising the way the world builds.

By delivering premium, scalable, and sustainable modular solutions, SPACECUBE transforms traditional construction with our innovative SPACECUBE Build System®. Our systems are designed with elegant simplicity for versatility, providing adaptable, reusable, and environmentally responsible spaces that meet the highest standards of functionality and aesthetics. From global events to permanent infrastructure, SPACECUBE empowers businesses to build smarter and faster while reducing waste. Not all modular solutions are created equal. In a marketplace crowded with imitators, genuine SPACECUBE represents the original, cutting-edge system trusted by clients worldwide.

Scalable.
Sustainable.
Simpler.



G.H. MUMM

HOSPITALITY Melbourne Cup Carnival | G.H. Mumm





Premium Temporary Infrastructure.

At SPACECUBE, we don't just build structures; we create transformative experiences. Our clients trust us for our passion, creativity, and unwavering commitment to their success. Whether it's a bespoke retail activation for brands like Google, Meta, Porsche, and Marc Jacobs, or a precision-engineered multi-level facility at the Formula 1 Grand Prix, SPACECUBE ensures every project reflects our high standards.



ACTIVATION Covent Garden | Jo Malone

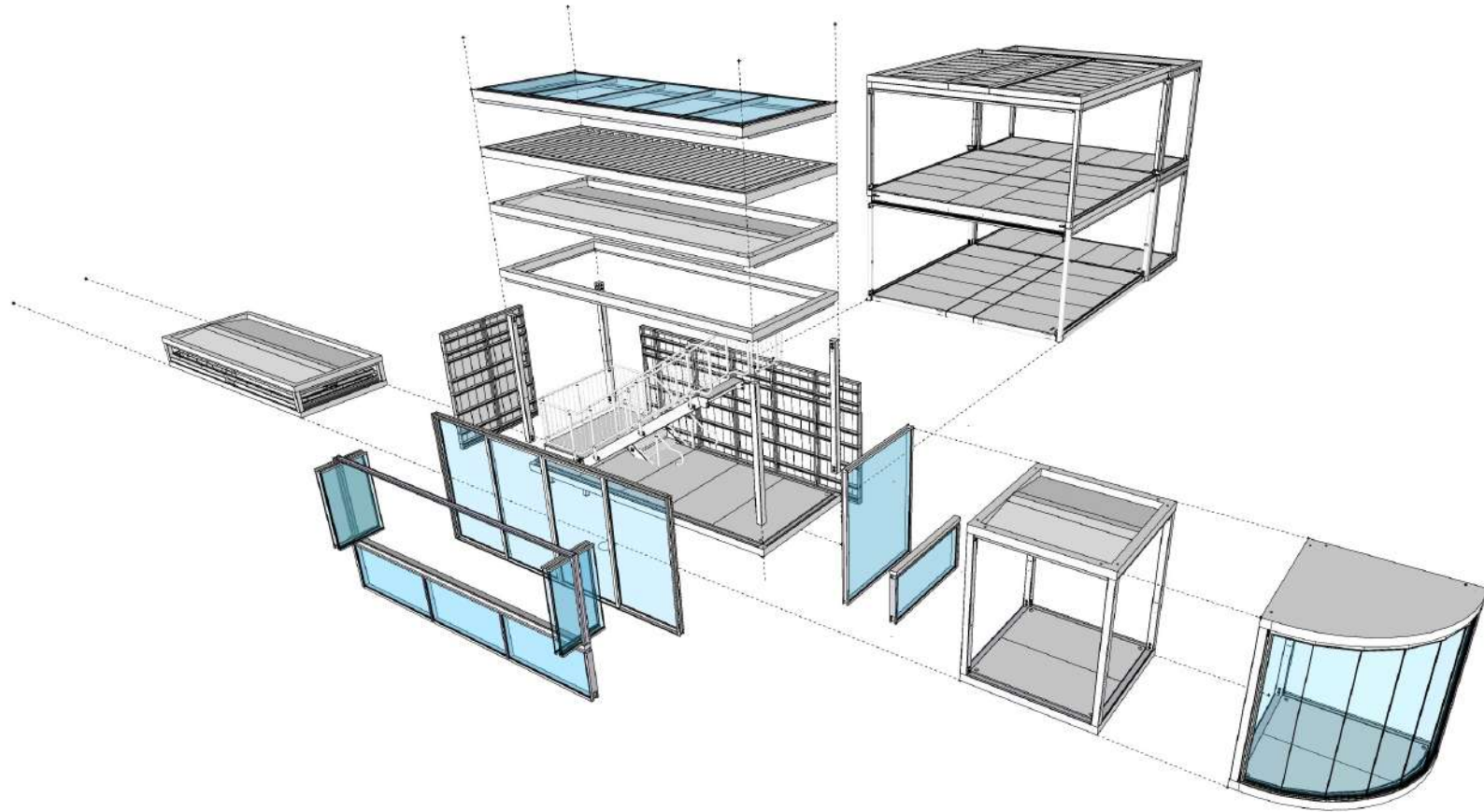


EVENTS & BRAND ACTIVATIONS Brand Activations

From Vision to Innovation.

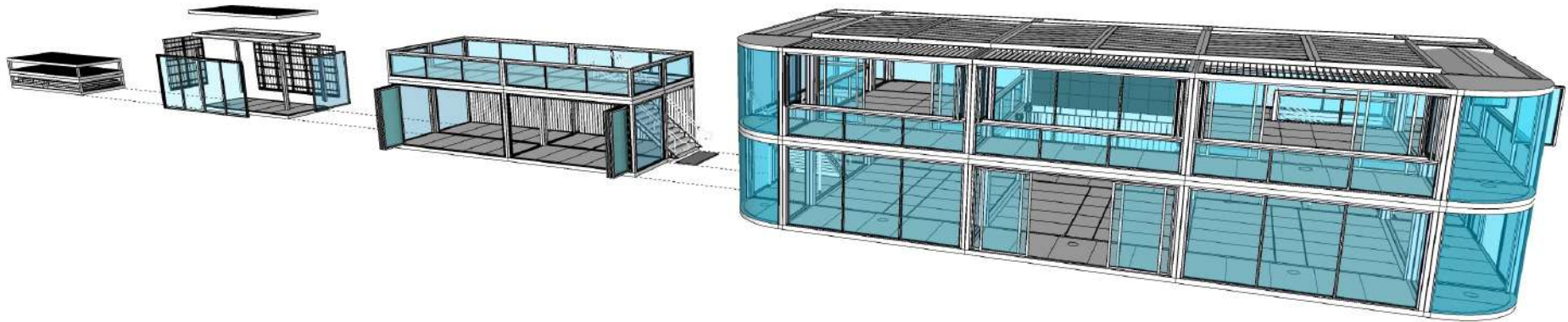
The SPACECUBE Build System® is a game-changer, combining features like flat-packable designs, corner spigots for quick assembly, integrated stormwater management, and striking aesthetics. Over the last decade, SPACECUBE has become the trusted choice for premium modular solutions across industries.

MODULAR COMPONENTS.



Scalable.
Sustainable.
Simpler.

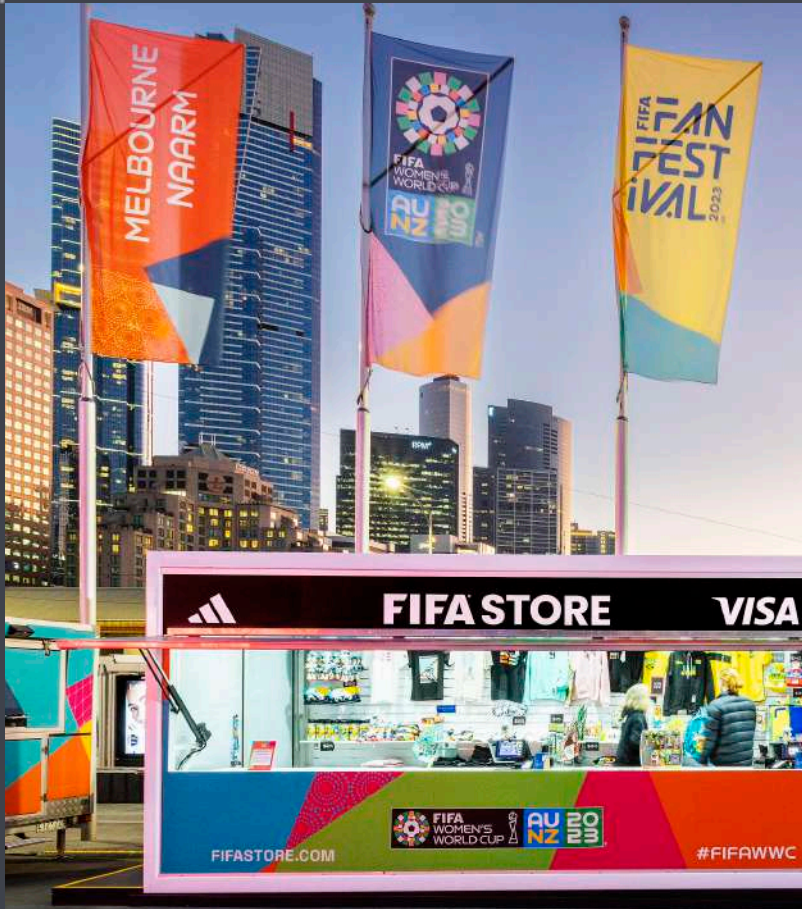
SCALABLE INFRASTRUCTURE.



Scalable.
Sustainable.
Simpler.



RETAIL FIFA Women's World Cup



SPACECUBE represents the original, cutting-edge system trusted by clients worldwide.

With SPACECUBE, you're not just getting a modular system—you're getting proven innovation, premium quality, and world-class service from the team that redefined the industry.



LPL skyCITY

ESPORTS STUDIO

SOMEONE
MUST WIN
THE ASTON
MARTIN.
YOU ARE
SOMEONE.

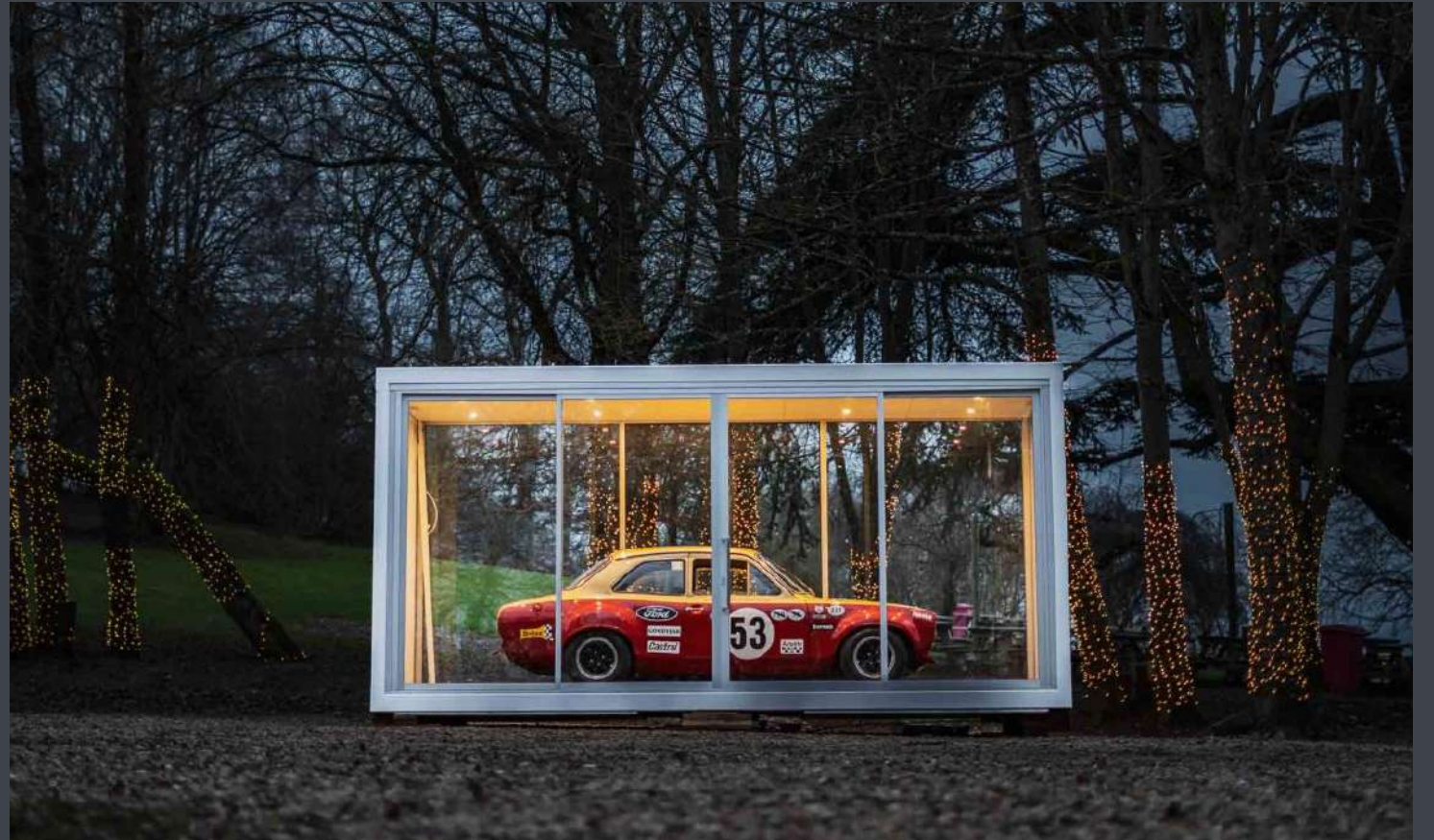


sky
CITY
CASINO



#ASTONMARTINAUCKLAN
@AstonMartinNZ #AstonMartinNZ

CAR DISPLAY Sky City | Aston Martin



Sustainability.

Sustainability is at the heart of SPACECUBE. From reducing construction waste to designing reusable and reconfigurable systems, we help clients achieve environmental goals without compromise.

90% of build components being totally reusable.

60% less construction materials compared to status quo.

32% of materials re-used for other builds.

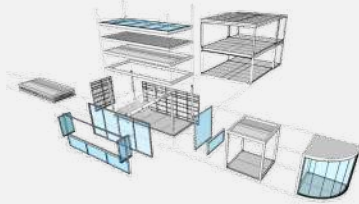
5% sent to waste diversion program.



SPACECUBE BUILD SYSTEM MULTIPLE LIVES.

Scalable.
Sustainable.
Simpler.

SPACECUBE BUILD SYSTEM



FIRST LIFE



Brand Activations

Major Events



Hospitality /
Outdoor Dining



SECOND LIFE



Fan Experience

Disaster Relief



Essential Government Services



THIRD LIFE



Accommodation

Property Display Suites



Offices /
Operational





DISPLAY Mirvac | Smiths Lane



Revolutionising the Future of Building.

With over 104 projects completed in Australia and 31 in the UK in the last 12 months, SPACECUBE has deployed for major installations like the 540 sqm modular build at the COTA F1 in Texas, a total of 4,648sqm at the Australian Open, 5,848sqm at the F1 Australian Grand Prix and installations for Alfred Health and Monash Health.



OUTDOOR DINING RACV



COMMERCIAL Outdoor Dining



VINEYARDS & HOSPITALITY Penfolds | Kalimna



VENUE FUNCTION SPACE Vineyards & Hospitality

Understanding the Environmental Impact.

SPACECUBE has sustainability and ESG at its forefront from procurement to delivery, to this effect SPACECUBE has developed with external specialists our own unique “Carbon and Waste Calculator”. This data output is provided as an estimate prior to or fully evaluated post event to clients to understand the environmental impact of our builds.



BROADCAST Formula 1 Grand Prix | Network 10



BROADCASTING Studios & Major Event Facilities

Quick Deployment for Healthcare, Natural Disasters and Emergency Accommodation.

Rapid and reliable infrastructure solutions for communities and healthcare providers in need. We minimise your response time and provide urgent medical care or accommodation with premium turn-key modular infrastructure solutions.



PLAY

SPACECUBE Monash Health

<https://vimeo.com/423461278>



HEALTHCARE Monash Health | Resus Ward



HEALTHCARE RESUS, Morgue and Medical Centres



SPACECUBE
QR CODE

RDA/08

RAPID DEPLOYMENT ACCOM 1,2 & 3 Bedroom Dwellings

RAPID DEPLOYMENT ACCOMMODATION 1&2 BEDROOM CONCEPTS

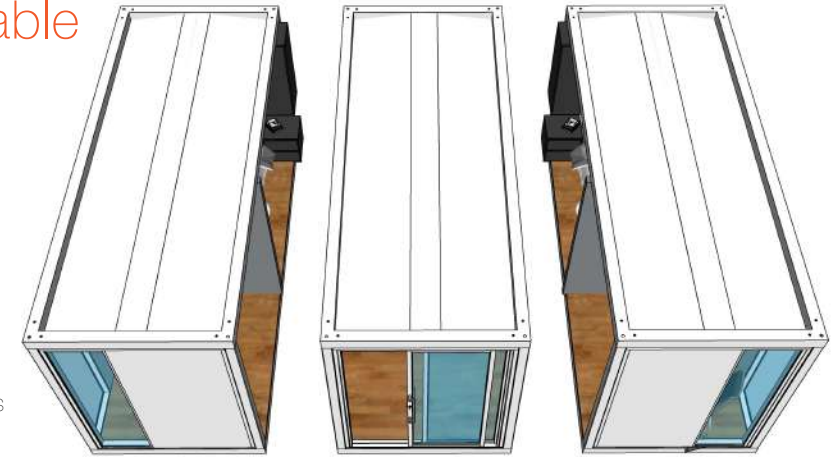
1 Bed - Exploded View



Notes:

- 2 x (6m x 2.4m x 3m) modules
- Bathroom
- Kitchenette
- Open Living

2 Bed - Joinable



Notes:

- 3 x (6m x 2.4m x 3m) modules
- Bathroom
- Kitchenette
- Open Living

1 Bed - Internal View



Notes:

- 2 x (6m x 2.4m x 3m) modules
- Bathroom
- Kitchenette
- Open Living

2 Bed - Internal View



Notes:

- 3 x (6m x 2.4m x 3m) modules
- Bathroom
- Kitchenette
- Open Living



CUSTOMER FEEDBACK.

DISASTER RELIEF

“What an amazing effort from Spacecube and Monash Health. This space allows us to provide the best patient experience and excellence in care we strive for at Monash Health. Thank you from the nurses on the floor Resus. We love it!!

Kerry Georgiou, Registered Nurse Emergency Department at Monash Health

BRAND ACTIVATION

“Working with Spacecube on the LEGO Pit Shop at F1 Melbourne was awesome. Fergus and El were absolute legends—super professional, efficient, and a fantastic extension of Rockstar Management. Their expertise made the whole setup smooth, and the space looked incredible while being super functional for the store. They handled last-minute changes like pros, tackled any unexpected hiccups onsite, and kept things positive and solution-focused the whole way through. Their dedication really helped bring the activation to life, making it an epic experience for fans. Looking forward to working with Spacecube, El and Fergus again soon!”

Kira Patchett - Producer at Rockstar Agency

PROPERTY

“We had a fantastic experience working with the Spacecube team. They are professional and design led, ensuring a high-quality product which was well received by our customers. The speed of delivery was outstanding, and we are exceptionally pleased with the outcome.”

Andrew Cartledge – Development Manager, Mirvac

EVENTS & ACTIVATIONS

“Appreciate you and the team and wanted to make special mention to Fergus as he, as always, was fantastic to work with. Extremely accommodating to make things work between yourselves and our build team, knowledgeable and ever present, checking in every day of the build and ensuring required fixes were addressed in a timely manner.”

Kelly McCarthy - Head of Experiential Production at Bastion

SPACECUBE.
Not Ordinary.

AUSTRALIA + NEW ZEALAND + USA + UK & EUROPE

www.spacecube.com