

Permanent Magnet Series

The Future of Compressed Air

Permanent Magnet Motor

- IE4 Super Premium Efficiency standard for energy savings and top-tier performance
- Liquid cooled motor and airend for enhanced thermal management and durability
- IP65 protection against dust and moisture for reliable operation in harsh conditions
- Certified to UL Standards for safety and performance

Rotary Screw Airend

- New improved rotor profile designed for maximum efficiency and durability
- Mounted directly to stator for zero power loss— no bearing, belts, or couplers
- Oversized rotors keep rpm at 3000 or less

Variable Speed Drive

- Integrated flux vector inverter with UL certification
- Wide voltage design meets C3 and EMC standards
- Built-in DC reactor ensures smooth and energy-efficient operation

Cool, Quiet, and Durable

- 50% oversized air/oil cooler designed to operate in ambient temperatures up to 110°F at a full 100% duty cycle
- Whisper-quiet thermostatically controlled cooling fans maintaining optimal temperatures between 175°F–195°F
- Robust steel enclosure with sound-dampening panels and integrated fork pockets, made to withstand the harshest conditions

Smarter in Every Sense

- A 7-inch full-color touch screen display keeps you informed with maintenance schedules and performance insights
- See the big picture with real-time stats, flow diagrams, and historical charts
- Designed for everyone, everywhere—thanks to multi-language support and RS485 connectivity for system integration



Industrial Gold

Quality Air Compressors at a Great Price.

industrialgold.com ■ 1-800-531-9656 ■ Fax 972-352-6364

© Industrial Gold 06-2025



Scan to visit our website



Best In Class

Made with the Highest Quality Components Available



Heavy-Duty Nano Scale Inlet Filter

- 99.9% removal efficiency at 0.3 micron
- Pressure drop indicator



Smart Controls

- 7-inch full color touchscreen display
- Real-time operation, maintenance, and alarm information
- Integrate up to 8 compressors in 1 complete system



Innovative Flux Vector Inverter

- Intelligent PID flow regulation
- Constant pressure control
- Robust enclosure with independent cooling system



Classic Cooler Design

- 50% oversized for high ambient temperatures
- Anti-corrosive coating
- Easy access for maintenance



Heavy Duty Oil Filters

- Oil particles can be controlled at .1 micron
- High efficiency contaminant removal ensures a smooth and well lubricated system



Oil Sump Separator

- Designed for maximum efficiency and easy maintenance
- Oil carry-over less than 3ppm
- System pressure loss less than .02mpa



All Steel Internal Pipe System

- Increased longevity and decreased maintenance
- Less pipe friction loss



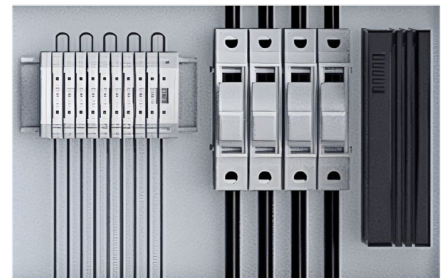
Cooling Fan

- VSD control
- High capacity, low power consumption, and low noise level



Optimized Inlet Valve

- Large suction area with 700mmhg vacuum degree
- 100% aluminum
- Maintenance free design

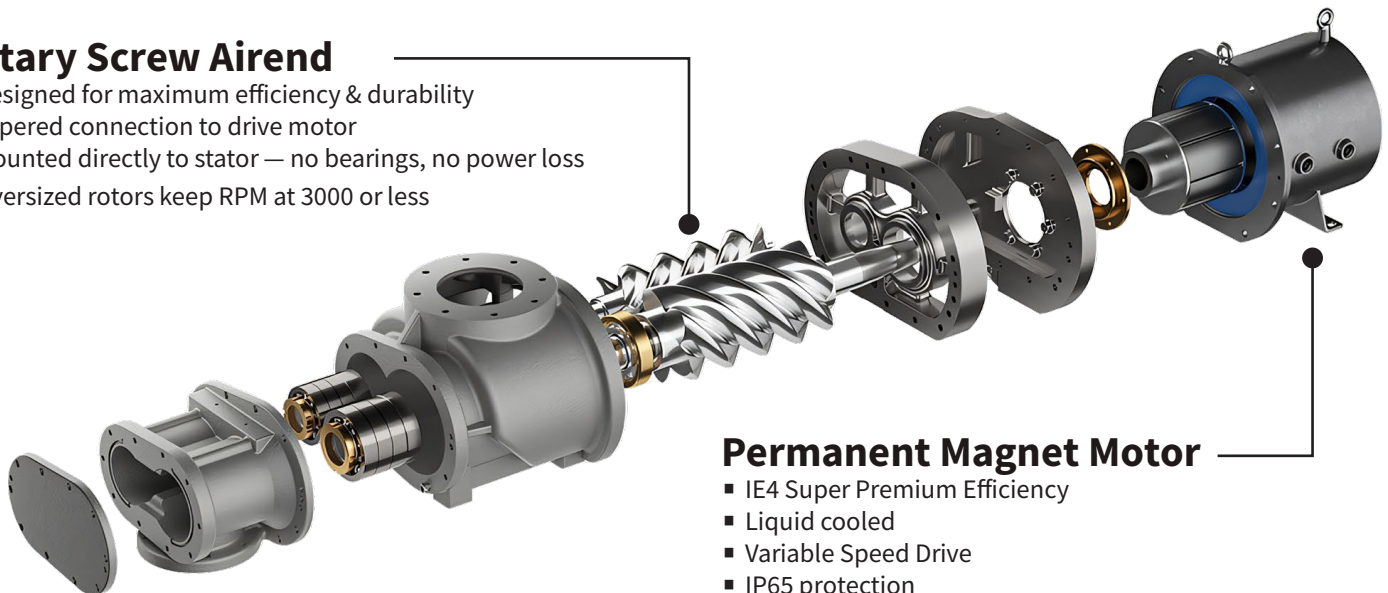


Electrical Cabinet

- Simple and reliable electrical components
- Built in main power shut-off switch

Rotary Screw Airend

- Designed for maximum efficiency & durability
- Tapered connection to drive motor
- Mounted directly to stator — no bearings, no power loss
- Oversized rotors keep RPM at 3000 or less

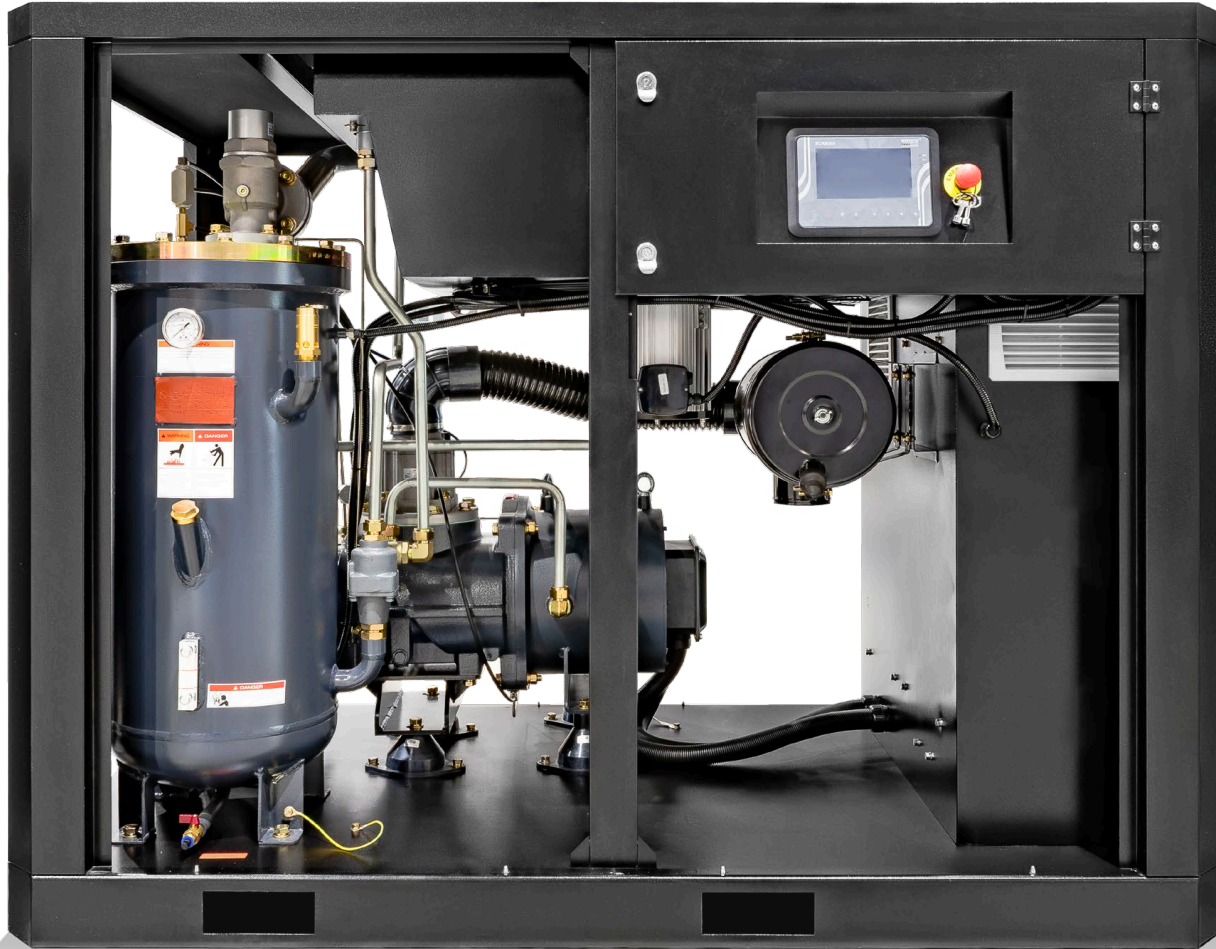


Permanent Magnet Motor

- IE4 Super Premium Efficiency
- Liquid cooled
- Variable Speed Drive
- IP65 protection

Permanent Magnet Series

Available from 10 to 150 Horsepower



Model	HP	CFM @ 125 PSI	CFM @ 150 PSI	Voltage	dBA	Weight	Length	Width	Height
R10ENC-PM	10	39	34	208-230-460-3	65±3	838	40	40	30
R15ENC-PM	15	62	53	208-230-460-3	67±3	992	46	32	43
R20ENC-PM	20	85	71	208-230-460-3	67±3	1058	46	32	43
R30ENC-PM	30	124	109	208-230-460-3	67±3	1098	50	35	55
R50ENC-PM	50	215	187	208-230-460-3	72±3	1499	40	55	60
R75ENC-PM	75	342	320	208-230-460-3	75±3	2976	47	79	61
R100ENC-PM	100	459	406	208-230-460-3	77±3	3197	47	79	61
R125ENC-PM2	125	665	577	208-230-460-3	78±3	4730	59	90	77
R150ENC-PM2	150	847	741	208-230-460-3	78±3	6285	65	103	81

To make package "CRD" configuration add -CRD to the end of the model number. All dimensions are in inches, weight is in pounds