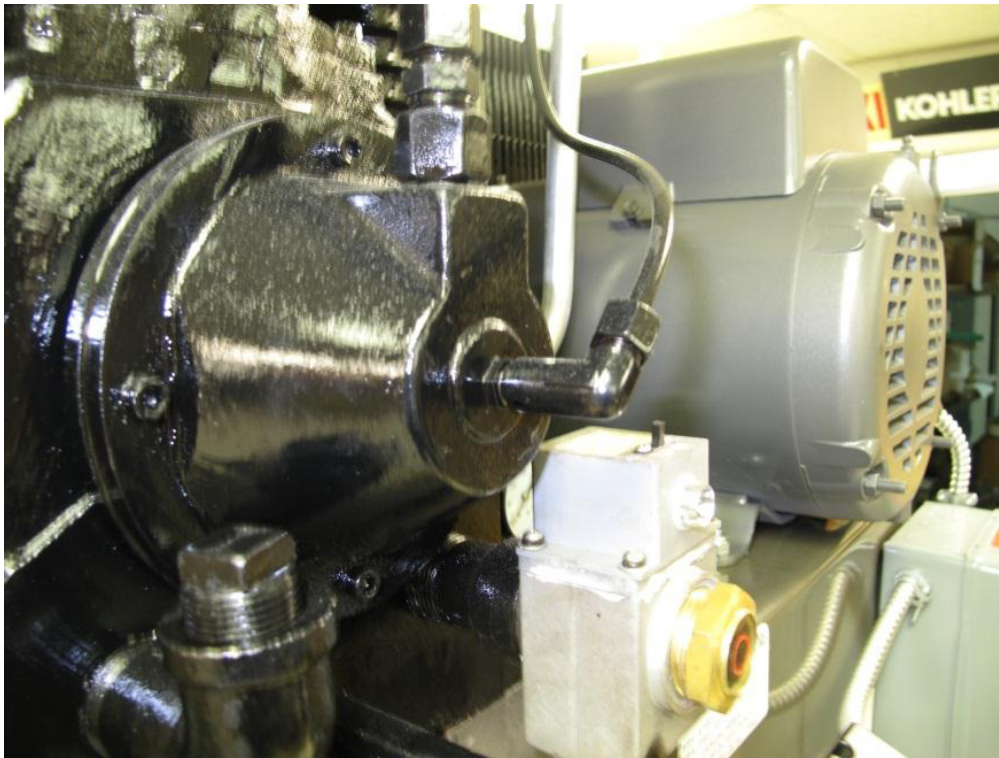


Replacing Centrifugal Unloader Elbow



Notice: Notice: Always make sure the power is off to compressor and contact the manufacturer for advice.

Call 800-531-9656 to find a local trained air compressor service technician.

WARNING: To avoid personal injury, always shut OFF the main power supply and disconnects to the compressor, relieve all air pressure from the system, and check electrical system with electrical probe before starting any service or maintenance on the compressor.

Industrial Gold

Quality Air Compressors at a Great Price.

industrialgold.com ■ 1-800-531-9656 ■ Fax 972-352-6364

© Industrial Gold 04-2026



Scan to visit our website



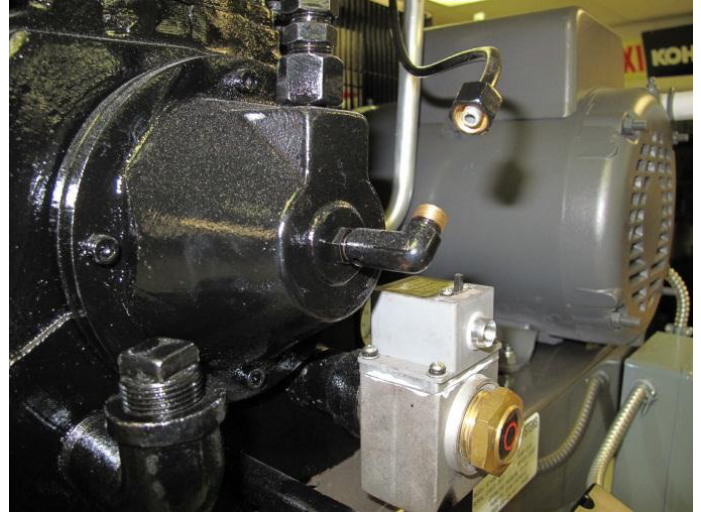
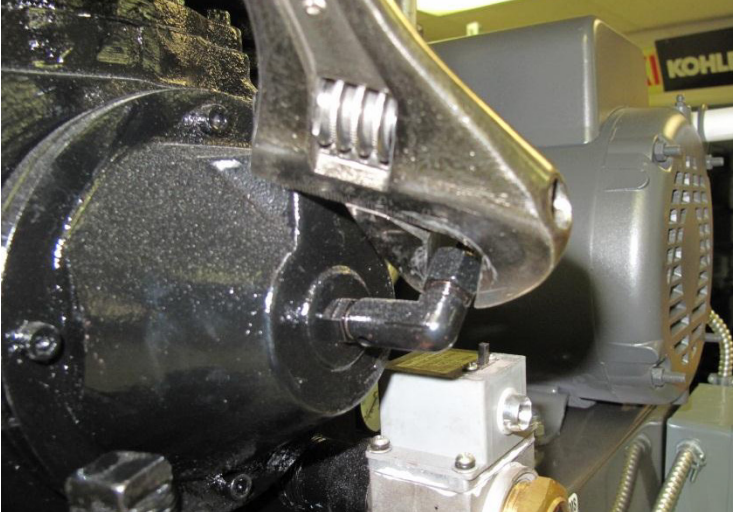
Step 1

Before changing Magnetic starter and power is off.

Warning: Injury can occur if this is not done.

Step 2

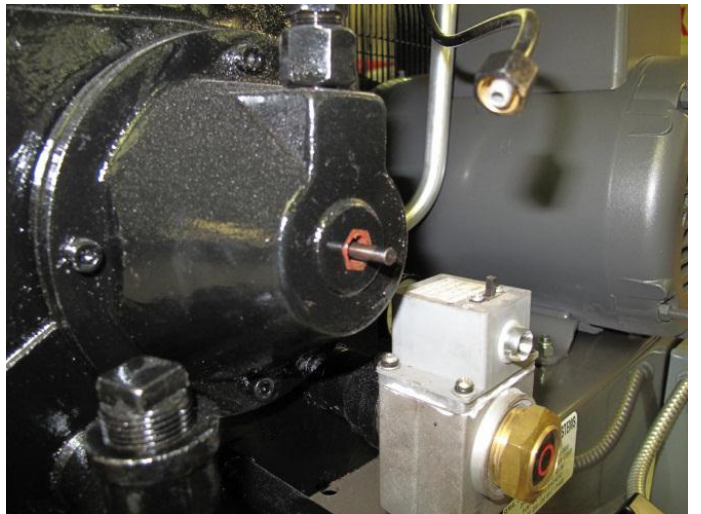
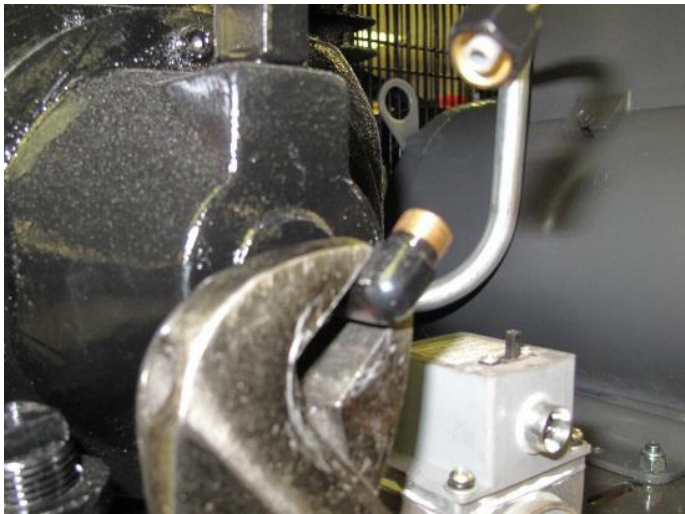
Remove air line from unloader elbow.



Unloader air line removed.

Step 3

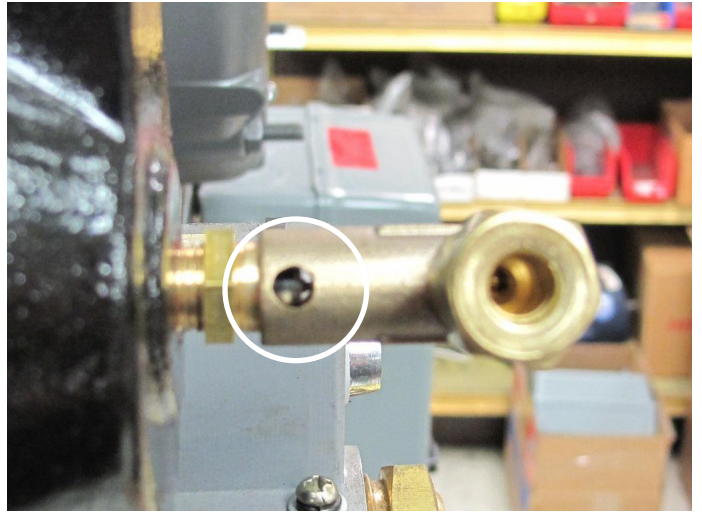
Remove old unloader elbow.



Unloader elbow removed. Centrifugal unloader pin visible in stationary position.

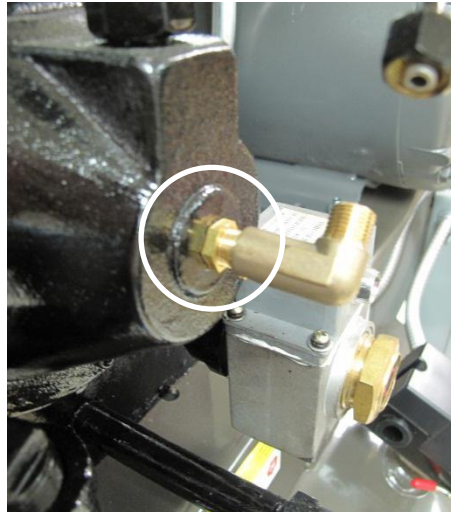
Step 5

New Unloader elbow installed. Centrifugal unloader pin depressing elbow pin 1/8 inch in stationary position.



Step 6

Lock nut installed against unloader cone.



Step 7

New unloader elbow installed in proper position with unloader line installed.





Industrial Gold

600 S 2nd Ave
Mansfield, TX, 76063

1-800-531-9656

Fax 972-352-6364

Quality Air Compressors at a Great Price.