

Furnas Style Pressure Switch Adjustment



NOTICE: Before adjusting pressure switch, contact the manufacturer to make sure setting will not over amp compressor drive motor and for advice.

Call 800-531-9656 to find a local trained air compressor service technician.

WARNING: To avoid personal injury, always shut OFF the main power supply and disconnects to the compressor, relive all air pressure from the system, and check electrical system with electrical probe before starting any service or maintenance on the compressor.

Industrial Gold

Quality Air Compressors at a Great Price.

industrialgold.com ■ 1-800-531-9656 ■ Fax 972-352-6364

© Industrial Gold 04-2026



Scan to visit our website

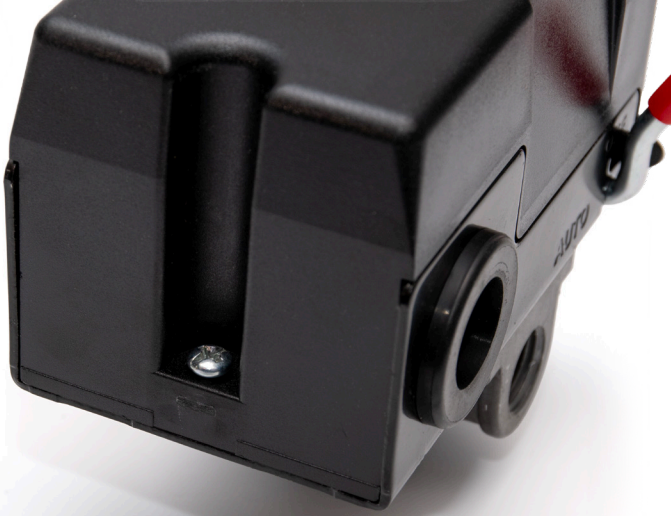


Step 1

Shut off the main power supply.

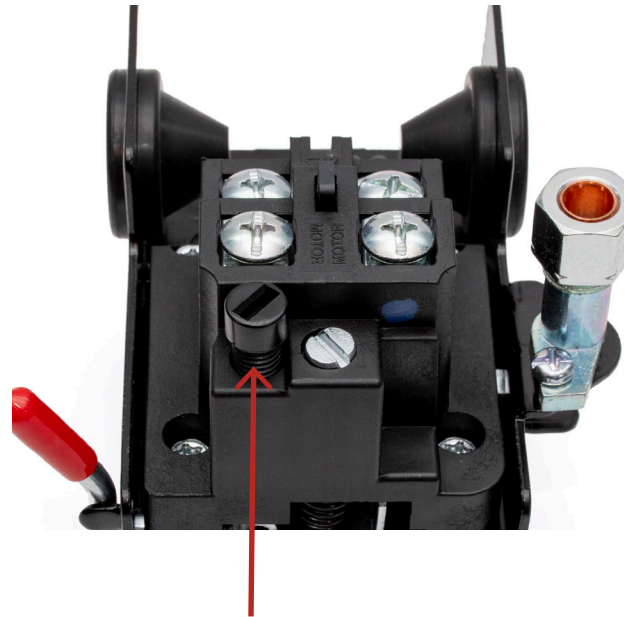
Step 2

Unscrew hold down screw at the top from the pressure switch cover.
Remove the pressure switch cover.



Step 3

Locate the pressure adjustment screw.
The screw is circled in green in the image below.

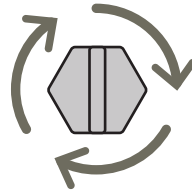
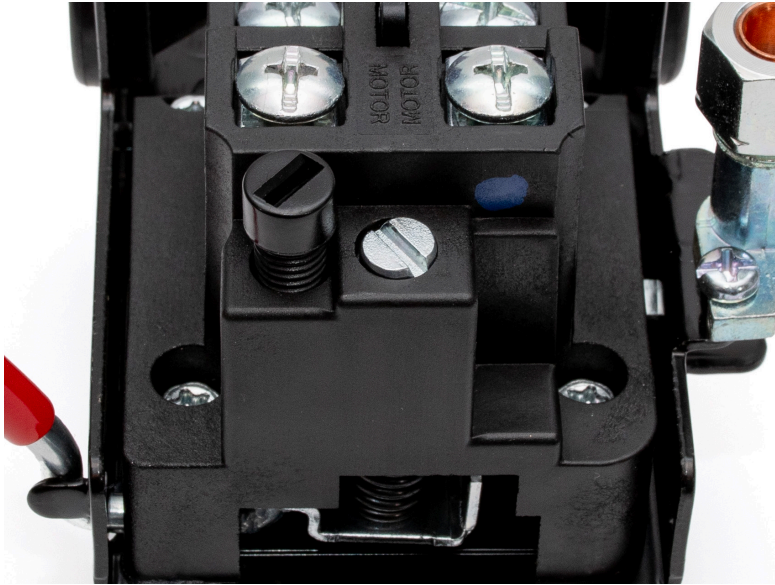


Warning: DO NOT adjust or tamper with the black screw left of the pressure adjustment screw.

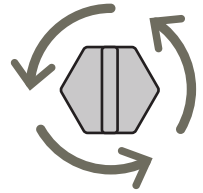
Step 4

Adjust pressure set screw ¼ clockwise to raise pressure or ¼ counterclockwise to lower pressure.

Warning: Do not adjust more than ¼ turn without checking to see what the new operating pressure of the compressor is.



Turn pressure set screw **clockwise** to **raise pressure**.



Turn pressure set screw **counterclockwise** to **decrease pressure**.

Step 4

Place cover back on to the pressure switch and tighten the hold down screw back on.





Industrial Gold

600 S 2nd Ave
Mansfield, TX, 76063

1-800-531-9656

Fax 972-352-6364

Quality Air Compressors at a Great Price.