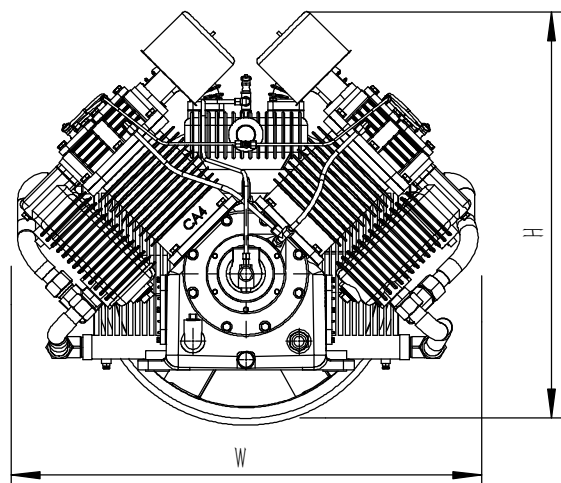
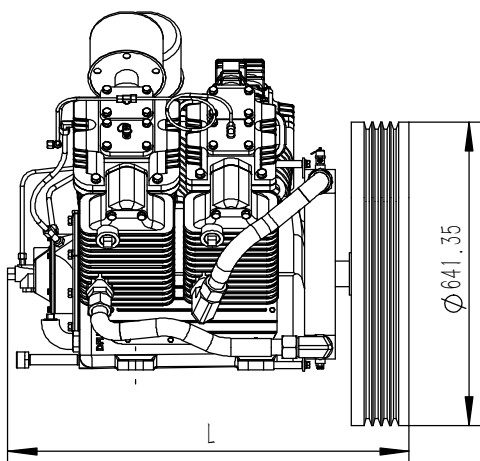


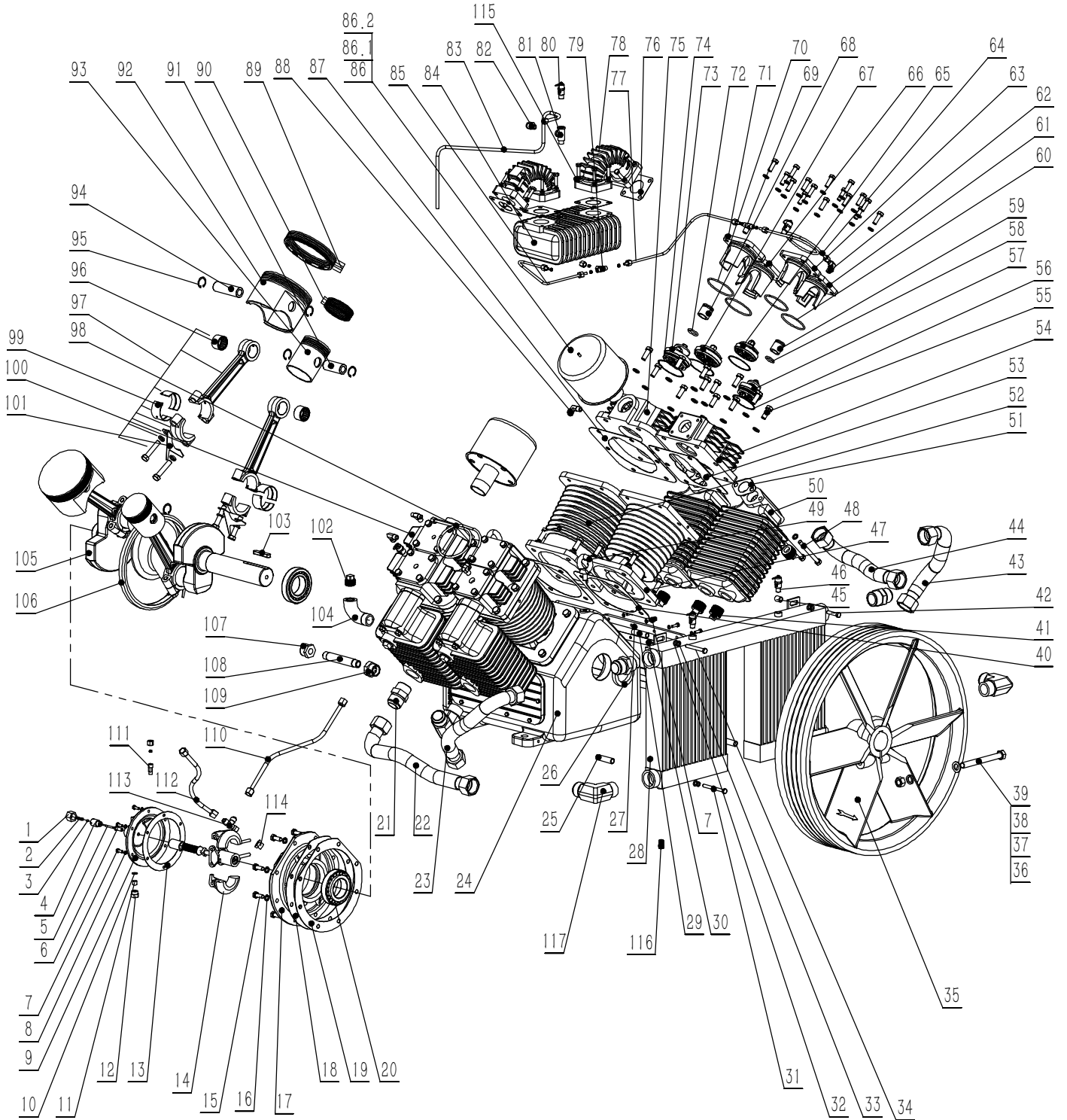
Dimensions		
A	inch	16
	mm	406.4
B	inch	10
	mm	254
C	inch	13.1
	mm	334
L	inch	33.8
	mm	858
W	inch	39.4
	mm	1000
H	inch	33.8
	mm	858.5
Weight	lb	880
	kg	399

CA4 Technical Data		
Motor	HP	25/30
	KW	18.5/22
Air Delivered	ACFM	90.8/101.6
	m ³ /min	2.57/2.88
Pressure	PSI	175
	Bar	12.25
Speed	RPM	670/750
Cylinders Qty	PCS	4
Bore	inch	6.1/3.23
	mm	155/82
Stroke	inch	5
	mm	127
Flywheel Dia	inch	25.25
	mm	641.35
Groove Type		B



MODEL CA4 TWO STAGE AIR COMPRESSOR PUMP
800-531-9656

www.IndustrialGold.com



MODEL CA4 TWO STAGE AIR COMPRESSOR PUMP
800-531-9656
www.IndustrialGold.com



PARTS LIST			
ITEM	PARTS#	DESCRIPTION	QTY
1	38184	UNLOADER VALVE RETAINER NUT	1
2	38194	UNLOADER VALVE RETURN SPRING	1
3	9325	BALL-1/4"DIA. C 6.35	1
4	38185	UNLOADER VAVLE RETAINER	1
5	38182	UNLOADER VAVLE STEM	1
6	38188	UNLOADER VAVLE GUIDE	1
7	1551001	HEX HEAD BOLT M6X25	26
8	1551002	LOCKWASHER ϕ 6	26
9	38174	UNLOADER HOUSING	1
10	38192	FILTER SCREEM	2
11	38193	FELT	1
12	38178	FILTER NUT NPT3/8	1
13	38267	GASKET-CENTRIFUGAL UNLOADER HOUSING	1
14	1551008	CENTRIFUGAL UNLOADER ASSEMBLY	1
15	1551009	HEX HEAD BOLT M10X30	40
16	1551010	LOCKWASHER ϕ 10	46
17	1551011	END COVER	1
18	1551012	GASKET-END COVER	1
19	1551013	ADJUSTMENT SHIM-END COVER	2
20	1551014	BEARING 32211	2
21	1551015	TUBING CONNECTOR NPT1-1/4xJIC1-1/4	5
22	1551016	BRAIDED SS FLEX LINE 16.7"	1
23	1551017	BRAIDED SS FLEX LINE 14"	1
24	1551018	CRANKCASE	1
25	1551019	STEEL TUBE ϕ 15x3x60	2
26	8059	OIL SEAL 55x75x12	1
27	1551021	SIDE COVER	2
28	1551022	ALUMINUM FIN INTERCOOLER	1
29	1551023	STEEL TUBE ϕ 15x3x55	1
30	1551024	GASKET-SIDE COVER	2
31	1551026	HEX HEAD BOLT M8X80	2
32	1551027	PLAIN WASHER ϕ 8	4
33	1551028	LOCKWASHER ϕ 8	4
34	1551029	HEX HEAD BOLT M8X70	1
35	1551030	FLYWHEEL	1

MODEL CA4 TWO STAGE AIR COMPRESSOR PUMP
800-531-9656

www.IndustrialGold.com



PARTS LIST			
ITEM	PARTS#	DESCRIPTION	QTY
36	1551031	WASHER ϕ 12	2
37	1551032	LOCKWASHER ϕ 12	2
38	1551033	HEX HEAD BOLT M12X80	2
39	155034	HEX NUT M12	2
40	1551037	GASKET-CYLINDER	4
41	4127	PLUG NPT1	12
42	1551039	HEX HEAD BOLT M8X35	8
43	1551035	BRAIDED SS FLEX LINE 12"	1
44	1551036	BRAIDED SS FLEX LINE 12"	1
45	1551040	STEEL TUBE ϕ 15x3x17	1
46	722006	75PSI SAFETY VALVE ASME	4
47	1551042	CYLINDER-H.P.	2
48	1551043	HEX HEAD BOLT M10X130	8
49	1551044	EYEBOLT M12	2
50	1551045	CAST IRON INTERCOOLER	4
51	1551046	GASKET-CAST IRON INTERCOOLER	4
52	1551047	CYLINDER-L.P.	2
53	1551048	GASKET-CYLINDER HEAD H.P.	2
54	1551049	CYLINDER HEAD-H.P.	2
55	1551050	HEX HEAD BOLT M12X40	32
56	8424	HP VALVE COPPER GASKET CA4 ϕ 70X ϕ 65X0.8	4
57	1551052	H.P. INLET VALVE	2
58	431042	HP INLET UNLOADER PLUNGER "O" RING CA4 ϕ 21x ϕ 3.55	2
59	431041	H.P. INLET UNLOADER PLUNGER	2
60	8446	"O" RING-COVER 69x3.55	4
61	1551056	HOLD DOWN COVER-HP INLE	2
62	1551057	1/8PT ELOBOW-UNLOADER TUBE	2
63	1551058	HOLD DOWN COVER-HP OUTLET CA4	2
64	1551059	INLET UNLOADER TUBE ϕ 6*275	1
65	1551060	HP OUTLET VALVE	2
66	1551061	HOLD DOWN COVER-LP OUTLET CA4	2
67	1551062	LP OUTLET VALVE	2
68	1551063	LP INLET UNLOADER PLUNGER CA4	2
69	42384	TEE-UNLOADER TUBE 69	2

MODEL CA4 TWO STAGE AIR COMPRESSOR PUMP
800-531-9656

www.IndustrialGold.com



PARTS LIST			
ITEM	PARTS#	DESCRIPTION	QTY
70	8447	"O" RING—COVER \varnothing 77.5x \varnothing 3.55	4
71	1551066	HOLD DOWN COVER—LP INLET CA4	2
72	1551067	"O" RING—PLUNGER \varnothing 25.8x \varnothing 3.55	2
73	1551068	LP INLET VALVE CA4	2
74	8423	LP VALVE COPPER GASKET CA4 \varnothing 82* \varnothing 76*0.8	4
75	1551070	RIGHT LP CYLINDER HEAD CA4 \varnothing 155	1
76	1551071	AFTERCOOLER GASKET CA4	4
77	1551072	LEFT INLET UNLOADER TUBE \varnothing 6*450	1
78	1551073	ELBOW—AFTERCOOLER	2
79	45425	TEE—UNLOADER TUBE	1
80	48633	250PSI SAFETY VALVE ASME	1
81	48139-2	TEE 1/4NPTx1/4NPTx1/4NPT	1
82	12949	ELOBOW—CENTRIFUGAL UNLOADER TUBE NPT1/4 x 1/2-24	1
83	1551076	CENTRIFUGAL UNLOADER TUBE \varnothing 8x815	1
84	1551077	AFTERCOOLER	1
85	1551078	RIGHT INLET UNLOADER TUBE \varnothing 6*450	1
86	1551079	AIR FILTER MUFFLER ASSMBLY	2
86.1	1551079.1	AIR FILTER ELEMENT	2
86.2	1551079.2	AIR FILTER HOUSING	2
87	1551080	GASKET—CYLINDER HEAD L.P.	2
88	1551081	BREATHER ELBOW \varnothing 10	2
89	1551083	PISTON RING SET—L.P. \varnothing 155	2
90	1551082	PISTON RING SET—H.P. \varnothing 82	2
91	8417	WRIST PIN—H.P. \varnothing 28x66	2
92	8415	PISTON—L.P. \varnothing 155	2
93	8416	PISTON—H.P. \varnothing 82	2
94	8052	WRIST PIN—L.P. \varnothing 28x92	2
95	431031-1	SNAP RING—HOLE \varnothing 28	8
96	1551089	NEEDLE BEARING TA2830ZOH (28x37x30)	4
97	38909	CONNECTING ROD	4
98	1551091	INLET UNLOADER TUBE \varnothing 6*275	1
99	37130	HALF INSERTS (k25)	4 PAIRS
100	1551093	LEFT LP CYLINDER HEAD CA4 \varnothing 155	1
101	37104-1	OIL DIPPER (K25)	4
102	160004	PLUG CA1	1

MODEL CA4 TWO STAGE AIR COMPRESSOR PUMP
800-531-9656

www.IndustrialGold.com

