

HOW TO DRAW PABLO



1. Draw a pear shape.



2. Add some tufts.



3. Give him two dots for eyes, and a beak.



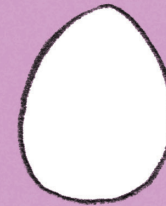
4. Give him feet and flippers for walking and talking.



5. Draw a line from his beak, round the edge of his body and back to his beak. The outer part can be filled in black. You can fill in his claws too.



HOW TO DRAW SPLASH



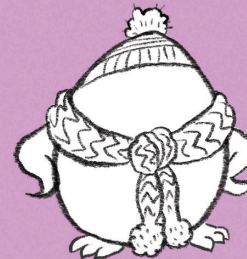
1. Draw an egg shape.



2. Start to add her hat and scarf details.



3. Her scarf has a zigzag pattern and bobbles at the end. Her hat has stripes. Add her feet.



4. Put her flippers on her hips to make her look impatient.



5. Give her two dots for eyes. Her beak is smaller than Pablo's. Draw a line around her body and face and fill in her claws.

