

2026 HANKOOK TIRE

TRUCK & BUS TIRE CATALOG



Hankook Tire America Headquarters
333 Commerce Street, Suite 600 Nashville, Tennessee 37201, USA T +1 615 432 0700 F +1 615 242 8709
www.hankooktire.com/us

260104



OFFICIAL PREMIUM PARTNER OF



hankooktire.com



Contents

About Hankook Tire _____	01
TBR OE Supply _____	03
Product Overview _____	07
Positioning Map _____	09
Hankook TBR Technology _____	12
Hankook Tire Segmentation _____	13

Smart Line

Smart Line AL52 _____	17
e3 Max Line AL21 _____	18
Smart Line DL52 _____	19
e3 Max DL21 _____	20
Smart Line TL52 _____	21
e3 Max TL21 _____	22
Smart Line AL50 _____	23
DL11 _____	24

Ultra-Super Single

e3 Wide DL21 _____	27
e3 Wide DL12 _____	28
e3 Wide TL21 _____	29

Smart Flex

Smart Flex AH51 _____	33
AH24 _____	34
Smart Flex DH51 _____	35
DH37 _____	36
Smart Flex DH52 _____	37
Smart Flex DL12 _____	39
Smart Flex DL15+ _____	40
AH37 _____	41
DH06 _____	42
Smart Flex AH35 _____	43
Smart Flex DH35 _____	44
Smart Flex DH55 _____	45
Smart Flex TH31 _____	46

Smart Work

Smart Work AM09(+) _____	49
Smart Work DM09 _____	50
Smart Work AU57 _____	51
Smart Work AM15(+) _____	52
AH32 _____	53
DM04 _____	54

Smart City

Smart City AU04 _____	57
-----------------------	----

Smart Touring

Smart Touring AL22 _____	58
--------------------------	----

e Smart City

e Smart City AU56 _____	59
-------------------------	----

Introduction _____	61
Warranty _____	67

The data in this booklet can be changed by the manufacturer without prior notice.

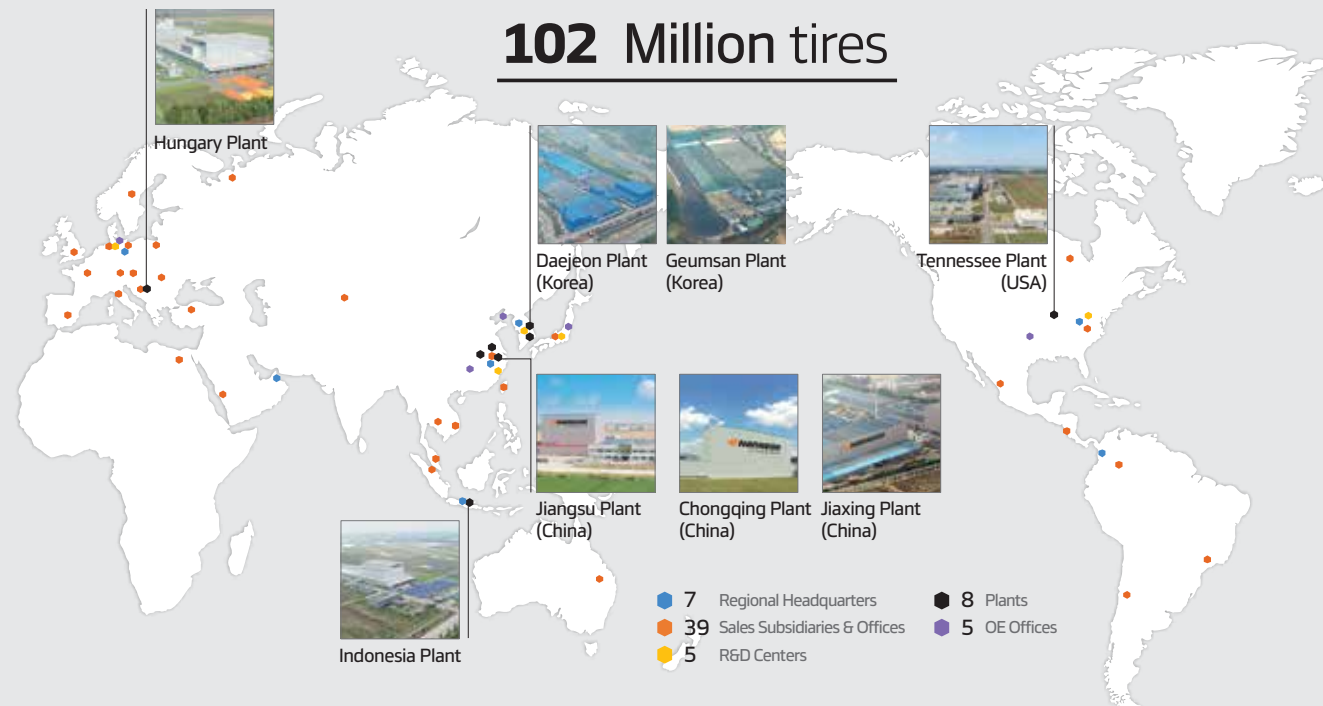
Leading Global Tire Company, Hankook Tire

Hankook Tire & Technology Overview

Hankook Tire is a global corporation that has consistently met the challenges of the future, always a step ahead of changes in the world economy. We have anticipated and prepared for what lies ahead, taking the lead in fostering new growth when important opportunities arise.

Our sales network spans across China, Europe, the Americas, Asia Pacific, and the Middle East & Africa as well as Korea where our headquarters is located in order to ensure that our products satisfy local customer needs.

<p>CEO</p> <p>Jongseon Ahn, Sanghoon Lee</p>	<p>Products</p> <p>Tyres for passenger vehicles, SUV, Trucks and Buses</p>	<p>Global Ranking in Tire Sales</p> <p>7th</p>	<p>Global Sales Revenue (2024)</p> <p>USD 6.9 Billion</p>
<p>Production Capacity</p> <p>102 Million Units</p>	<p>Global Corporate Organisation</p> <p>7 regional headquarters 5 R&D centers 8 manufacturing plants 39 local subsidiaries</p>	<p>Number of Selling Countries</p> <p>Approximately 160 countries</p>	<p>Number of Employees</p> <p>Approximately 22,000</p>



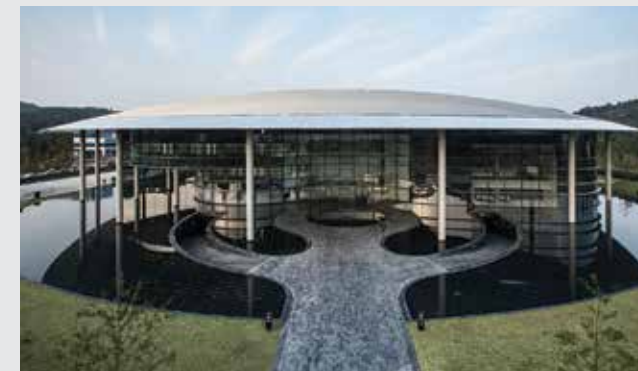
Hankook Tire's Global R&D Center

Technoplex



Hankook Technoplex is the corporate headquarters of Hankook Tire & Technology, located in Pangyo Techno Valley, Gyeonggi-do, South Korea. Standing on a 5,461m² lot area with 6 floors below ground and 10 floors above ground making up a total of 45,919m² gross floor area, the building serves as the foundation for the company's growth strategy and culture. As Hankook's second project with the world-renowned architecture firm Foster+Partners founded by Sir Norman Foster, it features flexible and open workspaces to nurture a challenging spirit and innovation, connect employees, and further support its proactive culture.

Technodome



Hankook's high-tech R&D center, Technodome, stands on a massive footprint of 70,288m² of lot area with a 96,347m² gross floor area in Daedeok Innopolis, Daejeon, Korea. A high-tech R&D center that oversees four global research institutes in the U.S., Germany, China, and Japan, the Technodome serves as a symbol of Hankook Tire's innovation, developing proprietary technology and strengthening future advancements based on traditional and applied research. The "glocalization" (Globalization + Localization) strategy implemented through the cooperation of global research institutes worldwide allows Hankook Tire to lead future tire technology development while sustaining superior quality.

Technoring



Located in Taean-gun, Chungcheongnam-do, South Korea, Hankook Technoring has a site area of 1.26 million square meters (as large as 125 football fields combined), featuring one of the largest and the longest tire test tracks in Asia and comprising 13 independent testing roads. The proving ground is equipped with office buildings, workshops, a gas station, and electric vehicle charging stations that accommodate all types of vehicles including passenger cars, trucks and buses. Its scale and state-of-the-art facilities meet the demanding requirements of global premium carmakers.

Hankook TBR OE Supply

	2013	2018	2019		2023~							
Vehicle	 MV Series HV Series	 F Series	 Cascadia M2		 Alliado	 SAF-T-LINER	 IC Bus	 RAM 4500 RAM 5500	 L / XL Series			
Steer	AH37 	AH35 	AL21 	AH37 	AH24 	AH37 	AH35 	AH37 	AH35 			
Drive	DH37 	DH35 	DL11 	DH37 	DH06 	DH37 	DH37 	DH35 	DL11 	DH35 	DH37 	DH52



Supplying Product by OE Account

Daimler Truck North America

Vehicle	Size	Product
108SD	11R22.5	AH37
	11R22.5	DH06
114SD	11R22.5	DH06
	295/75R22.5	DL11
57X	11R22.5	AH24
	10R22.5	AH37
Gaffney B2 106	11R22.5	AH37
	255/70R22.5	AH37
	11R22.5	DH06
	10R22.5	DH37
M2 106	11R22.5	AH37
	11R22.5	AL21
	295/75R22.5	AL21
	295/75R22.5	AL21
	11R22.5	DH06
	11R22.5	DL11
	11R22.5	DL11
	295/75R22.5	DL11
PE116DC	11R22.5	AH37
	295/75R22.5	AL21
	11R22.5	DL11
	295/75R22.5	DL11
PE116SLP	11R22.5	AH37
	11R22.5	DL11
	295/75R22.5	DL11
	295/75R22.5	AH24
PT126DC	11R22.5	AH37
	11R22.5	AL21
	295/75R22.5	AL21
	11R22.5	DL11
	11R22.5	DL11
	295/75R22.5	AL21
PT126SLP	295/75R22.5	AL21
	11R22.5	DL11
	295/75R22.5	DL11

Ford

Vehicle	Size	Product
F650/750	245/70R19.5	AH35
	245/70R19.5	AH35
	265/70R19.5	AH35
	245/70R19.5	DH35
	245/70R19.5	DH35
	265/70R19.5	DH35

Hino

Vehicle	Size	Product
L Series	11R22.5	AH37
	11R22.5	DL11
	245/70R19.5	AH35
	255/70R22.5	AH37
XL Series	11R22.5	AH37
	11R22.5	DL11
	11R22.5	DH52
	245/70R19.5	DH35
	255/70R22.5	DH37

International

Vehicle	Size	Product
HV Series	425/65R22.5	AH32
	11R24.5	DH37
IC Bus (CE, RE Series)	11R22.5	AH37
	11R22.5	AH37
	10R22.5	AH37
	295/75R22.5	AH37
	10R22.5	AH37
	11R22.5	DH37
	11R22.5	DH37
	10R22.5	DH37
	10R22.5	DH37
	295/75R22.5	DH37
MV Series	255/70R22.5	AH37

Müller-BBM

Vehicle	Size	Product
Alliado	11R22.5	AH37
	11R24.5	AH37
	255/70R22.5	AH37

Stellantis

Vehicle	Size	Product
RAM 4500	225/70R19.5	AH35
	225/70R19.5	DH35
RAM 5500	225/70R19.5	AH35
	225/70R19.5	DH35

Tata Daewoo

Vehicle	Size	Product
Novus / Prima	295/80R22.5	DH31
	315/80R22.5	AH11
	245/70R19.5	AH35
	265/70R19.5	AH35
	315/80R22.5	AH31
	315/70R22.5	AH31
	295/80R22.5	AH31
	275/70R22.5	DH31
	12R22.5	DM06
	1200R24	DM06
	1200R24	AM09
	12R22.5	AH31
	385/65R22.5	AH32

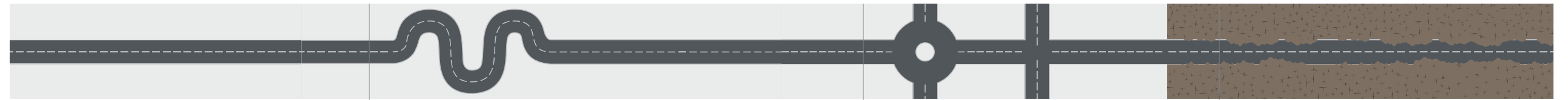
Kia

Vehicle	Size	Product
Granbird	12R22.5	AL10

Hyundai

Vehicle	Size	Product
Universe	12R22.5	AH04
	295/80R22.5	AL10
	11R22.5	AH25
Mighty	8.5R17.5	AH06
	8.5R17.5	DH01
	750R16	F19
	12R22.5,16	DM02
XCIENT	12R22.5	AH22
	385/65R22.5	AH15
	275/70R22.5	AL10
	315/70R22.5	AH11
	315/80R22.5	AH11S
	385/65R22.5	AH15
	12R22.5	DM06
	12R22.5	AH40
ELEC CITY	275/70R22.5	AU06
PAVISE	245/70R19.5	AH35
	285/70R19.5	AH35
QZ FCEV XCIENT	315/80R22.5	AH51
	295/75R22.5	DL21

2026 HANKOOK TIRE TBR PRODUCT OVERVIEW



		Long Haul	Regional Haul	Urban	On&Off
General Commercial Vehicle					
Special Purpose	Coach				
	Winter				

- SMART Line : Optimized for fuel efficiency and high speed at long distance driving.
- SMART Flex : Optimized for long tread life and durability at all types of driving in all-weather
- SMART Work : Optimized for toughness, traction with high load at aggressive road surface
- SMART City : Optimized for even wear and smooth traction at frequent stop & go driving

- e-SMART City : Eco-friendly electric bus tires optimized for enhanced mileage against high torque, improved battery mileage and superior loading capacity.
- SMART Touring : Optimized for comfortable people transportation
- SMART Control : Optimized for traction and safety at winter driving

Hankook TBR Products

		Long Haul		Regional Haul			Urban		On & Off			
Steer		SMART Line AL52 AL21 AL50 		SMART Touring AL22 		SMART Flex AH51 AH24 AH32 AH37 AH35 			SMART City AU04 e-SMART City AU56 		SMART Work AU57 AM09(+) AM15(+) 	
		Drive		DL52 DL21 DL11 		Ultra Super Single DL21 DL12 		DL12 DH51 DL15+ DH06 DH55 DH37 DH52 DH35 			DM09 DM04 	
				Trailer		TL52 TL21 		TL21 		TH31 		

Hankook TBR Technology

SMARTEC HANKOOK TBR TECHNOLOGY

From research to development throughout production, all Hankook commercial tires are based on the SmartTec technology system and aim to provide all partners with the best and safest driving experiences.



Safety
Robust structure



Mileage
Cover more distance



Anti chip & cut
Sturdy compound



Retreadability
Saving costs



Traction
Enhanced safety

Hankook Tire Segmentation

SMART Line AL52

		1	2	3	4	
		1. Product Name	2. Position	3. Circumstance	4. Sequence Number	
Usage Type						
Position	A All-position	AL	AH	AU	AM	AW
	D Drive	DL	DH	DU	DM	DW
	T Trailer	TL	TH		TM	TW

L	Long haul	Designed for long distance and high average speed on motorways and truck roads.	SEVERITY
H	Regional haul	Medium distance for local road conditions, epitomized tread life	
U	Urban	Designed for driving in urban areas with frequent stops and city buses.	
M	Mixed service, off-road	For rough surface, need for off-road grip and damage resistance.	
W	Winter	Truck winter tires specialized for snow and ice roads	

Position		
All-position	Drive	Trailer



SMART Line

Smart Line AL52

e3 Max AL21

Smart Line DL52

e3 Max DL21

Smart Line TL52

e3 Max TL21

Smart Line AL50

DL11

SMART Line AL52

Longer mileage with high fuel efficiency for long haul use

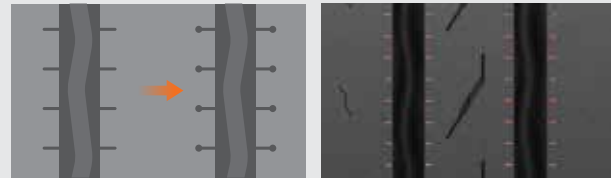
Extended Warranty

SMARTEC
HANKOOK TBR TECHNOLOGY

Pending Approval for SmartWay & CARB

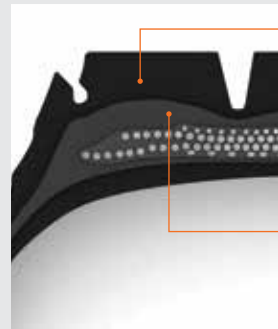
Multi Round Edge Sipe

The round shape sipes at the groove edge mitigate tearing and cracking. It resist irregular wear and provides high mileage.



2D Kerf Round Edge Sipe

Tread Compound Technology



LRR (Low Rolling Resistance) & mileage compound

New tread compound provides more good fuel efficiency and mileage performance

Optimized tread gauge design

It minimizes energy loss and enhances fuel efficiency due to the decrease of heat generation.



Sizes & Specifications (Pattern Code: AL52)

S-Code	Size	Ply/Load Rating	Type	Measuring Rim	Approved Rim	Max. Air (PSI)		Max. Load (LBS)		Overall Diameter (inch)	Section Width (inch)	Tread Width (inch)	Tread Depth (32nd inch)	Revs/ Mile	SLR (inch)	Max Speed (mph)	Weight (lbs)
						S	D	S	D								
3004086	11R22.5	14G	T/L	8.25	7.50	105	105	6175	5840	41.3	11.2	8.1	19	498	19.4	75	121
3004087	11R22.5	16H	T/L	8.25	7.50	120	120	6610	6005	41.3	11.2	8.1	19	498	19.4	75	121
3004088	11R24.5	14G	T/L	8.25	7.50	105	105	6610	6005	43.4	11.3	8.1	19	479	20.0	75	122
3004089	11R24.5	16H	T/L	8.25	7.50	120	120	7160	6610	43.4	11.3	8.1	19	479	20.0	75	122
3004090	285/75R24.5	14G	T/L	8.25	7.50, 9.00	110	110	6175	5675	41.4	11.0	8.1	19	498	19.1	75	116
3004091	285/75R24.5	16H	T/L	8.25	7.50, 9.00	120	120	6780	6175	41.4	11.0	8.1	19	498	19.1	75	116
3003939	295/75R22.5	16H	T/L	8.25	9.00	123	123	7160	6610	40.2	11.4	8.5	19	514	18.7	75	118

- (Unlimited Retreads / 7 years)
- Use inflation pressure specifications dependant on load.
- Tire construction and material specifications subject to change without notice or obligation.
- S - Single, D - Dual

Recommended Vehicle Types & Position

○ Recommended position



e³ MAXAL21

Long haul steer tire with long mileage and fuel efficiency

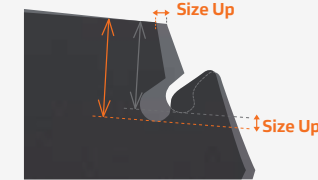
Extended Warranty

SMARTEC
HANKOOK TBR TECHNOLOGY

Approved for SmartWay & CARB

Innovative Side Decoupling Groove

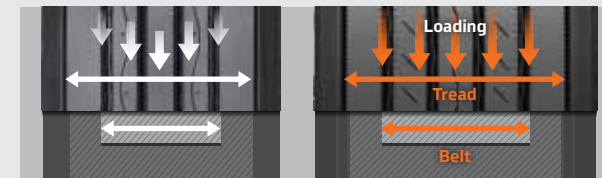
Mitigates uneven wear by reducing movement between sidewall and shoulder.



Old e³ MAXAL21

Improved Grip Force

Expanded belt provides equal road grip which results in even wear and better performance.



Old

e³ MAXAL21



Sizes & Specifications (Pattern Code: AL21)

S-Code	Size	Ply/Load Rating	Type	Measuring Rim	Approved Rim	Max. Air (PSI)		Max. Load (LBS)		Overall Diameter (inch)	Section Width (inch)	Tread Width (inch)	Tread Depth (32nd inch)	Revs/ Mile	SLR (inch)	Max Speed (mph)	Weight (lbs)
						S	D	S	D								
3003108	11R22.5	14G	T/L	8.25	7.50	105	105	6175	5840	41.4	11.1	8.1	19	500	19.3	75	120
3003109	11R22.5	16H	T/L	8.25	7.50	120	120	6610	6005	41.4	11.1	8.1	19	498	19.4	75	120
3003110	11R24.5	14G	T/L	8.25	7.50	105	105	6610	6005	43.5	11.3	8.1	19	476	20.3	75	122
3003112	285/75R24.5	14G	T/L	8.25	7.50, 9.00	110	110	6175	5675	41.5	10.9	8.1	19	498	19.4	75	115
3002488	295/75R22.5	16H	T/L	8.25	9.00	120	120	7160	6610	40.2	11.4	8.5	19	514	18.6	75	116

- (Unlimited Retreads / 7 years)
- Use inflation pressure specifications dependant on load.
- Tire construction and material specifications subject to change without notice or obligation.
- S - Single, D - Dual

Recommended Vehicle Types & Position

○ Recommended position



SMART Line DL52

Fuel efficient and optimized traction performance
For long haul drive position

Extended Warranty M+S **SMARTEC**
HANKOOK TBR TECHNOLOGY
Pending Approval for SmartWay & CARB



Hidden Lateral Groove
These hidden grooves appear as the tire wears. This creates new water channels and gripping surfaces giving better wet grip & traction.



Main Center Groove Zig-Zag
Main center zig-zag grooves deliver great traction performance.



Full 3D Sipe
Full depth 3D Sipes deliver excellent mileage and traction during the whole tire life by reinforcing interlocking between blocks



Sizes & Specifications (Pattern Code: DL52)

S-Code	Size	Ply/Load Rating	Type	Measuring Rim	Approved Rim	Max. Air (PSI)		Max. Load (LBS)		Overall Diameter (inch)	Section Width (inch)	Tread Width (inch)	Tread Depth (32nd inch)	Revs/Mile	SLR (inch)	Max Speed (mph)	Weight (lbs)
						S	D	S	D								
3003988	11R22.5	14G	T/L	8.25	7.50	105	105	6175	5840	41.9	11.1	8.9	25	497	19.5	75	126
3003989	11R22.5	16H	T/L	8.25	7.50	120	120	6610	6005	41.9	11.1	8.9	25	497	19.5	75	126
3004021	11R24.5	14G	T/L	8.25	7.50	105	105	6610	6005	43.8	11.3	8.9	25	473	20.1	75	134
3004022	11R24.5	16H	T/L	8.25	7.50	120	120	7160	6610	43.8	11.3	8.9	25	472	20.2	75	134
3004023	285/75R24.5	14G	T/L	8.25	7.50, 9.00	110	110	6175	5675	41.8	11.0	8.9	25	494	19.4	75	126
3003898	295/75R22.5	14G	T/L	8.25	9.00	110	110	6175	5675	40.6	11.4	8.9	25	510	19.0	75	121

- (Unlimited Retreads / 7 years)
- Use inflation pressure specifications dependant on load.
- Tire construction and material specifications subject to change without notice or obligation.
- S - Single, D - Dual

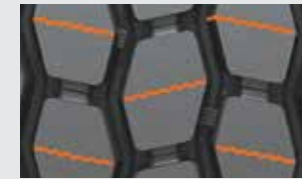
Recommended Vehicle Types & Position Recommended position



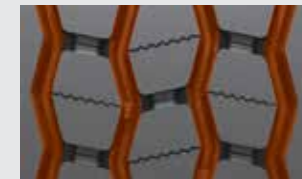
e³ MAX DL21

Long haul drive tire with long mileage and fuel efficiency

Extended Warranty M+S **SMARTEC**
HANKOOK TBR TECHNOLOGY
Approved for SmartWay & CARB



3D Kerf
3D Kerf reinforces inter-locking between blocks and it delivers great traction performance, stability and even wear.



Zig-Zag Groove
Main 4 zig-zag grooves provides good traction performance.



Closed Shoulder
Closed shoulders delivers smooth wear, fuel efficiency and reinforced stability.



Sizes & Specifications (Pattern Code: DL21)

S-Code	Size	Ply/Load Rating	Type	Measuring Rim	Approved Rim	Max. Air (PSI)		Max. Load (LBS)		Overall Diameter (inch)	Section Width (inch)	Tread Width (inch)	Tread Depth (32nd inch)	Revs/Mile	SLR (inch)	Max Speed (mph)	Weight (lbs)
						S	D	S	D								
3003179	11R22.5	14G	T/L	8.25	7.50	105	105	6175	5840	42.2	11.4	9.1	30	494	19.6	75	134
3003180	11R22.5	16H	T/L	8.25	7.50	120	120	6610	6005	42.2	11.4	9.1	30	493	19.7	75	134
3003181	11R24.5	14G	T/L	8.25	7.50	105	105	6610	6005	44.3	11.3	9.1	30	472	20.6	75	141
3003182	11R24.5	16H	T/L	8.25	7.50	120	120	7160	6610	44.3	11.3	9.1	30	469	20.6	75	141
3003183	285/75R24.5	14G	T/L	8.25	7.50, 9.00	110	110	6175	5675	42.2	11.0	9.3	30	493	19.8	75	131
3002432	295/75R22.5	14G	T/L	8.25	9.00	110	110	6175	5675	40.7	11.4	9.3	30	510	19.0	75	127

- (Unlimited Retreads / 7 years)
- Use inflation pressure specifications dependant on load.
- Tire construction and material specifications subject to change without notice or obligation.
- S - Single, D - Dual

Recommended Vehicle Types & Position Recommended position



SMART Line TL52

The innovative long haul trailer design provides long mileage and offers low cost with a controlled driving experience.

Extended Warranty
SMARTEC
 HANKOOK TBR TECHNOLOGY
 Pending Approval for SmartWay & CARB

Optimized Design



The linear 4-groove pattern offers straight drivability in all conditions. Enhanced shoulder rib improves stability on the road.

Taper



Smooth lines at the edge of the grooves provide optimal footprint to help increase fuel efficiency.

Lateral Groove And Dimple Kerf



The mixed design, featuring lateral grooves and dimple kerfs, reflects contemporary trends in the long haul trailer application.

Side Decoupling Groove

The decoupling groove is designed to resist irregular wear, improve durability and promote stability for better performance.



Conventional SMART Line TL52



Sizes & Specifications (Pattern Code: TL52)

S-Code	Size	Ply/Load Rating	Type	Measuring Rim	Approved Rim	Max. Air (PSI)		Max. Load (LBS)		Overall Diameter (inch)	Section Width (inch)	Tread Width (inch)	Tread Depth (32nd inch)	Revs/ Mile	SLR (inch)	Max Speed (mph)	Weight (lbs)
						S	D	S	D								
3004167	11R22.5	14G	T/L	8.25	7.50	105	105	6175	5840	41.1	11.2	8	12	504	19.1	75	99
3004273	11R24.5	14G	T/L	8.25	7.50	105	105	6610	6005	43.1	11.1	8	12	481	20	75	107
3004280	285/75R24.5	14G	T/L	8.25	7.50, 9.00	110	110	6175	5675	41.1	10.8	8.3	12	503	19.2	75	102
3004112	295/75R22.5	14G	T/L	8.25	9.00	110	110	6175	5675	39.7	11.4	8.3	12	517	18.5	75	95

- (Unlimited Retreads / 7 years)
- Use inflation pressure specifications dependant on load.
- Tire construction and material specifications subject to change without notice or obligation.
- S - Single, D - Dual

Recommended Vehicle Types & Position

○ Recommended position



e³ MAX TL21

Optimized trailer design for enhanced performance

Extended Warranty
SMARTEC
 HANKOOK TBR TECHNOLOGY
 Approved for SmartWay & CARB

Side Decoupling Groove



The decoupling groove is designed to resist irregular wear, improve durability and promote stability for better performance.

Optimized Design



The linear 4-groove pattern offers straight drivability in all conditions. Enhanced shoulder rib improves stability on the road.



Sizes & Specifications (Pattern Code: TL21)

S-Code	Size	Ply/Load Rating	Type	Measuring Rim	Approved Rim	Max. Air (PSI)		Max. Load (LBS)		Overall Diameter (inch)	Section Width (inch)	Tread Width (inch)	Tread Depth (32nd inch)	Revs/ Mile	SLR (inch)	Max Speed (mph)	Weight (lbs)
						S	D	S	D								
3002769	11R22.5	14G	T/L	8.25	7.50	105	105	6175	5840	41.1	11.2	8.0	12	504	19.1	75	99
3002828	11R24.5	14G	T/L	8.25	7.50	105	105	6610	6005	43.1	11.1	8.0	12	481	20.0	75	107
3002849	285/75R24.5	14G	T/L	8.25	7.50, 9.00	110	110	6175	5675	41.1	10.8	8.3	12	503	19.2	75	102
3002383	295/75R22.5	14G	T/L	8.25	9.00	110	110	6175	5675	39.7	11.4	8.3	12	517	18.5	75	95

- Use inflation pressure specifications dependant on load.
- Tire construction and material specifications subject to change without notice or obligation.
- S - Single, D - Dual

Recommended Vehicle Types & Position

○ Recommended position



SMART Line AL50

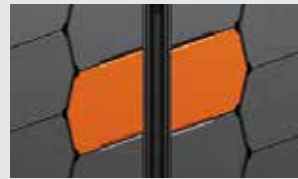
All-position axle tire delivering excellent fuel efficiency with optimized grip performance for long haul use



Stepped Groove
Groove wall step features prevent block deformation and gives reinforcement between tread blocks.



Irregular Wear Prevention Sipe
Multiple sipes prevent irregular wear by dispersing stress applied to the groove edge.



Optimized Block Size
The wide tread block enhances the rigidity and improves both grip and mileage, while reducing rolling resistance.

Sizes & Specifications (Pattern Code: AL50)

S-Code	Size	Ply/Load Rating	Type	Measuring Rim	Approved Rim	Max. Air (PSI)		Max. Load (LBS)		Overall Diameter (inch)	Section Width (inch)	Tread Width (inch)	Tread Depth (32nd inch)	Revs/ Mile	SLR (inch)	Max Speed (mph)	Weight (lbs)
						S	D	S	D								
3003955	295/60R22.5	18J	T/L	9.00	9.75	130	130	7390	6780	36.2	11.3	9.6	14	570	16.7	75	102

• Use inflation pressure specifications dependant on load.
• Tire construction and material specifications subject to change without notice or obligation.
• S - Single, D - Dual

Recommended Vehicle Types & Position ○ Recommended position

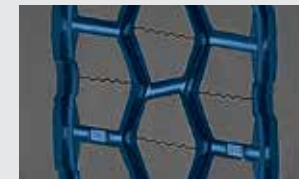


DL11

Reinforced traction performance with high fuel efficiency



Approved for SmartWay & CARB



4-Groove Pattern and Straight and Zig-Zag Type Grooves
Semi zig-zag and 4-grooves provide better traction for dry and wet conditions.



Optimized Tread Design and Compound
Provide a longer tread life and helps save fuel.



Closed Shoulder Rib
Provides stability and better performance for even wear.



Sizes & Specifications (Pattern Code: DL11)

S-Code	Size	Ply/Load Rating	Type	Measuring Rim	Approved Rim	Max. Air (PSI)		Max. Load (LBS)		Overall Diameter (inch)	Section Width (inch)	Tread Width (inch)	Tread Depth (32nd inch)	Revs/ Mile	SLR (inch)	Max Speed (mph)	Weight (lbs)
						S	D	S	D								
3001705	11R22.5	16H	T/L	8.25	7.50	120	120	6610	6005	41.9	11.1	8.5	26	496	19.6	75	125
3001706	11R22.5	14G	T/L	8.25	7.50	105	105	6175	5840	41.9	11.1	8.5	26	498	19.5	75	125
3001707	11R24.5	16H	T/L	8.25	7.50	120	120	7160	6610	43.9	11.1	8.5	26	473	20.5	75	128
3001708	11R24.5	14G	T/L	8.25	7.50	105	105	6610	6005	43.9	11.1	8.5	26	475	20.5	75	128
3001704	285/75R24.5	14G	T/L	8.25	7.50, 9.00	110	110	6175	5675	41.9	11.3	8.5	26	494	19.4	75	122
3001592	295/75R22.5	14G	T/L	8.25	9.00	110	110	6175	5675	40.7	11.4	8.5	26	509	19.1	75	117

• (Unlimited Retreads / 7 years)
• Use inflation pressure specifications dependant on load.
• Tire construction and material specifications subject to change without notice or obligation.
• S - Single, D - Dual

Recommended Vehicle Types & Position ○ Recommended position





ULTRA-SUPER SINGLE

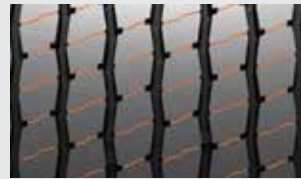
e3 Wide DL21

e3 Wide DL12

e3 Wide TL21

e³ WIDE DL21

Long haul drive tire with long mileage and fuel efficiency



3D Kerf
3D Kerf reinforces inter-locking between blocks and it delivers great traction performance, stability and even wear.



Zig-Zag Groove
Main 7 zig-zag grooves provides good traction performance.



Closed Shoulder
Closed shoulders delivers smooth wear, fuel efficiency and reinforced stability.



Sizes & Specifications (Pattern Code: DL21)

S-Code	Size	Ply/Load Rating	Type	Measuring Rim	Approved Rim	Max. Air (PSI)		Max. Load (LBS)		Overall Diameter (inch)	Section Width (inch)	Tread Width (inch)	Tread Depth (32nd inch)	Revs/ Mile	SLR (inch)	Max Speed (mph)	Weight (lbs)
						S	D	S	D								
3003449	445/50R22.5	20L	T/L	14.00	15.00	120	-	10200	-	40.3	17.4	15.7	24	511	18.5	75	184

- Use inflation pressure specifications dependant on load.
- Tire construction and material specifications subject to change without notice or obligation.
- S - Single, D - Dual

Recommended Vehicle Types & Position Recommended position

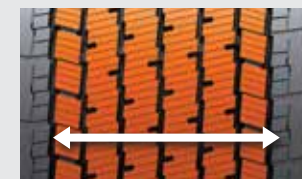


e³ WIDE DL12

Longer mileage and high traction tire for long & regional haul



7 Main Grooves with Zig-Zag Patterns and Full Depth
Long original tread life with excellent traction throughout the tire's entire life.



Combined Structure of Rib and Block Pattern
Provides stability, longer mileage, and better handling performance.



Multi 3D Kerf Design
Better traction that prevents tearing and irregular wear for long mileage.



Sizes & Specifications (Pattern Code: DL12)

S-Code	Size	Ply/Load Rating	Type	Measuring Rim	Approved Rim	Max. Air (PSI)		Max. Load (LBS)		Overall Diameter (inch)	Section Width (inch)	Tread Width (inch)	Tread Depth (32nd inch)	Revs/ Mile	SLR (inch)	Max Speed (mph)	Weight (lbs)
						S	D	S	D								
3002277	445/50R22.5	20L	T/L	14.00	15.00	120	-	10200	-	40.5	17.4	15.7	27	510	18.6	75	188

- Use inflation pressure specifications dependant on load.
- Tire construction and material specifications subject to change without notice or obligation.
- S - Single, D - Dual

Recommended Vehicle Types & Position Recommended position



e³ WIDE TL21

Optimized trailer design for enhanced performance

SMARTEC
HANKOOK TBR TECHNOLOGY
Approved for
SmartWay & CARB

e³ WIDE | Technology and Benefits

Closed Shoulder



Allows for smooth wear, fuel efficiency and increased mileage.

3D Siping



3D siping interlocks blocks to increase traction performance.

Optimized Directional Microsipes



Parallel to the back of the groove, the best angle for limiting irregular wear until the end of tread-life.

Seven Main Grooves



Strengthened shoulder rib reduces deformation of outer groove and improves mileage.



Sizes & Specifications (Pattern Code: TL21)

S-Code	Size	Ply/Load Rating	Type	Measuring Rim	Approved Rim	Max. Air (PSI)		Max. Load (LBS)		Overall Diameter (inch)	Section Width (inch)	Tread Width (inch)	Tread Depth (32nd inch)	Revs/Mile	SLR (inch)	Max Speed (mph)	Weight (lbs)
						S	D	S	D								
3003411	445/50R22.5	20L	T/L	14.00	15.00	120	-	10200	-	39.7	17.4	15.7	16	515	18.3	75	169

- Use inflation pressure specifications dependant on load.
- Tire construction and material specifications subject to change without notice or obligation.
- S - Single, D - Dual

Recommended Vehicle Types & Position

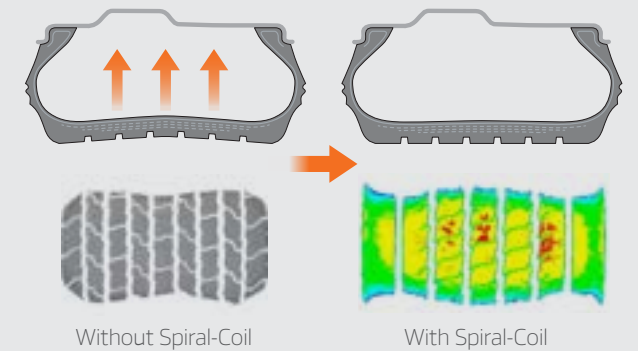
○ Recommended position



New Spiral-Coil Technology



Stabilized footprint

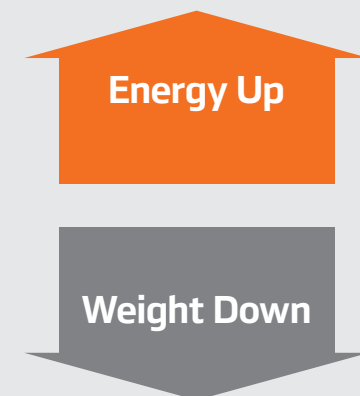


Unique structure provides optimized foot print and strengthened casing stability with Spiral-Coil Technology.

Reduced Weight, Increased Energy Efficiency

Weight savings around 400lbs per tractor. Rolling resistance reduced by 33% compared to duals.

295/75R22.5 VS 445/50R22.5





SMART Flex

Smart Flex AH51

AH24

Smart Flex DH51

DH37

Smart Flex DH52

Smart Flex DL12

Smart Flex DL15+

AH37

DH06

Smart Flex AH35

Smart Flex DH35

Smart Flex DH55

Smart Flex TH31

SMART Flex AH51

All-position axle tire delivering premium performance in all conditions during the tire's long lifespan



SMARTEC
HANKOOK TBR TECHNOLOGY

Pending Approval for SmartWay & CARB



Approved for SmartWay & CARB



3D Sipe

Full depth 3D sipes deliver excellent mileage and traction throughout the tire's lifespan due to reinforced interlocking tread blocks.



Hidden Groove

These hidden grooves appear as the tire wears. This creates new water channels and gripping surfaces, giving better wet grip traction.



A. Arrowhead-Shaped Groove Wall

A widened center groove and optimized groove-wall design help minimize stone retention and maximize stone ejection.

B. Tread Wear Equalized Stepper (T.W.E.S.)

Small step-shaped blocks provide even wearing and prevent stone trapping, resulting in a long tire life.



Sizes & Specifications (Pattern Code: AH51)

S-Code	Size	Ply/Load Rating	Type	Measuring Rim	Approved Rim	Max. Air (PSI)		Max. Load (LBS)		Overall Diameter (inch)	Section Width (inch)	Tread Width (inch)	Tread Depth (32nd inch)	Revs/ Mile	SLR (inch)	Max Speed (mph)	Weight (lbs)
						S	D	S	D								
3004062	11R22.5	16H	T/L	8.25	7.50	120	120	6610	6005	41.5	11.1	9.0	22	499	19.4	75	127
3004069	11R22.5	14G	T/L	8.25	7.50	105	105	6175	5840	41.5	11.1	9.0	22	499	19.4	75	127
*TBD	11R24.5	16H	T/L	TBD	TBD	TBD	TBD	TBD	TBD	TBD	TBD	TBD	TBD	TBD	TBD	TBD	TBD
3004067	295/75R22.5	14G	T/L	8.25	9.00	110	110	6175	5675	40.5	11.4	9.0	22	512	18.9	75	118
3004068	295/75R22.5	16H	T/L	8.25	9.00	123	123	7160	6610	40.5	11.4	9.0	22	512	18.9	75	118
3003836	385/65R22.5	20L	T/L	11.75	12.25	131	-	9920	-	42.2	14.9	12.1	18	488	19.6	68	157

- Use inflation pressure specifications dependant on load.
- Tire construction and material specifications subject to change without notice or obligation.
- S - Single, D - Dual
- * Available Q3 2027
- * 385/65R22.5, • Directional pattern

Recommended Vehicle Types & Position Recommended position



AH24

Longer mileage tire for medium haul

Optimized Pattern Design for Medium Haul Tire



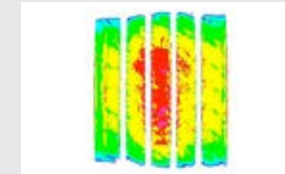
Combination of straight and zig-zag grooves provides better performance for traction and driving.



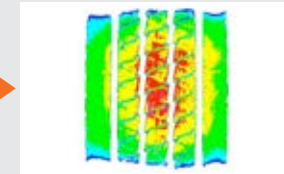
Unique tread design helps decrease stone retention. Deeper groove and wider tread provide longer tread life.

Increased Durability & Foot Shape

AH24 shows better durability & foot shape. Stable foot shape and expanded tread area.



Conventional



AH24



Sizes & Specifications (Pattern Code: AH24)

S-Code	Size	Ply/Load Rating	Type	Measuring Rim	Approved Rim	Max. Air (PSI)		Max. Load (LBS)		Overall Diameter (inch)	Section Width (inch)	Tread Width (inch)	Tread Depth (32nd inch)	Revs/ Mile	SLR (inch)	Max Speed (mph)	Weight (lbs)
						S	D	S	D								
3001472	11R22.5	14G	T/L	8.25	7.50	105	105	6175	5840	41.7	11.0	8.8	22	496	19.5	75	124
3001786	11R22.5	16H	T/L	8.25	7.50	120	120	6610	6005	41.7	11.0	8.8	22	495	19.5	75	124
3001787	11R24.5	14G	T/L	8.25	7.50	105	105	6610	6005	43.7	11.3	8.8	22	474	20.3	75	130
3001788	11R24.5	16H	T/L	8.25	7.50	120	120	7160	6610	43.7	11.3	8.8	22	473	20.3	75	130
3001628	285/75R24.5	14G	T/L	8.25	7.50, 9.00	110	110	6175	5675	41.6	11.3	8.8	22	495	19.6	75	121
3001630	295/75R22.5	14G	T/L	8.25	9.00	110	110	6175	5675	40.4	11.4	8.8	22	510	18.9	75	115

- Use inflation pressure specifications dependant on load.
- Tire construction and material specifications subject to change without notice or obligation.
- S - Single, D - Dual

Recommended Vehicle Types & Position Recommended position



SMART Flex DH51

Drive axle tire delivering premium performance in all conditions during the tire's long lifespan

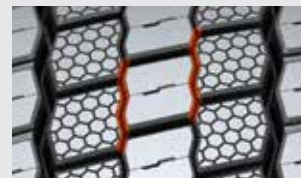


SMARTEC
HANKOOK TBR TECHNOLOGY

Pending Approval for SmartWay & CARB



Hidden Groove
These hidden grooves appear as the tire wears. This creates new water channels and gripping surfaces giving better wet grip traction.



Zig-Zag Groove
The center zig-zag grooves create a binding effect on each tread block contributing to better rolling resistance and traction.

Wide Tread Block

A wider tread block than the previous product increases the tire footprint and grip, leading to an improved mileage performance and rolling resistance.



Sizes & Specifications (Pattern Code: DH51)

S-Code	Size	Ply/Load Rating	Type	Measuring Rim	Approved Rim	Max. Air (PSI)		Max. Load (LBS)		Overall Diameter (inch)	Section Width (inch)	Tread Width (inch)	Tread Depth (32nd inch)	Revs/ Mile	SLR (inch)	Max Speed (mph)	Weight (lbs)
						S	D	S	D								
3004099	11R22.5	14G	T/L	8.25	7.50	105	105	6175	5840	41.8	11.1	9.3	26	500	19.5	75	132
3004100	11R22.5	16H	T/L	8.25	7.50	120	120	6610	6005	41.8	11.1	9.3	26	500	19.5	75	132
* TBD	11R24.5	16H	T/L	TBD	TBD	TBD	TBD	TBD	TBD	TBD	TBD	TBD	TBD	TBD	TBD	TBD	TBD
* TBD	295/75R22.5	14G	T/L	TBD	TBD	TBD	TBD	TBD	TBD	TBD	TBD	TBD	TBD	TBD	TBD	TBD	TBD

• Use inflation pressure specifications dependant on load.
• Tire construction and material specifications subject to change without notice or obligation.
• S - Single, D - Dual
• Available Q3 2027

Recommended Vehicle Types & Position Recommended position



DH37

Regional haul drive tire for extreme mileage & traction



SMARTEC
HANKOOK TBR TECHNOLOGY

Approved for SmartWay & CARB



Rib and Block Type Tread Design
Combination of rib and block type tread design and 3D kerfs provides better traction, increased mileage, and reduced irregular wear.



Optimized Shoulder Design
Semi-open shoulder lug provides excellent traction in variable road conditions.



Tie-Bar
Increased block stiffness that provides better handling performance.



Sizes & Specifications (Pattern Code: DH37)

S-Code	Size	Ply/Load Rating	Type	Measuring Rim	Approved Rim	Max. Air (PSI)		Max. Load (LBS)		Overall Diameter (inch)	Section Width (inch)	Tread Width (inch)	Tread Depth (32nd inch)	Revs/ Mile	SLR (inch)	Max Speed (mph)	Weight (lbs)
						S	D	S	D								
3003276	10R22.5	14G	T/L	7.50	6.75, 8.25	115	115	5675	5355	40.4	9.9	7.5	22	514	19.0	75	103
3002164	11R22.5	14G	T/L	8.25	7.50	105	105	6175	5840	41.9	11.3	8.7	26	496	19.6	75	127
3002165	11R22.5	16H	T/L	8.25	7.50	120	120	6610	6005	41.9	11.3	8.7	26	495	19.6	75	127
3002491	11R24.5	16H	T/L	8.25	7.50	120	120	7160	6610	44.0	11.1	8.7	26	472	20.6	75	134
3003184	255/70R22.5	16H	T/L	7.50	8.25	120	120	5510	5070	36.9	9.9	8.2	23	558	17.3	75	97
3002494	285/75R24.5	14G	T/L	8.25	7.50, 9.00	110	110	6175	5675	41.9	11.3	8.7	26	494	19.7	75	126
3002493	295/75R22.5	14G	T/L	8.25	9.00	110	110	6175	5675	40.7	11.4	8.7	26	509	19.0	75	119

• Use inflation pressure specifications dependant on load.
• Tire construction and material specifications subject to change without notice or obligation.
• S - Single, D - Dual

Recommended Vehicle Types & Position Recommended position



SMART Flex DH52

Regional haul drive tire for extreme mileage & traction during the tire's long lifespan

SMART TEC
HANKOOK TBR TECHNOLOGY
Pending Approval for SmartWay & CARB

SMART TEC

HANKOOK TBR TECHNOLOGY

Smart tire integrates the cutting-edge Smartec technology to ensure longer mileage safely, exclusively made for trucks and buses.



Zig-Zag Grooves and Open Shoulders

Zig-zag grooves and open shoulders provide the best performance for traction.



Optimized Block Design

Optimized block design for tire rigidity delivers low rolling resistance and helps mitigate irregular wear.



Heel & Toe Stopper

Heel & toe stopper in lateral grooves results in self-regenerating sipes which keep excellent traction performance until the end of wear.



Sizes & Specifications (Pattern Code: DH52)

S-Code	Size	Ply/Load Rating	Type	Measuring Rim	Approved Rim	Max. Air (PSI)		Max. Load (LBS)		Overall Diameter (inch)	Section Width (inch)	Tread Width (inch)	Tread Depth (32nd inch)	Revs/Mile	SLR (inch)	Max Speed (mph)	Weight (lbs)
						S	D	S	D								
3003924	11R22.5	14G	T/L	8.25	7.50	105	105	6175	5840	41.9	11.1	8.9	27	499	19.6	75	130
3003925	11R22.5	16H	T/L	8.25	7.50	120	120	6610	6005	41.9	11.1	8.9	27	499	19.6	75	130
*3004171	11R24.5	14G	T/L	8.25	7.50	105	105	6610	6005	44.1	9.9	8.9	27	476	20.6	75	134
*3004172	11R24.5	16H	T/L	8.25	7.50	120	120	7160	6610	44.1	9.9	8.9	27	476	20.6	75	134
3004299	255/70R22.5	16H	T/L	7.50	6.75, 8.25	120	120	5510	5070	37.0	9.9	8.5	24	558	17.3	75	100
*3004170	295/75R22.5	14G	T/L	8.25	9.00	110	110	6175	5675	40.7	11.4	8.9	27	510	19	75	123

- Use inflation pressure specifications dependant on load.
- Tire construction and material specifications subject to change without notice or obligation.
- S - Single, D - Dual
- * Available Q2 2026

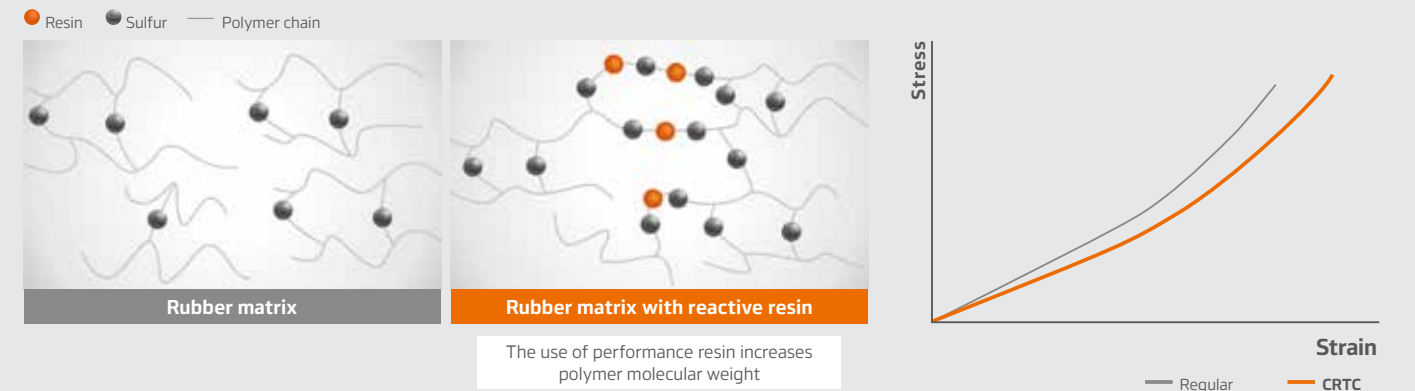
Recommended Vehicle Types & Position



Cut & Chip Resistant Tread Compound

Reactive double bond with sulfur of performance resin increases the molecular weight of polymers, improving cut & chip resistance.

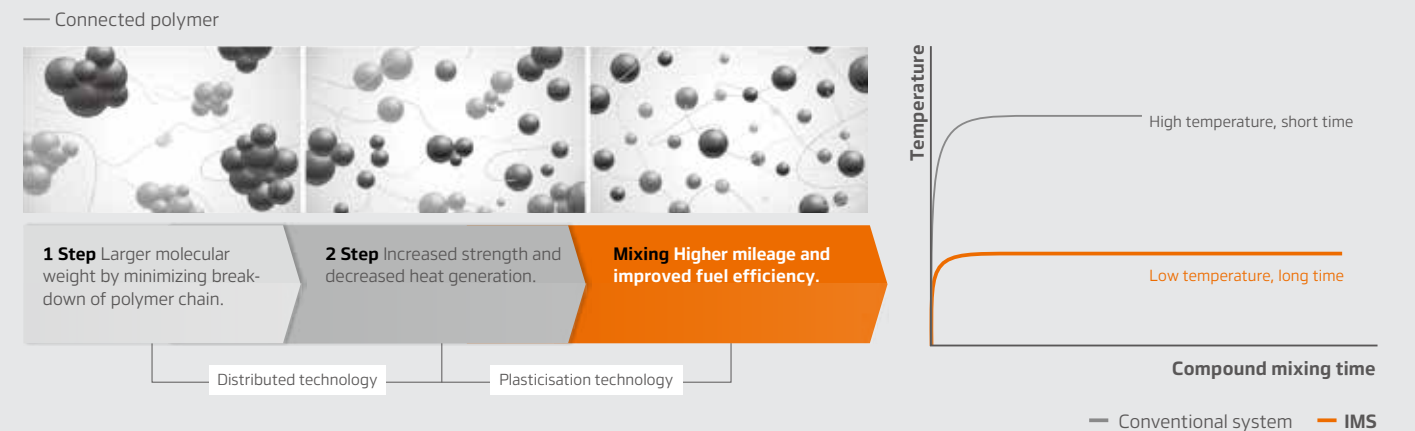
The new resin application technique improves Cut & Chip resistance.



Innovative Mixing System

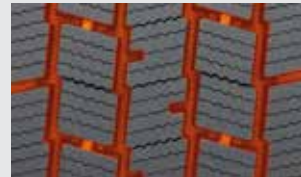
The Innovative Mixing System (IMS) minimizes the disconnection of the polymer chain and oxidation. The carbon black reinforcement also has higher dispersion levels. These effects of IMS help strengthen the bonding force between carbon black and rubber for better strength of compound and lower heat generation.

The benefits of IMS are higher mileage and fuel efficiency.



SMART Flex DL12

Longer mileage and high traction tire for long & regional haul



4-Channel Pattern With Zig-Zag Grooves and Deep Full Depth Grooves

Long original tread life with excellent traction throughout the tire's entire life.



Combined Structure of Rib and Block Pattern

Provides stability, longer mileage, and better handling performance.



Multi 3D Kerf Design

Better traction that mitigates tearing and irregular wear for long mileage.



Sizes & Specifications (Pattern Code: DL12)

S-Code	Size	Ply/Load Rating	Type	Measuring Rim	Approved Rim	Max. Air (PSI)		Max. Load (LBS)		Overall Diameter (inch)	Section Width (inch)	Tread Width (inch)	Tread Depth (32nd inch)	Revs/Mile	SLR (inch)	Max Speed (mph)	Weight (lbs)
						S	D	S	D								
3002142	11R22.5	14G	T/L	8.25	7.50	105	105	6175	5840	42.0	11.3	9.6	28	497	19.6	75	135
3002143	11R22.5	16H	T/L	8.25	7.50	120	120	6610	6005	42.0	11.3	9.6	28	496	19.6	75	135
3002144	11R24.5	14G	T/L	8.25	7.50	105	105	6610	6005	44.0	11.3	9.6	28	475	20.6	75	139
3002145	11R24.5	16H	T/L	8.25	7.50	120	120	7160	6610	44.0	11.3	9.6	28	473	20.6	75	139
3002140	285/75R24.5	14G	T/L	8.25	7.50, 9.00	110	110	6175	5675	42.0	11.3	9.6	28	495	19.7	75	131
3001874	295/75R22.5	14G	T/L	8.25	9.00	110	110	6175	5675	40.7	11.4	9.6	28	511	19.0	75	127

- Use inflation pressure specifications dependant on load.
- Tire construction and material specifications subject to change without notice or obligation.
- S - Single, D - Dual

Recommended Vehicle Types & Position ● Recommended position



SMART Flex DL15+

Fuel efficient and optimized traction performance for long and regional haul

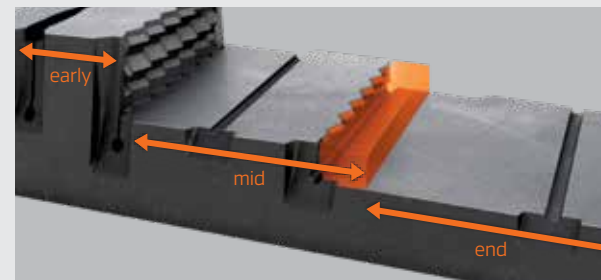


Approved for SmartWay & CARB



Self-Regenerating Siping

Appears as groove at the mid and latter stage of use and it keeps excellent traction until the end of wear.



Bottom Round Edge Siping

Round at the end of sipe mitigates crack and tearing.



Sizes & Specifications (Pattern Code: DL15+)

S-Code	Size	Ply/Load Rating	Type	Measuring Rim	Approved Rim	Max. Air (PSI)		Max. Load (LBS)		Overall Diameter (inch)	Section Width (inch)	Tread Width (inch)	Tread Depth (32nd inch)	Revs/Mile	SLR (inch)	Max Speed (mph)	Weight (lbs)
						S	D	S	D								
3004004	11R22.5	14G	T/L	8.25	7.50	105	105	6175	5840	41.7	11.0	9.6	25	501	19.4	75	133
3004005	11R22.5	16H	T/L	8.25	7.50	120	120	6610	6005	41.7	11.0	9.6	25	501	19.4	75	133
3004024	11R24.5	14G	T/L	8.25	7.50	105	105	6610	6005	43.9	11.4	9.6	25	478	20.2	75	138
3004025	11R24.5	16H	T/L	8.25	7.50	120	120	7160	6610	43.9	11.4	9.6	25	478	20.2	75	138
3003870	295/75R22.5	14G	T/L	8.25	9.00	110	110	6175	5675	40.6	11.6	9.6	25	512	19.0	75	128

- Use inflation pressure specifications dependant on load.
- Tire construction and material specifications subject to change without notice or obligation.
- S - Single, D - Dual

Recommended Vehicle Types & Position ● Recommended position



AH37

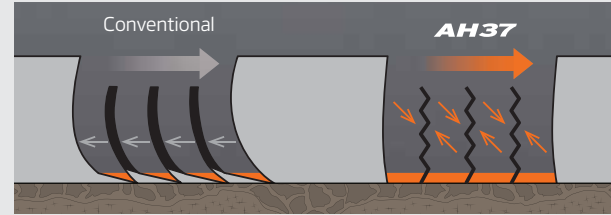
Regional tire for extreme mileage & fuel efficiency

SMARTEC
HANKOOK TBR TECHNOLOGY

Approved for
SmartWay & CARB

3D Kerf Technology

Better traction, increased mileage and controlled wearing with less irregular wear.



Zig-Zag Traction Groove

Improves traction and braking performance by expanding the point of intersection through four zig-zag grooves with 3D kerf.



Sizes & Specifications (Pattern Code: AH37)

S-Code	Size	Ply/Load Rating	Type	Measuring Rim	Approved Rim	Max. Air (PSI)		Max. Load (LBS)		Overall Diameter (inch)	Section Width (inch)	Tread Width (inch)	Tread Depth (32nd inch)	Revs/ Mile	SLR (inch)	Max Speed (mph)	Weight (lbs)
						S	D	S	D								
3002448	10R22.5	14G	T/L	7.50	6.75, 8.25	115	115	5675	5355	40.0	10.0	7.6	16	516	18.8	75	94
3002162	11R22.5	14G	T/L	8.25	7.50	105	105	6175	5840	41.5	11.1	8.3	20	499	19.4	75	117
3002163	11R22.5	16H	T/L	8.25	7.50	120	120	6610	6005	41.5	11.1	8.3	20	498	19.4	75	117
3002444	11R24.5	14G	T/L	8.25	7.50	105	105	6610	6005	43.5	11.1	8.3	20	478	20.3	75	121
3002445	11R24.5	16H	T/L	8.25	7.50	120	120	7160	6610	43.5	11.1	8.3	20	476	20.4	75	125
3002449	12R22.5	16H	T/L	9.00	8.25	120	120	7390	6780	42.7	12.0	8.5	19	484	19.9	75	131
* 3002450	255/70R22.5	16H	T/L	7.50	8.25	120	120	5510	5070	36.7	9.9	7.8	18	560	17.2	75	91
3002452	275/70R22.5	18J	T/L	8.25	7.50	131	131	6940	6395	37.9	11.0	8.9	19	545	17.6	75	106
3002447	285/75R24.5	14G	T/L	8.25	7.50, 9.00	110	110	6175	5675	41.5	11.3	8.3	20	498	19.4	75	116
3002446	295/75R22.5	14G	T/L	8.25	9.00	110	110	6175	5675	40.3	11.4	8.3	20	513	18.8	75	109
3002512	295/75R22.5	16H	T/L	8.25	9.00	120	120	6610	6005	40.3	11.4	8.3	20	512	18.8	75	108

• Use inflation pressure specifications dependant on load.
• Tire construction and material specifications subject to change without notice or obligation.
• S - Single, D - Dual
* 3002450 is the only size M+S rated.

Recommended Vehicle Types & Position

○ Recommended position



DH06

Longer mileage and high traction tire for medium haul

UMS M+S



Zig-Zag Grooves and Open Shoulders

Zig-zag grooves and open shoulders provide the best performance for traction.



Optimized Block

Optimized block size helps mitigate irregular wear.



Deeper Grooves and Wide Tread

Deeper grooves and wider tread provide longer tread life in all weather conditions.



Sizes & Specifications (Pattern Code: DH06)

S-Code	Size	Ply/Load Rating	Type	Measuring Rim	Approved Rim	Max. Air (PSI)		Max. Load (LBS)		Overall Diameter (inch)	Section Width (inch)	Tread Width (inch)	Tread Depth (32nd inch)	Revs/ Mile	SLR (inch)	Max Speed (mph)	Weight (lbs)
						S	D	S	D								
3000844	11R22.5	14G	T/L	8.25	7.50	105	105	6175	5840	42.1	11.1	8.7	28	495	19.7	75	127
3001546	11R22.5	16H	T/L	8.25	7.50	120	120	6610	6005	42.1	11.1	8.7	28	494	19.7	75	127
3001488	11R24.5	16H	T/L	8.25	7.50	120	120	7160	6610	44.1	11.1	8.7	28	473	20.7	75	130
3001635	295/75R22.5	14G	T/L	8.25	9.00	110	110	6175	5675	40.8	11.4	9.1	28	509	19.1	75	122

• Use inflation pressure specifications dependant on load.
• Tire construction and material specifications subject to change without notice or obligation.
• S - Single, D - Dual

Recommended Vehicle Types & Position

○ Recommended position



SMART Flex AH35

New all-season tire designed for variable road conditions



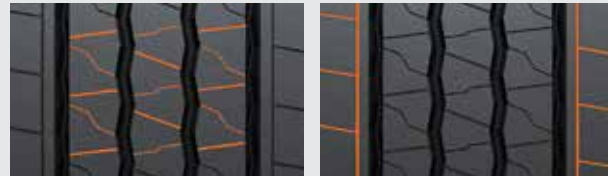
Wide Tread Width

Wide tread width offers high contact volume which results into a high mileage performance.



Special Tread Pattern Design with Semi-Sipes

Special tread pattern design with semi-sipes ensures even wear throughout the tire's lifespan.



Sizes & Specifications (Pattern Code: AH35)

S-Code	Size	Ply/Load Rating	Type	Measuring Rim	Approved Rim	Max. Air (PSI)		Max. Load (LBS)		Overall Diameter (inch)	Section Width (inch)	Tread Width (inch)	Tread Depth (32nd inch)	Revs/ Mile	SLR (inch)	Max Speed (mph)	Weight (lbs)
						S	D	S	D								
3003890	215/75R17.5	16H	T/L	6.00	6.75	125	125	4805	4540	30.5	8.5	7.4	16	681	14.1	62	64
3002622	225/70R19.5	14G	T/L	6.75	6.00	110	110	3970	3750	32.2	8.9	7.4	17	640	15.0	87	64
3003268	235/75R17.5	16H	T/L	6.75	7.50	110	110	4410	4190	31.4	9.4	8.4	15	660	14.6	75	66
3002623	245/70R19.5	14G	T/L	7.50	6.75	110	110	4540	4300	33.3	9.8	8.0	17	622	15.5	81	75
3002624	245/70R19.5	16H	T/L	7.50	6.75	120	120	5070	4850	33.3	9.8	8.0	17	619	15.5	81	75
3002635	265/70R19.5	14G	T/L	7.50	6.75, 8.25	110	110	5510	5205	34.3	10.1	8.7	17	604	15.8	81	85

- Use inflation pressure specifications dependant on load.
- Tire construction and material specifications subject to change without notice or obligation.
- S - Single, D - Dual

Recommended Vehicle Types & Position



SMART Flex DH35

New all-season tire designed for variable road conditions



Multi 3D Sipes

The special tread pattern design with multi 3D sipes offers low rolling resistance and outstanding traction.



Innovative Rib Type Tread Pattern Design

Special tread pattern design for low rolling resistance and excellent traction performance across multi applications.



Sizes & Specifications (Pattern Code: DH35)

S-Code	Size	Ply/Load Rating	Type	Measuring Rim	Approved Rim	Max. Air (PSI)		Max. Load (LBS)		Overall Diameter (inch)	Section Width (inch)	Tread Width (inch)	Tread Depth (32nd inch)	Revs/ Mile	SLR (inch)	Max Speed (mph)	Weight (lbs)
						S	D	S	D								
3003611	225/70R19.5	14G	T/L	6.75	6.00	110	110	3970	3750	32.2	8.8	7.2	17	640	15.1	87	64
3002699	245/70R19.5	14G	T/L	7.50	6.75	110	110	4940	4675	33.2	9.9	8.8	17	623	15.4	81	76
3003716	245/70R19.5	16H	T/L	7.50	6.75	120	120	5070	4850	33.2	9.9	8.8	17	622	15.5	81	77
3002700	265/70R19.5	14G	T/L	7.50	6.75, 8.25	110	110	5070	4675	34.3	10.2	9.3	16	607	15.8	81	86

- Use inflation pressure specifications dependant on load.
- Tire construction and material specifications subject to change without notice or obligation.
- S - Single, D - Dual

Recommended Vehicle Types & Position

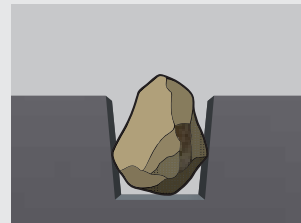


SMART Flex DH55

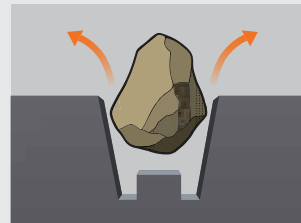
Optimized design for regional haul pick-up & delivery drive position



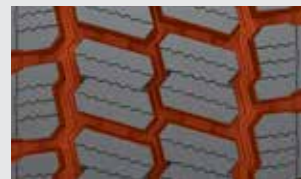
Stone Ejector
Stone ejector technology helps to reduce stone drilling and tire tearing.



Conventional



SMART Flex DH55



Wider 3 Channel Zig-Zag Groove
Wider grooves prevent stone drilling & the tread design provides self cleaning.

Sizes & Specifications (Pattern Code: DH55)

S-Code	Size	Ply/Load Rating	Type	Measuring Rim	Approved Rim	Max. Air (PSI)		Max. Load (LBS)		Overall Diameter (inch)	Section Width (inch)	Tread Width (inch)	Tread Depth (32nd inch)	Revs/ Mile	SLR (inch)	Max Speed (mph)	Weight (lbs)
						S	D	S	D								
3004291	225/70R19.5	14G	T/L	6.75	6.00	110	110	3970	3750	32.4	8.9	7.2	18	642	15.1	87	64
3004293	245/70R19.5	16H	T/L	7.50	6.75	120	120	4940	4675	33.4	9.8	8.1	19	620	15.6	81	74
3004292	265/70R19.5	14G	T/L	7.50	8.25	110	110	5070	4675	34.5	10.2	8.7	20	603	16	81	86

- Use inflation pressure specifications dependant on load.
- Tire construction and material specifications subject to change without notice or obligation.
- S - Single, D - Dual

Recommended Vehicle Types & Position

○ Recommended position



SMART Flex TH31

Trailer tire for variable road conditions



Main Zig-Zag Groove
Provides excellent traction and water drainage under various road conditions.



Groove Slant Design
Slanted groove design helps to mitigate chunking.



Lateral Semi-Groove
Lateral groove helps improve initial traction performance.

Sizes & Specifications (Pattern Code: TH31)

S-Code	Size	Ply/Load Rating	Type	Measuring Rim	Approved Rim	Max. Air (PSI)		Max. Load (LBS)		Overall Diameter (inch)	Section Width (inch)	Tread Width (inch)	Tread Depth (32nd inch)	Revs/ Mile	SLR (inch)	Max Speed (mph)	Weight (lbs)
						S	D	S	D								
3003744	215/75R17.5	16H	T/L	6.00	6.75	123	123	4805	4540	30.5	8.4	7.3	15	672	14.2	65	64
3003745	235/75R17.5	18J	T/L	6.75	7.50	127	127	6005	5675	31.5	9.4	8.6	16	653	14.5	65	69
3003746	245/70R17.5	18J	T/L	7.50	6.75	127	127	6005	5675	31.5	9.8	8.6	16	650	14.5	65	69
* 3003528	255/70R22.5	16H	T/L	7.50	8.25	120	120	5510	5070	36.6	9.8	8.0	17	562	17.1	75	91
3003747	750R16	14G	T/L	6.00	5.50, 6.50, 7.00	110	110	3415	3000	31.8	8.9	5.9	15	648	14.9	65	56
** 3003761	ST225/90R16	14G	T/L	6.00	6.50, 7.00	110	110	4080	3640	31.8	8.6	6.2	12	652	14.7	81	57
** 3003760	ST235/80R16	14G	T/L	6.50	6.00, 7.00, 7.50, 8.00	110	110	4080	3640	30.8	9.2	7.1	12	671	14.3	81	59
** 3003734	ST235/85R16	14G	T/L	6.50	6.00, 7.00, 7.50	110	110	4400	3860	31.6	9.3	7.1	12	653	14.6	81	60

- Use inflation pressure specifications dependant on load.
- Tire construction and material specifications subject to change without notice or obligation.
- S - Single, D - Dual
- * 4 Grooves: 255/70R22.5 only, not 3PMSF
- ** Exclusive only for Special Trailer

Recommended Vehicle Types & Position

○ Recommended position





SMART Work

Smart Work AM09(+)

Smart Work DM09

Smart Work AU57

Smart Work AM15(+)

AH32

DM04

SMART Work AM09(+)

All-position tire for mixed usage and enhanced on/off road performance



Polygonal Blocks And Zig-Zag Grooves
Ensure an excellent traction and braking performance both on site and on the road.



Extra Wide Tread Pattern
The extra wide tread pattern with a closed shoulder design and integrated lugs supplies driving stability and a prolonged tread life.



Stone Ejectors
Ensure grooves are kept clear at all times by using an additional rubber material to force unwanted debris out.



Sizes & Specifications (Pattern Code: AM09)

S-Code	Size	Ply/Load Rating	Type	Measuring Rim	Approved Rim	Max. Air (PSI)		Max. Load (LBS)		Overall Diameter (inch)	Section Width (inch)	Tread Width (inch)	Tread Depth (32nd inch)	Revs/ Mile	SLR (inch)	Max Speed (mph)	Weight (lbs)
						S	D	S	D								
3002703	11R22.5	16H	T/L	8.25	7.50	120	120	6610	6005	41.7	11.3	8.8	24	494	19.5	68	125
*3002557	11R24.5	16H	T/L	8.25	7.50	120	120	7160	6610	43.7	11.3	8.8	24	472	20.2	65	131
3002698	12R22.5	16H	T/L	9.00	8.25	120	120	7390	6780	42.9	12.0	9.2	24	483	20.0	65	137
*3003590	255/70R22.5	16H	T/L	7.50	8.25	120	120	5510	5070	36.7	9.9	8.3	19	559	16.9	75	95

Sizes & Specifications (Pattern Code: AM09+)

S-Code	Size	Ply Rating	Type	Measuring Rim	Approved Rim	Max. Air (PSI)		Max. Load (LBS)		Overall Diameter (inch)	Section Width (inch)	Tread Width (inch)	Tread Depth (32nd inch)	Revs/ Mile	SLR (inch)	Max Speed (mph)	Weight (lbs)
						S	D	S	D								
3002789	315/80R22.5	20L	T/L	9.00	9.75	130	130	10000	9090	42.6	12.5	10.4	22	485	19.6	65	151

- * 4 Grooves: 315/80R22.5 AM09+ only
- Use inflation pressure specifications dependant on load.
- Tire construction and material specifications subject to change without notice or obligation.
- S - Single, D - Dual
- * not 3PMSF

Recommended Vehicle Types & Position ○ Recommended position



SMART Work DM09

Polygonal blocks and aggressive groove design for toughness on site and stability on the road



Directional Pattern
The directional pattern is adopted for excellent handling meaning better traction performance is provided even in wet and muddy conditions.



Interblock Tie-Bar
The interblock tie-bar at the center guarantees outstanding straight driving performance and impact dispersion for blocks, thereby improving durability.



Lateral Asymmetrical Grooves
Regularly misaligned lateral grooves help to mitigate impact burst.



Sizes & Specifications (Pattern Code: DM09)

S-Code	Size	Ply/Load Rating	Type	Measuring Rim	Approved Rim	Max. Air (PSI)		Max. Load (LBS)		Overall Diameter (inch)	Section Width (inch)	Tread Width (inch)	Tread Depth (32nd inch)	Revs/ Mile	SLR (inch)	Max Speed (mph)	Weight (lbs)
						S	D	S	D								
3002891	11R22.5	16H	T/L	8.25	7.50	120	120	6610	6005	42.2	11.2	9.6	30	493	19.8	68	135
3003591	11R24.5	16H	T/L	8.25	7.50	120	120	7160	6610	44.0	11.3	9.6	29	471	20.7	65	143
3003394	315/80R22.5	20L	T/L	9.00	9.75	130	130	9090	8270	43.0	12.6	10.7	27	482	19.9	68	161

- Use inflation pressure specifications dependant on load.
- Tire construction and material specifications subject to change without notice or obligation.
- S - Single, D - Dual

Recommended Vehicle Types & Position ○ Recommended position



SMART Work AU57

Built for longer life, reinforced for durability

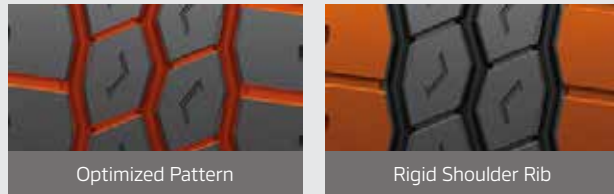


Sidewall Protector

Applying optimized protectors to reinforce sidewall against scrub and punctures.

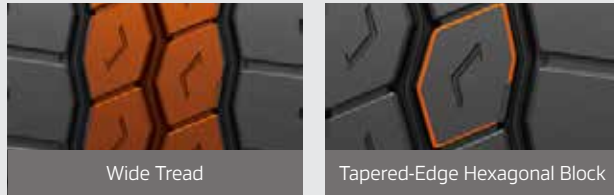
Optimized Pattern & Rigid Shoulder Rib

The unique pattern design mitigates uneven wear and provides excellent traction and control in urban use.



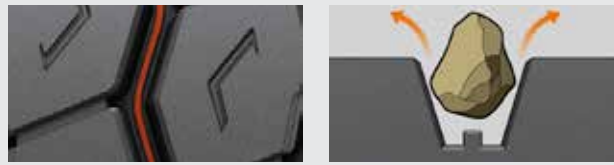
Wide Tread & Tapered-Edge Hexagonal Blocks

Wide Tread provides better grip and mileage. Tapered-Edge Hexagonal Blocks for stability and crack resistance.



Stone Ejector

Designed to increase casing durability, making it more retreadable and helping to extend the use of materials.



Sizes & Specifications (Pattern Code: AU57)

S-Code	Size	Ply/Load Rating	Type	Measuring Rim	Approved Rim	Max. Air (PSI)		Max. Load (LBS)		Overall Diameter (inch)	Section Width (inch)	Tread Width (inch)	Tread Depth (32nd inch)	Revs/ Mile	SLR (inch)	Max Speed (mph)	Weight (lbs)
						S	D	S	D								
3003979	315/80R22.5	20L	T/L	9.00	9.75	130	130	10000	9090	42.8	12.6	10.9	23	482	19.6	65	163

- Use inflation pressure specifications dependant on load.
- Tire construction and material specifications subject to change without notice or obligation.
- S - Single, D - Dual
- *3PMSF will be added in 2026

Recommended Vehicle Types & Position



SMART Work AM15(+)

All-Position radial tire for on and off-road conditions



Extra-Wide Tread Blocks And Deep Grooves

Ensure ultra high mileage.



Open Shoulder Blocks With Optimized Tie-Bars

Prevents irregular wear and provide excellent traction performance for off-road conditions.



Extra-Wide Grooves

Designed for excellent stone rejection and improved traction.

Sizes & Specifications (Pattern Code: AM15)

S-Code	Size	Ply/Load Rating	Type	Measuring Rim	Approved Rim	Tire Single		Overall Diameter (inch)	Section Width (inch)	Tread Width (inch)	Tread Depth (32nd inch)	Revs/ Mile	SLR (inch)	Max Speed (mph)	Weight (lbs)
						Max. Air (PSI)	Max. Load (LBS)								
3001934	425/65R22.5	20L	T/L	12.25	13.00	120	11400	44.7	16.3	12.8	23	462	20.6	68	200
3002160	445/65R22.5	20L	T/L	14.00	13.00	130	12800	45.9	17.5	13.9	24	449	21.2	68	216

Sizes & Specifications (Pattern Code: AM15+)

S-Code	Size	Ply/Load Rating	Type	Measuring Rim	Approved Rim	Max. Air (PSI)		Max. Load (LBS)		Overall Diameter (inch)	Section Width (inch)	Tread Width (inch)	Tread Depth (32nd inch)	Revs/ Mile	SLR (inch)	Max Speed (mph)	Weight (lbs)
						S	D	S	D								
3002179	275/70R22.5	16H	T/L	8.25	7.50	131	131	6945	6395	38.2	11.0	9.4	23	542	17.8	68	113
3002813	385/65R22.5	18J	T/L	11.75	12.25	120	-	9370	-	42.5	14.9	12.0	23	485	19.6	75	166

- Use inflation pressure specifications dependant on load.
- Tire construction and material specifications subject to change without notice or obligation.
- S - Single, D - Dual

Recommended Vehicle Types & Position



AH32

All-position tire for regional haul conditions

SMARTEC
HANKOOK TBR TECHNOLOGY

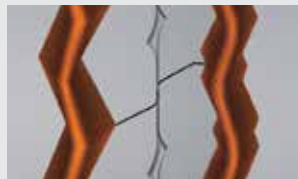
DMO4

Drive tire for off-road conditions

UMS M+S



Optimised Rib Width
Improved mileage performance.



Asymmetric Groove Angle
Mitigates stone retention.



Shoulder Lug
Improved chip-cut performance at shoulder.



Sizes & Specifications (Pattern Code: AH32)

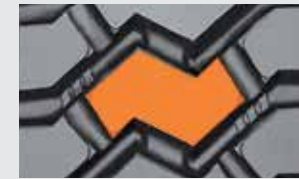
S-Code	Size	Ply/Load Rating	Type	Measuring Rim	Approved Rim	Tire Single		Overall Diameter (inch)	Section Width (inch)	Tread Width (inch)	Tread Depth (32nd inch)	Revs/Mile	SLR (inch)	Max Speed (mph)	Weight (lbs)
						Max. Air (PSI)	Max. Load (LBS)								
3003169	385/65R22.5	18J	T/L	11.75	12.25	120	9370	42.6	15.1	12.1	21	481	19.8	75	171
3003520	425/65R22.5	20L	T/L	12.25	13.00	120	11400	44.5	16.3	12.3	20	463	20.4	75	189

- Use inflation pressure specifications dependant on load.
- Tire construction and material specifications subject to change without notice or obligation.
- S - Single, D - Dual

Recommended Vehicle Types & Position ○ Recommended position



Aggressive Lug Tread Pattern
Aggressive lug tread pattern with open shoulder enhances powerful grip and improves self-cleaning capability.



Massive Tread Blocks
Massive tread blocks and specific tread compound offer superb resistance against cuts and penetrations.



Four-Belt Construction
Robust four-belt construction with a specific protection layer delivers extra-long casing life.



Sizes & Specifications (Pattern Code: DMO4)

S-Code	Size	Ply/Load Rating	Type	Measuring Rim	Approved Rim	Max. Air (PSI)		Max. Load (LBS)		Overall Diameter (inch)	Section Width (inch)	Tread Width (inch)	Tread Depth (32nd inch)	Revs/Mile	SLR (inch)	Max Speed (mph)	Weight (lbs)
						S	D	S	D								
* 3000140	11R22.5	16H	T/L	8.25	7.50	120	120	6610	6005	42.3	11.1	8.7	31	490	19.8	65	134
3000920	11R24.5	16H	T/L	8.25	7.50	120	120	7160	6610	44.1	11.1	8.5	29	471	20.6	65	135

- Use inflation pressure specifications dependant on load.
- Tire construction and material specifications subject to change without notice or obligation.
- S - Single, D - Dual
- **M+S 3000140 only**

Recommended Vehicle Types & Position ○ Recommended position





SMART City
SMART Touring
e-SMART City

Smart City AU04

Smart Touring AL22

e Smart City AU56

SMART City AU04

Optimized design for city traffic with frequent stop and go driving



3D Sipes

Inner block consists of 3-dimensional sipes that increase the block stiffness and thus significantly improve the tire traction and wet grip, vehicle handling and mileage performance.

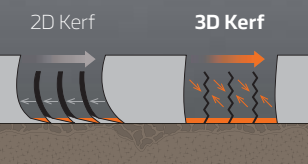


Conventional

SMART City AU04

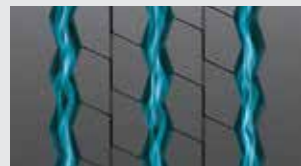


Prevents heel and toe wear.



Multi-Zig-Zag Groove

Amended zig-zag grooves together with an optimal block arrangement provide an improved traction performance.



Sizes & Specifications (Pattern Code: AU04)

S-Code	Size	Ply/Load Rating	Type	Measuring Rim	Approved Rim	Max. Air (PSI)		Max. Load (LBS)		Overall Diameter (inch)	Section Width (inch)	Tread Width (inch)	Tread Depth (32nd inch)	Revs/Mile	SLR (inch)	Max Speed (mph)	Weight (lbs)
						S	D	S	D								
3004050	305/70R22.5	20L	T/L	9.00	8.25	130	130	8050	7390	39.5	12.0	9.8	22	520	18.3	68	130

- Use inflation pressure specifications dependant on load.
- Tire construction and material specifications subject to change without notice or obligation.
- S - Single, D - Dual

Recommended Vehicle Types & Position ○ Recommended position



SMART Touring AL22

New all-position coach bus tire



Tread Wear Equalized Stepper (T.W.E.S)

Controlled tearing and wearing.



Center Rib

Long mileage and supreme handling performance.



Zig-Zag and Straight Grooves

Provide excellent traction on highways.

Sizes & Specifications (Pattern Code: AL22)

S-Code	Size	Ply/Load Rating	Type	Measuring Rim	Approved Rim	Max. Air (PSI)		Max. Load (LBS)		Overall Diameter (inch)	Section Width (inch)	Tread Width (inch)	Tread Depth (32nd inch)	Revs/Mile	SLR (inch)	Max Speed (mph)	Weight (lbs)
						S	D	S	D								
3003129	315/80R22.5	20L	T/L	9.00	9.75	130	130	9090	8270	42.4	12.4	9.5	18	487	19.6	75	135

- Use inflation pressure specifications dependant on load.
- Tire construction and material specifications subject to change without notice or obligation.
- S - Single, D - Dual

Recommended Vehicle Types & Position ○ Recommended position



Basic Tire Knowledge

Basic Tire Knowledge Definitions

Overall Diameter	Diameter of the tire from tread surface to tread surface while inflated but unladen.
Tread Width	The width of the tread surface, designed for contact with the road.
Static Loaded Radius	Distance from the centre of the axle to the ground at the rated load and inflation pressure.
Revs/Mile	Revolutions of the tire per mile.
Rim Width	Distance between the inside of the rim flanges.
Section Height	Distance from the bead seat to the outer tread surface of the inflated tire.
Section Width	Distance between the outer sidewalls of an inflated tire.

$$\text{Aspect Ratio(Series)} = \frac{\text{Section Height}}{\text{Section Width}} \times 100$$

TBR Low-Profile Conversion Chart

Size	Tube Type	Tubeless Type
255/80R22.5	9.00R20	10R22.5
265/75R22.5		
275/80R22.5	10.00R20	11R22.5
295/75R22.5		
275/80R24.5	10.00R22	11R24.5
285/75R24.5		
295/80R22.5	11.00R20	12R22.5
315/80R22.5	12.00R20	13R22.5

Load Range Chart

Load Range (LR)	Ply Rating (PR)
A	2
B	4
C	6
D	8
E	10
F	12
G	14
H	16
J	18
L	20
M	22
N	24

Load Index & Speed Symbol

Size Markings

Marking	295/75R22.5 149/146L
295	Tire section width (295mm)
75	75 Aspect ratio [(section height / section width) x100]
R	R Radial structure
22.5	22.5 Rim diameter (inch)
149	149 Max. load index when mounting single wheels (7,165lbs)
146	146 Max. load index when mounting dual wheels (6,615lbs)
L	L Tire max. driving speed symbol (75mph)

* For example purposes

Speed Symbols [km/h and mph]

Symbol	G	J	K	L	M	N
km/h	90	100	110	120	130	140
mph	56	62	68	75	81	87

Conversion of load index (LI) into load capacities per tire

LI	kg	lb	LI	kg	lb	LI	kg	lb
110	1060	2335	131	1950	4300	152	3550	7825
111	1090	2405	132	2000	4410	153	3650	8045
112	1120	2470	133	2060	4540	154	3750	8265
113	1150	2535	134	2120	4675	155	3875	8545
114	1180	2600	135	2180	4805	156	4000	8820
115	1215	2680	136	2240	4940	157	4125	9095
116	1250	2755	137	2300	5070	158	4250	9370
117	1285	2835	138	2360	5205	159	4375	9645
118	1320	2910	139	2430	5355	160	4500	9920
119	1360	3000	140	2500	5510	161	4625	10195
120	1400	3085	141	2575	5675	162	4750	10470
121	1450	3195	142	2650	5840	163	4875	10745
122	1500	3305	143	2725	6010	164	5000	11025
123	1550	3415	144	2800	6175	165	5150	11355
124	1600	3525	145	2900	6395	166	5300	11685
125	1650	3640	146	3000	6615	167	5450	12015
126	1700	3750	147	3075	6780	168	5600	12345
127	1750	3860	148	3150	6945	169	5800	12785
128	1800	3970	149	3250	7165	170	6000	13230
129	1850	4080	150	3350	7385			
130	1900	4190	151	3450	7605			

Load Inflation Pressure Tables

Tubeless												
Tire Size Tire Designation		The Load Limits (lbs.) at Various Cold Inflation Pressures (psi) (The pressure is minimum for the load)										
Tire size Tire Designation		The Load Limits (lbs.) at Various Cold Inflation Pressures (psi) (The pressure is minimum for the load)										
		80	85	90	95	100	105	110	115	120	125	130
10R22.5	A	16920	17640(E)	18340	19040	19760(F)	20300	20840	21420(G)			
	D	8460	8820(E)	9170	9520	9880(F)	10150	10420	10710(G)			
	S	4480	4675(E)	4850	5025	5205(F)	5360	5515	5675(G)			
11R22.5	A	19040	19800	20820(F)	21660	22500	23360(G)	23580	23800	24020(H)		
	D	9520	9900	10410(F)	10830	11250	11680(G)	11790	11900	12010(H)		
	S	4990	5220	5510(F)	5730	5950	6175(G)	6320	6465	6610(H)		
11R24.5	A	20280	21040	22040(F)	22700	23360	24020(G)	24820	25620	26440(H)		
	D	10140	10520	11020(F)	11350	11680	12010(G)	12410	12810	13220(H)		
	S	5310	5550	5840(F)	6095	6350	6610(G)	6790	6970	7160(H)		
12R22.5	A	20760	21560	22700(F)	23140	23580	24020(G)	25060	26100	27120(H)		
	D	10380	10780	11350(F)	11570	11790	12010(G)	12530	13050	13560(H)		
	S	5450	5690	6005(F)	6205	6405	6610(G)	6870	7130	7390(H)		
255/70R22.5	A	15880	16440	17100	17640	17820	18440	18700(G)	19660	20280(H)		
	D	7940	8220	8550	8820	8910	9220	9350(G)	9830	10140(H)		
	S	4190	4370	4550	4675	4895	5065	5205(G)	5400	5510(H)		
275/80R22.5 LRH, 16	A	18500	19420	20320	21220	22100	22980	23860	24720	25580	26440(H)	
	D	9250	9710	10160	10610	11050	11490	11930	12360	12790	13220(H)	
	S	5010	5260	5505	5750	5990	6230	6465	6700	6930	7165(H)	
295/60R22.5	A	18400	19300	20200	21100	21980	22860	23720	24580	25440	26280	27120(J)
	D	9200	9650	10100	10550	10990	11430	11860	12290	12720	13140	13560(J)
	S	5010	5260	5505	5750	5990	6230	6465	6700	6930	7160	7390(J)
275/70R22.5	A	17340	18200	19060	19900	20740	21560	22380	23200	24000	24780	25580(J)
	D	8670	9100	9530	9950	10370	10780	11190	11600	12000	12390	12790(J)
	S	4705	4940	5170	5400	5625	5850	6070	6290	6510	6725	6940(J)
295/75R22.5 LRG, 14	A	18160	18760	19540	20280(F)	21040	21760	22700(G)				
	D	9080	9380	9770	10140(F)	10520	10880	11350(G)				
	S	4940	5155	5370	5510(F)	5780	5980	6175(G)				
295/75R22.5 LRH, 16	A	22040	22700	23620	24700(F)	25420	26320	27120(G)	28040	28640(H)		
	D	11020	11350	11810	12350(F)	12710	13160	13560(G)	14020	14320(H)		
	S	5510	5675	5905	6175(F)	6355	6580	6780(G)	7010	7160(H)		
315/80R22.5 LRL, 20	A	22700	23360	24280	25580	26180	27080	27760	28840	30440	31640	33080(L)
	D	11350	11680	12140	12790	13090	13540	13880	14420	15220	15820	16540(L)
	S	6175	6415	6670	6940	7190	7440	7610	7920	8270	8690	9090(L)
315/80R22.5 LRL, 20 (AM06,AM09+,AU57)	A	24640	25880	27080	28280	29460	30640	31800	32960	34100	35220	36360(L)
	D	12320	12940	13540	14140	14730	15320	15900	16480	17050	17610	18180(L)
	S	6780	7115	7450	7780	8105	8425	8745	9065	9375	9690	10000(L)
305/70R22.5 LRL, 20	A		21070	21930	23060	23870	24710	25790	26600	27680	28480	29560(L)
	D		10535	10965	11530	11935	12355	12895	13300	13840	14240	14780(L)
	S		5740	5970	6280	6500	6735	7030	7250	7535	7760	8050(L)
285/75R24.5	A	18160	18960	19720	20820(F)	21240	21980	22700(G)	23440	24700(H)		
	D	9080	9480	9860	10410(F)	10620	10990	11350(G)	11720	12350(H)		
	S	4940	5210	5450	5675(F)	5835	6040	6175(G)	6440	6780(H)		

Tubeless												
Tire Size Tire Designation		The Load Limits (lbs.) at Various Cold Inflation Pressures (psi) (The pressure is minimum for the load)										
v		80	85	90	95	100	105	110	115	120	125	130
8R19.5	A	10720(D)	11140	11560	12000(E)	12400	12800	13220(F)				
	D	5360(D)	5570	5780	6000(E)	6200	6400	6610(F)				
	S	2835(D)	2955	3075	3195(E)	3305	3415	3525(F)				
215/75R17.5 LRG, 14	A	11620	12200	12760	13320	13880(G)						
	D	5810	6100	6380	6660	6940(G)						
	S	3085	3240	3390	3540	3690(G)						
215/75R17.5 LRH, 16	A	12700	13320	13960	14580	15180	15780	16380	16980	17560	18160(H)	
	D	6350	6660	6980	7290	7590	7890	8190	8490	8780	9080(H)	
	S	3360	3525	3690	3855	4015	4175	4335	4490	4650	4805(H)	
235/75R17.5 LRH, 16	A	13000	13640	14280	14900	15520	16140	16760(H)				
	D	6500	6820	7140	7450	7760	8070	8380(H)				
	S	3420	3590	3755	3920	4085	4250	4410(H)				
235/75R17.5 LRJ, 18	A	15400	16160	16920	17660	18400	19140	19860	20580	21300	22000	22700(J)
	D	7700	8080	8460	8830	9200	9570	9930	10290	10650	11000	11350(J)
	S	4070	4275	4475	4670	4870	5060	5255	5445	5635	5820	6005(J)
245/70R17.5 LRJ, 18	A	15400	16160	16920	17660	18400	19140	19860	20580	21300	22000	22700(J)
	D	7700	8080	8460	8830	9200	9570	9930	10290	10650	11000	11350(J)
	S	4070	4275	4475	4670	4870	5060	5255	5445	5635	5820	6005(J)
225/70R19.5	A	12000(E)	12460	12980	13660(F)	13960	14460	15000(G)	15420	15880(H)		
	D	6000(E)	6230	6490	6830(F)	6980	7230	7500(G)	7710	7940(H)		
	S	3195(E)	3315	3450	3640(F)	3715	3845	3970(G)	4100	4190(H)		
245/70R19.5 (AH35 LRG, 14, DH07 LRH, 16)	A	13660	14060	14620	15440(F)	15760	16300	17200(G)	17380	18160(H)		
	D	6830	7030	7310	7720(F)	7880	8150	8600(G)	8690	9080(H)		
	S	3640	3740	3890	4080(F)	4190	4335	4540(G)	4620	4805(H)		
245/70R19.5 LRG, 14	A	14500	15220	15920	16640	17320	18020	18700(G)				
	D	7250	7610	7960	8320	8660	9010	9350(G)				
	S	3830	4020	4205	4395	4575	4760	4940(G)				
245/70R19.5 LRH, 16	A	14020	14720	15420	16100	16760	17440	18100	18760	19400(H)		
	D	7010	7360	7710	8050	8380	8720	9050	9380	9700(H)		
	S	3665	3850	4030	4205	4380	4555	4730	4900	5070(H)		
265/70R19.5 LRG, 14 (DH35,DH07)	A	15000	15720	16380	17200	17620	17660	18700(G)				
	D	7500	7860	8190	8600	8810	8830	9350(G)				
	S	3970	4180	4355	4540	4685	4850	5070(G)				
265/70R19.5 LRG, 14 (AH35)	A	16140	16940	17740	18520	19300	20060	20820(G)				
	D	8070	8470	8870	9260	9650	10030	10410(G)				
	S	4270	4485	4695	4900	5105	5310	5510(G)				
385/65R22.5 LRL, 20	S	6725	7060	7390	7720	8040	8360	8680	8995	9305	9615	9920(L)
385/65R22.5 LRJ, 18	S	6940	7350	7650	8050	8230	8510	8820	9050	9370(J)		
425/65R22.5	S	8270	8740	9100	9370	9790	10100	10500(J)	10700	11400(L)		
445/65R22.5	S	9090	9480	9870	10200(H)	10600	11000	11400	11700	12300(L)	12600	12800
445/50R22.5	S	7310	7680	8030	8390	8740	9090	9370(J)	9780	10200(L)		

*OPERATING SPEED LESS THAN 55 MPH

Tire load limits at various inflation pressures are based upon Tire and Rim Association (TRA) standards and tables, except where there is no specification established by the TRA. In these few cases, the tire design is based upon the European Tire and Rim Technical Organization (ETRTO) whose standards govern these tire designs. To obtain recommendations for tires run in non-standard applications, customers and dealers should contact the Hankook Technical Service Department.

A = Load Limit across an Axle (4 Tires) D = Load Limit across Dual tires (2 Tires) S = Load Limit for a single tire

Truck Tire Markings

All truck tires are marked to represent their structure, construction type, dimensions and manufacturer/brand.

In addition, they should carry the Department of Transportation (DOT) code and/or International Organization for Standardization (ISO) symbols.

Below is a typical Hankook tire that illustrates ISO markings.

- 1 **Brand Name:** Manufacturer name of the tire.
- 2 **E-mark and Number:** It means the tire is certified in Europe. In addition, KS, UTQG, CCC, NORM, etc. are engraved to signify the certification of each country.
- 3 **Regroovable:** It denotes the tire is available to use 50% more tread by cutting main groove deeper. It is only done by tire service professionals.
- 4 **Tubeless:** This tire is tubeless structure. (tires composed of a tube have "Tube type" marking)
- 5 **Radial tire:** Indicates the construction: R (for radial), D (for bias [diagonal]) or B (for belted, an extinct kind of construction).
- 6 **Pattern Name:** Pattern name of the tire.
- 7 **Load & Inflation Pressure:** Tire maximum load and inflation pressure as to standard. It varies from size to size.
- 8 **TWI Mark:** Tread Wear Indicator or TWI shows the minimum level of tread wear which must be conformed.
- 9 **DOT Code:** This is a code required by the Department of Transport (DOT) which certifies the tire manufacturer's compliance with DOT tire safety standards. The last four digits indicates the date of manufacture of the tire. For example, a tire of DOT ending with 0122 was produced in the 1st week of 2022.
- 10 **Tire Size:** Tire size which shows tire section width (mm), aspect ratio, rim inch.
- 11 **Safety Warning:** Critical information customers should know for safety.



WARRANTY TERMS

This limited warranty applies to the original purchaser of any new truck and bus tire manufactured by Hankook Tire and Technology bearing Department of Transportation prescribed tire identification numbers. Eligible tires shall be used on the vehicle on which they were originally installed according to the vehicle manufacturer's or Hankook's recommendation. This warranty applies if all following qualification requirements are met:

1. The tire was purchased after January 1, 2026.
2. The tire is a size, load rating and speed rating equal to or greater than that recommended by the vehicle manufacturer.
3. The tire has not become unserviceable due to a condition listed under WHAT IS NOT COVERED
4. The tire is 6 years from the date of purchase, or 6 years from the date of manufacture without any purchase document.

WHAT IS WARRANTED AND FOR HOW LONG

Should any tire covered by this limited warranty become unusable due to a workmanship or material related condition during its usable tread life (more than 2/32nds remaining tread), Hankook will give a credit on the following conditions:

1. During the first 2/32^{nds} of the original usable tread and within one year: Tire will be replaced with a comparable new Hankook produced tire free of charge. Applicable taxes on the new tire and cost of mounting, balancing and any other charges in connection with the replacement of the tire are required to be paid by the owner.
2. After the first 2/32^{nds} of the original usable tread or after one year from date of purchase, whichever occurs first: The amount of the credit will be determined by multiplying the Dealer's current selling price for the same tire (excluding taxes) by the percentage of tread remaining, based on the original tread depth.

* Free replacement workmanship warranty is not applicable to snow tires.

WHAT IS NOT COVERED

This limited warranty does not apply to tires which are being serviced under the following conditions:

- » Originally purchased outside of the United States or Puerto Rico.
- » Willful Abuse/Collision/Wreck/Fire.
- » Continued use while flat or severe under/over inflation.
- » Road Hazards including (without limitation), puncture, cut, impact break, stone drill, bruise, bulge, snag, collision.
- » Irregular wear due to vehicle mechanical reason and/or improper maintenance.
- » Rapid/premature/worn out treadwear from (without limitation): vehicle mechanical reason, and/or improper maintenance.
- » Conditions resulting from (without limitation): improper mounting/demounting, underinflation, overinflation, improper tire size, improper repair, defect in vehicle, abuse, improper storage, modifications/alterations.
- » Ride disturbance complaints after 2/32^{nds} tread wear or 1 year from date of purchase, whichever occurs first.
- » With 2/32^{nds} or less of remaining tread depth.
- » With the serial/DOT number cut or buffed.
- » Racing and Misapplication.
- » Loss of time or use, inconvenience or any incidental or consequential damage.
- » Tires worn beyond original full tread depth will not have FET reimbursed.
- » Tires with minor cosmetic weather/ozone cracking.
- » Ozone or weather cracking on tires over four (4) years old from the date of manufacture.
- » Note: Consequential damage mentioned above may not apply to you based on States limitation.

OWNER'S GENERAL OBLIGATION

In order to be eligible for HANKOOK's limited warranty program, the owner must observe the following:

- » Present the tire to an authorized Hankook dealer in the United States of America or Puerto Rico.
- » Submit or present a copy of the original purchase receipt.
- » Sign a completed Hankook Claim Form filled by any authorized dealer.
- » If the tire owner abuses the tires and/or fails to do the following (but not limited to): observing safety warnings, maintaining proper inflation pressure, maintain vehicle alignment, expected tire performance and/or life may not be achieved and safety cannot be ensured.
- » Tires presented for a warranty claim remain the property of the consumer, and Hankook bears no responsibility for lost or damaged tires which are in the possession or control of any dealer. Should a claim be disputed, the consumer must make the tire available for further inspection.

CASING WARRANTY

1. If a Hankook steel radial truck or bus tire becomes unserviceable or cannot be retreaded due to a manufacturer-related condition, Hankook will provide a predetermined casing allowance. This casing warranty applies in the event a steel radial truck or bus tire will not accept the first retread due to an adjustable condition.
5. The standard casing warranty is valid for up to two (2) retreads and remains in effect for six (6) years from the tire's date of manufacture. The warranty expires based on whichever condition occurs first.
2. For AL52, AL21, AL50, DL15+, DL21, TL21, and DL52, the casing warranty allows unlimited retreads for seven (7) years from the date of manufacture. Casing value remains the same after the 3rd retread. Expiration of this warranty is determined solely by the date of manufacture as molded on the tire.
3. For the e3 Wide series (size 445/50R22.5 in patterns DL07, TL07, TL21, DL12, DL21), the casing warranty covers up to three (3) retread lives for six (6) years from the date of manufacture. The warranty expires based on whichever condition occurs first.
4. Tires used in mining or logging applications are not covered under this warranty.
5. Casing and retread allowance details are provided in the following section.
6. Casings exhibiting ozone or weather cracking that are more than four (4) years old from the date of manufacture are not covered under this warranty..

Casings with ozone or weather cracking that are over 4 years old from date of manufacture, are not covered under this warranty

RETREAD ALLOWANCE

Retread allowance is an additional credit provided on top of the casing allowance based on the remaining tread depth of the retreaded tire, regardless of the retread manufacturer.

Tread Depth Remaining (Inches)	Total Allowance for Retreaded Tires (Retread Allowance + Casing Allowance)
More than 14/32	\$45.00 + Casing Allowance
8/32 to 14/32	\$30.00 + Casing Allowance
Less than 8/32	Casing Allowance Only

- » Tire with rim sizes 19.5 inches or smaller are not eligible for the Retread Allowance.
- » Tires used in mining or logging service are not covered under this warranty.

CASING ALLOWANCE

Category	Size	No of Retread				Remark
		None	1st	2nd	3rd	
Premium Pattern :	295/60R22.5	\$130	\$110	\$90	\$70	Casing value will be same after 3rd times retread
AL52, AL21, AL50, DL52, DL21, TL21, TL52, AH51, DH51	295/75R22.5					
	285/75R24.5					
	11R22.5					
e ³ Wide Pattern:	445/50R22.5	\$150	\$120	\$90	\$70	
DL12, DL21, TL21						
Normal	11R22.5	\$110	\$90	\$70	-	
	11R24.5					
	255/70R22.5					
	275/70R22.5					
	295/75R22.5					
	305/70R22.5					
Normal	9.00R20	\$90	\$80	\$70	-	
	10.00R20					
	11.00R20					
	12.00R20					
Normal	215/75R17.5	\$60	\$40	\$30	-	
	235/75R17.5					
	8R19.5					

DISCLAIMER

THIS WARRANTY IS MADE IN LIEU OF ALL OTHER WARRANTIES, EXPRESS OR IMPLIED, AND HANKOOK EXPRESSLY DISCLAIMS ALL IMPLIED WARRANTIES OF MERCHANTABILITY OR FITNESS FOR A PARTICULAR PURPOSE. SOME U.S. STATES AND/OR CANADIAN PROVINCES DO NOT ALLOW LIMITATIONS IN THE DURATION OF AN IMPLIED WARRANTY, SO THE ABOVE MAY NOT APPLY TO YOU.

TO THE EXTENT PERMITTED BY LAW, HANKOOK DISCLAIMS LIABILITY FOR ALL CONSEQUENTIAL AND INCIDENTAL DAMAGES.

THE REMEDIES SET FORTH IN THIS LIMITED WARRANTY ARE THE SOLE AND EXCLUSIVE REMEDIES FOR BREACH OF WARRANTY.

Some U.S. States and/or Canadian provinces do not allow the exclusion or limitation of incidental or consequential damages, so the above limitation or exclusion may not apply to you. This Limited Warranty gives you specific legal rights, and you may also have other rights which vary from U.S. State or Canadian province to province.

THIS IS THE ONLY EXPRESS WARRANTY MADE BY HANKOOK. NO HANKOOK EMPLOYEE, RETAILER, OR DEALER HAS THE AUTHORITY TO MAKE ANY WARRANTY, REPRESENTATION, PROMISE OR AGREEMENT ON BEHALF OF HANKOOK EXCEPT AS EXPRESSLY WRITTEN IN THIS TOTAL WARRANTY. IN OBSERVANCE OF U.S. FEDERAL LAW, THIS WARRANTY HAS BEEN DESIGNATED A "LIMITED WARRANTY."

ADDITIONAL INFORMATION OR CUSTOMER SERVICE

If you have any question on product warranty, please first contact your nearest Hankook Tire Dealer. For dealer information, or if your question has not been handled to your satisfaction, contact the Hankook Tire Technical Department.

HANKOOK TIRE AMERICA CORPORATION
1-800-HANKOOK
333 Commerce St. Suite 600 Nashville, TN 37201

For warranty information, please visit hankooktire.com/us or call 1-800-HANKOOK, option 1 for Technical Dept. or via email at Warranty.Support@Hankookn.com