

Curious Minds, Confident Learners at SBR

A guide to learning In our Primary School Programme

Sekolah Bogor Raya Primary School implements the International Baccalaureate Primary Years Programme (IB-PYP) for students aged 6–12 years.

The IB-PYP provides learners with diverse educational experiences that encourage them to become creative, active, compassionate, and confident lifelong learners. Through inquiry-based learning, students develop knowledge, skills, and understanding while building independence, responsibility, and strong character.

The programme emphasizes student agency, collaboration, and real-world connections, enabling learners to take ownership of their learning and thrive academically, socially, and emotionally.



Apply Now

sekolahbogorraya.com/apply



Schedule a Visit

sekolahbogorraya.com/visit

Learning together, inspiring success

www.sekolahbogorraya.com



Sekolah Bogor Raya



sekolahbogorraya



sekolahbogorraya

IB Learner Profile & Values

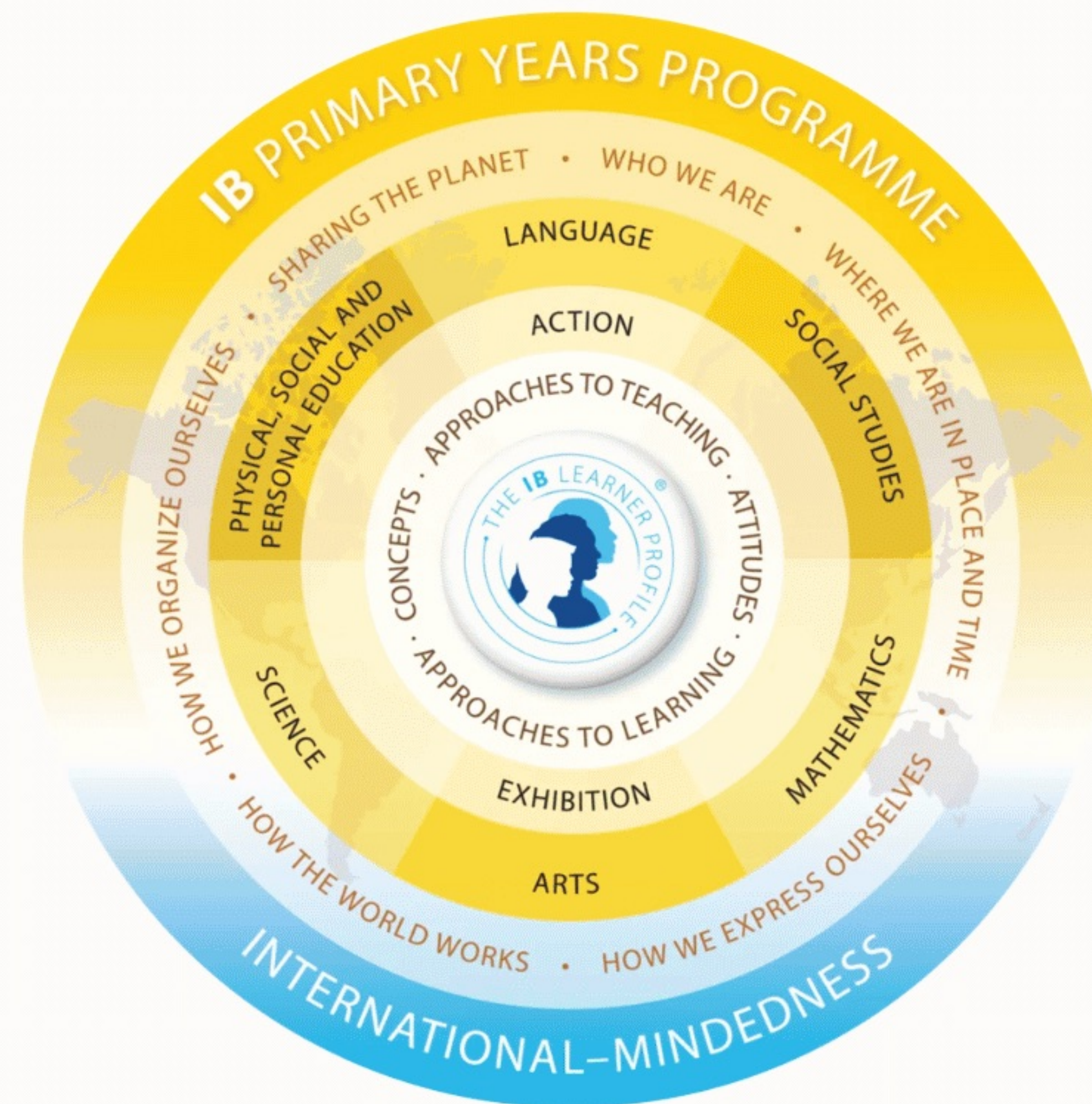
SBR Primary School



Sekolah Bogor Raya
Learning together, inspiring success

The PYP framework is guided by the IB Learner Profile, which encourages students to become inquirers, thinkers, communicators, and reflective learners. These attributes promote positive character development and international-mindedness while aligning closely with Sekolah Bogor Raya's core values: Discipline, Equality, Self-Awareness, Integrity, Respect, Empathy, and Resilience.

As a transdisciplinary programme, the PYP supports the academic, social, emotional, physical, and cultural development of each child. Students engage in meaningful learning experiences across English, Bahasa Indonesia, Mathematics, ICT, Studies of Society and Environment, Science, Visual Arts, Music, and Physical Education.



Learning together, inspiring success

www.sekolahbogorraya.com

Sekolah Bogor Raya sekolahbogorraya sekolahbogorraya




Teachers at Sekolah Bogor Raya Primary School work collaboratively to deliver high-quality learning experiences aligned with curriculum standards and student needs. Through regular planning, assessment moderation, and data-informed teaching practices, they ensure consistency and support student growth across all grade levels.

Assessment is used to monitor progress, inform learning, and communicate achievement clearly with students and families. Two formal conferences are held each year—Three-Way Conferences and Student-Led Conferences—strengthening the partnership between home and school while encouraging students to reflect on their learning journey.

Students develop confidence, character, and a global perspective through cultural celebrations, co-curricular programmes, and enrichment opportunities. Students are encouraged to pursue their interests, discover new talents, and challenge themselves through external assessments and competitions, including the International Competitions and Assessments for Schools (ICAS) and the Japan International Science and Mathematics Olympiads (JISMO).

Learning together, inspiring success

www.sekolahbogorraya.com

 Sekolah Bogor Raya  sekolahbogorraya  sekolahbogorraya

Primary Facilities

SBR Primary School



Apply Now

sekolahbogorraya.com/apply



Schedule a Visit

sekolahbogorraya.com/visit



Library



Cafeteria



Swimming Pool



Soccer Field



Art Room



Playground



Classroom



ICT Lab



Traditional Music Room

Music Room