

Little Learners, Big Discoveries at SBR

A guide to learning In our Playgroup & Kindergarten (PG-K) Programme

Sekolah Bogor Raya Early Years Playgroup & Kindergarten (PG-K) implements the International Baccalaureate Primary Years Programme (IB-PYP) as its early years curriculum for children aged 2–6 years.

The IB-PYP exposes learners to diverse educational experiences that encourage them to become creative, active, compassionate, and confident lifelong learners. The programme emphasizes inquiry, play, and holistic development, enabling children to construct meaning through real-life learning contexts.



Apply Now

sekolahbogorraya.com/apply



Schedule a Visit

sekolahbogorraya.com/visit

Learning together, inspiring success

www.sekolahbogorraya.com



Sekolah Bogor Raya



sekolahbogorraya



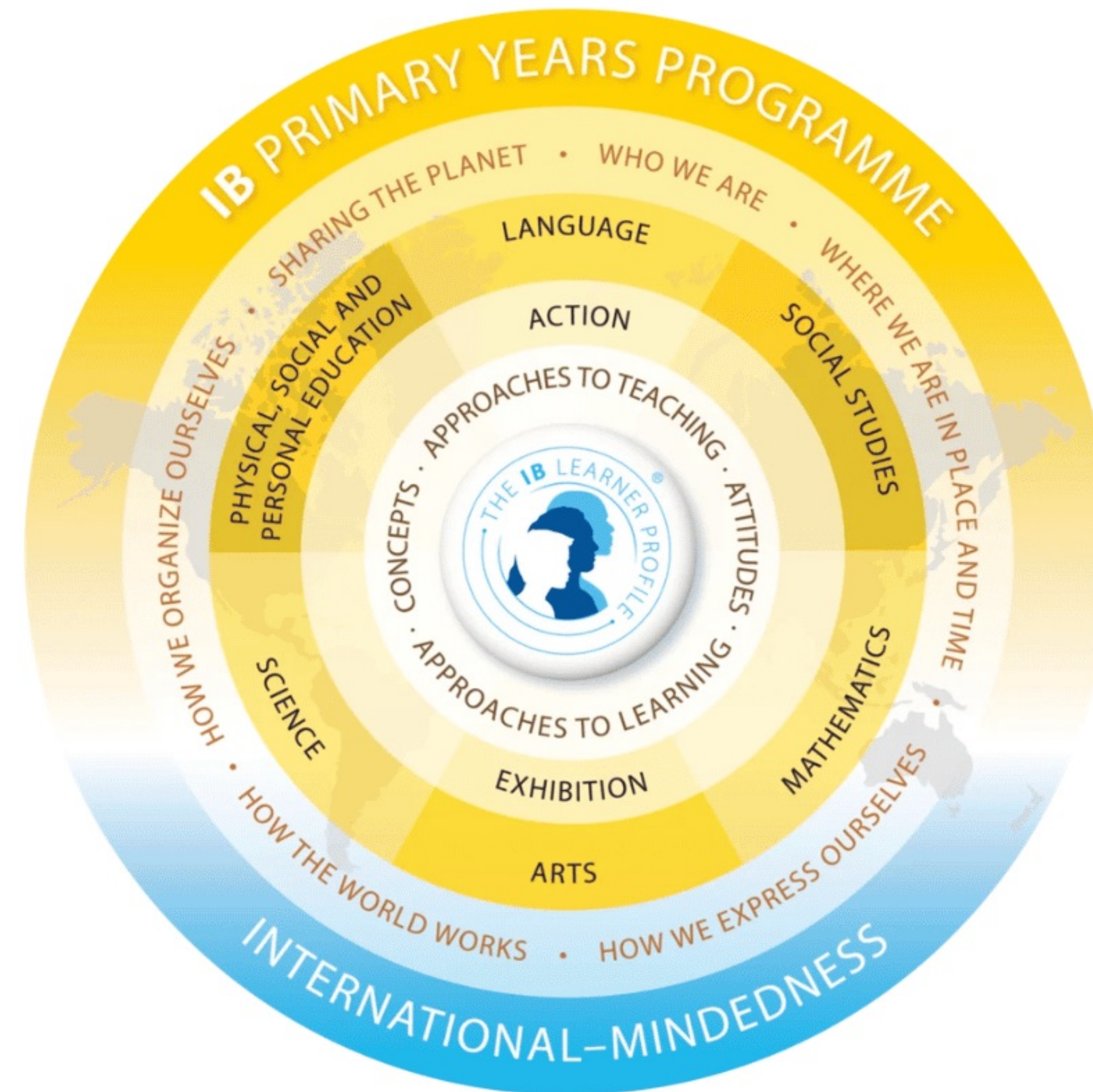
sekolahbogorraya

IB Learner Profile & Values

SBR PG-K Programme

The PYP framework is guided by the IB Learner Profile, which encourages students to be inquirers, thinkers, communicators, risk-takers, and reflective, balanced individuals — attributes that promote positive character development and international-mindedness from Early Years onwards.

These qualities align closely with Sekolah Bogor Raya's core values: Discipline, Equality, Self-Awareness, Integrity, Respect, Empathy, and Resilience. Together, they prepare students to thrive academically, socially, and emotionally in an ever-changing world.



Learning together, inspiring success

www.sekolahbogorraya.com

 Sekolah Bogor Raya  [sekolahbogorraya](https://www.instagram.com/sekolahbogorraya)  [sekolahbogorraya](https://www.youtube.com/sekolahbogorraya)

Fully Accredited by

WASC
ACCREDITING COMMISSION FOR SCHOOLS


Primary Years
Programme

Learning & Growth

SBR PG-K Programme

At Sekolah Bogor Raya, children are encouraged to become active participants in their learning journey. Through play-based inquiry, they develop confidence, curiosity, and independence while expressing their ideas, making choices, and taking ownership of their learning.

Guided by the IB Primary Years Programme and the national curriculum, students explore meaningful concepts through hands-on experiences such as pretend play, field trips, discussions, experiments, projects, presentations, and exhibitions. Learning is connected through six transdisciplinary themes that help children make sense of the world around them.

Differentiated learning experiences, reflection, and participation in selected competitions support holistic development while fostering confidence, resilience, teamwork, and a lifelong love of learning.

For a detailed overview of the IB Primary Years Programme and its transdisciplinary themes, please refer to the IB-PYP Programme Brochure.

Learning together, inspiring success

www.sekolahbogorraya.com

 Sekolah Bogor Raya  sekolahbogorraya  sekolahbogorraya

PG-K Facilities

SBR PG-K Programme



Apply Now

sekolahbogorraya.com/apply



Schedule a Visit

sekolahbogorraya.com/visit



Library



Outdoor Playground



Indoor Playground



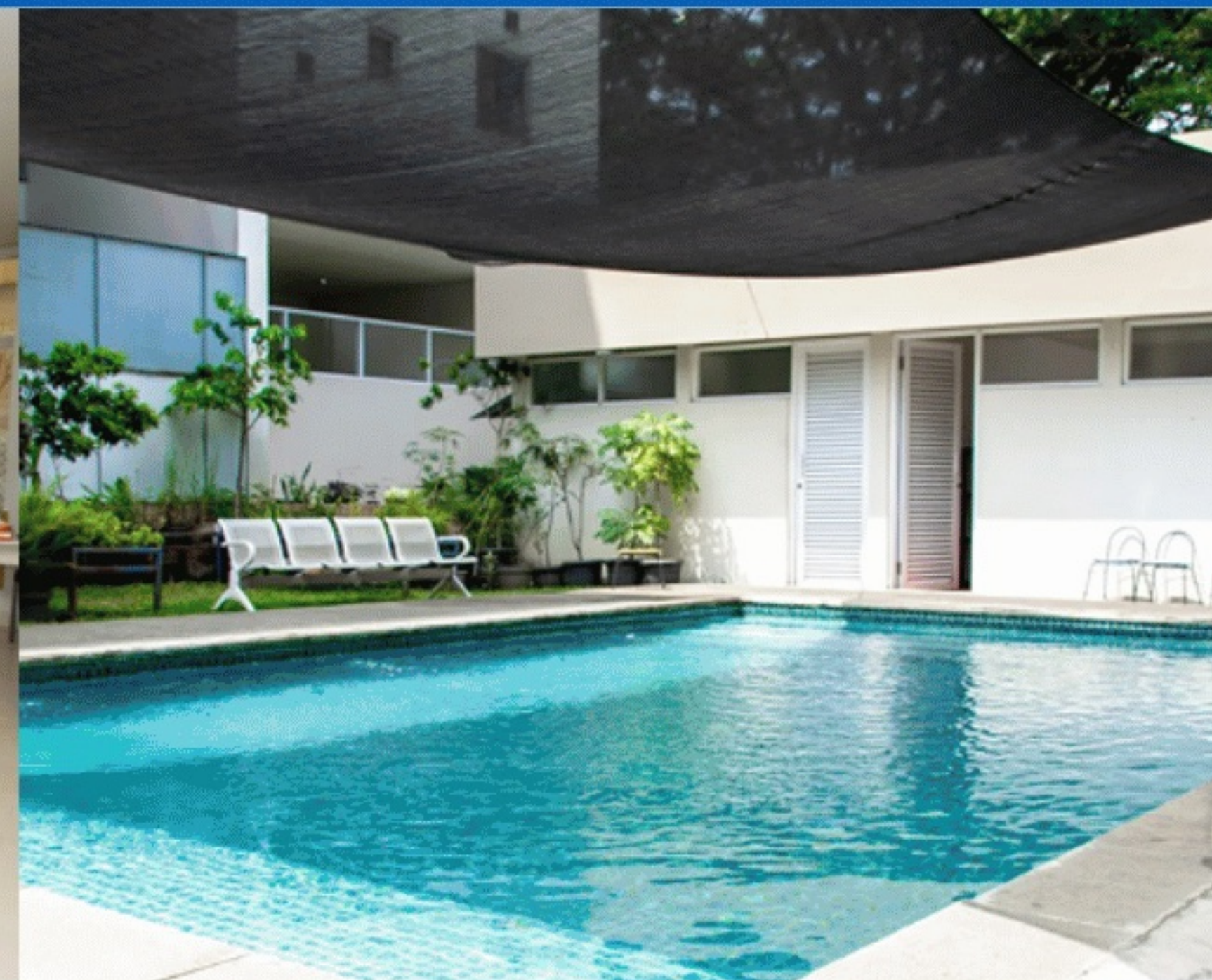
ICT Lab



Cafeteria



Classroom



Swimming Pool



Music Room

