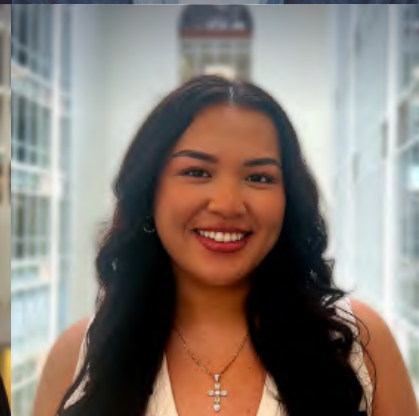


# The Human Intelligence Platform

---

**GLG**



See  
yourself  
here.





# A WELCOME FROM OUR CEO

I'm excited to introduce you to GLG.

This is a pivotal time in your life. The first steps in your career can be some of the most interesting and formative as you start to pave your own path.

GLG is a special place to begin that journey. Alongside colleagues around the world, you'll interact with clients who are on the cutting edge of their industries and experts who are at the heights of accomplished careers in every field. You'll have the opportunity to work on projects covering a range of topics and sectors, from emerging markets and innovative products to some of the biggest mergers and deals – all with the goal of connecting our clients to the insights they need to make important decisions. Every day is different.

Our diverse team – which spans 12 countries – consists of curious and bright people who bring an array of interests and backgrounds to our community. And as a company, we're committed to helping GLGers learn and grow to develop lifelong skills and advance their careers.

We're delighted about the possibility of having you contribute to our success and grow with us as a member of the team. I hope you enjoy learning more about the work we do and consider joining us to share your unique skills and experiences.

— Gemma Postlethwaite, CEO

# WHO WE ARE

GLG is the founder of the expert economy, **connecting professionals with industry experts** to help them make smarter decisions.

With our AI-driven platform, our clients go from expert conversations **to insights and ideas faster than ever before.**

At GLG, you'll be right in the action, helping businesses around the globe find the knowledge **they need to succeed.**

Join us, and you'll be part of a team that empowers decision makers to make confident choices **through one-on-one interactions and expert content.**

**Confidently start your career with GLG** and play a key role in shaping the future of business insights.



# WHO YOU ARE



You're stepping into the working world, eager to make a real impact. **You're not afraid to roll up your sleeves** and dive in, no matter the direction your day takes you.

When your friends or teammates need help, you're the one they go to. That drive **to solve problems** is what makes you stand out.



You're always introducing friends to each other because you know that **fostering connections** helps everyone grow.

Whether you're leading the charge or lending a hand, you'll take on the role your team needs — **giving everyone the confidence to succeed together.**



**Build a career that feeds your passion for learning** and keeps you moving forward. Graduation is just the start, and we're excited to meet you.

# YOUR PEERS

You'll work alongside people who show up for our clients and each other, share what they know, and push you to grow — whether it's your first week or your third year.

Watch and read more about real GLGers: [@lifeatglg](#)

## MEET ED



COLUMBIA UNIVERSITY CLASS OF 2023, SWIMMER & PEOPLE PERSON

Growing up in a military family taught me how to **adapt quickly and connect with new people**. Collegiate swimming taught me discipline — never missed practice. Med school was the plan, but I like people more than solo research. Now I help clients connect with the right experts and still get to meet someone new every day. Off the clock, I'm big on board games and **sci-fi movie nights**.

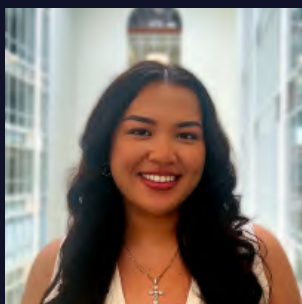
## MEET LAYNA



VILLANOVA UNIVERSITY CLASS OF 2024, BARISTA & LIBRARY ARCHIVIST

In college, I was **always moving** — between lab hours, barista shifts, and working in the library archives. I loved it all, especially dancing in the kitchen with my roommates. I'm still always on the go and believe **the comfort zone is overrated**. Now I apply that attitude to learning all about the business world — with **great people around me**.

## MEET VIVIAN



PENNSYLVANIA STATE UNIVERSITY CLASS OF 2023, TA & GREAT COOK

As a **first-gen college student**, everything felt new. I found my way by working on my **short ribs recipe** and being a TA for women's health. I realized I love learning how healthcare works and helping people with that knowledge. Now I talk to physicians and researchers every day and **help clients tackle big questions** — with a calm but spunky energy that keeps things moving.

# WHAT YOU'LL DO & LEARN AS AN ASSOCIATE

When clients are looking to inform a decision, they come to GLG for the specialized expertise they need. This role is founded on the ability to connect clients to the right subject-matter experts, supported by our AI-driven match engine.



As an Associate, you will develop **strong, transferable business skills:**

- Excel in client service, communication, time management, negotiation, problem-solving, and project management.
- Execute on multiple projects, learn to pay attention to detail, prioritize workflows, and achieve commercial targets.
- Collaborate with colleagues on and across both regional and global teams.

**We value career advancement and mobility.** After succeeding as an Associate, you'll have the opportunity to take on a manager role where you will lead and develop a team of Associates. Many of our GLGers pursue mobility opportunities across our global offices.

# GET AHEAD BEFORE YOU GRADUATE

Spend your summer gaining the **skills, connections, and confidence** to launch your career. GLG's **10-week internship program** in our New York City headquarters gives you a hands-on preview of life as an Associate — while building your professional toolkit and network. You'll dive right in:

- **Work on real projects** — conduct research, generate leads, connect with Network Members, and coordinate scheduling, all with the support and guidance of experienced managers.
- **Learn from the best** — shadow peers, join client calls, and contribute to team discussions in line with our service model.
- **Take the lead** — develop and present your own project to GLG leadership.

Top performers may be offered a full-time Associate role following the program.

“I find myself looking forward to each workday. I’m so fortunate to be part of a team defined by kindness, support, and a commitment to my development. The experience has already pushed me to grow in ways I didn’t expect.”

2025 Summer Intern



# SEE YOURSELF HERE

GLG Associates in the U.S. are based primarily out of our headquarters in **New York City**.

Our offices are designed to:

- Foster collaboration and learning through open, flexible spaces
- Create a globally connected environment, working alongside colleagues in London, Mumbai, Singapore, and beyond
- Enable a phone-first culture that keeps you closely connected to clients and experts around the world



## NEW YORK CITY

GLG NYC, our headquarters, is in the heart of Midtown Manhattan, across the street from the famous Grand Central Terminal.

The neighborhood contains a mix of high-end restaurants, pizza joints, and after-work bars that give GLGers countless places to socialize and eat near the office.



# WHAT WE OFFER

## SKILLS DEVELOPMENT

You will learn and build new skills during our robust onboarding and coaching program as well as through on-the-ground experience with your team. From day one, you'll also have opportunities to explore the world's most exciting industries and connect with their leaders. We provide continued training and development opportunities to bolster your newfound talents. Your progress will position you for success throughout your career.

## HEALTH AND BENEFITS

We offer healthcare that delivers mind-body wellness from uniquely low costs to programs and services that keep up with the most forward-thinking organizations in the world. You'll have access to health and planning resources that go beyond corporate discounts, ClassPass, office baristas, and 401(k) matching. The world continues to move around you, and we want to help you through your challenges and achievements. From counseling to meditation and more, we've got you covered.

## INCLUSIVITY

We operate seven global Diversity Networks, providing safe and welcoming spaces for employees to talk openly, create community, build solidarity, and educate their colleagues about their experiences. Each Diversity Network is open to all GLGers regardless of race, gender, religion, or other protected status.

## COMMUNITY IMPACT

Your impact will extend beyond the conference rooms to your communities. We actively support the communities in which our employees live and work. As a GLGer, you'll have the opportunity to serve as an ambassador for GLG's values by nominating nonprofits to receive pro bono support or even contributing your time and skills through our Social Impact programs.

# APPLY TODAY

Applying? Here's a sneak peek at **your journey to become a GLGer.**

1

## **Submit an Application:**

Head to the GLG Campus Recruiting site at [glginsights.com/campus-recruitment](https://glginsights.com/campus-recruitment). Looks like a good fit? Apply and the recruiting team will be in touch with you.

2

## **HR Interview:**

The first interview is a conversation with a campus recruiter. You'll get to learn more about GLG's business model and the Associate role. Of course, we'll get to know you better too.

3

## **First Round Interview:**

Next, you'll get the chance to speak with an interviewer to learn more about the role and begin evaluating your skills.

4

## **Case Study and Review:**

The next step will include a sample project that will give you the opportunity to dive into the types of projects our Associates focus on.

5

## **Final Round:**

This conversation will allow us to complete the evaluation process and give you the opportunity to ask questions and learn more about the role.



# GLG

## LEARN MORE



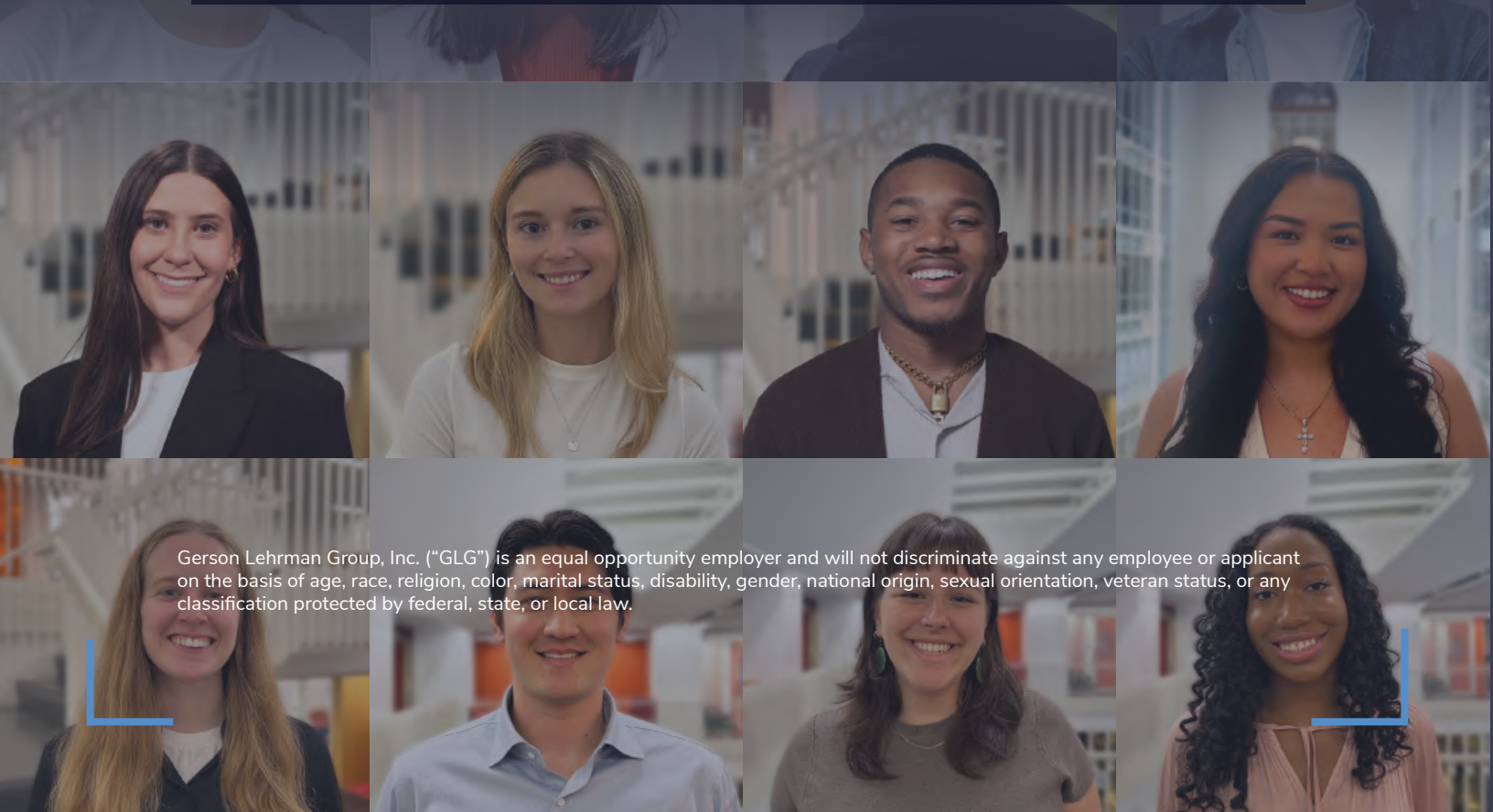
## CONTACT US

✉ [campus@glgroup.com](mailto:campus@glgroup.com)

## FOLLOW US

📷 [@lifeatglg](https://www.instagram.com/lifeatglg)

in [GLG](https://www.linkedin.com/company/GLG)



Gerson Lehrman Group, Inc. ("GLG") is an equal opportunity employer and will not discriminate against any employee or applicant on the basis of age, race, religion, color, marital status, disability, gender, national origin, sexual orientation, veteran status, or any classification protected by federal, state, or local law.