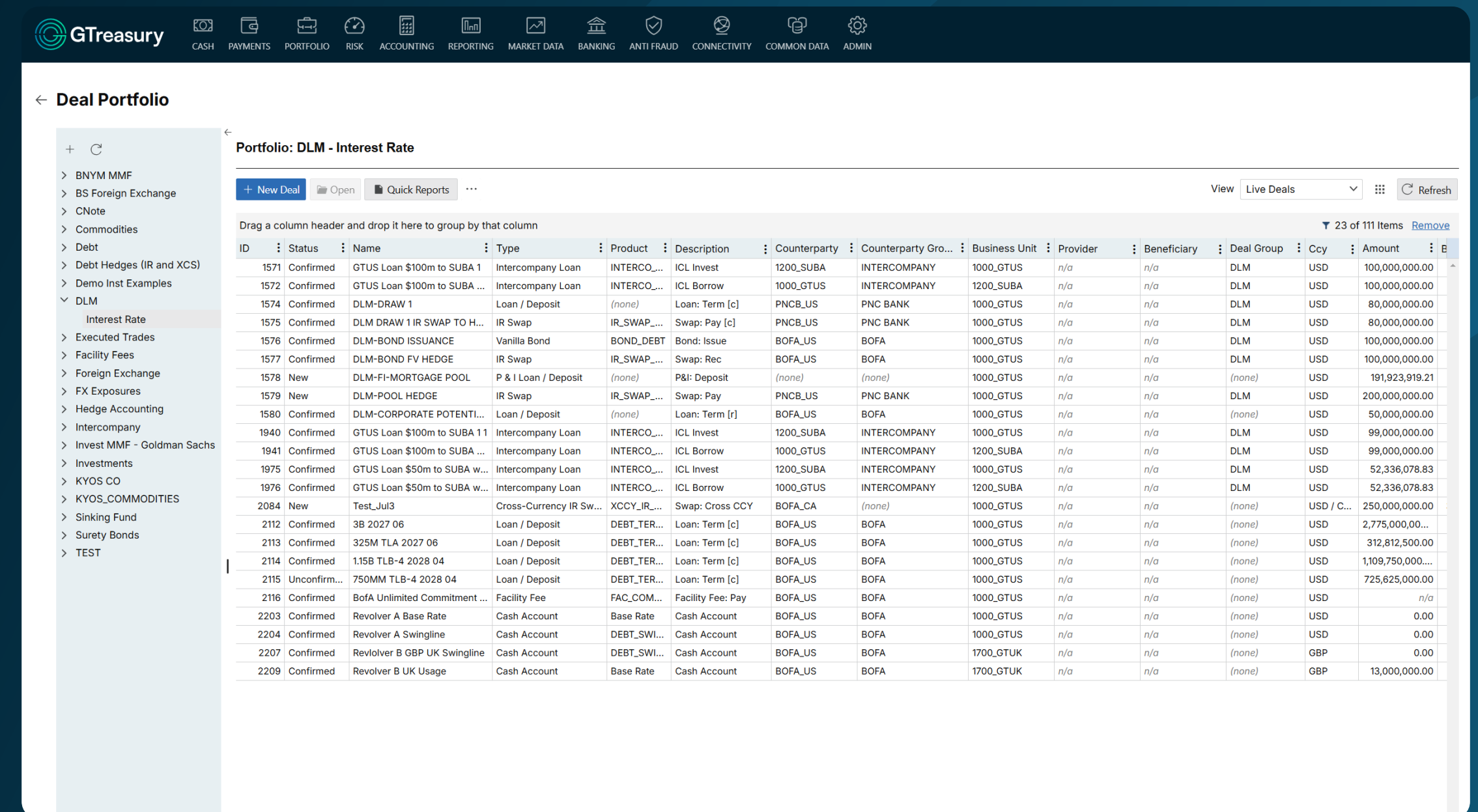


# Gain Clarity and Control over your Financial Instruments

One of the biggest challenges that treasury teams have today is being able to see a full picture of their liquidity. CFOs and finance teams also struggle with fragmented workflows, limited portfolio visibility, and increasing compliance demands, making it difficult to optimize liquidity, mitigate risks, and ensure accurate reporting.

GTreasury's Financial Instruments solution centralizes portfolio management, streamlines workflows, provides real-time liquidity updates, and consolidates financial data into a single dashboard, reducing manual efforts and improving cash visibility. With tools for compliance, risk analysis, and reporting, it empowers finance teams to make confident, data-driven decisions and optimize financial strategies.



The screenshot displays the 'Deal Portfolio' interface for 'Portfolio: DLM - Interest Rate'. It features a navigation sidebar on the left with categories like BNYM MMF, BS Foreign Exchange, CNote, Commodities, Debt, Debt Hedges (IR and XCS), Demo Inst Examples, DLM (selected), Executed Trades, Facility Fees, Foreign Exchange, FX Exposures, Hedge Accounting, Intercompany, Invest MMF - Goldman Sachs, Investments, KYOS CO, KYOS\_COMMODITIES, Sinking Fund, Surety Bonds, and TEST. The main area shows a table of 23 items with columns for ID, Status, Name, Type, Product, Description, Counterparty, Counterparty Gro..., Business Unit, Provider, Beneficiary, Deal Group, Ccy, and Amount. The table includes various financial instruments such as loans, swaps, and bonds.

ID	Status	Name	Type	Product	Description	Counterparty	Counterparty Gro...	Business Unit	Provider	Beneficiary	Deal Group	Ccy	Amount
1571	Confirmed	GTUS Loan \$100m to SUBA 1	Intercompany Loan	INTERCO...	ICL Invest	1200_SUBA	INTERCOMPANY	1000_GTUS	n/a	n/a	DLM	USD	100,000,000.00
1572	Confirmed	GTUS Loan \$100m to SUBA ...	Intercompany Loan	INTERCO...	ICL Borrow	1000_GTUS	INTERCOMPANY	1200_SUBA	n/a	n/a	DLM	USD	100,000,000.00
1574	Confirmed	DLM-DRAW 1	Loan / Deposit	(none)	Loan: Term [c]	PNCB_US	PNC BANK	1000_GTUS	n/a	n/a	DLM	USD	80,000,000.00
1575	Confirmed	DLM DRAW 1 IR SWAP TO H...	IR Swap	IR_SWAP...	Swap: Pay [c]	PNCB_US	PNC BANK	1000_GTUS	n/a	n/a	DLM	USD	80,000,000.00
1576	Confirmed	DLM-BOND ISSUANCE	Vanilla Bond	BOND_DEBT	Bond: Issue	BOFA_US	BOFA	1000_GTUS	n/a	n/a	DLM	USD	100,000,000.00
1577	Confirmed	DLM-BOND FV HEDGE	IR Swap	IR_SWAP...	Swap: Rec	BOFA_US	BOFA	1000_GTUS	n/a	n/a	DLM	USD	100,000,000.00
1578	New	DLM-FH-MORTGAGE POOL	P & I Loan / Deposit	(none)	P&I: Deposit	(none)	(none)	1000_GTUS	n/a	n/a	(none)	USD	191,923,919.21
1579	New	DLM-POOL HEDGE	IR Swap	IR_SWAP...	Swap: Pay	PNCB_US	PNC BANK	1000_GTUS	n/a	n/a	DLM	USD	200,000,000.00
1580	Confirmed	DLM-CORPORATE POTENTI...	Loan / Deposit	(none)	Loan: Term [f]	BOFA_US	BOFA	1000_GTUS	n/a	n/a	(none)	USD	50,000,000.00
1940	Confirmed	GTUS Loan \$100m to SUBA 1 1	Intercompany Loan	INTERCO...	ICL Invest	1200_SUBA	INTERCOMPANY	1000_GTUS	n/a	n/a	DLM	USD	99,000,000.00
1941	Confirmed	GTUS Loan \$100m to SUBA ...	Intercompany Loan	INTERCO...	ICL Borrow	1000_GTUS	INTERCOMPANY	1200_SUBA	n/a	n/a	DLM	USD	99,000,000.00
1975	Confirmed	GTUS Loan \$50m to SUBA w...	Intercompany Loan	INTERCO...	ICL Invest	1200_SUBA	INTERCOMPANY	1000_GTUS	n/a	n/a	DLM	USD	52,336,078.83
1976	Confirmed	GTUS Loan \$50m to SUBA w...	Intercompany Loan	INTERCO...	ICL Borrow	1000_GTUS	INTERCOMPANY	1200_SUBA	n/a	n/a	DLM	USD	52,336,078.83
2084	New	Test-Jul3	Cross-Currency IR Sw...	XCCY_IR...	Swap: Cross CCY	BOFA_CA	(none)	1000_GTUS	n/a	n/a	(none)	USD / C...	250,000,000.00
2112	Confirmed	3B 2027 06	Loan / Deposit	DEBT_TER...	Loan: Term [c]	BOFA_US	BOFA	1000_GTUS	n/a	n/a	(none)	USD	2,775,000.00...
2113	Confirmed	325M TLA 2027 06	Loan / Deposit	DEBT_TER...	Loan: Term [c]	BOFA_US	BOFA	1000_GTUS	n/a	n/a	(none)	USD	312,812,500.00
2114	Confirmed	115B TLB-4 2028 04	Loan / Deposit	DEBT_TER...	Loan: Term [c]	BOFA_US	BOFA	1000_GTUS	n/a	n/a	(none)	USD	1,109,750,000...
2115	Unconfirm...	750MM TLB-4 2028 04	Loan / Deposit	DEBT_TER...	Loan: Term [c]	BOFA_US	BOFA	1000_GTUS	n/a	n/a	(none)	USD	725,825,000.00
2116	Confirmed	BoFA Unlimited Commitment ...	Facility Fee	FAC_COM...	Facility Fee: Pay	BOFA_US	BOFA	1000_GTUS	n/a	n/a	(none)	USD	n/a
2203	Confirmed	Revolver A Base Rate	Cash Account	Base Rate	Cash Account	BOFA_US	BOFA	1000_GTUS	n/a	n/a	(none)	USD	0.00
2204	Confirmed	Revolver A Swingline	Cash Account	DEBT_SWI...	Cash Account	BOFA_US	BOFA	1000_GTUS	n/a	n/a	(none)	USD	0.00
2207	Confirmed	Revolver B GBP UK Swingline	Cash Account	DEBT_SWI...	Cash Account	BOFA_US	BOFA	1700_GTUK	n/a	n/a	(none)	GBP	0.00
2209	Confirmed	Revolver B UK Usage	Cash Account	Base Rate	Cash Account	BOFA_US	BOFA	1700_GTUK	n/a	n/a	(none)	GBP	13,000,000.00

---

## Centralized trade management works harder for you

GTreasury consolidates your treasury trades to facilitate holistic or targeted portfolio management. This provides the ability to assign trade details, standard settlement instructions, general ledger event mappings and unique reference fields for customized reporting.

Your daily dealing workflows are enhanced with robust pre-trade compliance enabling a full range of counterparty, concentration, maturity and dealer limits to be checked prior to execution.

- You can act on downstream events including resets, confirmations, exercise/ expiry, renewals, cash positions, payments, valuations, credit exposure, forecasts and accounting
- You have the ability to close out transactions, manage custom cash flow schedules and renegotiate terms
- Post-trade operations from updating custom cash flow schedules through closeouts and term renegotiations complete the picture

Through a robust control framework, you will gain assuredness from the implementation of a segregation of duties enabling marker/checker processes and gain stronger audit trails. Your Fair Value Reporting Disclosures will also be upgraded with market leading mark-to-market valuations for either vanilla or complex securities and derivative instruments.

## Dynamic dashboards present the big picture

Trade and derived data including MTM, valuation breakdowns and accrual are available for inclusion into user configurable reports and graphical dashboards, enabling the creation of a holistic view of all financial instrument workflows, scheduled cash and non-cash events, exposures and positions.

Financial instrument data is also incorporated into Risk Analytics solutions to create a full range of risk reports including hedge cover reporting, cash flow stress tests and what-if transaction analysis. High level graphical snapshots and detailed drill downs allow you to take a strategic approach to FX, interest rate and commodity hedging. With this broad range of views of debt and investment positions, you can manage liquidity and volatility with confidence.

---

## Full integration provides total visibility

When your treasury includes our cash management, accounting and payment modules, you can capture all operational and financial-related cash flows, create journal entries for accounting, and review all details against each instrument and associated payments, interest, accruals, etc. in one comprehensive, user-definable and dynamic worksheet report.

Fully integrated modules to support real-time financial and liquidity positions, payments and accounting

---

Manage your portfolio at macro or micro levels

---

Assign unique reference fields to any transaction for customized reporting

---

Attach documentation for added clarity for stronger audit trails

---

Benefit from comprehensive facility management including multi-level tranche and fee tracking

---

Interface with industry-leading data providers to automatically calculate and produce mark-to-market and sensitivity analysis for all instruments in your portfolio

---

Track and allocate instruments by asset class

---

Leverage standardized templates to manage simple and complex instruments



# Essential Tools for Confident Cash Decisions



## Debt and Investments

- Working capital instruments include facilities (including fees), call accounts, guarantees, discount securities, certificates of deposit and repos
- Capital markets instruments include bonds, term and P&I loans, asset-backed securities and floating rate notes
- Ability to do auto-rolls and rollovers, close out transactions, manage custom cashflow schedules and renegotiate terms



## Connectivity and STP

- Seamlessly integrate to external platforms, including money market providers and FX providers such as FXall, FXGo and 360T
- Achieve real-time straight-through-processing via our large API library, including automatic deal ticket creation and automatic creation of back-to-back transactions for those operations utilizing a central treasury model



## Interest Rate Derivatives

- Instruments include interest rate swaps (vanilla, basis, LIBOR and OIS), cross-currency swaps, swaptions (European and Bermudan), caps/collars/floors
- Ability to close out transactions, manage custom cash flow schedules and renegotiate terms



## Facilities

- All facilities and guarantees are recorded and processed in the system
- Utilization fees, upfront fees and unutilized fees can be calculated
- Limit usage and drawdown schedule reports



## Inflation

- Instruments include principal and interest indexed inflation exposures, bonds and swaps
- Ability to close out transactions, manage custom cash flow schedules and renegotiate terms



## Foreign Exchange

- Instruments include currency exposures, FX spots, FX forwards (including non-deliverable), FX swaps, FX options and FX collars
- Ability to pre-deliver and roll exposures and forwards as well as capture back-to-back derivatives



## Credit valuation adjustments

- Manage your debt and hedging programs and comply with IFRS9 hedge accounting requirements as well as IFRS13 requirements for credit valuation adjustments (CVA) using advanced techniques often required for derivatives



## Intercompany Loans

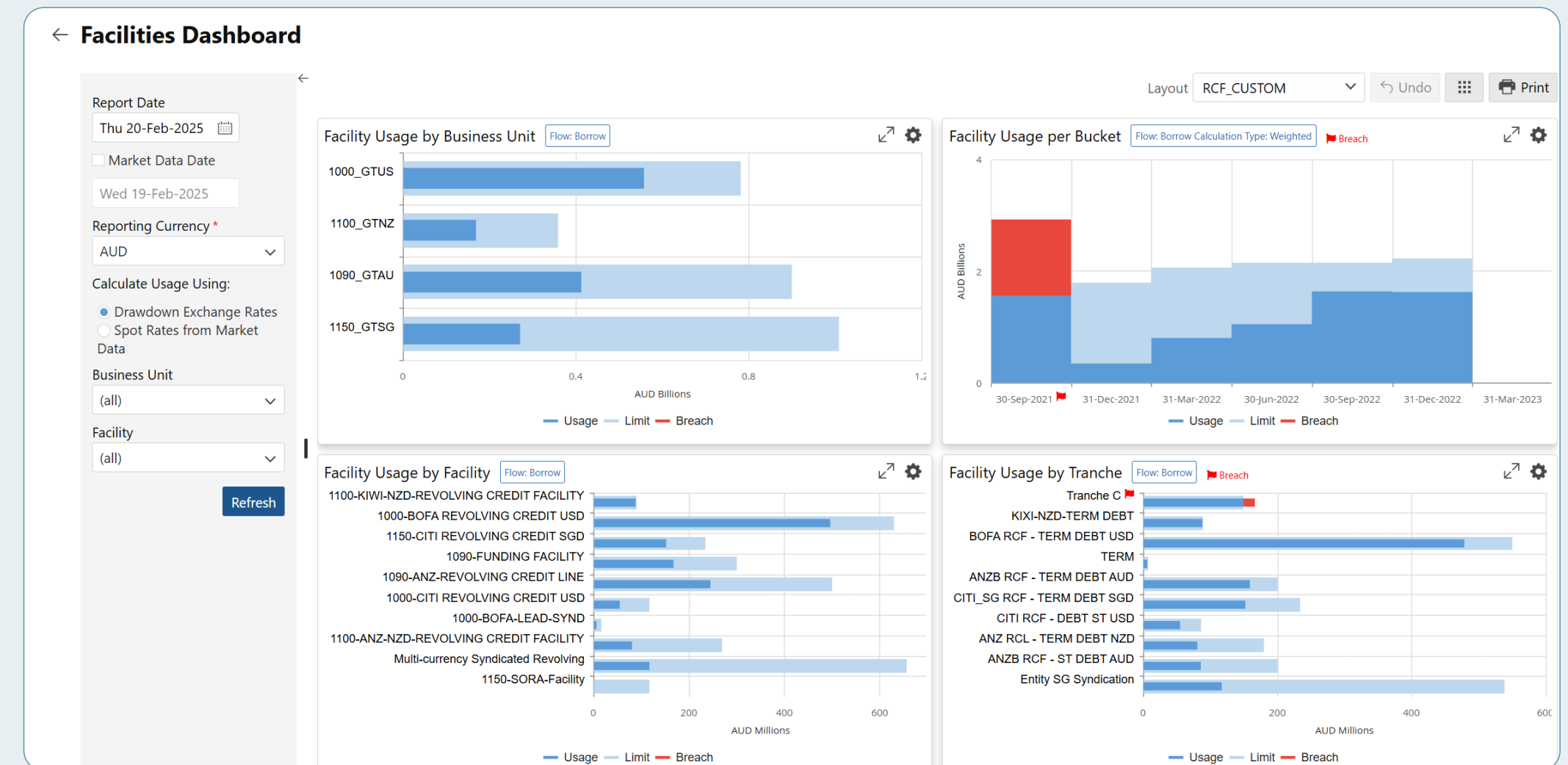
- Instruments include term and ad-hoc loans
- Ability to mirror trades, generate double-sided accounting, capitalize interest, support withholding tax, close out transactions, manage custom cash flow schedules, and renegotiate terms

# Gain Visual Insights on Financial Instruments with Dynamic Dashboards



## FX Dashboard

The FX Dashboard reports exposure and hedge positions in multiple currencies at any given point of time.



## Facilities Dashboard

The flexible credit Facilities Dashboard provides easy visuals to track facility and tranche limits, usage and available balances

# Unified Financial Data for Smarter Risk Management



## Risk Management

GTreasury's Financial Instruments seamlessly integrate with the Risk Management solution, enabling real-time data flow for comprehensive risk analysis. The platform consolidates and analyzes exposure data, applying behavioral assumptions and advanced techniques like cash flow-at-risk and value-at-risk.

This seamless integration ensures that hedging strategies and market movement simulations are directly linked to accurate, up-to-date financial instrument data, supporting confident decision-making and effective risk management.



## Hedge Accounting

Financial instruments data flows seamlessly into GTreasury's Hedge Accounting module, enabling easy designation and testing of hedge relationships for cash flow, fair value, or net investment hedges.

The module ensures compliance with IFRS 9, ASC 815, IFRS 13, and ASU No. 2017-12, while simplifying effectiveness testing and proactive monitoring of evolving standards. It also supports customizable hypothetical derivatives, detailed financial risk disclosures, and compliance with Big 4 audit requirements, leveraging advanced quantitative methods like regression analysis to assess hedge effectiveness.



## GTreasury Enhances Cash Management with BNY Mellon & Goldman Sachs

GTreasury provides access to both BNY Mellon and Goldman Sachs' investment platform, allowing treasury teams to engage with investment portfolios through a streamlined, on-demand connectivity solution—ClearConnect. This integration links both platforms offering consolidated view of money market funds and cash positions on GTreasury dashboard, real-time workflows for trading, confirmation, and reconciliation. It connects with 23 of the largest global money market fund providers and over 200 funds across seven major currencies.

## About GTreasury

GTreasury provides CFOs and Treasurers with **The Clarity to Act** on strategic financial decisions with the world's most adaptable treasury platform, empowering them to face the challenges of today and tomorrow. Because each company faces different points of complexity and needs, our industry-leading solutions are purposefully designed to support every stage of treasury complexity, from Cash Visibility and Forecasting to Payments, Risk, Debt, and Investments.

With GTreasury, financial leaders gain comprehensive connectivity across all banks and ERPs to build an orchestrated data environment, enabling rapid value realization with implementations up and running in weeks. Plus, our unmatched industry expertise ensures your continued success through dedicated guidance and top-tier support.

Trusted by over 1,000 customers across 160 countries, GTreasury provides treasury and finance teams with the ability to connect, compile, and manage mission-critical data to optimize cash flows and capital structures. To learn more, visit [GTreasury.com](https://GTreasury.com).

GTreasury is headquartered in **Chicago**, with locations serving EMEA (**London**, **Geneva** and **Dublin**) and APAC (**Sydney**, and **Singapore**).

## Contact

---

<b>North America</b>	847.847.3706
----------------------	--------------

---

<b>APAC (Sydney)</b>	+61 2.9262.6969
----------------------	-----------------

---

### EMEA

London	+44 203 787 4843
--------	------------------

Dublin	+353 1 524 0552
--------	-----------------

Geneva	+41 22 311 13 83
--------	------------------



 [GTreasury.com](https://GTreasury.com)

 [ContactUs@GTreasury.com](mailto:ContactUs@GTreasury.com)



© 2025 GTreasury. All Rights Reserved.