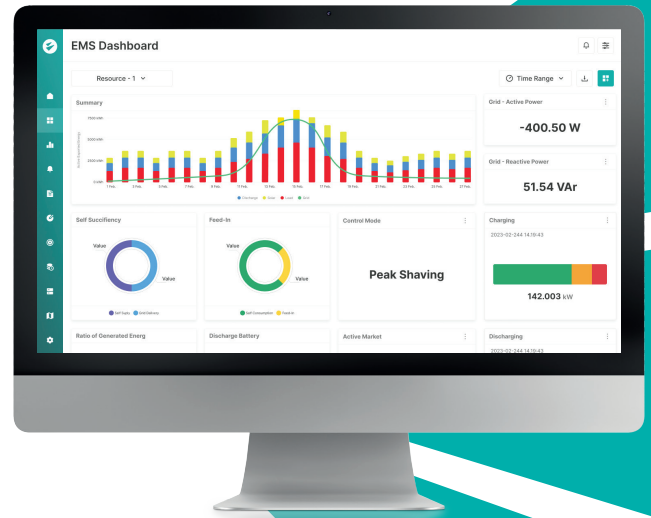


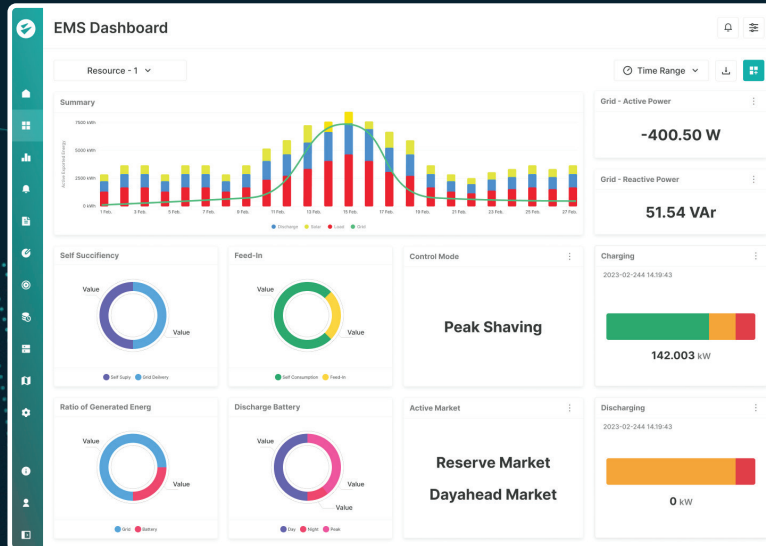


# EMS (Energy Management System)

Energy Management System (EMS) is a digital platform that monitors, controls and optimises energy production, storage and consumption of various assets. inavitas EMS seamlessly integrates storage, solar, wind assets and hybrid assets into the grid and energy markets. With real-time monitoring, production and price forecasting, advanced analytics and control capabilities, EMS offers the opportunity to maximise their operational efficiency, increase their reliability and create new revenue models in a rapidly evolving energy environment.



## EMS (Energy Management System)



### Customized Dashboards

Customizable monitoring screens can be created with widgets designed for data points or parameters.



### Analytics

Detailed data analysis is provided with selected units and parameters.



### VPP Configuration

The VPP Configuration module allows users to create, configure, and manage VPP, ensuring mapping, resource, and essential settings.



### VPP Schedule

VPP Schedule module allows users to efficiently create, manage, and visualize schedules for virtual power plants



### VPP Dashboard

VPP Dashboard provides comprehensive monitoring and control capabilities for virtual power plant

# Maximized Benefits for Your **Asset Portfolio**



Better decision making with data analysis and reports



Compliance with regulations and standards

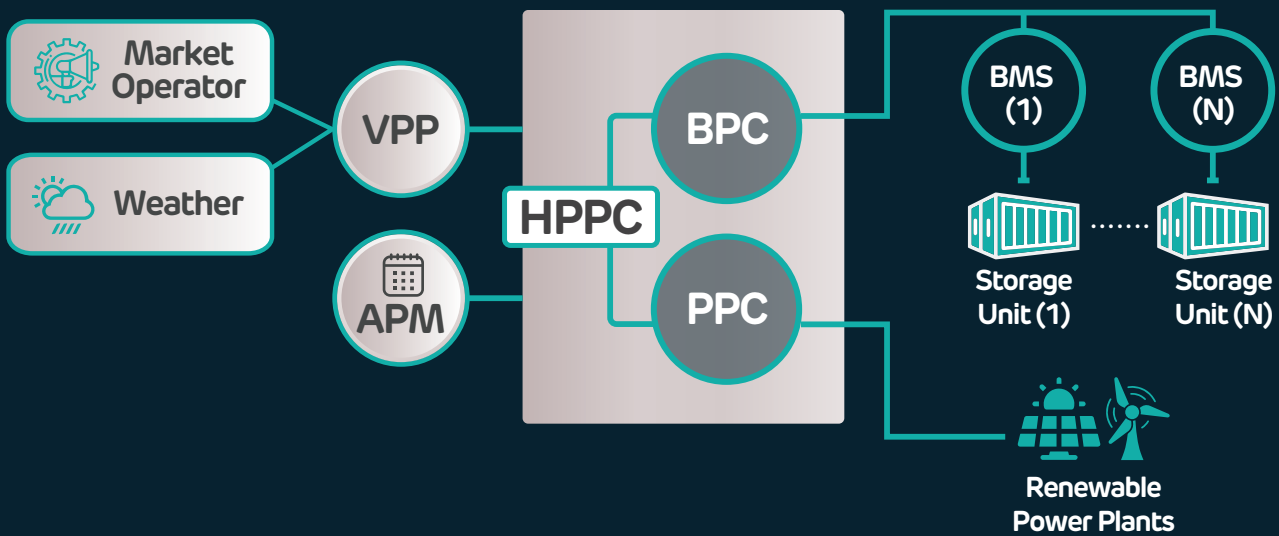


Enhanced grid stability



Better energy utilization

## Energy Management System **Architecture**



**APM**  
Asset Performance Management



**VPP**  
Virtual Power Plant



**HPPC**  
Hybrid Power Plant Control System



**PPC**  
Renewable Power Plant Control System



**BPC**  
Battery Power Plant Controller System



**BMS**  
Battery Storage Unit Control System



**inavitas**

info@inavitas.com | www.inavitas.com