

XFRAME®

XFrame Clip Range

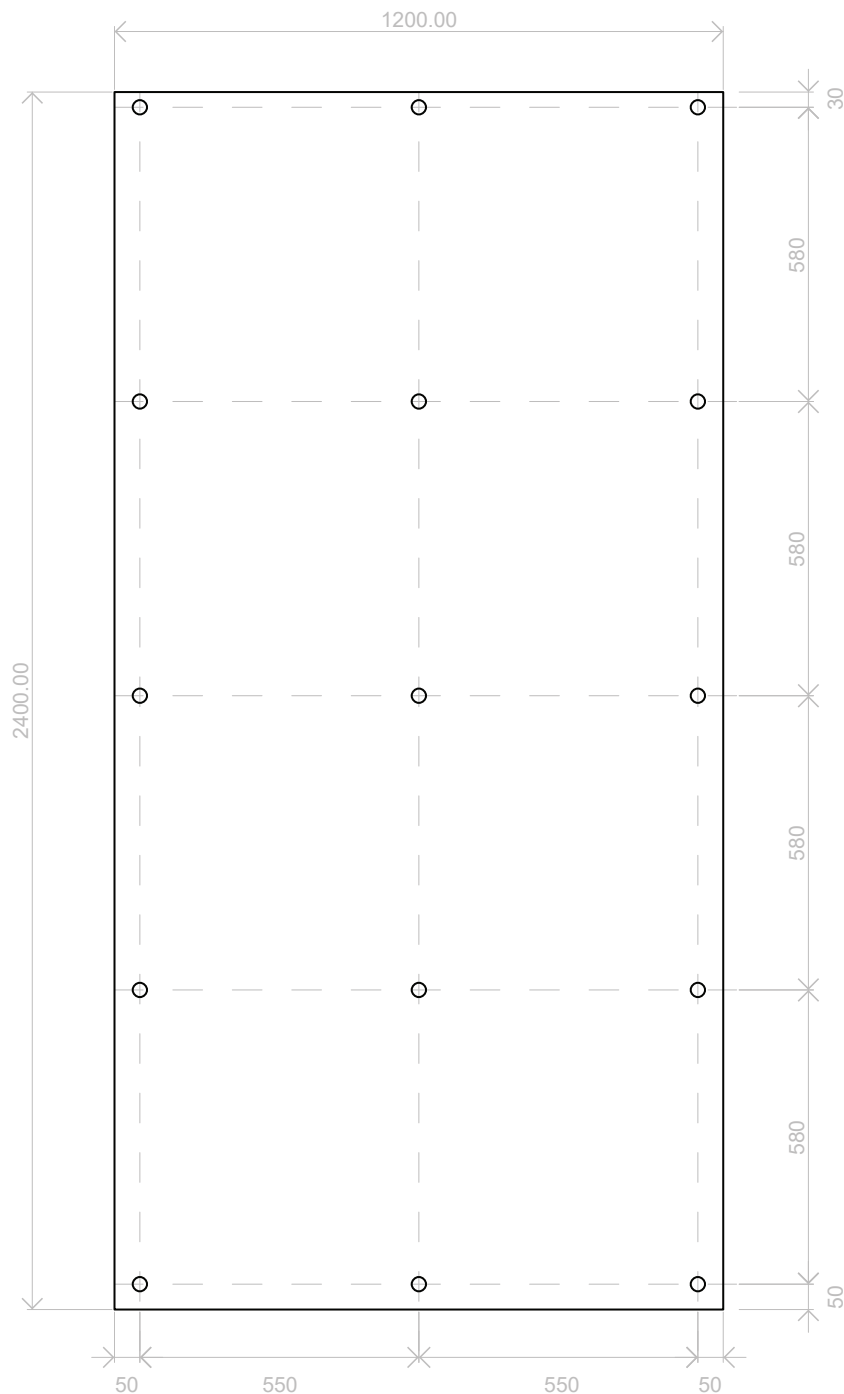
XF010 & XF015



Overview

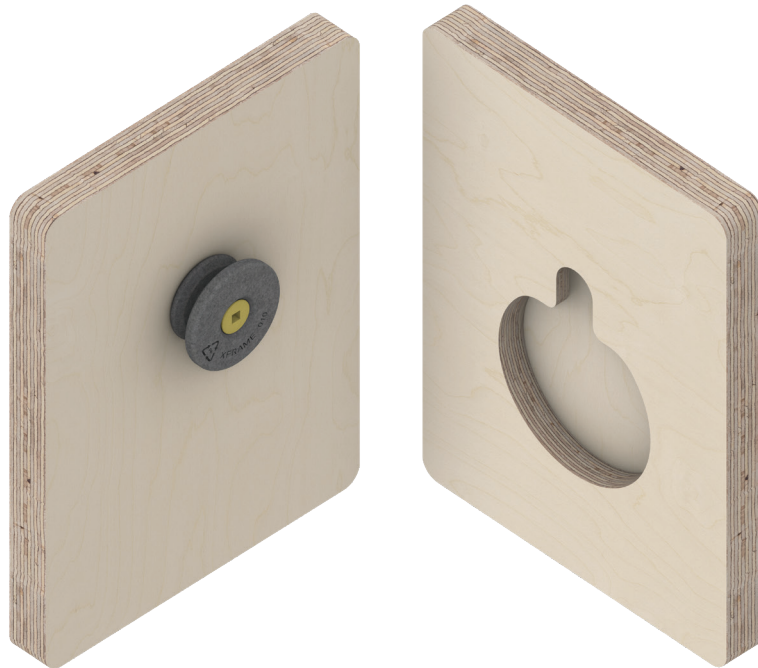
XFrame’s DLS clip system is designed to make the installation of demountable architectural wall finishes time and cost-efficient. Made from 100% recycled nylon, the clips utilise a hidden key-hole milled into the rear of linings to achieve a strong yet easily reversible panel connection. With options suited to different installation requirements, the system supports fast on-site installation, while the self-aligning keyhole design ensures precision panel seams.

Typical Clip Spacing



XF010

XFrame's 010 clip system is designed to make the installation of demountable architectural wall finishes time and cost-efficient. Made from 100% recycled nylon, the clip takes advantage of a hidden key-hole milled into the rear of linings to achieve a strong yet easily reversible panel connection.



XF010 - Flush

Design:

1-Part (Male) with CNC female - lift-off fixing.

Fixing Method:

Screws - one long into frame (typically 40mm 8g CS chip-board screw).

Offset:

Flush specification - no gap - lining hard against wall frame. Only works for 16mm or deeper linings.

CAD/CAM Requirements - Lining Side:

XF010 CAM Flush Geometry.

CAD/CAM Requirements - Frame Side:

A single 3mm diameter pilot hole for clip screw.

Spacing:

Max. 600mm centers between clips both horizontally and vertically.

Load Capacity:

30kg per clip.

Usage:

For 16mm (5/8 inch) linings. Suitable when the wall thickness needs to be minimised.

XF010 - Typical

Design:

1-Part (Male) with CNC female - lift-off fixing.

Fixing Method:

Screws - one long into frame (typically 40mm 8g CS chip-board screw). Offset: 4mm gap between wall frame and back of linings.

CAD/CAM Requirements - Lining Side:

XF010 CAM Typical Geometry.

CAD/CAM Requirements - Frame Side:

A single 3mm diameter pilot hole for clip screw.

Spacing:

Max. 600mm centers between clips both horizontally and vertically.

Load Capacity:

30kg per clip.

Usage:

For any lining 12mm or deeper - allows linings to be easily hung and removed.

XF010 - Rail

Design:

1-Part (Male) with CNC female - lift-off fixing.

Fixing Method:

Screws - one long into frame (typically 40mm 8g CS chip-board screw).

Offset:

4mm gap between wall frame and back of linings.

CAD/CAM Requirements - Lining Side:

XF010 CAM Rail Geometry.

CAD/CAM Requirements - Frame Side:

A single 3mm diameter pilot hole for clip screw.

Spacing:

Max. 600mm centers between clips both horizontally and vertically.

Load Capacity:

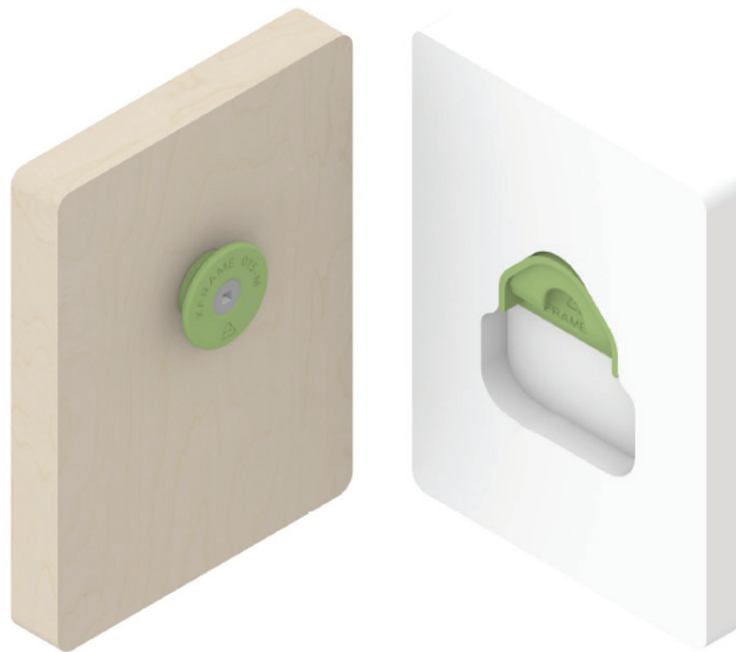
30kg per clip.

Usage:

For any lining 12mm or deeper - allows linings to be easily hung and removed. Allows linings horizontal location to be adjusted on site via a sliding connection.

XF015

XFrame's 015 clip system builds on the earlier XF010 technology, offering greater lifetime durability in a wider range of finishing materials than ever before, while continuing to make the installation of demountable architectural wall finishes time and cost-efficient. The new generation of flush-lift-off-clip system is a two-part design intended to allow the flush mounting of 12mm (1/2") sheet materials and allow the use of particle board linings (with softer cores).



XF015 - Typical

Design:

2-Part (Male/Female) with CNC cut female self-locking glue free pocket.

Fixing Method:

Male side 1x 35mm 8g CS chip-board screw.
Female side no hardware / intersection into pocket via install tool.

Offset:

None (sub 1mm – designed for flush).

CAD/CAM Requirements - Lining Side:

XF015 Geometry

CAD/CAM Requirements - Frame Side:

A single 3mm diameter pilot hole for clip screw.

Spacing:

Max. 600mm centers between clips both horizontally and vertically.

Load Capacity:

30kg per clip.

Usage:

For any lining 12mm or deeper – allows linings to be easily hung and removed. Specifically intended for chipboard or linings with soft cores.

Product Warranty

Introduction

XFrame is committed to providing high-quality products and ensuring customer satisfaction. This warranty outlines the terms and conditions under which XFrame products are warranted against defects in materials and workmanship.

Warranty Scope

Modular Walls, Pods, Booths, and Meeting Rooms

Period of Warranty

5 Years

Coverage of Warranty

XFrame warrants its products are free from defects in materials and workmanship for a period of 5 years from the date of delivery.

During the applicable warranty period, XFrame will repair or replace (at its discretion) any product, part, or component covered by this warranty which fails under normal use as a result of a defect in material or workmanship with a comparable product (at its discretion).

Warranty Claims Process

All warranty claims must be communicated to XFrame. This warranty covers the sale of XFrame products in all countries but only extends to the original purchasers. Any misuse, abuse, or modification to the original product voids the warranty. XFrame does not warrant the performance of the product when used in combination with anything other than original XFrame or approved third-party products. Any product, part, or component must have been installed and maintained by XFrame.

Exclusions

- × Any damage arising from water, heat, and/or direct sunlight
- × Improper transportation and installation after original installation
- × Claims for any other associated cost from the user
- × Natural variations in wood grain or the presence of character marks
- × Changes in surface finishes due to aging or exposure to lights
- × Failure resulting from normal wear and tear
- × Matching of colors, grains, or textures of natural products
- × The colorfastness or the matching of colors of textiles, including an exact match to cuttings, samples, or swatch cards
- × Damage, marking, or staining of veneer surfaces due to contact with rubber or similar compounds, damage from sharp objects, or prolonged exposure to direct sunlight
- × Damage caused from improper storage

Warranty does not apply to product failure resulting from:

- × Normal wear and tear
- × Abuse, misuse, accident, or repeated knocks
- × Alteration or modification of the product
- × Third-party fabrics, upholstery, foam, or other third-party materials applied to products
- × Damage caused by a carrier other than XFrame
- × Products not installed by or under the auspices of a certified dealer of XFrame
- × The substitution of any unauthorized non-XFrame components used in place of XFrame components in an integrated product solution
- × Claims for any other associated costs from the end user, including claims for reimbursement for any work carried out by an unauthorized third party

All replacement parts warranty is applicable from the date of delivery to the customers. Parts used to repair a product under warranty are covered to the end date of the original warranty period only.

XFrame reserves the right to perform an onsite inspection of the defected item, request the product be returned for further testing, or provide photographic evidence of product failure prior to any warranty claim being finalized.

All claims under this warranty must be communicated directly to XFrame. Unauthorized servicing immediately renders any warranty null and void. Parts used to repair a product under warranty are covered to the end date of the original warranty period only.

Governing Law: This warranty shall be governed by and construed in accordance with the laws of Australia.