

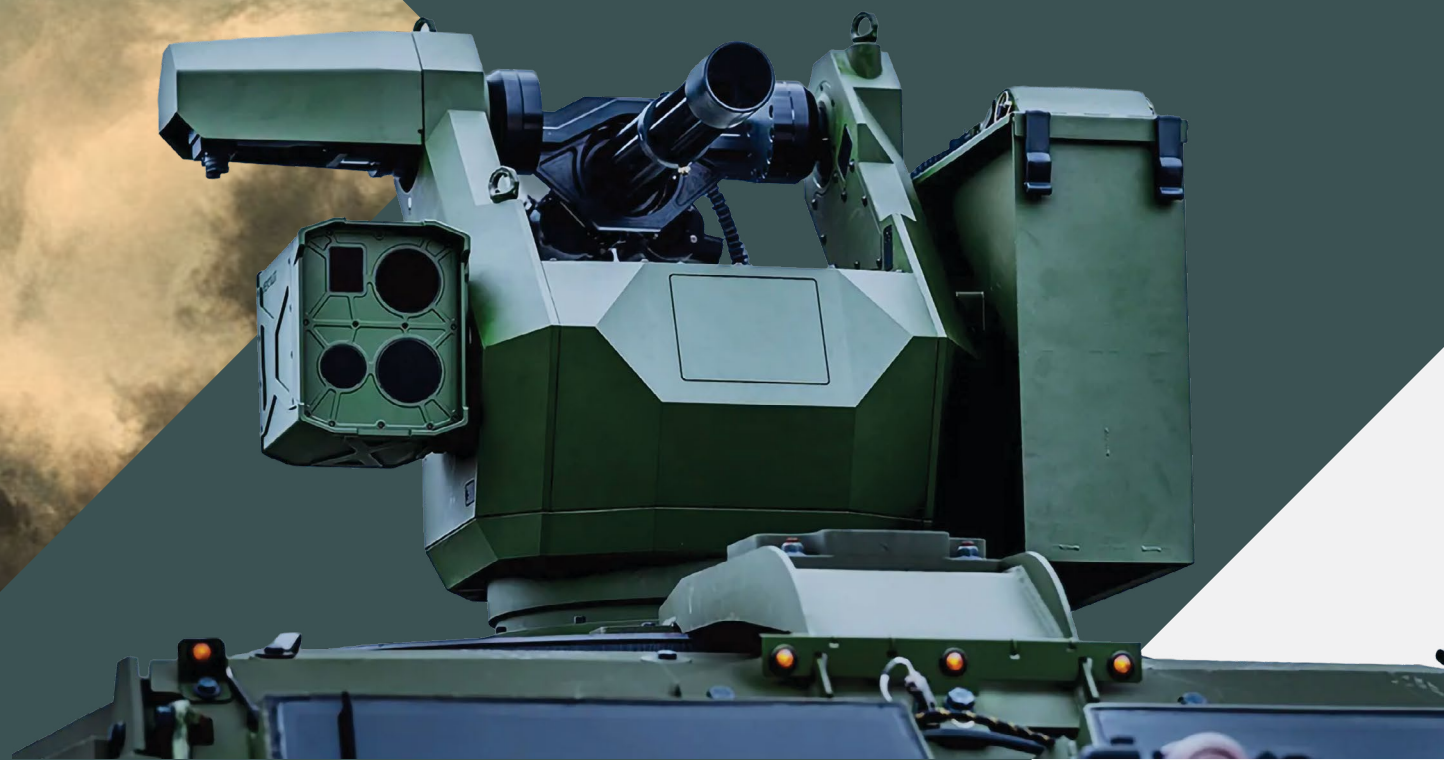


# MIDGARD

Midweight  
Remote-Controlled  
Weapon Station

**C-UAS ready**

# MIDGARD



## MODULAR, FAST AND C-UAS READY

**The MIDGARD Remote-Controlled Weapon Station is optimised for small and medium-sized vehicles, offering seamless integration of weapons ranging from 7.62 mm to 40 mm. Its adaptable architecture allows for deployment across a wide range of platforms, both mobile and static.**

Thanks to its high acceleration traverse and elevation systems, MIDGARD delivers rapid aiming and tracking – particularly effective against agile, low-flying aerial threats such as drones. Ideal for tactical and logistic vehicles, the system enables remote operation from a protected position. It can also serve as a fixed defensive solution or as a secondary armament on larger turret systems.

# MODULAR

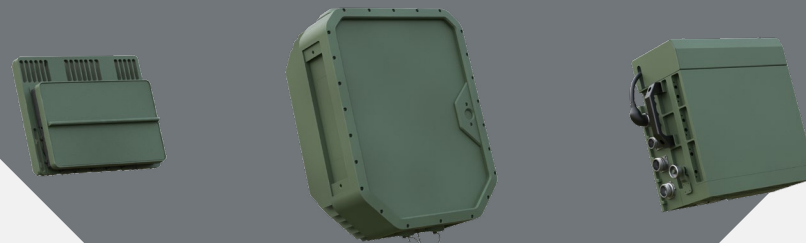
**WIDE CALIBER RANGE**



**EO SIGHT  
CONFIGURATION**



**RADAR OPTIONS**



# MISSION CONFIGURATIONS

The system supports a variety of mission-oriented configurations tailored to different operational requirements.

Flexible architecture and modular design enable adaptation across multiple weapon, sensor, radar and platform combinations.



Midgard M230LF



Midgard KPVT



Midgard M621



Midgard M134D



Midgard M2



Midgard GMG 40



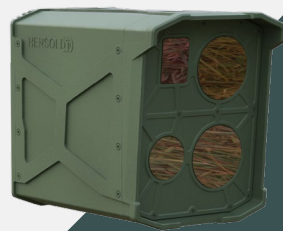
Midgard LGR4

# EO SIGHT CONFIGURATION

MIDGARD can be configured with advanced precision optics to ensure superior target identification and engagement capability. Combined day and thermal imaging sensors provide reliable operation and enhanced battlefield awareness in diverse environments.



DatCon 135



Hensoldt Taross



Safran Mineo



DatCon Lotus Lite



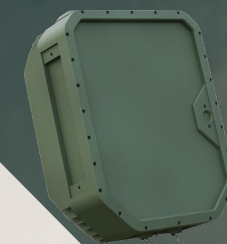
Hensoldt Taross  
AtmoLab Thorin



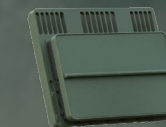
L3Harris  
Wescam MX-10

# RADAR OPTIONS

MIDGARD supports integration of various radar systems for enhanced detection, tracking, and situational awareness. Modular architecture allows adaptation to different operational requirements while maintaining reliable and efficient system performance.



EchoShield



EchoGuard



Hensoldt Spexer

# WIDE CALIBER RANGE

MIDGARD supports a wide range of calibers and armament options, offering intuitive and user-friendly operation.

The quick-detachable ammo box enables rapid reloading, minimizing personnel exposure.



LGR4



M621



KPVT



M230LF



M2



GMG 40



M134D



70x1800

7.62 x 51



12.7 x 99



14.5 x 114



20 x 102



30 x 113



40 x 53



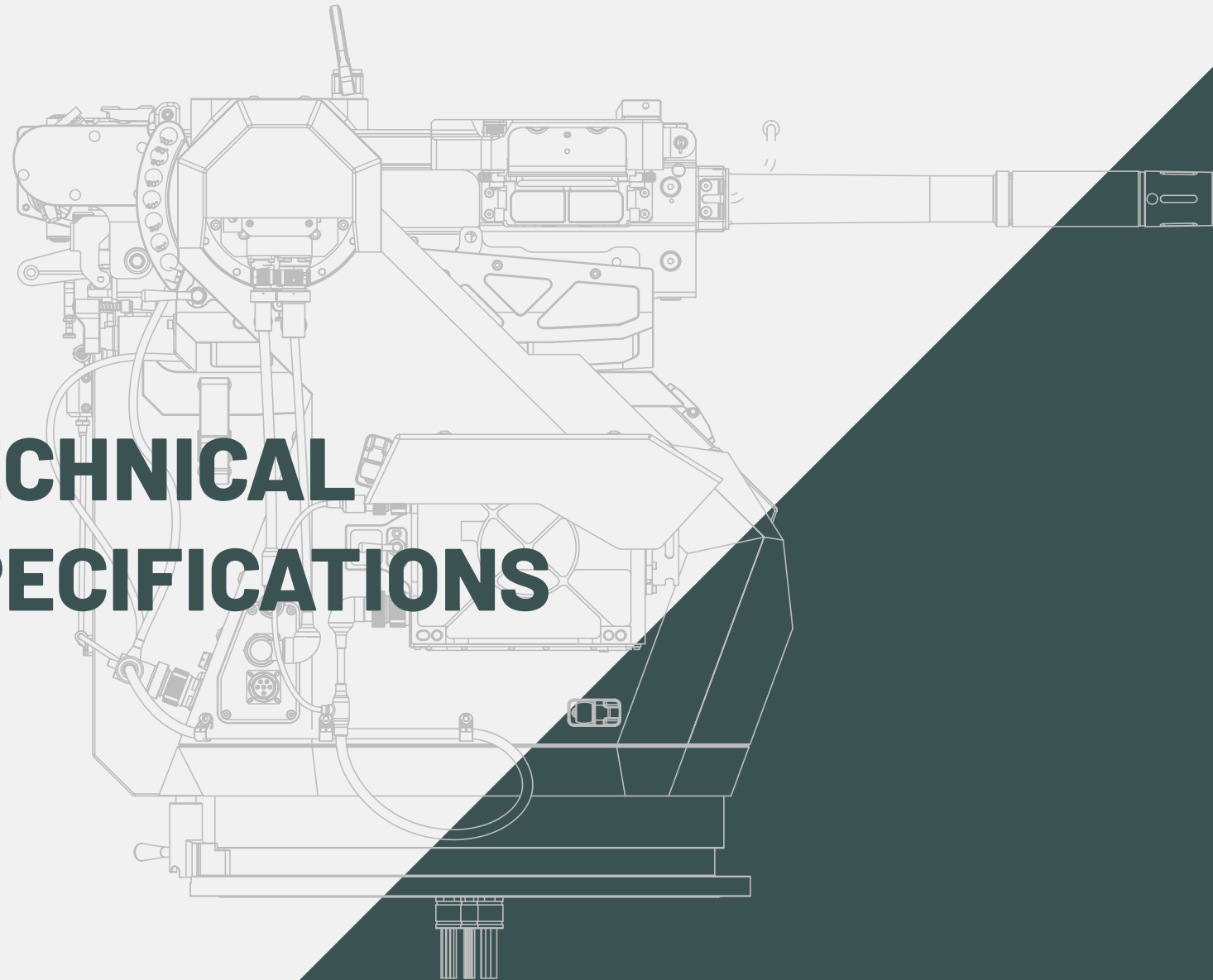
# MULTI-PLATFORM INTEGRATION

Designed for seamless integration across a wide range of vehicle platforms, the system supports flexible mechanical and electronic interfacing.

Its modular architecture enables efficient installation while maintaining platform mobility, stability, and operational effectiveness.



# TECHNICAL SPECIFICATIONS



## Armament Options

7.62×51	M134D
12.7×99	M2
14.5×114	KPTV
20×102	M621
30×113	M230LF
40×53	GMG 40
70×1800	LGR4

## Dimensions (without armament & optics/radars)

Height	795 mm
Width	933 mm
Length	625 mm
Weight Without Gun and Ammunition	210 kg

## Performance (depending on configuration)

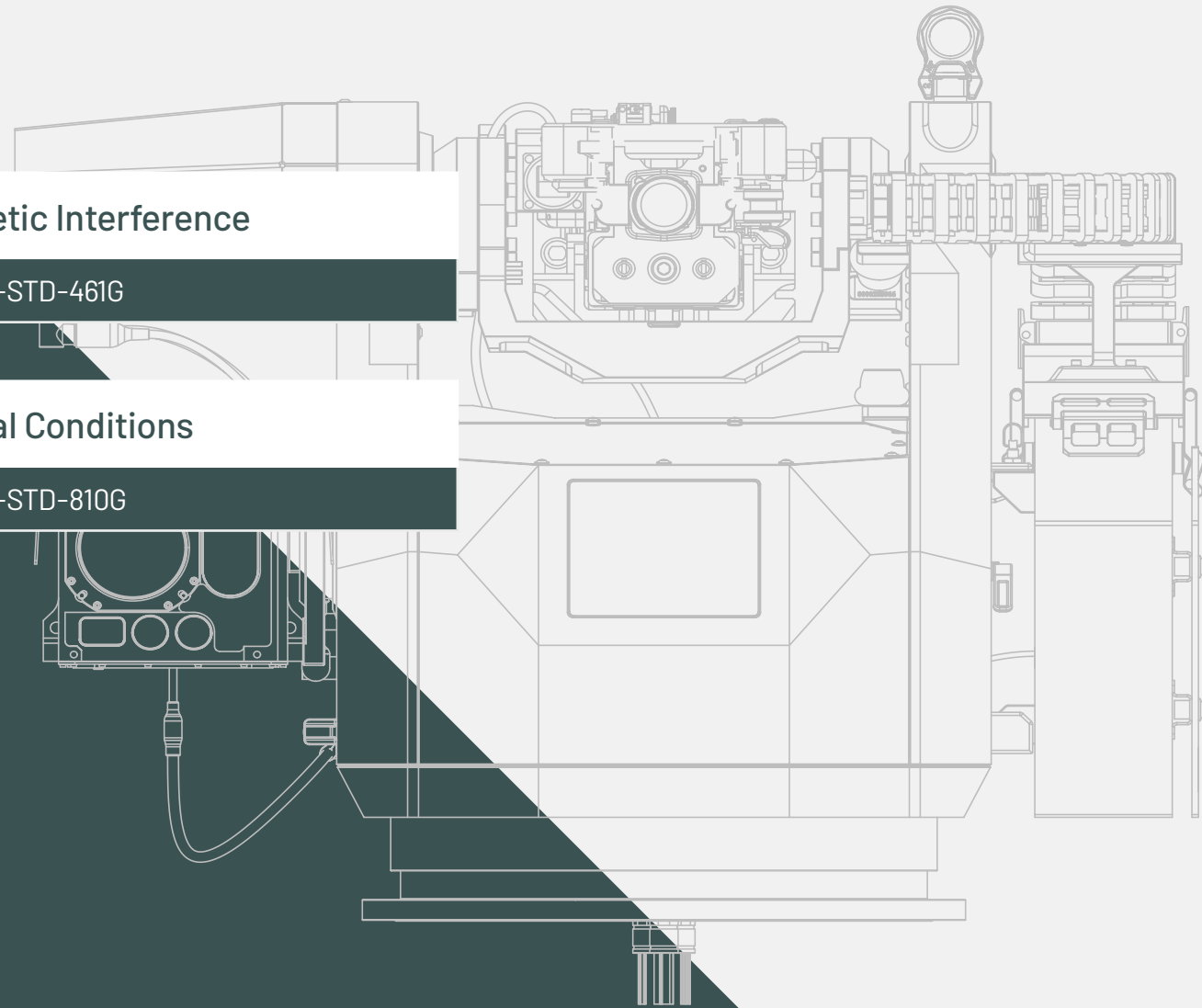
Elevation Range	+75° / -15°
Azimuth Range	n × 360°
Angular Speed	2 rad/s or 115°/s
Aiming Accuracy	<0,7mrad
Operating Temperature	-32°C / +55°C

Ammunition Capacity	
3,000 rounds	7.62×51
460 rounds	12.7×99
240 rounds	20×102
135 rounds	14.5 x114
180 rounds	30×113
96 rounds	40×53
4 rounds	70×1800

Advanced Features
Automatic Target Tracking
Day and Night Imaging
Fire Control Computer With Advanced Functionalities
Fired Rounds Counter
Gyro Stabilization
Laser Range Finder
Shoot-On-The-Move Capability (stationary or moving targets)

**Electromagnetic Interference**  
According to MIL-STD-461G

**Environmental Conditions**  
According to MIL-STD-810G



# GALLERY





Valhalla Turrets d.o.o.

Pod lipami 2, 1218 Komenda, Slovenia, EU

[info@valhalla-turrets.com](mailto:info@valhalla-turrets.com)

[www.valhalla-turrets.com](http://www.valhalla-turrets.com)

The configuration shown is provided for illustrative purposes only and may be adapted to customer-specific requirements due to the system's modular design. The scope of supply, appearance, performance data, dimensions and weights are based on information available at the time of printing. We reserve the right to make changes to colour, form and technical specifications without prior notice. Typographical errors and omissions excepted. Any vehicles depicted are the property of their respective owners and are shown solely for visualisation purposes. Their inclusion does not imply endorsement, cooperation or affiliation.

