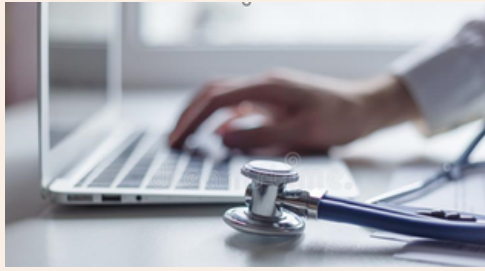


BIOMETRIC SOLUTION FOR THE HEALTHCARE SECTOR



As the Healthcare sector digitizes, a biometric identification and authentication system can enhance patient security and protection of sensitive data, eliminate unauthorized access, while adding employee efficiency benefits. All with the advantage of reducing common touch points.

CardLab Innovation offers a versatile fingerprint-activated multi-channel card with on-card matching. An approved fingerprint scan is required to verify staff and activate rights, access medicine storage, access patient medical records. If the scan matches the identity stored on the card, the cardholder will be able to enjoy their assigned rights. The card works seamlessly with PC's, doorlocks and other terminals via BLE, NFC or contact readers.

Biometrics cards protect both the healthcare system and the staff and solve key issues including:

- Blocking intruders and fake staff unauthorized access.
- Convenient and secure logon process to computers, medical records and other data.
- Patient data can be stored in a secure applet in the card and protected by patient fingerprint.
- Full control of access to critical areas, medicine, drugs and equipment.

Biometric card holders' convenience and protection increases as passwords and PIN's are automatically generated and transmitted each time the fingerprint is approved. For hospitals the system can save significant IT support costs due to lost, stolen or copied passwords

Defender card – built for purpose



- Fingerprint sensor for user verification
- Secure Element for user data, medical records etc
- Communication via BLE, NFC or contact chip
- Display for information data or verification
- GDPR compliance through identity tokenization
- User artwork according to card industry standards
- Multiple personalization options



Solution benefits: The Defender card has multiple interfaces and can serve as authentication devices for any host platform like tablets, PC's, door locks and other terminals, and will function without any special upgrades to the backend as all is based on authentication API's.

Only by presenting the right finger, can the card and stored data be activated and prove your unique identity. Verification is done on the card and your biometric data never leaves the card or can be read from the outside giving optimum privacy protection.



Are you ready to secure your organization?

Learn how CardLab's Access, Defender,
and Quardlock Backend solutions
can protect your enterprise while
simplifying user experience.



CARDLAB APS

HOERKAER 20, 2
DK-2730 HERLEV
DENMARK

EMAIL: INFO@CARDLAB.COM

PHONE: +45 31 55 49 94

CARDLAB (THAILAND) CO. LTD.

200/9 MOO 2 KLONG TAMRU
MUANG CHONBURI 20000
THAILAND

EMAIL: INFO.ASIA@CARDLAB.COM

PHONE: +66 38 195 193

