

STUDENT HANDBOOK



PERNOO SCHOOL
OF MUSICAL PERFORMANCE

2026 – 2027

PARIS · FRANCE



PERNOO SCHOOL
OF MUSICAL PERFORMANCE

Pernoo School of Musical Performance

An international training institution for advanced instrumentalists and young professional musicians, based in the Paris area.

ACADEMIC YEAR

2026 - 2027

ONLINE

www.pernooschool.com
admin@pernooschool.com

COURSE ADDRESS

42 rue des Sept Arpents
93500 Pantin · France

REGISTERED OFFICE

85 B rue Henri Barbusse
93260 Les Lilas · France

Contents

| | | |
|----|--|----|
| 01 | Welcome from Jérôme Pernoo | 1 |
| 02 | About the School | 3 |
| 03 | Programs | 7 |
| 04 | Faculty | 13 |
| 05 | Academic Structure | 16 |
| 06 | Expectations and Responsibilities | 23 |
| 07 | Attendance Policy | 27 |
| 08 | Tuition and Fees | 30 |
| 09 | Student Services | 34 |
| 10 | International Students and Practical Information | 39 |
| 11 | Safety | 44 |
| 12 | Frequently Asked Questions (FAQ) | 46 |
| 13 | Notable Students and Alumni | 50 |



CHAPTER

01

Welcome from Jérôme Pernoo

A word from the Founder and Artistic Director.

Dear Student,

Welcome to the Pernoo School of Musical Performance.

By joining the School, you become part of a community of young musicians who share a common ambition: to develop the highest level of artistic excellence while building a meaningful and sustainable musical career.

The purpose of the School is not simply to help students play their instrument better. Technical mastery is essential, but it is only one aspect of what it means to become a complete artist. Our goal is to help each student develop a personal artistic voice, a deeper understanding of music, and the ability to communicate with conviction on stage.

Music is a living art. It is learned through study, reflection, experimentation, performance, and dialogue. For this reason, the School places great importance on individual responsibility. Progress does not happen only during lessons. It happens every day, in the practice room, during rehearsals, in concerts, and through the constant pursuit of artistic growth.

At the Pernoo School, students are encouraged to become independent musicians. We seek to develop not only performers, but also thoughtful artists capable of making informed musical decisions, building their own projects, and adapting to the realities of a professional career.

The relationship between teacher and student is at the heart of our educational philosophy. Teaching is not simply the transmission of knowledge. It is a collaborative process based on trust, commitment, curiosity, and mutual respect. Every student follows a unique path, and our role is to help each individual discover and develop their full potential.

The School also provides a stimulating artistic environment where students can learn from one another. Through lessons, studio classes, masterclasses, performances, and informal exchanges, students are exposed to a wide range of musical ideas and perspectives. These encounters often become an important part of their artistic development.

The professional world of music demands much more than instrumental ability. It requires discipline, resilience, creativity, communication skills, and the capacity to continue learning throughout one's career. We aim to prepare students for these challenges while preserving the joy, curiosity, and sense of purpose that first brought them to music.

Paris has long been one of the great cultural capitals of the world. It offers an exceptional environment for artistic growth, with its rich musical life, renowned institutions, and vibrant international community. We encourage every student to take full advantage of the artistic and cultural opportunities the city has to offer.

I am delighted to welcome you to the Pernoo School of Musical Performance and look forward to accompanying you on this important stage of your artistic journey.

With my best wishes for a rewarding and inspiring year,

Jérôme Pernoo

FOUNDER AND ARTISTIC DIRECTOR

A young man with dark hair, wearing a blue patterned shirt, is playing a cello. He is looking upwards and to the right with a focused expression. The background is a blurred audience in a concert hall.

CHAPTER

02

About the School

Our mission, our philosophy, and the values that guide our work.

Our mission

The Pernoo School of Musical Performance is an international training institution for advanced instrumentalists and young professional musicians who aspire to build a career at the highest artistic level.

Our mission is to help talented musicians bridge the gap between academic studies and professional artistic life.

While many institutions focus primarily on technical development, the Pernoo School places equal emphasis on artistic identity, musical understanding, stage presence, independent thinking, and professional preparation.

We aim to equip students with the skills, habits, and artistic maturity required to thrive in today's musical world.

Our educational philosophy

We believe that artistic excellence cannot be reduced to technical mastery alone.

A successful musician must develop:

- A refined instrumental technique
- A strong inner musical imagination
- A deep understanding of the repertoire
- The ability to communicate with an audience
- The discipline to work independently
- The confidence to make personal artistic choices

For this reason, our teaching combines individual guidance with the development of artistic autonomy.

Students are encouraged to think critically, take responsibility for their progress, and become active participants in their own artistic development.

A personalised approach

Every musician follows a unique artistic path.

Some students are preparing for major international competitions. Others are pursuing orchestral careers, chamber music projects, recording opportunities, teaching positions, or freelance artistic careers.

The School therefore avoids a one-size-fits-all approach.

Each student's programme is designed around their individual goals, strengths, challenges, and professional aspirations.

This personalised guidance is one of the defining characteristics of the Pernoo School.

An international environment

The School welcomes students from around the world.

Our community brings together musicians from diverse cultural backgrounds who share a commitment to artistic excellence and continuous growth.

This international environment encourages openness, curiosity, collaboration, and the exchange of ideas.

Students benefit not only from their lessons, but also from the opportunity to learn from their peers and build lasting professional relationships.

Learning through performance

Performance is an essential part of musical development.

Throughout their studies, students are encouraged to perform regularly in a variety of settings, including:

- Studio classes
- Public masterclasses
- Auditions
- Chamber music projects
- Concert performances
- Recording sessions

These experiences allow students to apply their work in real artistic situations and develop the confidence required for a professional career.

Paris as a place of artistic growth

The School is based in the Paris area, one of the world's most important cultural centres.

Students benefit from access to:

- Internationally renowned concert halls
- Major orchestras and opera companies
- Festivals and artistic events
- Museums, theatres, and cultural institutions
- A vibrant community of musicians and artists

Living and studying in this environment offers countless opportunities for inspiration and artistic enrichment.

Our values

Artistic excellence

We encourage students to pursue the highest standards in every aspect of their musical work.

Personal responsibility

Meaningful progress requires commitment, discipline, and ownership of one's artistic development.

Integrity

Honesty, respect, and professionalism are essential qualities for every musician.

Curiosity

Artistic growth begins with an open mind and a desire to explore new ideas.

Collaboration

Music is a shared art form. We value mutual support, generosity, and respect within our community.

Our vision

The Pernoo School of Musical Performance seeks to develop musicians who are not only skilled performers, but thoughtful artists capable of contributing meaningfully to the musical life of their generation.

Our ambition is to provide an environment where talent can flourish, individuality can be nurtured, and artistic potential can be transformed into professional achievement.



CHAPTER

03

Programs

Personalised training for advanced instrumentalists and young professional musicians.

The Pernoo School of Musical Performance offers highly personalised training programmes designed for advanced instrumentalists and young professional musicians at different stages of their artistic development.

Admission is by application and interview only. Each applicant's background, goals, and level of preparation are carefully evaluated in order to determine the most appropriate programme.

Advanced Studies Program

Overview

The Advanced Studies Program is intended for highly talented musicians preparing for admission to leading conservatories, universities, and specialised music institutions.

The programme provides intensive preparation aimed at helping students reach the artistic and technical standards required for competitive entrance examinations and auditions.

Intended for

- Advanced pre-college students
- Undergraduate musicians seeking admission to Master or graduate-level programmes
- Students preparing for conservatory entrance examinations
- Young musicians wishing to strengthen their artistic foundation

Areas of study

Students may work on:

- Technical development
- Repertoire preparation
- Audition programmes
- Musical interpretation
- Practice strategies
- Performance confidence
- Artistic development

Learning environment

Instruction is tailored to each student's goals, strengths, and areas for improvement.

Students benefit from regular feedback and structured preparation leading toward specific artistic objectives.

Concert Artist Program

Overview

The Concert Artist Program is designed for advanced musicians who have completed higher musical studies and are preparing to enter the professional world.

The programme focuses on the transition from student life to a professional performing career. Particular attention is given to artistic individuality, performance preparation, stage experience, and professional development.

Intended for

- Graduates of conservatories and universities
- Musicians preparing for international competitions
- Young artists pursuing solo, chamber music, or orchestral careers
- Performers seeking intensive artistic guidance

Areas of study

Students may receive support in areas such as:

- Instrumental technique
- Interpretation and musical style
- Performance preparation
- Audition preparation
- Competition preparation
- Chamber music
- Stage presence and communication
- Practice methodology
- Career development

Learning environment

The programme combines individual instruction, studio classes, public masterclasses, and performance opportunities.

Each student's artistic objectives help shape the content and direction of the programme.

Artist Diploma Program

Overview

The Artist Diploma Program is designed for musicians who have completed a Master's degree in performance, or who can demonstrate an equivalent level of professional training and artistic achievement.

This programme offers a flexible and highly individualised form of mentorship adapted to the needs of each participant.

Rather than following a fixed curriculum, musicians work closely with Jérôme Pernoo on artistic, professional, and strategic questions related to their career.

Intended for

- Professional performers
- Orchestra musicians
- Chamber musicians
- Soloists
- Recording artists
- Teachers seeking artistic renewal

Areas of mentorship

Topics may include:

- Repertoire development
- Artistic identity
- Career strategy
- Competition preparation
- Recording projects
- Concert preparation
- Practice optimisation
- Long-term artistic planning

Learning environment

The programme is fully personalised.

Meetings may take place in person or online, depending on the participant's professional commitments and geographical location.

Individualised Study

Every student admitted to the Pernoo School follows a unique artistic path.

For this reason, programme content may be adapted to reflect individual needs, professional goals, and artistic priorities.

The School values flexibility, personal responsibility, and close artistic mentorship, allowing each musician to develop at their own pace while working toward the highest standards of musical performance.

Professional Visibility and Promotion

(For Concert Artist and Artist Diploma programs only)

The Pernoo School actively supports the professional visibility of its students and alumni.

Student Portfolio Pages

Students enrolled in the Concert Artist Program and Artist Diploma Program may be featured on the School's website through a dedicated portfolio page.

These pages may include:

- Biography
- Professional photographs
- Video recordings
- Repertoire highlights
- Competition results
- Performance experience
- Personal artistic profile
- Links to professional websites and social media

The objective is to provide students with a professional online presence that can be shared with presenters, festivals, competition organisers, orchestras, and potential collaborators.

Achievement Articles

When students achieve significant artistic milestones, the School may publish dedicated news articles highlighting their accomplishments.

Examples may include:

- Competition prizes
- Finalist and semi-finalist appearances
- Major concert engagements
- Orchestral appointments
- Recordings and artistic projects
- Admission to prestigious institutions
- Notable professional achievements


These articles may be featured on the School's website and communication channels, helping to increase the visibility of the student's work and celebrate their artistic development.

Building a Professional Profile

The School believes that artistic excellence and professional visibility should develop together.

Students are encouraged to build a professional identity that reflects both their artistic achievements and their individual personality.

Through portfolio pages, achievement articles, recordings, and performance opportunities, the School seeks to help students establish a strong foundation for their future careers.

A photograph of a man with grey hair, wearing a dark suit jacket over a white shirt, gesturing with his right hand as if speaking or presenting. In the background, a woman is visible, looking towards the man. The scene is dimly lit, suggesting an indoor setting like a classroom or lecture hall.

CHAPTER

04

Faculty

An education built on close artistic mentorship.

Learning from experience

The Pernoo School of Musical Performance is built around the principle of close artistic mentorship.

Students benefit from the guidance and mentorship of French cellist Jérôme Pernoo.

The School places particular importance on the transmission of practical knowledge acquired through years of performing, teaching, recording, and collaborating with musicians at the highest level.

Jérôme Pernoo

Founder and Artistic Director

Jérôme Pernoo is one of France's leading cellists and a highly respected teacher whose students have gone on to successful international careers as soloists, chamber musicians, orchestral players, and competition laureates.

Following studies at the Conservatoire National Supérieur de Musique de Paris, he developed an international performing career that has taken him to major concert halls and festivals throughout Europe, Asia, and North America.

Alongside his performing activities, he has devoted a significant part of his career to teaching and mentoring young musicians.

Over the years, many of his students have been admitted to prestigious institutions, won international competitions, joined leading orchestras, and established successful professional careers.

His teaching philosophy combines technical precision, artistic imagination, intellectual curiosity, and a strong emphasis on personal responsibility. Students are encouraged not only to master their instrument, but also to develop a distinctive artistic voice and a deep understanding of the music they perform.

As Artistic Director of the Pernoo School of Musical Performance, he works closely with each student to support their artistic growth and professional development.

Guest Artists and Visiting Professors

Throughout the year, the School may welcome distinguished performers, teachers, conductors, chamber musicians, and other music professionals as guest artists or visiting professors.

These encounters provide students with valuable exposure to a variety of artistic perspectives, teaching approaches, and professional experiences.

Guest artists may contribute through:

- Masterclasses
- Jurys
- Public lessons
- Workshops
- Chamber music coaching
- Career discussions
- Special artistic projects

The participation of guest artists varies from year to year according to the School's activities and partnerships.

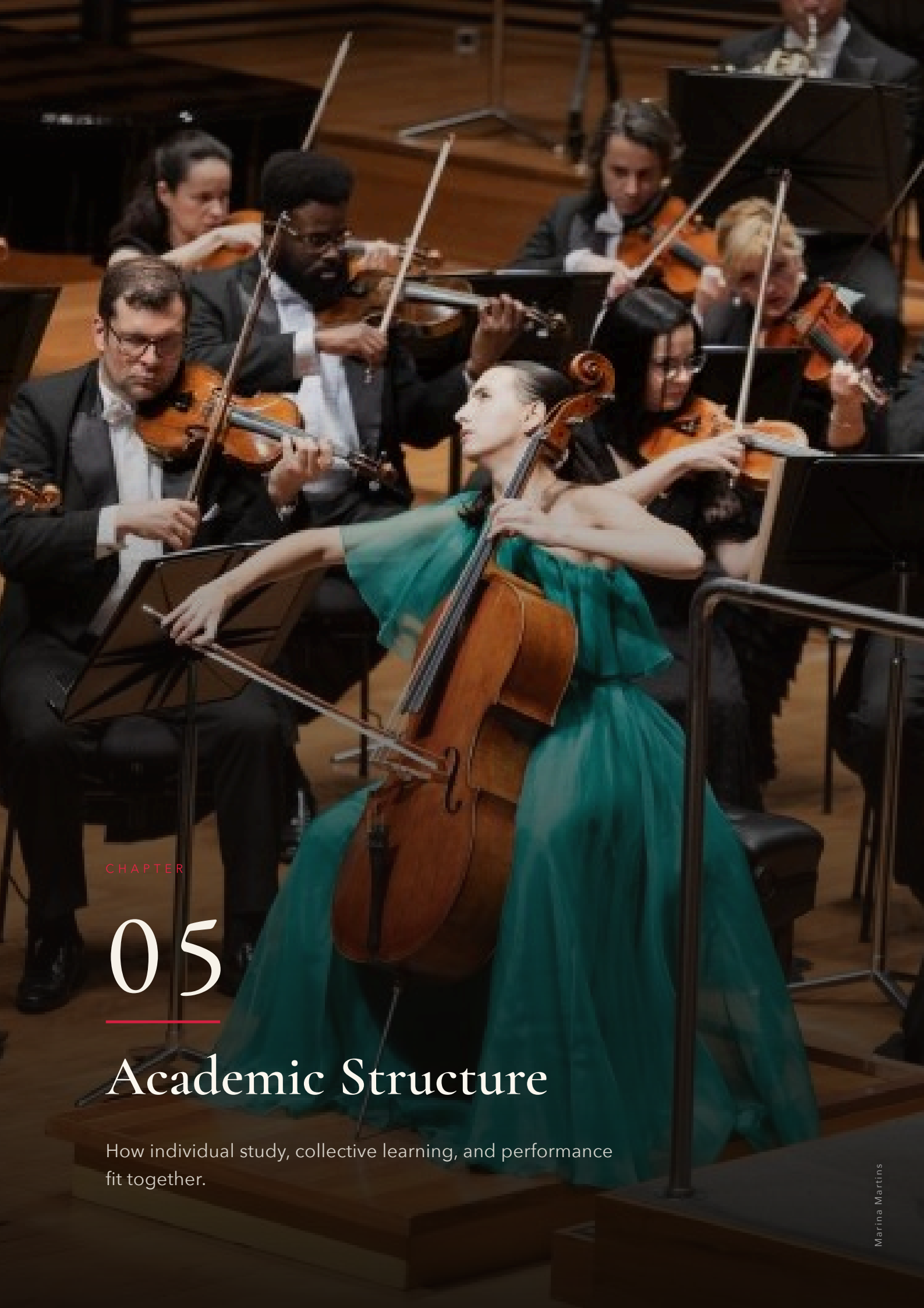
A Mentorship-Based Approach

At the Pernoo School, education is based on mentorship rather than standardised instruction.

Students work in close contact with their teacher, receiving personalised guidance tailored to their individual goals, strengths, and artistic challenges.

This approach encourages meaningful artistic development while helping students cultivate independence, confidence, and long-term professional resilience.

The School seeks to foster an environment in which students are challenged, supported, and inspired to pursue the highest standards of musical performance.



CHAPTER

05

Academic Structure

How individual study, collective learning, and performance fit together.

The Pernoo School of Musical Performance offers a flexible and highly personalised educational environment designed to meet the needs of advanced musicians and young professionals.

Rather than following a rigid curriculum, students pursue an individual course of study tailored to their artistic goals, level of development, and professional aspirations.

The School combines individual instruction, collective learning experiences, and regular performance opportunities to support each student's artistic growth.

Individual Lessons

Individual lessons form the core of the educational experience at the Pernoo School.

These lessons provide an opportunity for in-depth work on technical development, interpretation, repertoire, artistic identity, and performance preparation.

Students receive personalised guidance adapted to their specific needs and objectives.

Topics may include:

- Technical development
- Sound production
- Musical interpretation
- Style and historical awareness
- Practice strategies
- Audition preparation
- Competition preparation
- Concert preparation
- Artistic decision-making

The frequency and scheduling of lessons may vary according to the student's programme and individual circumstances.

Collaborative Coaching Sessions

Students in the Advanced Studies Program participate in weekly coaching sessions with a professional pianist.

They have regular coaching sessions with the accompanist to support the preparation of their repertoire and deepen their understanding of the musical score.

These sessions are designed to help students move beyond the technical demands of their own instrumental part and develop a broader awareness of the musical structure as a whole.

Particular emphasis is placed on:

- Ensemble playing
- Harmonic awareness
- Listening skills
- Musical dialogue
- Stylistic understanding
- Interpretation of the full score
- Preparation of recital and competition repertoire

Students are encouraged to develop the ability to hear and understand the harmonic language underlying the music they perform, strengthening both their musical imagination and their interpretative choices.

These coaching sessions also provide valuable preparation for chamber music, collaborative performance, auditions, competitions, and professional concert activity.

Studio Classes

Studio Classes provide students with regular opportunities to perform for their peers and receive feedback in a supportive and professional environment.

These sessions encourage students to:

- Develop confidence in performance situations
- Refine their communication with an audience
- Strengthen their critical listening skills
- Learn from the work of fellow musicians
- Explore a variety of artistic perspectives

Studio Classes play an important role in preparing students for public performance and professional artistic life.

Group Lessons

(Advanced Studies Program only)

The Advanced Studies Program is designed not only to develop technical and musical skills, but also to foster the intellectual curiosity and artistic maturity expected of today's professional musicians.

As part of the Advanced Studies Program, students participate in a series of group lessons designed to support their artistic, intellectual, and personal development.

These sessions complement individual instrumental instruction by exploring subjects that contribute to the formation of a complete musician and performing artist.

Topics may include:

- Performance anxiety and stage confidence
- Stage presence and communication
- Video recording and digital presentation
- Rhythm and musical pulse
- Imagination and artistic creativity
- Poetry and its relationship to musical expression
- Painting and visual arts
- Theatre and dramatic interpretation
- Literature and storytelling in performance
- Listening skills and artistic perception

These sessions encourage students to develop a broader artistic culture, strengthen their expressive abilities, and deepen their understanding of the creative process.

By engaging with a wide range of artistic disciplines, students learn to enrich their musical interpretation and cultivate a more personal and imaginative artistic voice.

Public Masterclasses

Throughout the year, students may have opportunities to participate in public masterclasses led by Jérôme Pernoo and invited guest artists.

Public masterclasses expose students to different teaching approaches while developing their ability to respond effectively under performance conditions.

They also provide valuable experience in presenting work before an audience.

Performance Opportunities

Performance is an essential component of artistic development.

Whenever possible, students are encouraged to participate in a variety of performance settings, including:

- Studio performances
- Public concerts
- Chamber music projects
- Educational presentations
- Recording sessions
- Special artistic events

These experiences help students translate their work into meaningful artistic communication and prepare for the realities of professional performance.

Independent Practice

The School places great importance on independent work.

Students are expected to maintain a disciplined and consistent practice routine throughout their studies.

Teachers provide guidance and strategies for effective practice, but meaningful artistic development ultimately depends on the student's daily commitment and personal responsibility.

Developing the ability to work independently is considered an essential part of professional preparation.

Artistic Projects

Students may be encouraged to develop individual artistic projects that reflect their interests and professional ambitions.

Such projects may include:

- Recital programmes
- Chamber music initiatives
- Recording projects
- Educational activities
- Competition preparation
- Research related to repertoire and performance practice

These projects help students develop initiative, creativity, and professional independence.

Artistic Assessment and Individual Progress Reviews

The Pernoo School of Musical Performance places great importance on regular assessment, reflection, and long-term artistic development.

Assessment is not viewed primarily as a grading process, but as an opportunity to identify strengths, clarify priorities, and establish clear objectives for future growth.

Technical Examination

Each year, students participate in a Technical Examination held in February.

The examination focuses on the technical foundations and includes scales, études, technical exercises, and other materials selected by the School.

The objective is to evaluate the student's technical development and identify areas requiring further attention.

Repertoire Examination

A Repertoire Examination takes place in June.

Students perform selected works from their current repertoire in front of a jury composed of visiting artists and invited faculty members.

The examination evaluates musical understanding, artistic maturity, technical command, stylistic awareness, and overall performance quality.

The student must also recite a poem during their musical performance.

Individual Evaluation Session

Following each examination, students participate in an individual one-to-one evaluation meeting.

During this session, members of the faculty provide detailed feedback on the student's performance, highlighting both achievements and specific areas for improvement.

These discussions are intended to provide practical guidance and clear artistic direction for the next stage of development.

Annual Strategic Review

At the conclusion of each academic year, students meet individually with the School to review their progress, achievements, and future objectives.

This discussion may address topics such as:

- Artistic development
- Repertoire planning
- Competitions and auditions
- Professional opportunities
- Long-term career goals
- Areas for further growth

Beginning-of-Year Planning Meeting

At the start of each academic year, students participate in a strategic planning meeting designed to establish objectives and priorities for the year ahead.

Together with the School, students define a personalised artistic plan that reflects their individual ambitions, strengths, and professional aspirations.

This process helps ensure that each student's programme remains focused, purposeful, and aligned with their long-term artistic goals.

A Personalised Journey

Every student's path at the Pernoo School is unique.

The School seeks to provide an environment in which talented musicians can develop their artistic voice, strengthen their professional skills, and prepare for the opportunities and challenges of a musical career.

A young man with dark hair, wearing a white button-down shirt, is captured in a close-up shot playing a cello. He has his eyes closed and a focused expression, with his mouth slightly open. The cello is a rich, warm brown color. The background is dark and out of focus, showing other people in a concert hall. The lighting is dramatic, highlighting the man's face and the instrument.

CHAPTER

06

Expectations and Responsibilities

The shared commitment behind a culture of excellence.

The Pernoo School of Musical Performance is committed to maintaining an environment that encourages artistic excellence, personal growth, mutual respect, and professional integrity.

Students are expected to take an active role in their own development and to contribute positively to the life of the School.

Success in music depends not only on talent, but also on commitment, discipline, curiosity, and the willingness to learn continuously.

Commitment to Artistic Excellence

Students are expected to approach their studies with seriousness, dedication, and a genuine desire to improve.

This includes:

- Preparing thoroughly for lessons and classes
- Practising regularly and efficiently
- Setting ambitious artistic goals
- Remaining open to feedback and new ideas
- Striving for the highest standards of musical performance

The School encourages students to take ownership of their artistic development and to cultivate habits that support long-term success.

Professional Conduct

Students are expected to behave in a professional manner at all times.

Professional conduct includes:

- Punctuality
- Reliability
- Respectful communication
- Personal responsibility
- Appropriate behaviour during lessons, rehearsals, classes, and performances

The habits developed during training often become the foundation of a future professional career.

Attendance and Participation

Students are expected to attend all scheduled lessons, classes, rehearsals, performances, and other activities that form part of their programme.

Active participation is considered an essential component of artistic development.

If circumstances prevent attendance, students should notify the School as early as possible.

Repeated absences, lateness, or lack of preparation may affect a student's progress and participation in School activities.

Responsibility for Personal Progress

Teachers provide guidance, expertise, and mentorship, but artistic growth ultimately depends on the student's own effort and commitment.

Students are expected to:

- Organise their practice time effectively
- Maintain consistent work habits
- Take initiative in addressing challenges
- Seek solutions independently when appropriate
- Demonstrate increasing artistic autonomy throughout their studies

The School aims to develop musicians who are capable of continuing their artistic growth long after formal studies have ended.

Care for Facilities and Equipment

Students are expected to treat all facilities, instruments, equipment, sheet music, and other resources with care and respect.

Any damage to School property should be reported promptly.

Students may be held responsible for damage resulting from negligence or misuse.

Academic and Artistic Integrity

Students are expected to conduct themselves honestly and ethically in all aspects of their work.

Integrity includes:

- Respecting intellectual property rights
- Acknowledging sources when appropriate
- Representing their work truthfully
- Acting with honesty and professionalism in artistic and academic matters

Trust is an essential element of the educational relationship and of professional artistic life.

Representation of the School

Students serve as ambassadors of the Pernoo School of Musical Performance both during and after their studies.


Whether performing publicly, participating in competitions, attending festivals, or engaging with the wider musical community, students are encouraged to represent the School with professionalism, generosity, and artistic integrity.

A Shared Commitment

The Pernoo School seeks to create an environment in which talented musicians can flourish artistically and personally.

This requires a shared commitment from students, teachers, and the School itself.

By embracing these responsibilities, students contribute to a culture of excellence, respect, and artistic ambition that benefits the entire community.



CHAPTER

07

Attendance Policy

Presence and reliability as foundations of professional life.

Regular attendance and active participation are essential components of artistic development.

The Pernoo School of Musical Performance places great value on commitment, reliability, and personal responsibility. Students are therefore expected to attend all scheduled activities that form part of their programme and to communicate promptly whenever circumstances affect their availability.

Individual Lessons

Students are expected to arrive on time and fully prepared for all scheduled lessons.

Lessons represent an important part of the educational process and require significant preparation from both student and teacher.

If a student is unable to attend a lesson, the School should be informed as soon as possible.

Lessons missed due to circumstances beyond the student's control may be rescheduled when possible, subject to the availability of the teacher and the School.

Lessons cancelled at short notice may not be rescheduled.

Studio Classes, Group Lessons, and Coaching Sessions

Attendance at Studio Classes, Group Lessons, and Collaborative Coaching Sessions is considered an important part of the educational experience.

Students are expected to participate actively and contribute to the collective learning environment.

If attendance is not possible, students should notify the School in advance whenever possible.

Performances and Public Events

Concerts, public masterclasses, recordings, and other performance activities form an integral part of the School's educational philosophy.

Students selected to participate in such activities are expected to honour their commitments and prepare to the highest professional standards.

Participation in public events may require additional rehearsals and preparation beyond regular lessons.

Professional Responsibility

Developing professional reliability is an important aspect of musical training.

Students are expected to:

- Arrive punctually for all scheduled activities
- Communicate promptly regarding absences or delays
- Respect the schedules of teachers, accompanists, and fellow students
- Honour commitments related to performances and projects

These habits are essential for success in the professional musical world.

Exceptional Circumstances

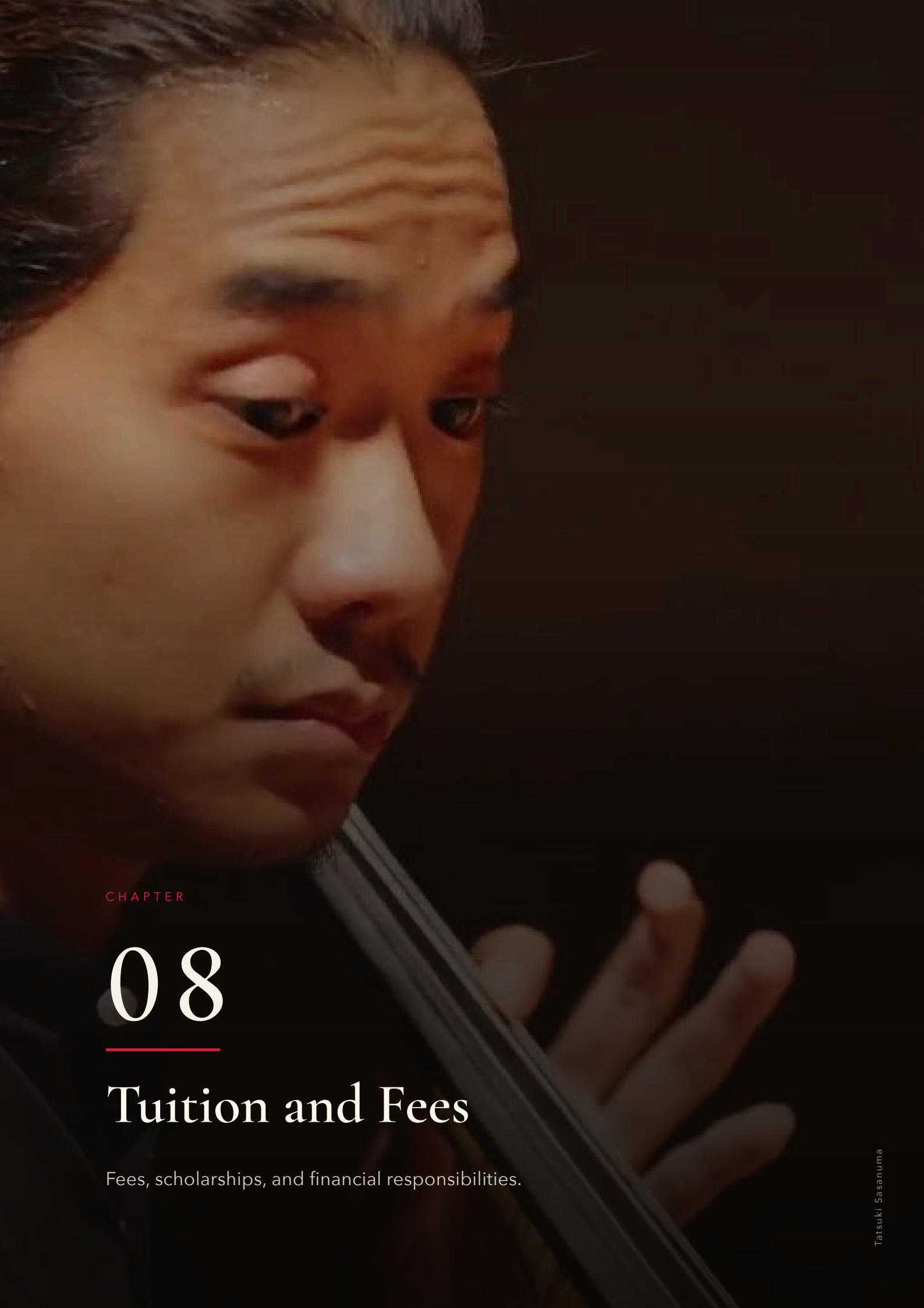
The School understands that illness, family emergencies, travel disruptions, and other unforeseen circumstances may occasionally affect attendance.

In such situations, students are encouraged to communicate openly with the School so that appropriate arrangements can be considered whenever possible.

Commitment to the Learning Process

The educational experience at the Pernoo School extends beyond individual lessons.

Students benefit not only from their own participation, but also from observing the work of others, engaging in discussions, attending performances, and contributing to the artistic life of the School.



CHAPTER

08

Tuition and Fees

Fees, scholarships, and financial responsibilities.

The Pernoo School of Musical Performance is committed to providing a highly personalised educational experience for a limited number of students.

Tuition fees contribute directly to the artistic and educational activities of the School, including individual instruction, coaching sessions, studio classes, group lessons, administrative support, and performance opportunities.

Tuition Fees

Tuition fees vary according to the programme, duration of study, and individual circumstances.

Applicants are informed of the applicable tuition fees at the time an offer of admission is made.

Any scholarship or financial assistance awarded by the School will be specified in the student's admission offer.

Application Fee

An application fee is required when submitting an application to the School.

The application fee covers the administrative review of the application and the admissions process.

Application fees are non-refundable.

For students who subsequently enrol in the School, the application fee is fully credited toward tuition.

Payment of Tuition

Tuition fees must be paid according to the payment schedule specified in the student's enrolment agreement.

The School may offer different payment arrangements, including instalment plans, depending on the programme and individual circumstances.

Students are responsible for ensuring that payments are made on time.

Failure to meet payment obligations may affect a student's continued participation in School activities.

Scholarships and Financial Assistance

The Pernoo School may, at its sole discretion, award scholarships or tuition assistance to exceptional candidates.

Scholarships are granted on the basis of artistic merit, potential, and the overall profile of the applicant.

The availability and amount of financial assistance may vary from year to year.

Receipt of a scholarship in one academic year does not guarantee renewal in subsequent years.

Additional Expenses

Students should be prepared for personal expenses related to their studies and life in Paris.

These may include:

- Housing
- Food and daily living expenses
- Transportation
- Health insurance
- Visa-related costs
- Sheet music and study materials
- Instrument maintenance and insurance
- Travel expenses
- Competition and audition fees

Students are responsible for managing these costs independently.

Refund Policy

The application fee is non-refundable.

Tuition fees become payable according to the terms outlined in the student's enrolment agreement.

In cases of withdrawal after acceptance, refunds, if any, will be determined in accordance with the conditions specified in the enrolment agreement.

The School reserves the right to assess each situation individually.

Programme Modifications

The School reserves the right to make reasonable modifications to programme content, scheduling, faculty assignments, performance opportunities, and other educational activities when necessary.

Such adjustments are made with the objective of maintaining the highest possible educational standards.

Financial Responsibility

By accepting an offer of admission and enrolling in a programme, students agree to fulfil the financial obligations associated with their studies.

Students are encouraged to plan their finances carefully before beginning their programme and to ensure that adequate resources are available for the full duration of their studies.

Questions Regarding Tuition and Fees

Applicants and students with questions regarding tuition, payment schedules, scholarships, or financial matters are encouraged to contact the School directly.

The School will be pleased to provide guidance and clarification whenever needed.



CHAPTER

09

Student Services

Practical support for your studies and your career.

The Pernoo School of Musical Performance is committed to supporting students not only in their artistic development, but also in the practical aspects of their studies and professional preparation.

Because the School welcomes a limited number of students, particular attention is given to individual guidance and personalised support.

Recording and Video Support

The ability to present oneself effectively through recordings has become an essential aspect of a modern musical career.

Students may receive guidance regarding:

- Audition recordings
- Competition videos
- Artistic presentation on camera
- Programme preparation
- Recording strategy

The School encourages students to develop the skills required for today's increasingly digital professional environment.

Professional Recording Services

High-quality video and audio recordings have become an essential component of a musician's professional profile.

To support students in the preparation of competitions, auditions, applications, websites, and professional promotion, the School may offer access to professional recording services.

Students may choose to book recording sessions organised by the School, which include the support of a professional audio engineer and a recording environment adapted to the requirements of classical music performance.

These services may be used for:

- Competition applications
- Conservatory and university auditions
- Professional portfolios
- Artist websites
- Festival applications
- Promotional materials
- Personal artistic projects

Recording services are offered subject to availability and may involve additional fees.

Further information regarding scheduling, technical specifications, and pricing is available upon request.

Career Development

The transition from student life to professional activity presents many challenges.

The School seeks to help students navigate this transition by providing guidance on topics such as:

- Competitions
- Auditions
- Professional opportunities
- Artistic projects
- Networking
- Long-term career planning

The goal is to help students build sustainable and meaningful artistic careers.

International Student Support

The Pernoo School welcomes students from around the world.

International students may receive guidance concerning:

- Visa procedures
- Housing options
- Health insurance
- Banking services
- Transportation
- Administrative procedures in France

While students remain responsible for their own legal and administrative obligations, the School aims to provide practical information and support whenever possible.

Housing Resources

The School may assist students by providing information about accommodation options in the Paris area.

Depending on availability, this may include:

- Private rentals
- Student residences
- Shared accommodation
- Temporary housing solutions

Students are encouraged to begin their housing search well in advance of their arrival.

Community and Artistic Exchange

One of the most valuable aspects of the School experience is the opportunity to interact with fellow musicians who share similar artistic ambitions.

Through lessons, performances, coaching sessions, and informal exchanges, students become part of an international community of artists committed to continuous growth and artistic excellence.

The School encourages a spirit of generosity, collaboration, and mutual support among all members of the community.

Communication and Scheduling

To facilitate communication and the organisation of School activities, the Pernoo School uses shared digital tools throughout the academic year.

WhatsApp Group

The School maintains a WhatsApp group bringing together students and staff.

The group serves as the primary channel for day-to-day communication and practical information, including:

- Schedule updates
- Rehearsal information
- Concert announcements
- Administrative reminders
- Artistic projects and opportunities

Students are encouraged to check group communications regularly in order to remain informed about School activities.

Shared Calendar

The School uses a shared Google Calendar to organise lessons, coaching sessions, rehearsals, performances, and other activities.

Students are responsible for reserving their lesson times within the available scheduling slots and for keeping their calendar information up to date.

This system provides flexibility while ensuring the efficient coordination of the School's activities.

Access Information

Access to the WhatsApp group, shared calendar, and other digital resources will be provided at the beginning of the academic year.

Students will receive all necessary instructions during the orientation process.

Student Identification Card

At the beginning of each academic year, students receive an official Pernoo School student identification card.

The card serves as proof of enrolment and may be used to access student discounts offered by certain cultural institutions, concert venues, museums, transportation services, and other organisations, subject to their individual policies.

For students enrolled in the Concert Artist Program and Artist Diploma Program, the card may also include a personalised QR code linking directly to the student's online portfolio page on the School's website.

This digital portfolio may feature:

- Biography
- Professional photographs
- Video recordings
- Repertoire highlights
- Competition results
- Performance experience
- Personal artistic profile
- Links to professional websites and social media

The objective is to provide students with a practical tool for presenting their artistic profile to presenters, festival organisers, competition administrators, artistic directors, and other music professionals.

Students are encouraged to keep their card with them throughout the academic year.

A Personalised Approach

The Pernoo School of Musical Performance is intentionally small in scale.

This allows the School to offer a level of personal attention and individual mentorship that is rarely possible in larger institutions.

Students are encouraged to make full use of the resources, guidance, and opportunities available to them throughout their studies.



CHAPTER

10

International Students and Practical Information

Preparing for life and study in Paris.

The Perno School of Musical Performance welcomes students from around the world and is committed to helping them prepare for a successful and rewarding experience in France.

Studying abroad requires careful preparation. While students remain responsible for their own administrative and practical arrangements, the School is pleased to provide guidance and support whenever possible.

Before Your Arrival

Students are encouraged to begin preparing for their move to France as soon as they accept an offer of admission.

Depending on their nationality and the length of their stay, students may need to arrange:

- A valid passport
- Visa or residence documentation
- Health insurance
- Accommodation
- Transportation plans
- Financial resources for the duration of their studies

Early preparation is strongly recommended.

Visa and Immigration

International students are responsible for ensuring compliance with all applicable immigration requirements.

The School can provide supporting documents such as:

- Letters of admission
- Confirmation of enrolment
- Tuition payment confirmations
- Programme descriptions
- Administrative attestations related to the student's studies

Visa decisions remain the sole responsibility of the relevant governmental authorities.

Students are encouraged to begin any visa application process as early as possible.

Health Insurance

All students are responsible for maintaining appropriate health insurance coverage throughout their stay in France.

Requirements vary according to nationality, visa status, and length of stay.

Students should ensure that their insurance provides adequate medical coverage for the duration of their studies.

Accommodation

Students are responsible for arranging their own accommodation.

The School may provide practical guidance and recommendations whenever possible, but cannot guarantee housing availability.

Students may choose to live:

- In Paris
- In neighbouring communities connected by public transportation

Accommodation options typically include:

- Private apartments
- Shared apartments
- Student residences
- Temporary accommodation upon arrival

Students are strongly encouraged to begin their housing search well in advance of their arrival in France.

The School may occasionally help connect incoming students with current students seeking accommodation or flatmates.

Cost of Living

Living expenses vary according to individual lifestyle and accommodation choices.

As a general guideline, students should budget for:

| EXPENSE | ESTIMATED MONTHLY COST |
|-------------------------------|------------------------|
| Accommodation | €700 - €1,500 |
| Food | €250 - €500 |
| Transportation | €90 |
| Personal Expenses | €150 - €300 |
| Total Estimated Budget | €1,200 - €2,400 |

These figures are provided for guidance only.

Transportation

The Paris region offers an extensive and reliable public transportation network, including:

- Metro
- Buses
- Trams
- Regional trains

Most students find public transportation to be the most practical way to travel between their accommodation, the School, concert venues, and cultural institutions throughout the city.

Banking and Daily Life

Students staying in France for an extended period may find it useful to open a French bank account.

Additional practical arrangements may include:

- Mobile phone services
- Internet access
- Transportation subscriptions
- Administrative registrations related to visa requirements

The School can provide general information and recommendations regarding these matters when needed.

Language

Instruction at the Pernoo School may be conducted in either English or French, depending on the needs of the student.

Fluency in French is not required for admission.

However, students are encouraged to acquire a basic knowledge of French in order to facilitate daily life and make the most of their experience in France.

Life in Paris

Paris is one of the world's great cultural capitals and offers an exceptional environment for artistic development.

Students have access to:

- Internationally renowned concert halls
- Major orchestras and opera companies
- Museums and cultural institutions
- Festivals and artistic events throughout the year
- A vibrant international artistic community

The School encourages students to take advantage of the extraordinary cultural resources available throughout the city and its surrounding region.

Joining an International Community

One of the strengths of the Pernoo School is its international character.

Students study alongside musicians from different countries, backgrounds, and artistic traditions, creating a stimulating environment of exchange, collaboration, and mutual inspiration.

The friendships, artistic partnerships, and professional relationships formed during this period often continue long after students complete their studies.

The Pernoo School of Musical Performance looks forward to welcoming students from around the world and supporting them throughout their artistic journey in France.

A young man with curly hair is shown in profile, playing a cello. He is wearing a dark jacket and has a watch on his left wrist. The background is a clear blue sky with some light clouds. The cello is a rich, dark wood color. The overall mood is serene and focused.

CHAPTER

11

Safety

Procedures, personal property, and a shared responsibility.

Emergency Procedures

In the event of an emergency, students should follow the instructions of School staff and emergency services.

Students are encouraged to familiarise themselves with:

- Building exits
- Emergency contact procedures
- Local emergency services

Emergency telephone numbers in France include:

| | | | |
|------------|--------------------|-----------|--------------------------|
| 112 | EMERGENCY SERVICES | 15 | MEDICAL EMERGENCY (SAMU) |
| 18 | FIRE BRIGADE | 17 | POLICE |

Personal Property

Students are responsible for their personal belongings, including musical instruments, equipment, sheet music, electronic devices, and other valuables.

The School cannot accept responsibility for loss, theft, or damage to personal property.

Students are strongly encouraged to maintain appropriate insurance coverage for valuable instruments and equipment.

Respect for School Facilities

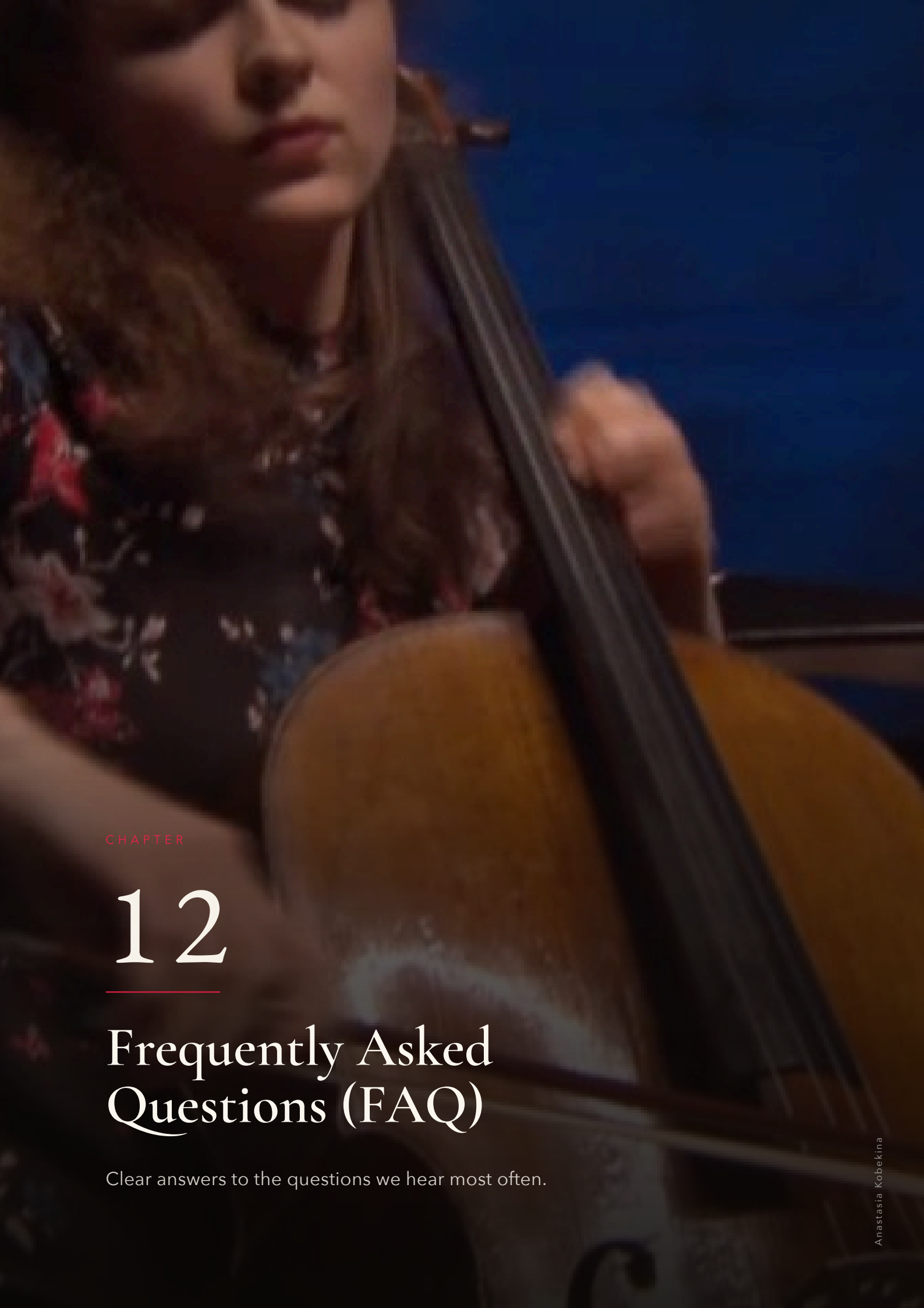
Students are expected to use all facilities responsibly and to help maintain a safe, clean, and professional environment.

Any safety concerns, damage, or maintenance issues should be reported to the School as soon as possible.

Shared Responsibility

Creating a safe and supportive environment is a shared responsibility.

Through professionalism, respect, and consideration for others, all members of the School community contribute to an atmosphere in which artistic growth and personal development can flourish.



CHAPTER

12

Frequently Asked Questions (FAQ)

Clear answers to the questions we hear most often.

Q. *Do I need to speak French to study at the Pernoo School?*

No.

Instruction may be provided in either English or French, depending on the needs of the student.

Students from all countries are welcome, and fluency in French is not required for admission.

Q. *What level is required for admission?*

The Pernoo School is intended for advanced instrumentalists and young professional musicians.

Admission is based on the applicant's artistic level, musical potential, previous training, and professional objectives.

All applications are reviewed individually.

Q. *Is there an age limit?*

There is no strict age limit.

Applicants are evaluated according to their artistic level, professional goals, and suitability for the programme.

Q. *Can I apply if I am still studying at another institution?*

Yes.

Many students combine their studies at the Pernoo School with university, conservatory, or other professional training programmes.

The School offers sufficient flexibility to accommodate a variety of educational and professional situations.

Q. *How does the admissions process work?*

The admissions process generally includes:

- Submission of an application form
- Review of the applicant's background and artistic profile
- Submission of video recordings
- Online interview with Jérôme Pernoo

Admission decisions are based on the overall quality of the application and the applicant's potential to benefit from the programme.

Q. *Can I receive a scholarship?*

The School may offer scholarships or tuition assistance to exceptional candidates.

Scholarships are awarded at the sole discretion of the School and are based primarily on artistic merit and potential.

Availability varies from year to year.

Q. *How many students are admitted each year?*

The School intentionally maintains a limited number of students in order to preserve a highly personalised educational environment.

This allows each student to receive close artistic guidance and individual attention.

Q. *Will I have opportunities to perform?*

Yes.

Performance is an essential part of the School's educational philosophy.

Students may participate in studio classes, public performances, masterclasses, recordings, competitions, auditions, and other artistic projects, depending on their programme and level of preparation.

Q. *Will I receive career guidance?*

Yes.

The School places considerable emphasis on preparing students for professional artistic life.

Guidance may include topics such as:

- Competition preparation
- Audition preparation
- Repertoire
- Professional presentation
- Recording projects
- Career planning
- Artistic development

Q. *Can the School help with visa applications?*

The School can provide supporting documentation, including letters of admission, programme descriptions, tuition confirmations, and other administrative documents required for visa applications.

However, visa decisions remain the responsibility of the relevant governmental authorities.

Q. *Can the School help me find accommodation?*

The School may provide guidance and recommendations regarding housing options in the Paris area.

However, students remain responsible for arranging and securing their own accommodation.

Q. *Can I work while studying at the School?*

Students are responsible for ensuring that any professional activity complies with the conditions of their visa, residence status, and applicable regulations.

The School cannot provide legal advice regarding immigration or employment matters.

Q. *Are lessons scheduled at fixed times?*

The School uses a flexible scheduling system.

Students reserve lesson times and other activities through the shared School calendar according to the available time slots.

Further information is provided at the beginning of the academic year.

Q. *How can I stay informed about School activities?*

The School uses a shared WhatsApp group and a shared Google Calendar to communicate schedules, announcements, rehearsals, performances, and other important information.

Access is provided at the beginning of the academic year.

Q. *What makes the Pernoo School different?*

The School combines personalised artistic mentorship, high-level musical training, regular performance opportunities, collaborative coaching, and professional guidance within a small international community.

Its objective is not only to help students become better musicians, but to help them develop into complete artists capable of building meaningful and sustainable professional careers.



CHAPTER

13

Notable Students and Alumni

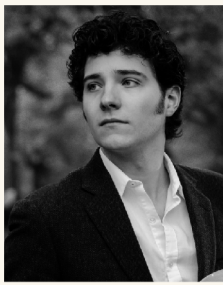
A tradition of artistic achievement and professional success.

Since the beginning of his teaching career, Jérôme Pernoo has worked with numerous young musicians who have gone on to successful international careers as soloists, chamber musicians, orchestra members, competition laureates, and professors.

The Pernoo School of Musical Performance builds upon this long tradition of artistic mentorship and professional development.

The achievements of former and current students reflect not only their talent and dedication, but also the School's commitment to helping young artists prepare for the highest levels of the profession.

Students & Alumni



ALUMNI

Johannes Gray
United States



ALUMNI

Ivan Karizna
Belarus



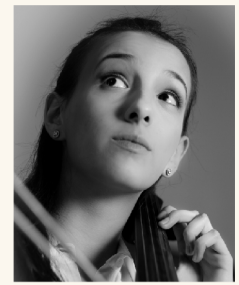
ALUMNI

Anastasia Kobekina
Russia



ARTIST DIPLOMA

Jan Losos
Poland



ARTIST DIPLOMA

Marina Martins
Brazil



ARTIST DIPLOMA

Krzysztof Michalski
Poland



ARTIST DIPLOMA

Mathilde Reuzé
France



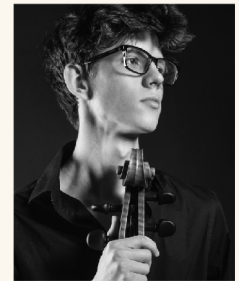
ARTIST DIPLOMA

Minje Song
South Korea



ADVANCED STUDIES

Gabriel Guignier
France



ADVANCED STUDIES

Filip Krzeszowiec
Poland



FORMER STUDENT

Anna Olivia Amaya Farias
Germany



FORMER STUDENT

Léo Ispir
France



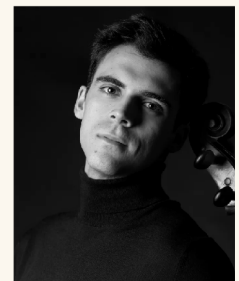
FORMER STUDENT

Shicong Li
China



FORMER STUDENT

Fabian Sturm
Germany



FORMER STUDENT

Carlos Vidal
Spain

International Competitions

Students and former students of Jérôme Pernoo have distinguished themselves in major international competitions and auditions.

Their achievements include:

- International competition prizes
- Finalist and semi-finalist appearances
- Special jury awards
- Invitations to prestigious festivals and academies

These accomplishments testify to the artistic standards expected within the School and to the dedication of the students who pursue them.

Professional Careers

Former students have established careers in a wide range of musical fields, including:

- Solo performance
- Chamber music
- Symphony orchestras
- Opera orchestras
- Teaching and higher education
- Recording projects
- International festivals

Many continue to perform throughout Europe, North America, Asia, and beyond.

Current Students

The School takes great pride in celebrating the achievements of its current students.

Students enrolled in the Concert Artist Program and Artist Diploma Program may be featured on the School's website through dedicated portfolio pages presenting their artistic profile, recordings, biography, and professional activities.

The School actively encourages students to develop a strong professional presence and to communicate their artistic work to a wider audience.

Celebrating Achievement

When students reach important artistic milestones, the School may publish dedicated articles highlighting their accomplishments.

Examples include:

- Competition prizes
- Finalist and semi-finalist appearances
- Major concert engagements
- Orchestral appointments
- Recordings and artistic projects
- Admissions to prestigious institutions
- Other notable professional achievements

These publications contribute to the visibility of the students' work and help document their artistic journey.

An International Community

The Pernoo School seeks to build a lasting international network of musicians connected by shared artistic values, professional ambition, and a commitment to excellence.

Students join not only a programme of study, but also a community whose members continue to support, inspire, and collaborate with one another throughout their careers.

The School looks forward to following the future achievements of every student and to celebrating their contribution to the musical life of their generation.

Pernoo School of Musical Performance Paris, France www.pernooschool.com



PERNOO SCHOOL
OF MUSICAL PERFORMANCE

www.pernooschool.com

admin@pernooschool.com

42 rue des Sept Arpents · 93500 Pantin
Grand Paris · France