

**SORTING MAT**

**-at**

**Not -at**

Empty dashed box for sorting words ending in -at.

Empty dashed box for sorting words not ending in -at.

Empty dashed box for sorting words ending in -at.

Empty dashed box for sorting words not ending in -at.

Empty dashed box for sorting words ending in -at.

Empty dashed box for sorting words not ending in -at.

**PICTURE CARDS**



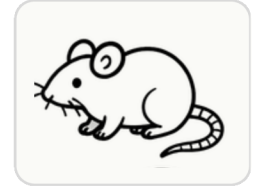
cat



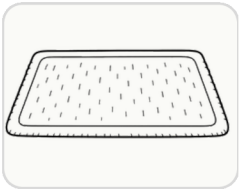
bat



hat



rat



mat



map



bag



van



pig



cup



bed



sun