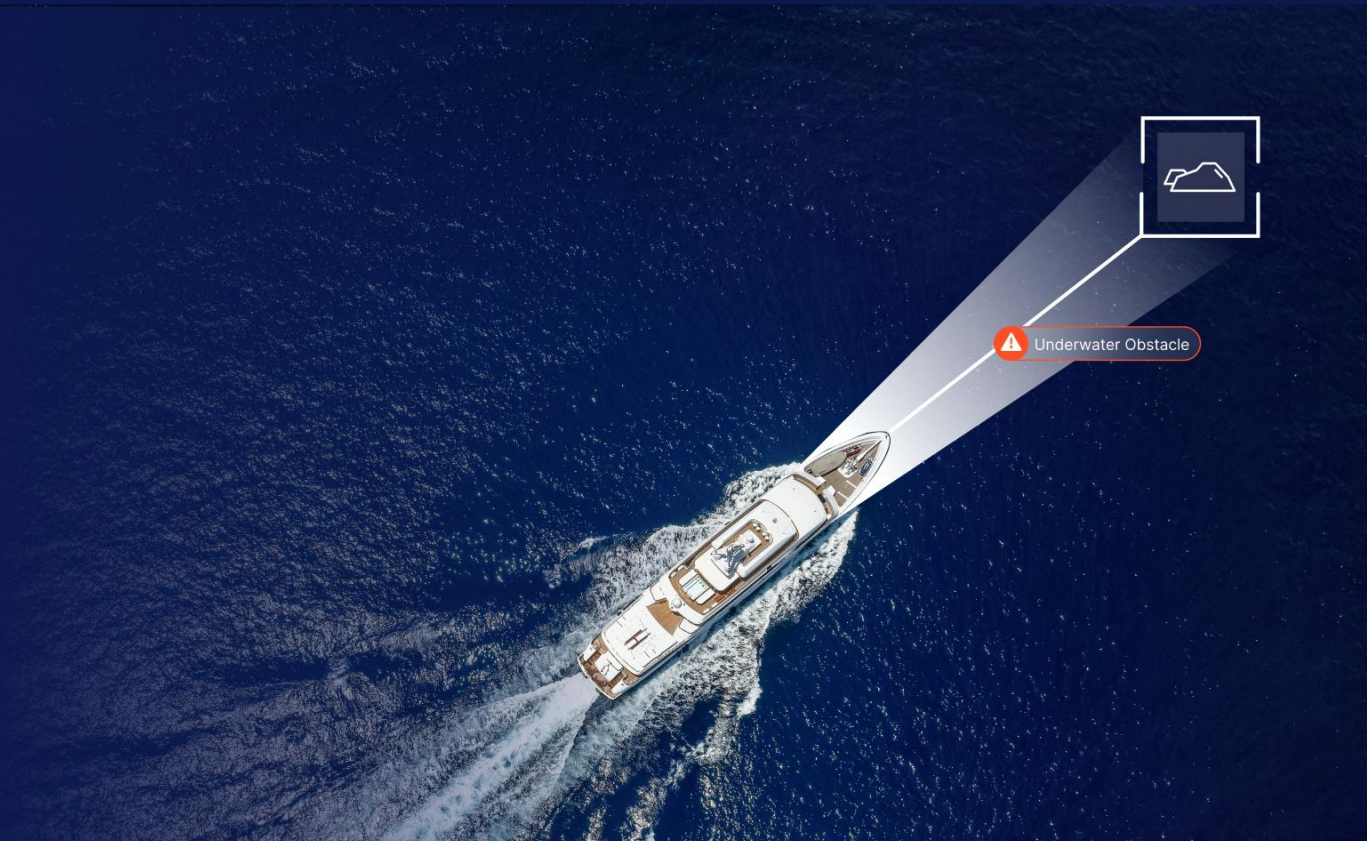




Collision Prevention System for Recreational Boats



USER MANUAL

1. System Description

WATCHIT is an advanced system intended to assist the captain and skipper in operating the boat in a safer way by providing an advanced alert about potential risks both over and under the water.

NOTE – WATCHIT is intended only as an aid to marine navigation and does not substitute safe and alert vessel navigation and operation. Please refer to the full warning and disclaimer in the appendix (7.1).

2. General

Once the system was installed onboard your boat and was set with the right boat parameters, there is no need to actively operate the system*.

User may adjust some of the system's parameters in the Settings menu as explained below.

*Except of Anchor Monitoring activation which requires manual activation



Image 1 - WATCHIT System

WATCHIT has different modes of operation which are being automatically switched by the system:

- **Open Water Mode** – In this mode the system will generate a vocal alert in case it has detected a potential hazard on the vessel's path. The alert will be triggered ~30 seconds before impact in order to allow enough time for the skipper to react – the exact time will be determined by the system's risk assessment algorithm. Whenever an endangering object enters the DAZ (Dynamic Alert Zone), a whistle sound will be heard followed by a vocal alert indicating the obstacle type (above/under the water obstacle, shallow water or boat-to-boat collision alert).
- **Multiple Obstacles Mode** – Whenever the system detects multiple obstacles in the near surrounding and the vessel speed is less than 20 Knots - the system will automatically switch to Multiple Obstacle mode and the vocal alerts will be replaced with beeps to inform the captain about any potential risks. The beeps frequency will increase as the risking object gets closer to the vessel.
- **Marina Mode** – Whenever the vessel enters a marina, the system will switch to Marina Mode. In this mode no vocal alerts will be heard

- **Drift Mode** – When the speed drops below 2 knots, the system will automatically switch to Drift Mode to provide 360° protection
- **Anchor Mode** – this is the only mode of operation needs to be manually activated and set by the captain.
-

3. WATCHIT Display

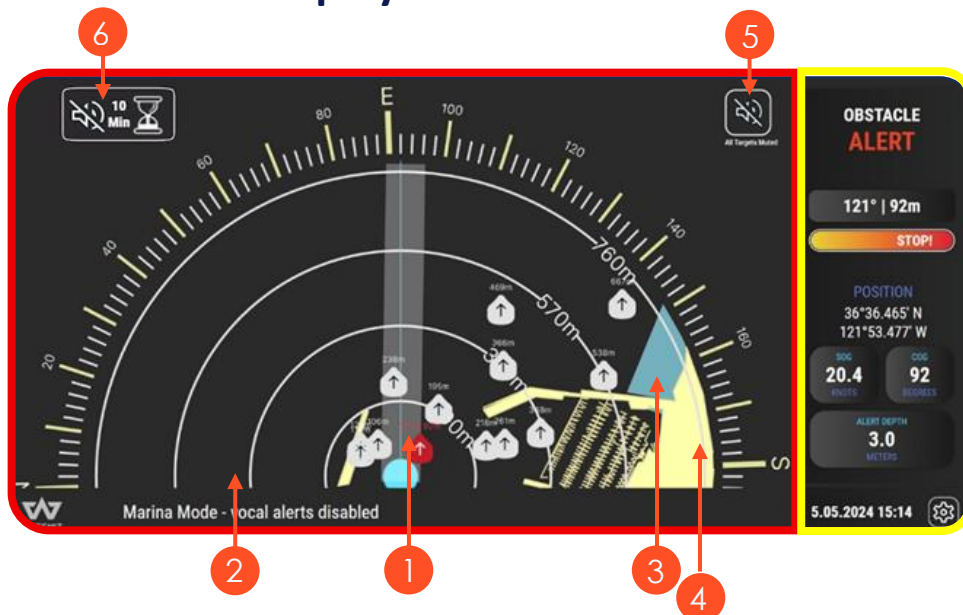


Image 2 - Main Screen

The WATCHIT display has 2 sections. The left side (see the red colored sector in Image 2) presents the vessel near surrounding and its search radius is constantly adjusted based on the vessel speed and other calculated parameters. The faster the boat travels – the greater the monitored area is.

The gray rectangle [item 1] is the Dynamic Alert Zone (DAZ) and it represents the projected path the vessel is planned to cross within the next ~30 seconds. Once a potential hazard enters the DAZ, it will be marked in red and will trigger the alarm (based on the current system's mode of work). The DAZ dimensions are constantly being recalculated based on real-time navigational data, level of control and other parameters that are being evaluated by the WATCHIT algorithm. The display presents 3 types of areas colors:

- Dark gray [2] – deep water
- Blue [3] – shallow water based on the safety depth as defined by user
- Yellow [4] – dry land

On the top right corner there is a silent button [5] to stop the system from alerting on the **specific obstacle** the system is currently alerting about. New objects entering the DAZ will trigger the alert even if the previous one was silenced. The user can also use the '10 minutes silent' button [6] for longer vocal alerts cancelation.

On the right side of the display (marked in yellow) there are 2 display fields – on the top the alert data section and below it the vessel navigational data section including the alert safety depth as it was pre-defined by the user.

NOTE – different measure units can be set by the user in the Settings menu.

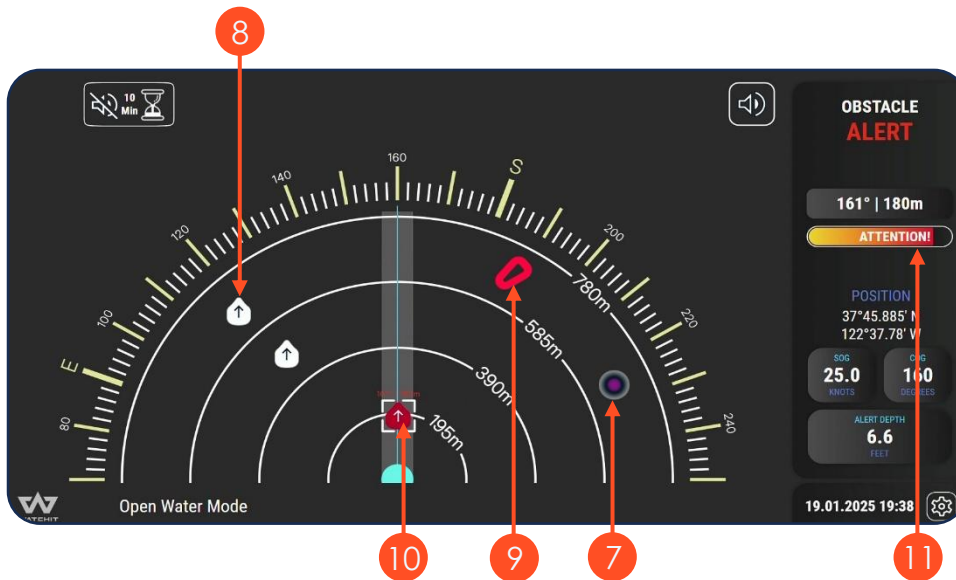


Image 3 - Obstacle ahead

There are 3 icons for different obstacle types (see image 3):

- Underwater obstacle [7] (shipwreck, underwater rock, etc.)
- Obstacle above the water line [8] (rock, buoy, floating platform, etc.)
- An endangering AIS target [9] (Only available if both boats are equipped with AIS)
- When an obstacle has entered the DAZ, it will be marked in red [10], and a ATTENTION progress bar [11] will appear on the alert data display accompanied by the bearing and distance to the endangering object.

4. WATCHIT Modes of Operation

4.1. Open Water Mode

In Open Water mode, WATCHIT scans the near surroundings of the boat to detect potential hazards that might endanger the boat in the next ~30 seconds (the exact number is being calculated by the WATCHIT risk assessment algorithm which evaluates multiple real-time factors). Whenever a potential risk enters the DAZ rectangle, it triggers the relevant vocal alert:

- “Danger, shallow water ahead” (when entering a shallow water area as defined by the user)
- “Danger, underwater obstacle ahead” (underwater rock, shipwreck, etc.)
- “Danger, obstacle ahead” (buoy, fish-farm, oil rig, etc.)
- “Danger, Collision alert” (boat to boat collision or collision with other floating obstacle)

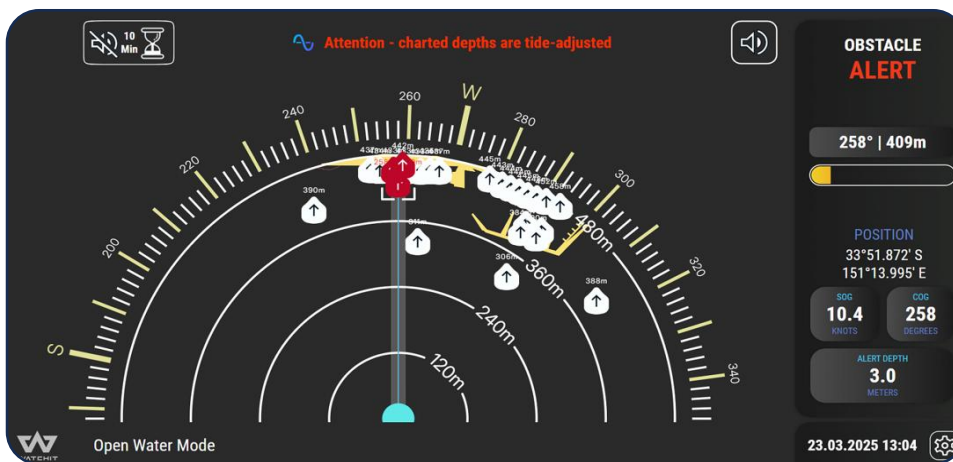


Image 4 - Open Water Mode

4.2. Multiple Obstacles Mode

In case the system has detected that there are multiple potential hazards in the near surroundings of the boat – it will automatically switch to Multiple Obstacles Mode (see image 5).

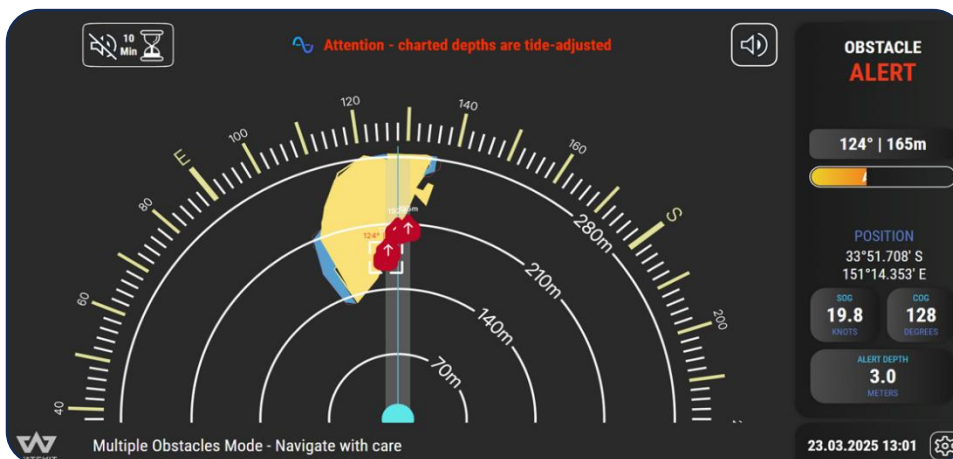


Image 5 - Multiple Obstacles Mode

While the system is in Multiple Obstacles Mode, alerting beeps will inform the captain about any objects getting closer to the vessel. As the distance to the potential hazard decreases, the beeps frequency will be increased.

In this mode of operation, as the boat is navigating in congested water, the alert radius will be smaller to ensure better alerts accuracy.

4.3. Drift Mode

When the boat's speed is less than the Drift Mode entry speed threshold (can be set under the Vessel Settings tab in the Settings Menu) – the system will switch to Drift Mode. While in this mode of operation, the system will scan 360° to detect potential hazards and trigger the alarm in the event of the boat drifting towards an obstacle.

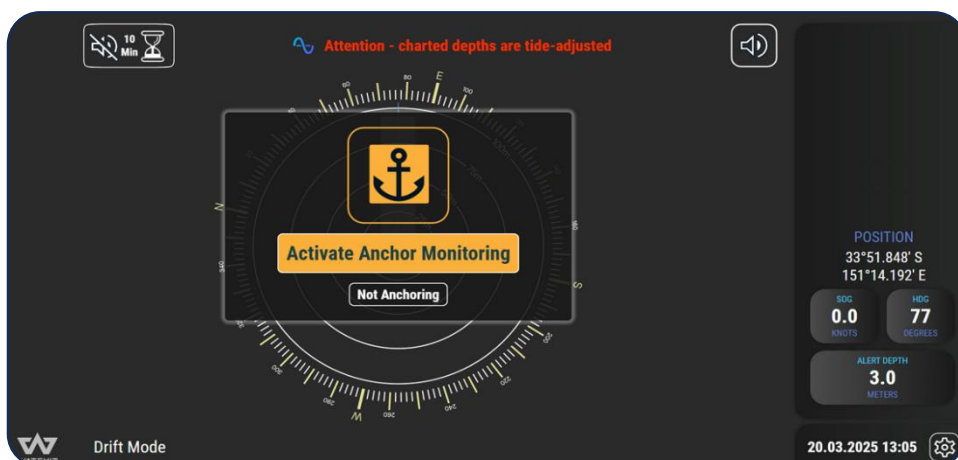


Image 6 - Drift Mode

4.4. Anchor Mode

Once the boat slows down and the system will automatically switch to Drift Mode – the user will be able to tap on the ACTIVATE ANCHOR MONITORING button that will popup (see image 6). When activated, the Anchor Setting menu will pop up (see image 7)

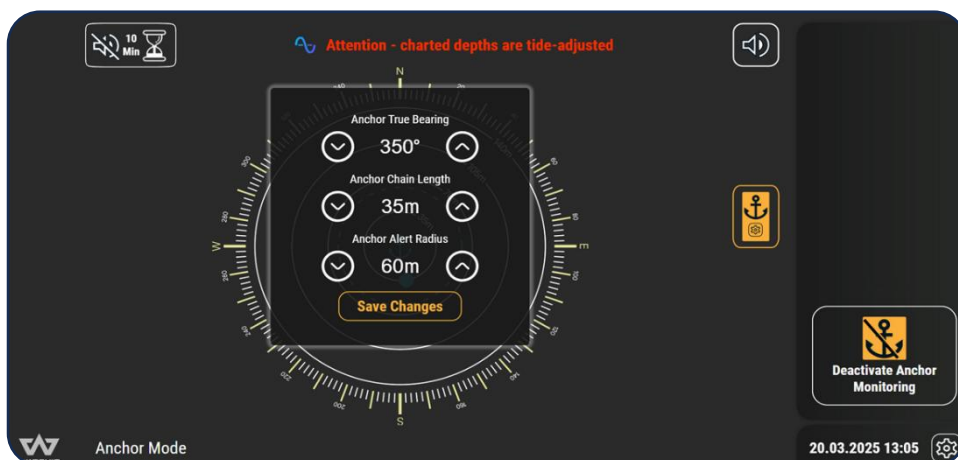
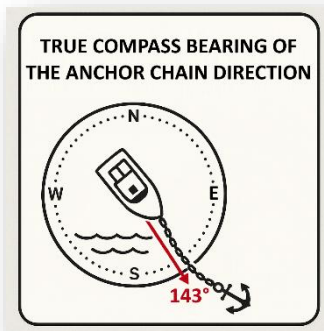


Image 7 - Anchor Mode Settings

First, set the **TRUE DIRECTION** towards the anchor as you estimate it. Second, set the length of the **RELEASED CHAIN** length as you estimate it. Finally, set the desired alert radius to define what is the allowed area for the boat to swing at while on anchor.



Once completed – tap the SET ANCHOR button.

The anchor position will be marked with an anchor icon [12] at the center of the display, the boat location will be presented as blue dot [13] and the alert circle with a dashed circle [14].

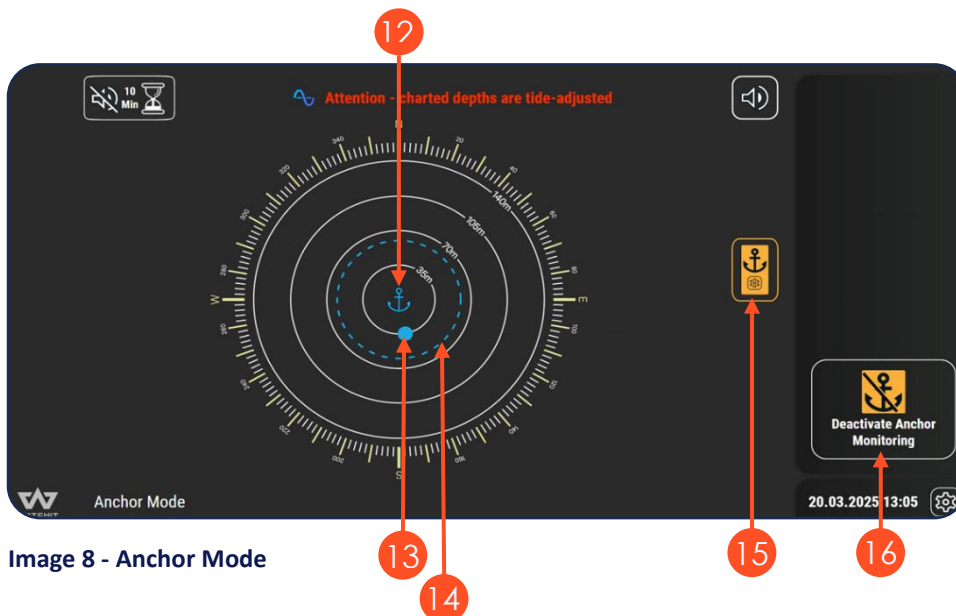


Image 8 - Anchor Mode

In case the boat exits the alert radius – a vocal alert will be heard. If the boat is drifting towards an obstacle, it will also trigger the relevant alarm to notify about the upcoming potential risk.

4.5. Marina Mode

When entering a marina, the system will automatically switch to Marina Mode (see image 9) to avoid interference with the mooring maneuvers.

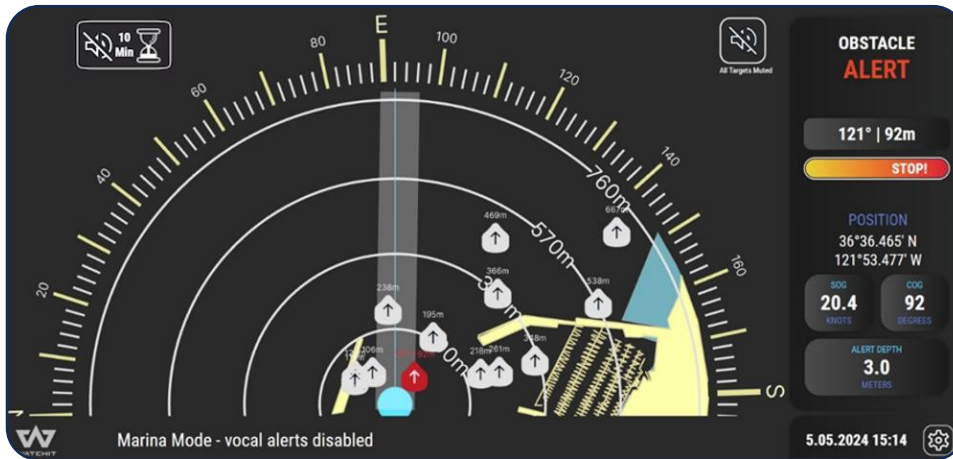


Image 9 - Marina Mode

NOTE – in case you have entered a marina and the system did not automatically switch to Marina Mode – please contact support@watchit.ai with the name and location of the marina and we'll have it added to our database for your better experience.

4.6. No Navigation Data

In the event of no GPS signal (see image 10) or available navigation data - the below popup will be presented.

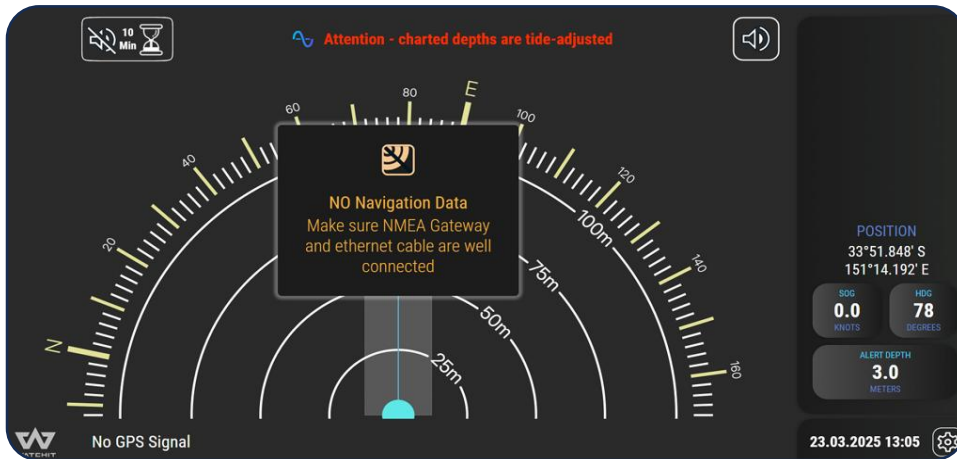


Image 10 - No Navigation Data

5. WATCHIT EYE

WATCHIT EYE is a radar based alerting feature, this functionality requires the installation of the WATCHIT EYE sensor on the boat. The sensor field of view is $\pm 50^\circ$ from the boat's headline. It constantly scans ahead of the boat to detect any floating objects that might endanger the boat. Whenever there is a detection [17], it will be displayed on the WATCHIT UI (see image 11). When there is a potential risk to the boat a "WATCHIT, Collision alert" notification will be heard. This functionality, like all others, doesn't need to be operated and it adjusts its functionality automatically based on the WATCHIT risk assessment algorithm.

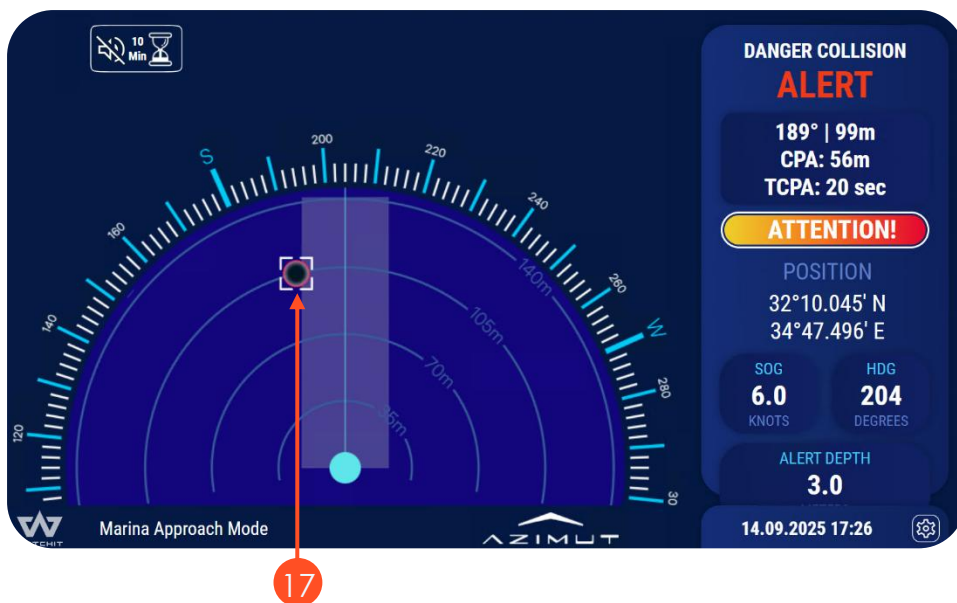


Image 11 – Endangering target detection

6. WATCHIT User Settings Screen

In order to enter the User Setting screen, tap on the Settings button [18] on the bottom right corner of the screen.

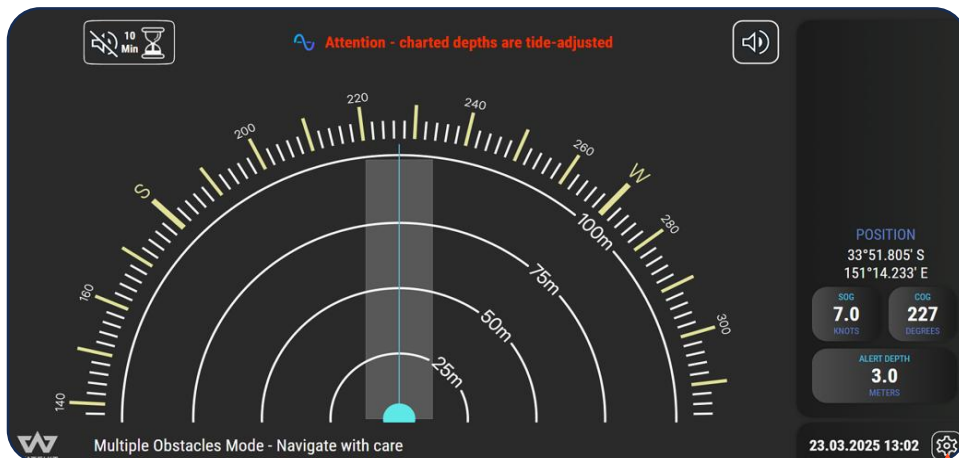


Image 12 - Entering the User Settings screen

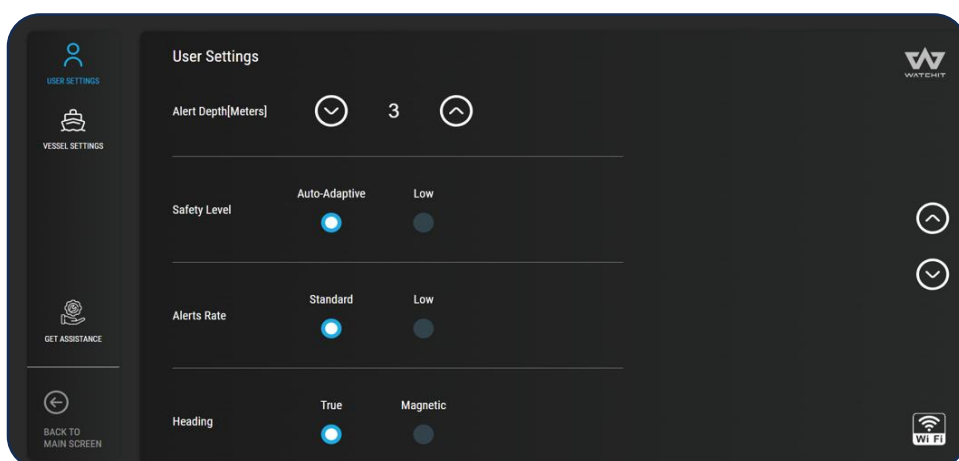


Image 13 - User Settings screen

In this screen the operator can set the following:

- Set the alert depth threshold value
- **NOTE** – The water depth for alert is measured from the **sea level** and not below keel
- Control the audio alerts volume
- **NOTE** – Open cockpit motorboats can set different volume settings for low and & high speeds. To enable this function, go to the VESSEL SETTINGS tab located on the top left corner of the Settings Menu and activate the 'Open Cockpit' toggle button.
- Perform a sound test
- Connect WATCHIT system to the boat's Wi-Fi network in case there is one available

7. Appendix

7.1. Full warning and disclaimer information

Safety warnings

Failure to adhere to the following warnings may result in death, bodily injuries and property damages.

This WATCHIT system is intended only as an aid to navigation and does not substitute safe and alert vessel navigation and operation by a qualified operator.

Always keep a permanent watch over the vessel's course and operation, allowing you to control and respond to hazards and unexpected situations as they occur. Failure to keep a permanent watch puts the operator, the vessel, and others at serious risk of harm.

Do not use the WATCHIT system as a navigational tool as it is not intended as such. When operating a vessel, cross-check information and warnings issued by the WATCHIT system with other navigation sources, such as visual sightings, official government charts, and waterway rules.

Only official government charts and notices contain all the up-to-date information required for safe navigation and operation of a vessel, and the vessel operator is responsible for using them properly. It is the vessel operator's responsibility to use official government charts, official notices, exercise caution and proper vessel operation and navigational skills when using the "WATCHIT" system.

Disclaimer, warranty and limitation of liability.

The "WATCHIT" system is warranted to be materially free from defects in materials, design and workmanship for 12 months from the date of purchase or a longer period if stated in your terms of sale. In case any system components fail in normal use within this period, WATCHIT will, at its sole option, (i) repair the system using new parts or used parts that satisfy WATCHIT quality standards, (ii) replace the system with a new system or a refurbished system that meets WATCHIT's quality standards, or (iii) exchange the system for a full refund of its purchase price. Such remedy shall be the sole and exclusive remedy in connection with the WATCHIT system. This limited warranty does not apply to: (i) cosmetic damage, such as scratches, nicks and dents; (ii) consumable parts; (iii) damage caused by accident, abuse, misuse, water, flood, fire, or other acts of nature or external causes; (iv) damage caused by installation or service performed by anyone who is not an authorized service provider of WATCHIT; or (v) damage to a product that has been modified or altered without the written permission of WATCHIT.

The warranty and the remedies expressly set forth above are exclusive and in lieu of, and WATCHIT and any and all parties acting on its behalf, expressly disclaim any and all other, representations and warranties of any kind, whether express, implied, or statutory, regarding the completeness, accuracy, non-infringement, operability, quality, merchantability, or fitness for any particular purpose of the WATCHIT system and the services provided thereby. The WATCHIT system and the services provided thereby are to be used on an "as is, with all faults" and "as available" basis and without any other warranties, representations or guarantees. Furthermore, WATCHIT makes no warranty that all the WATCHIT system functions and services will be uninterrupted, timely, secure, or error-free. The above disclaimers will not apply in jurisdictions that do not allow the exclusion of implied warranties.

To the maximum extent permitted by applicable law, except for the specific remedies expressly set forth above, in no event shall WATCHIT be liable for any direct, indirect, incidental, special, punitive, exemplary, or consequential damages (including, but not limited to, procurement of substitute goods or services; loss of use, revenue, data, or profits; or business interruption)

however caused or based on any theory of liability arising in any way, or related to the use, misuse or inability to use the WATCHIT system or the services provided thereby or from any defects in the WATCHIT system or the services provided thereby, even if advised of the possibility of such damage. Notwithstanding the aforementioned, WATCHIT's entire and aggregate liability in connection with the WATCHIT system, shall not exceed the system purchase price. By electing to use the system the user accepts such allocation of risk and agrees to release WATCHIT from any and all liabilities, obligations, claims, or demands in excess of WATCHIT's entire and aggregate liability set forth herein. The foregoing limitations will apply even if the above stated remedy fails of its essential purpose. The above limitations will not apply in jurisdictions that do not allow the limitation of liability for said damages.

The above terms and conditions shall be governed by the laws of the state of Israel, without giving effect to its conflict of laws provisions. The competent courts of Tel Aviv district, shall have exclusive jurisdiction over any and all disputes, claims, and actions arising from or in connection with the WATCHIT system and the services provided thereby.

7.2. Privacy Policy

WATCHIT by Aqua Marina Mobile Application Privacy Policy

Last Update: June 20th, 2024

We Aqua Marina Technologies Ltd. (hereinafter “**Aqua Marina**”, “**We**”) believe that protecting the security and privacy of your personal data is important. This Privacy Policy explains how we collect, store, use, disclose and transfer (hereinafter “**process**”) your personal data.

1. Processing of personal data related to your use of our applications

Categories of personal data processed, and purpose of the processing

When using our applications and services (“**Application**”), we may process the following categories of personal data:

- Your physical location, navigational data, collision alerts, and other information generated by Application’s services.
- Your contact information, such as full name, mobile phone number and email address;
- Information submitted as part of a support request, survey or comment or post;
- Further personal data that you provide by filling in forms in our application; and
- Information on your interaction with the Application, including your device and user identifier, information on your operating system, sites and services accessed during your visit, the date and time of each visitor request.

We process your personal data for the following purposes:

- To provide the Application’s services and functions which include creating and administering your online account, updating, securing, and troubleshooting, providing support, as well as improving and developing our application and services;
- To verify your identity;
- To answer and fulfill your requests or instructions;
- To process your order or to provide you with access to specific information or offers;
- To contact you with information and offers concerning our products and services, to send you further marketing information or to contact you in the context of customer satisfaction surveys; and
- As reasonably necessary to enforce the Application’s terms, to establish or preserve a legal claim or defense, to prevent fraud or other illegal activities, including attacks on our information technology systems.

2. Processing of personal data for customer satisfaction surveys and for direct marketing

Where and as permitted under applicable law, we may process your contact information for direct marketing purposes (e.g. trade show invitations, newsletters with further information and offers concerning our products and services) and to carry out customer satisfactions surveys, in each case also by e-mail.

You may object to the processing of your contact data for these purposes at any time by writing to support@watchit.ai or by using the opt-out mechanism provided in the respective communication you received.

3. Transfer and disclosure of personal data

We only transfer your personal data as described below:

- Affiliated Companies and sales partners
- For the purpose of and to the extent necessary to conduct our business relationship with you, we may share your personal data with affiliates and other third parties (e.g., sales partners and agents). We, for example, sell certain products and services only via local business relationships and in this case, we may transfer your personal data to our respective local affiliates or other sales partners conducting the business relationship with you.
- Service Providers
- We employ affiliates and other companies to perform functions on our behalf, such as IT-services or payment processing services. These affiliates, such as Amazon (AWS) and FloLive, as well as other companies process personal data only for the purpose of such services.
- Other third parties
- We may transfer personal data to other third parties in connection with complying with legal obligations or establishing, exercising or defending rights or claims (e.g., for court and arbitration proceedings, to regulators, law enforcement and government authorities, to attorneys and consultants).

The recipients of your personal data may be located outside of the country in which you reside.

4. Retention periods

Unless indicated otherwise at the time of the collection of your personal data, we erase your personal data if the retention of that personal data is no longer necessary for the purposes for which they were collected or otherwise processed, or to comply with legal obligations (such as retention obligations under tax or commercial laws).

5. Your rights

The data protection laws entitle you to specific rights in relation to your personal data. In particular, and subject to the legal requirements, you may be entitled to:

- Obtain from us confirmation as to whether or not personal data concerning you are being processed, and where that is the case, access to the personal data;
- Obtain from us the correction of inaccurate personal data concerning you;
- Obtain from us the erasure of your personal data;
- Obtain from us restriction of processing regarding your personal data;
- Data portability concerning personal data, which you actively provided;
- Object, on grounds relating to your particular situation, to further processing of personal data concerning you; and withdraw your consent to our processing of your personal data.

You may contact us regarding on of your rights at any time by writing to support@watchit.ai.

6. Security

To protect your personal data against accidental or unlawful destruction, loss, use, or alteration and against unauthorized disclosure or access, we use adequate physical, technical and organizational security measures.

7. Data privacy contact

Our Data Privacy Officer provides support with any data privacy related questions, comments, concerns or complaints or in case you wish to exercise any of your data privacy related rights. The Data Privacy Officer may be contacted at: support@watchit.ai.

The Data Privacy Officer will always use reasonable efforts to address and settle any requests or complaints you bring to its attention. Besides contacting the Data Privacy Officer, you always have the right to approach the competent data protection authority with your request or complaint.

8. Processing under the EU's General Data Protection Regulation

WATCHIT Application

Aqua Marina Technologies is the Data Controller in the meaning of the General Data Protection Regulation for the processing activities described in this Privacy Policy.

Legal basis of the processing

The General Data Protection Regulation requires us to provide you with information on the legal basis of the processing of your personal data.

The legal basis for our processing data about you is that such processing is necessary for the purposes of:

- exercising our rights and performing our obligations under any contract we make with you (Article 6 (1)(b) General Data Protection Regulation) ("**Contract Performance**");
- Compliance with our legal obligations (Article 6 (1)(c) General Data Protection Regulation) ("**Compliance with Legal Obligations**"); and/or
- Legitimate interests pursued by us (Article 6 (1)(f) General Data Protection Regulation) ("**Legitimate Interest**").
- Generally, the Contract Performance pursued by us in relation to our use of your personal data is the efficient performance or management of your use of the Application.
- Where the below table states that we rely on our legitimate interests for a given purpose, we are of the opinion that our legitimate interest is not overridden by your interests and rights or freedoms, given (i) the regular reviews and related documentation of the processing activities described herein, (ii) the protection of your personal data by our data privacy processes, (iii) the transparency we provide on the processing activity, and (iv) the rights you have in relation to the processing activity. If you wish to obtain further information on this balancing test approach, please contact our Data Privacy Officer at: [\[support@watchit.ai\]](mailto:support@watchit.ai).

In some cases, we may ask if you consent to the relevant use of your personal data. In such cases, the legal basis for us processing that data about you may (in addition or instead) be that you have consented (Article 6 (1)(a) General Data Protection Regulation) ("**Consent**").

| Purpose | Legal Basis |
|---|--|
| Processing of personal data in the context of the Application | |
| To provide the Application's services and functions which include providing and administering your online account, updating, securing, and troubleshooting, providing support, as well as improving and developing our application, | <p>Contract Performance (Article 6 (1) (b) General Data Protection Regulation)</p> <p>Legitimate Interest (Article 6 (1) (f) GDPR)</p> <p>Consent, if voluntarily provided (Article 6 (1) (a) GDPR)</p> |
| To verify your identity | <p>Contract Performance (Article 6 (1) (b) GDPR)</p> <p>Legitimate Interest (Article 6 (1) (f) GDPR)</p> |
| To answer and fulfill your requests or instructions | <p>Contract Performance (Article 6 (1) (b) GDPR)</p> <p>Legitimate Interest (Article 6 (1) (f) GDPR)</p> |
| To provide you with access to specific information | <p>Contract Performance (Article 6 (1) (b) GDPR)</p> <p>Legitimate Interest (Article 6 (1) (f) GDPR)</p> |
| To send you customer satisfaction surveys | <p>Consent, if voluntarily provided (Article 6 (1) (a) GDPR)</p> <p>Legitimate Interest (Article 6 (1) (f) GDPR)</p> <p>Consent, if voluntarily provided (Article 6 (1) (a) GDPR)</p> |
| As reasonably necessary to enforce the Application's terms, to establish or preserve a legal claim or defense, to | Compliance with Legal Obligations (Article 6 (1) (c) GDPR) |

| Purpose | Legal Basis |
|--|--|
| prevent fraud or other illegal activities, including attacks on our information technology systems | Legitimate Interest (Article 6 (1) (f) GDPR) |
| Processing of personal data for customer satisfaction surveys and for direct marketing | |
| Processing of your contact information for direct marketing purposes (e.g. trade show invitations, newsletters with further information and offers concerning our products and services) and to carry out customer satisfactions surveys | Consent , if voluntarily provided (Article 6 (1) (a) GDPR) Legitimate Interest (Article 6 (1) (f) GDPR) |

International data transfers

In the event that we transfer your personal data outside the European Economic Area, we ensure that your data is protected in a manner which is consistent with the General Data Protection Regulation. Therefore, and if required by applicable law. We transfer personal data to external recipients outside the European Economic Area only if the recipient has entered into [EU Standard Contractual Clauses](#) with us.

Your competent data protection authority

In case of data privacy related concerns and requests, we encourage you to contact our Data Privacy Officer at support@watchit.ai. Besides contacting the Data Privacy Officer, you always have the right to approach the competent data protection authority with your request or complaint.

9. Further information for US residents

If you are a U.S. resident, then please take note of the following:

Usage by Children

This Application is not directed to children under the age of thirteen. We will not knowingly collect personal data from children under the age of thirteen without insisting that they seek prior parental consent if required by applicable law. We will only use or disclose personal data about a child to the extent permitted by law, to seek parental consent, pursuant to local law and regulations or to protect a child.

State Rights

Depending on the US state in which you reside, you may have special rights with respect to your personal data. The following rights may be applicable to the residents of the following US states (hereinafter “**States**”):

- California
- Virginia
- Colorado
- Connecticut

The purpose of this policy is to provide information to residents of these States, and to notify them of their rights under the law of their state of residence. This section is not applicable to and may not be relied upon by anyone who resides outside of the listed States. If you reside in one of the States, you may have additional rights with respect to your personal data.

Exercise of Applicable Rights; Appeal

In order to exercise any rights that may be available to you under the law of the state in which you reside (for example, any rights to deletion or disclosure of personal data or to appeal a decision that we have made with respect to your request), please contact us at: support@watchit.ai.

Please note that any requests may be subject to verification of the identification of the requestor. The method we would use to verify your identity will be different depending on the manner and context in which your data was collected and may require the provision by you of such personal information as may be necessary to match you to our records of you (if any). Depending on the laws of your state, you may be entitled to use an authorized agent to exercise your rights on your behalf and, if you choose to do so, such an agent may contact us in the same manner as described above, and will also be required to verify their own identity and their authority to act on your behalf.

If you have questions, concerns or comments, please contact us at support@watchit.ai.

7.3. Supported Devices

WATCHIT is compatible with the below navigation systems models:

Garmin - GPSMAP® 7x2 Plus, GPSMAP® 9x2 Plus, GPSMAP® 12x2 Plus, GPSMAP® 7x3, GPSMAP® 9x3, GPSMAP® 12x3, GPSMAP® 16x3, GPSMAP® 8x10, GPSMAP® 8x12, GPSMAP® 8x16, GPSMAP® 8x17, GPSMAP® 8x22, GPSMAP® 8x24, GPSMAP® 9x19, GPSMAP® 9x22, GPSMAP® 9x24, GPSMAP® 9x27, GPSMAP® A12, GPSMAP® A7 Chartplotters, GPSMAP® 8700 Black Box, TD 50

SIMRAD – NSO evo3/3S (16/19/24), NSS evo3/3S (7/9/12/16), NSX (7/9/12), NSX Ultrawide (12/15), IDS (9/12), GO(7XSR/9/12)

B&G – Zeus³/3S Glass Helm (16/19/24), Zeus³/3S (9/12/16), Zeus S (7/9/12), Vulcan(7R/9/12)

Lowrance – HDS Pro (9/10/12/16), HDS Live (7/9/12/16), HDS Carbon (7/9/12/16), Elite FS(7/9)

Raymarine - Raymarine Axiom® and Axiom® 2 MFDs running the LightHouse™ 4 operating system version 4.5 or above

In case you can't find your system in the above list, please contact support@watchit.ai for more information