

The Critical Need for Evergreen Fire/Rescue to Serve the Community



Addressing Rising Demand and Increased Risk, and Providing Fire Protection & Emergency Services for the Community





The Challenge

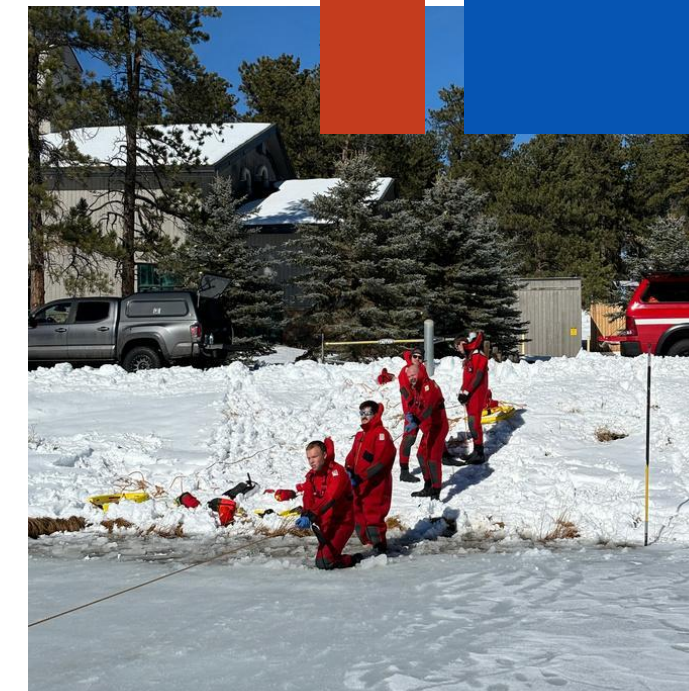
Rising Demand & Risk

■ The Impending Revenue Gap

Demand for fire and emergency services is growing and beginning to outpace revenue. Increased risk and rising costs will significantly impact the District starting in 2027.

■ Bottom Line

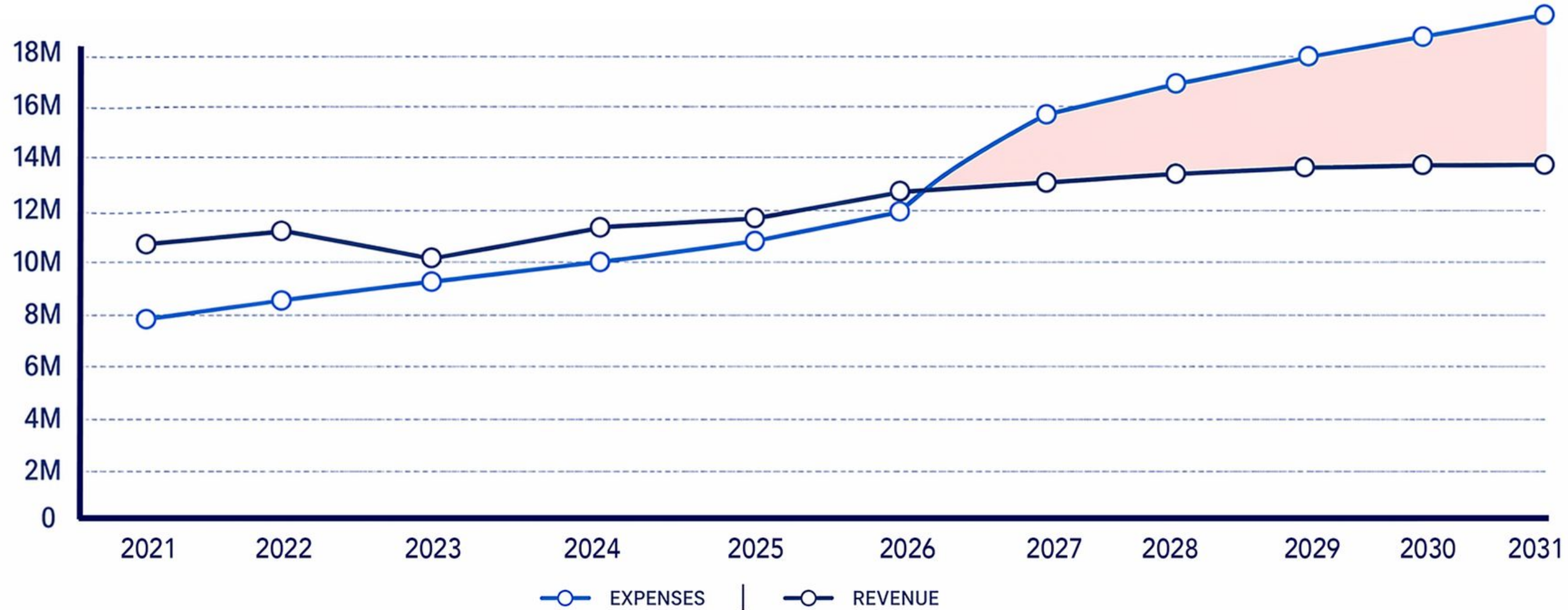
Without additional revenue by 2027, we will not be able to reach the high level of planned additional fire and emergency services residents expect and deserve.





The Challenge

Revenue & Expenses



Without new revenue we will not be able to meet the growing needs of the community.



The Challenge

Growing Demand & Personnel Gaps

■ Increased Demand

Calls for service have increased by 107% over the last ten years.

■ National Standards

EFR is striving to meet or exceed national standards for emergency response. A 2025 third-party analysis identified limited funding to hire and retain full-time firefighters as a key weakness.

■ Professional Personnel Shortage

More paid firefighters and paramedics are needed, alongside maintaining volunteer levels, to properly serve the community.

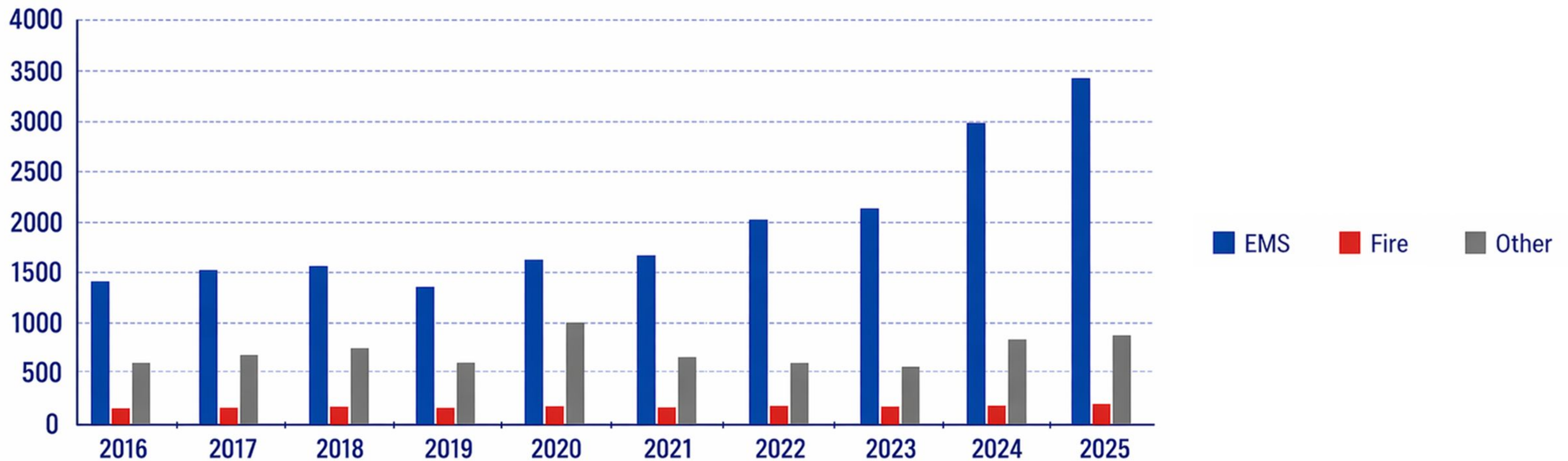
■ Coverage

The District covers nearly 126 square miles and serves approximately 26,000 residents. Out of eight fire stations, only two are fully staffed and operate 24/7.



The Challenge

Increased Demand



In 2016 we had 2,097 calls for service including 1,380 requiring Emergency Medical Services

In 2025 we had 4,340 calls for service including 1,794 requiring Emergency Medical Services



Evidence of Rising Costs

Equipment & Wildfire Mitigation

■ Equipment Inflation

The cost of emergency equipment continues to increase significantly.

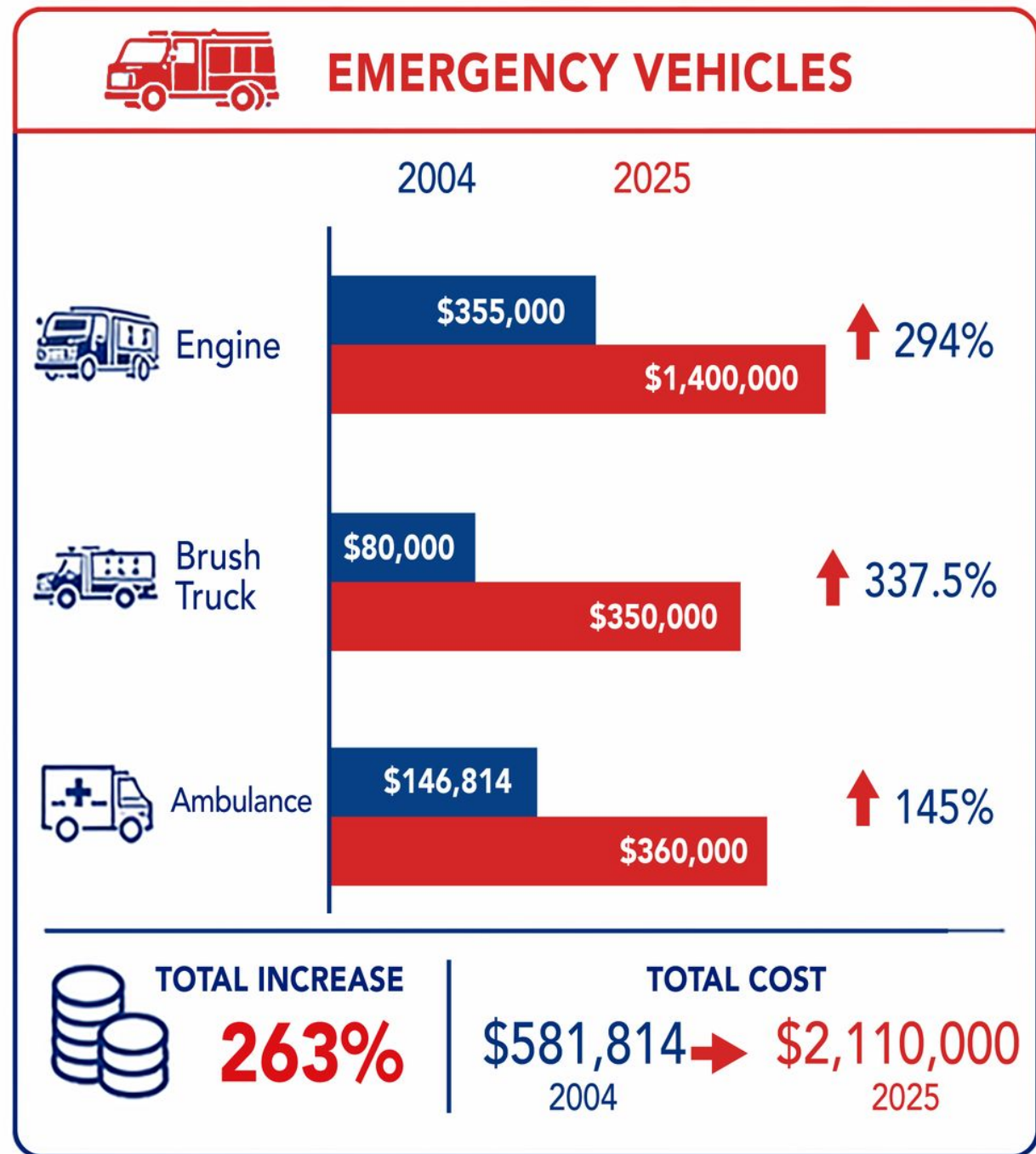
- A new engine is now estimated at **\$1.4 million**, up from **\$650,000** five years ago.
- Personal protective equipment (PPE) and medical supplies have **increased 55%** over the past ten years.

■ Wildfire Risk

Costs associated with community-prioritized wildfire prevention and mitigation continue to rise as the risk increases.



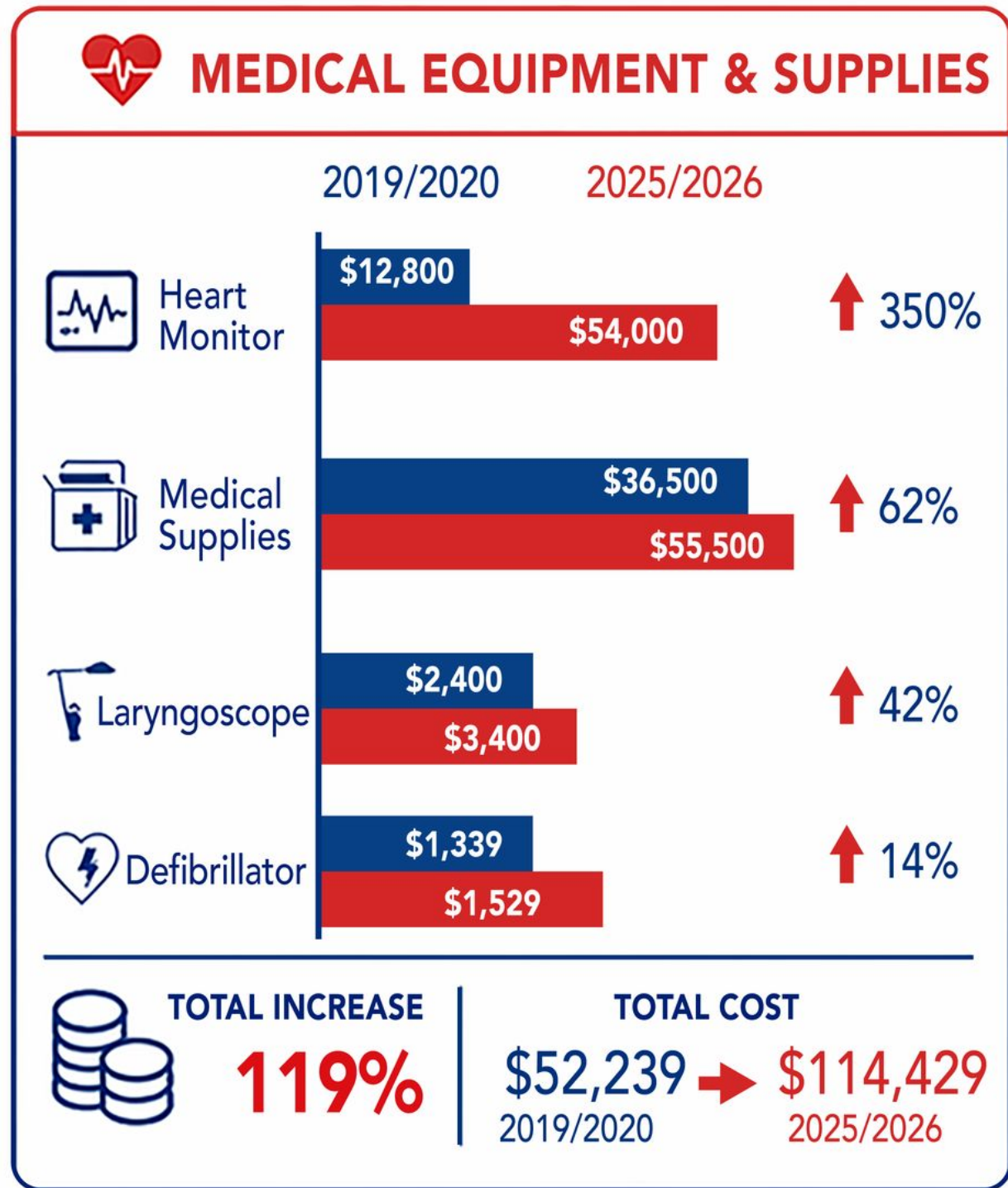
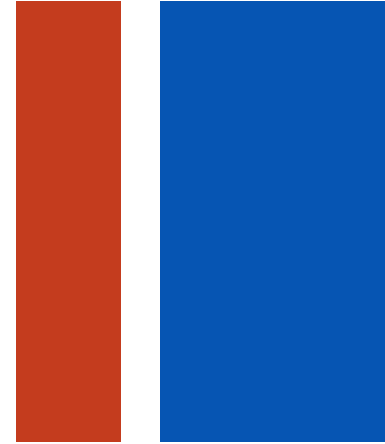
Evidence of Rising Costs



A comparison of the increased costs for emergency vehicles that reach the end of their useful life and must be replaced.



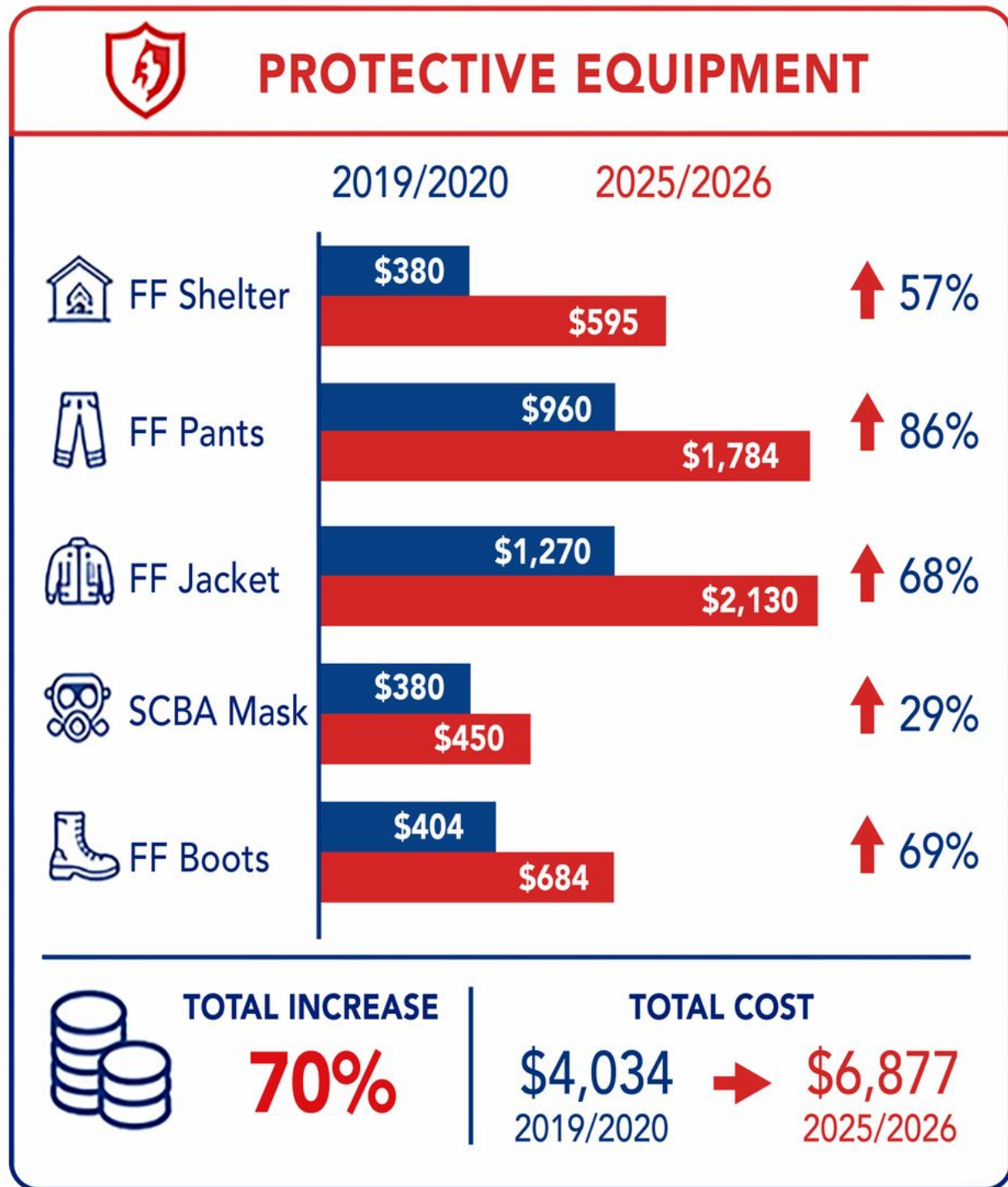
Evidence of Rising Costs



A comparison of medical equipment and supplies, many of which are used nearly every day.



Evidence of Rising Costs



A cost comparison of the protective equipment essential for our firefighters to safely and effectively do their job.





Impact

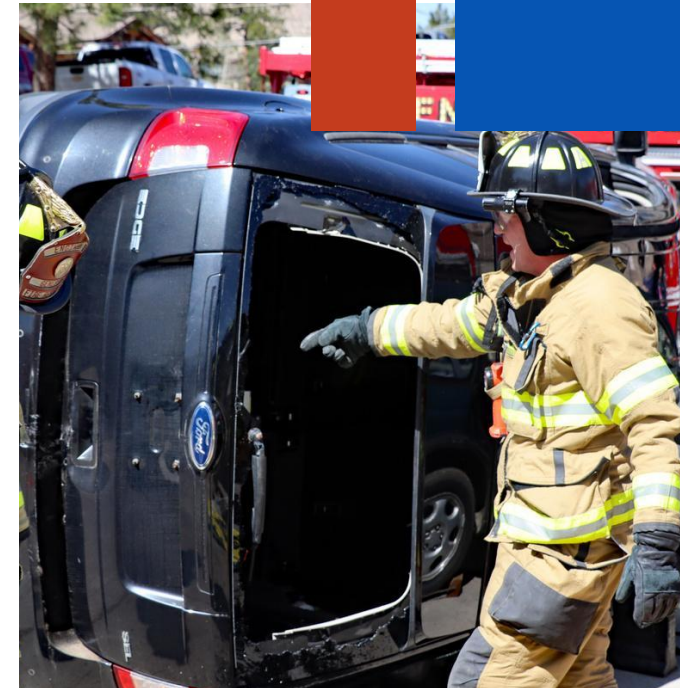
What Happens Without New Revenue?

■ Service Level

Fire and medical emergency services and response objectives will not be reached.

■ District-Wide Consequences:

Additional services across the District will be impacted.





Response Time and Service Quality

Outdated Stations

■ Sustained Facilities:

Two stations are outdated and lack the necessary work areas and appropriate living space for staff.

■ Station 1

The station near Evergreen Lake along Highway 73 was built 60 years ago.

- Repair and maintenance costs are **too expensive.**
- It will need to be rebuilt and consolidated with Station 4.

■ Station 4

Built in 1984, contains only two sleeping rooms and has no space available for firefighters or fire trucks.

- **Consolidating with Station 1** would **replicate the response model** built at Station 2 with career firefighters and paramedics in one living/working space.



A Potential Path Forward: Financial Track Record

■ Fiscal Responsibility

Evergreen Fire/Rescue has a **strong history of efficiently managing taxpayer dollars.**

■ History with Voters

Voters have not been asked for a mill levy increase since 2016, and have **never been asked to approve a sales tax.**

■ The Sales Tax Option

Recent state legislation ([SB24-194](#)) now allows fire districts to use sales tax to raise additional revenues.



Funding Priorities

How Potential Revenue Would Be Used

■ Estimated Revenue

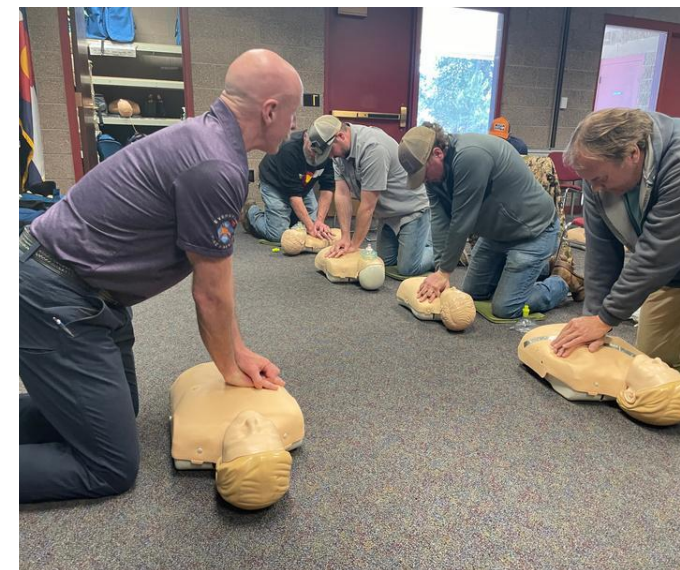
A sales tax of **0.89%** on goods purchased is estimated to raise **\$5.44 million annually**.

Exemptions would apply to groceries, prescription medications, diapers, school activities, and all other categories exempt under state sales tax law.

■ Key Areas of Investment

This funding would help maintain high-level services by supporting:

- **Paid firefighter and paramedic staff**
- **Volunteer recruitment**
- **Protection and Wildfire mitigation**
- **Community education**
- **Emergency response capability**





Call to Action

Next Steps

■ Community Input Requested

No final decisions have been made regarding a revenue proposal, the Board may decide that in August.

■ Get Involved

Your input is important as Evergreen Fire Protection District weighs its options.

■ Learn More & Provide Feedback

Submit feedback at: www.efr4you.com



LEARN MORE:

