

Nordic  
Elite

# Birch & Alder log requirements

Technical requirements for birch and alder logs used  
in Nordic Elite veneer production.

**Log deliveries must be agreed in advance**

+371 27855850

## Delivery Conditions and Quality Requirements

To ensure efficient cooperation, all log deliveries must comply with Nordic Elite quality requirements and be accompanied by the necessary documentation. We value reliable suppliers who ensure consistent quality, and in return we offer fair and transparent cooperation.

1

**Non-conforming assortments**  
1 EUR.



**Required documentation  
at delivery**



**Apakokus  
no biotopiem nepieņem.**



Suppliers who do not deliver FSC® certified timber must, before harvesting and delivery, verify the felling permit in the Nature Data Management System database "Ozols" (<https://ozols.gov.lv/pub>). If the database indicates "Biologically valuable areas" for a specific site, logs from such areas will not be accepted.

### Delivery Documentation

Each shipment must include a copy of the felling permit or an equivalent document confirming the ownership and origin of the timber, if the supplier is not FSC or PEFC certified and/or does not supply certified timber assortments, as well as a transport document (delivery note/invoice).

**Bonus for certified (FSC 100%) veneer logs: +5 EUR/m<sup>3</sup>**

# Log Requirements

## 1 Log Length

### Birch

- 2.8 m (2.7 m + 0.1 m)
- 3.4 m (3.3 m + 0.1 m) – on request

### Alder

- 2.8 m (2.7 m + 0.1 m)
- 3.4 m (3.3 m + 0.1 m) – on request

## 2 Log Diameter

### Birch

- **A/B grade:** 18 – 45 cm
- **C/D grade:** 16/18 – 45 cm
- **Tara:** 14/15 – 45 cm

### Alder

- **A/B grade:** 16 – 45 cm



Each load is measured and evaluated individually.

## 3 Knots and Shoots

### Birch

- **Rotten or dead knots:** not allowed
- **Healthy knots:** up to 3 per log
- **Shoots:** max. 3 per log

## 4 Shape & Curvature



**Side surface**  
Maximum deviation on side surface: 5 cm



**End surface**  
**Maksimālais garums:**  
Up to 50% of the diameter



**Ring cracks**  
not allowed

## 5 Curvature

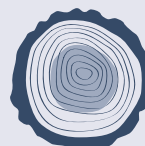
- **Longitudinal curvature:** max. 3% deviation
- **Multi-directional curvature:** not allowed

## 6 Defects in Peeling Zone

**Allowed only outside the peeling cylinder:**

- Cracks caused during felling or cutting
- Surface roughness
- ⊗ **Defects in the peeling zone are not allowed**

## 7 Core



Allowed up to 30% of diameter

## 8 Moisture and Biological Damage

- **Dry rot:** not allowed
- **Fungal damage:** not allowed
- **Decay:** not allowed
- **Mechanical damage:** not allowed



**Reliable and timely payments**



**Stable demand throughout the year**



**Fair and transparent measurement**



**Simple and efficient delivery and cooperation process**

