



The superior  
choice in  
imaging



TAU 20|20

 | ORTHOSCAN

# ANATOMY REVEALED



## LIVE IMAGE SIZE





14.5" x 14.5" live image to see fine details of anatomy with vivid clarity.

## 32" 4K MONITOR

With the largest screen on a mini, experience optimal eye comfort on a hi-bright, 3840 x 2160 resolution monitor.

## ORTHOTOUCH™

Advanced touchscreen interface.

-  Color interface
-  Anatomical selections
-  Pediatric software
-  Touch support

## MONITOR ARM

Allows for easy adjustment of monitor and keyboard for viewing of anatomy while sitting or standing.

## ON-SCREEN HELP

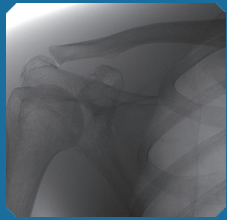
Description of common system functions available directly on-screen.



## Intelligent Dose Reduction

*Do more. Dose less.*

At Orthoscan, we understand your concern about radiation exposure and the demand for high-quality images. That's why the TAU family includes cutting-edge Intelligent Dose Reduction technology that provides the best in diagnostic image quality while reducing exposure to you and your patients.



Shoulder Imaging



Foot Imaging



Knee Imaging

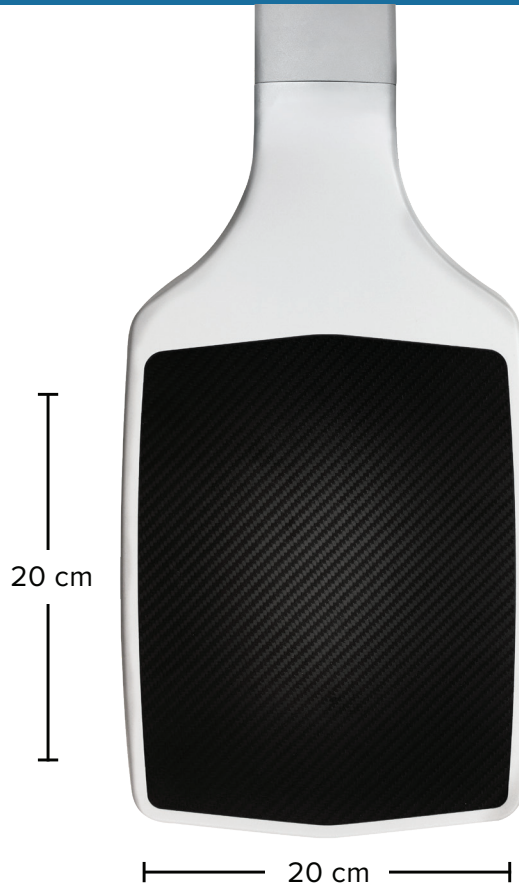


Elbow Imaging



Hand Imaging

# IMAGING, EVOLVED



### Detector Size

#### Bigger detector. Bigger possibilities.

With the largest detector available on a mini C-arm, Orthoscan TAU 2020 blurs the line between mini and full size. Confirm joint space with accuracy, see fractures in full view, and save dose by minimizing shots so you can work efficiently. Combined with pediatric indication, image anatomy in ways never before possible on a mini C-arm.

### Stepless (Motorized) Collimator

#### Seamless collimation for the perfect shot

Introducing the industry's first stepless motorized collimator in a mini C-arm. With a touch of a finger, users can infinitely adjust via the touchscreen interface to minimize radiation exposure and reduce patient dose, while limiting the area of interest. Improved contrast and detail-rich images provide users a clear image for an accurate diagnosis.



#### PEDIATRIC INDICATION

Designed for use with pediatric patients



#### SURGICAL LED LIGHTS

Provides additional illumination on the anatomy



#### KEEPING IT MINI

Light weight and compact design simplifies transportation and storage



#### FLEXIBILITY

Increased orbital rotation of 160°, larger arc depth of 20", and improved umbilical cable



#### PULSED FLUOROSCOPY

- Selectable pulse rates of 30, 15, 7.5, and 2 pulses per second
- Dose reduction without loss of image quality



#### OPTIMIZED DOSE FILTER

- First mini C-arm with pediatric indication
- Reduced dose while maintaining image quality
- Reduced exposure to surgeons and patients



#### NEXT GENERATION FLAT PANEL DETECTOR

- Increased workflow and efficiency
- Improved image brightness and quality
- Dose reduction and decreased ramp time



# Up to 86%

Cumulative Dose Reduction can be achieved\*

# ADDITIONAL FEATURES



TAU 2020



## ENHANCED SECURITY

Keep your equipment and data safe in the modern healthcare environment.

## INTEGRATED CABLE PUSHERS

Protects power cords and other cables from being damaged.

## USER-FRIENDLY CONNECTIVITY

Easy access to the power button and I/O ports directly on top of the chassis.

## UPGRADED SERVICEABILITY

Redesigned from the inside out to reduce service maintenance time.

## THREE-WAY BRAKE CONTROL

Maneuver your system with ease down hallways, around corners, and in the operating room.

## IMPROVED BILATERAL CONTROLS

New back-lit controls are easier to see with additional buttons for upgraded functionality in the sterile field.

### MONITOR

|                      |               |
|----------------------|---------------|
| Display size         | 32" 4K LCD    |
| Primary "live" image | 14.5" x 14.5" |
| Dual reference image | 7" x 7"       |
| HDMI                 | ✓             |

### DETECTOR

|               |                     |
|---------------|---------------------|
| Type          | Flat Panel Detector |
| Detector size | 20 cm x 20 cm       |
| Pixel spacing | 100 Microns         |

### X-RAY GENERATOR

|                       |                           |
|-----------------------|---------------------------|
| kV range              | 40 - 78 kV                |
| mA range              | 0.040 - 0.160 mA          |
| Selectable pulse rate | Cont., 30, 15, 7.5, 2 pps |
| Pediatric indication  | ✓                         |

### ELECTRICAL

|                                    |           |
|------------------------------------|-----------|
| Sterile field controls             | Bilateral |
| Multifunction wireless foot switch | ✓         |
| Laser alignment                    | ✓         |

### DOCUMENTATION

|                        |          |
|------------------------|----------|
| Wireless communication | Optional |
| Image capacity         | 108,000  |
| Video capacity         | 60 min   |

### MECHANICAL

|                   |           |
|-------------------|-----------|
| Weight            | 475 lb    |
| Height            | 48"       |
| Footprint (W x L) | 29" x 33" |

 | ORTHOSCAN |  [www.orthoscan.com](http://www.orthoscan.com) |  480.503.8010 |  480.503.8011 |  14555 N 82<sup>nd</sup> St. Scottsdale, AZ 85260

© 2025 Orthoscan, a division of Ziehm-Orthoscan, Inc. All rights reserved. Orthoscan and Orthotouch™ are registered trademarks of Ziehm-Orthoscan, Inc. Product features and specifications are subject to change without notice. \* Using Intelligent Dose Reduction (with Optimized Dose Filter) when compared to Orthoscan 1000-0004-FD. In clinical practice, the use of IDR may reduce patient dose depending on the clinical task, patient size, anatomical location, and clinical practice. A consultation with a radiologist and a physicist should be made to determine the appropriate dose to obtain diagnostic image quality for the particular clinical task. 110-2220, Rev D, 09/2025

