

Upgrade your expectations



TAU 15 | 15

 | ORTHOSCAN

ANATOMY REVEALED



LIVE IMAGE SIZE

Expect exceptional diagnostic imagery with a 12" x 12" live image to see fine details of anatomy with vivid clarity.

27" MONITOR

See more on-screen content with a resolution of 1920 x 1080 in bright detail for an immersive imaging experience.

ORTHOTOUCH™

Advanced touchscreen interface.



Color interface



Anatomical selections



Pediatric software



Touch support

MONITOR ARM

Allows for easy adjustment of monitor and keyboard for viewing of anatomy while sitting or standing.

ON-SCREEN HELP

Description of common system functions available directly on-screen.



Intelligent Dose Reduction

Do more. Dose less.

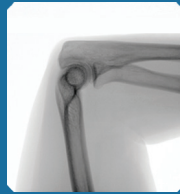
At Orthoscan, we understand your concern about radiation exposure and the demand for high-quality images. That's why the TAU family includes cutting-edge Intelligent Dose Reduction technology that provides the best in diagnostic image quality while reducing exposure to you and your patients.



Hand Imaging



Foot Imaging



Elbow Imaging



Knee Imaging



Shoulder Imaging

IMAGING, EVOLVED



Detector Size

Capture more anatomy in one shot

The Orthoscan TAU 1515, with its 15 cm x 15 cm detector, provides a larger imaging surface, enabling you to focus on the patient rather than the equipment. This expansive panel captures preferred views in fewer shots, streamlining your workflow and minimizing radiation exposure for both you and your patients.

Flexibility

A mini C-arm that works with you, not against you

With an increased orbital rotation of 160°, a larger arc depth of 20", and an integrated umbilical cable; Orthoscan TAU 1515 combines high versatility with increased articulation. Improve your work flow and efficiency with minimal adjustments, allowing you to effortlessly maneuver in the surgical field with just a turn of the wrist.



PEDIATRIC INDICATION

Designed for use with pediatric patients



SURGICAL LED LIGHTS

Provides additional illumination on the anatomy



KEEPING IT MINI

Light weight and compact design simplifies transportation and storage



CONNECTIVITY

Easily access the power button & I/O ports directly on top of the chassis



PULSED FLUOROSCOPY

- Selectable pulse rates of 30, 15, 7.5, and 2 pulses per second
- Dose reduction without loss of image quality



OPTIMIZED DOSE FILTER

- First mini C-arm with pediatric indication
- Reduced dose while maintaining image quality
- Reduced exposure to surgeons and patients



NEXT GENERATION FLAT PANEL DETECTOR

- Increased workflow and efficiency
- Improved image brightness and quality
- Dose reduction and decreased ramp time



Up to

79%

Cumulative Dose Reduction can be achieved[†]

ADDITIONAL FEATURES



TAU 15.15



UPGRADED SERVICEABILITY

Redesigned from the inside out to reduce service maintenance time.

ENHANCED SECURITY

Keep your equipment and data safe in the modern healthcare environment.

INTEGRATED CABLE PUSHERS

Protects power cords and other cables from being damaged.

THREE-WAY BRAKE CONTROL

Maneuver your system with ease down hallways, around corners, and in the operating room.

IMPROVED BILATERAL CONTROLS

New back-lit controls are easier to see with additional buttons for upgraded functionality in the sterile field.

MONITOR	
Display size	27" LCD
Primary "live" image	12" x 12"
Dual reference image	6" x 6"
HDMI	✓

DETECTOR	
Type	Flat Panel Detector
Detector size	15 cm x 15 cm
Pixel spacing	100 Microns

X-RAY GENERATOR	
kV range	40 - 78 kV
mA range	0.040 - 0.160 mA
Selectable pulse rate	30, 15, 7.5, 2 pps
Pediatric indication	✓

ELECTRICAL	
Sterile field controls	Bilateral
Multifunction wireless foot switch	✓
Laser alignment	✓

DOCUMENTATION	
Wireless communication	Optional
Image capacity	108,000
Video capacity	60 min

MECHANICAL	
Weight	475 lb
Height	48"
Footprint (W x L)	29" x 33"