

Exceptional imaging  
begins here



TAU 15 | 12

 | ORTHOSCAN

# ANATOMY REVEALED



## LIVE IMAGE SIZE





Expect exceptional diagnostic imagery with a 10" x 8" live image to see fine details of anatomy with vivid clarity.

## MONITOR ARM

Allows for easy adjustment of monitor and sitting or standing.

## ORTHOTOUCH™

Advanced touchscreen interface.

-  Color interface
-  Anatomical selections
-  Pediatric software
-  Touch support

## 24" MONITOR

See more on-screen content with a resolution of 1920 x 1080 in bright detail for an immersive imaging experience.

## ON-SCREEN HELP

Description of common system functions available directly on-screen.



## Intelligent Dose Reduction

### *Do more. Dose less.*

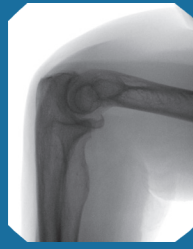
At Orthoscan, we understand your concern about radiation exposure and the demand for high-quality images. That's why the TAU family includes cutting-edge Intelligent Dose Reduction technology that provides the best in diagnostic image quality while reducing exposure to you and your patients.



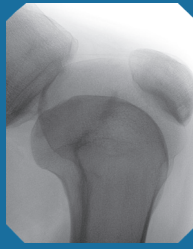
Hand Imaging



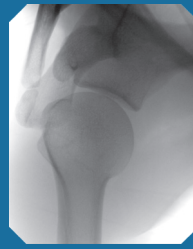
Foot Imaging



Elbow Imaging



Knee Imaging



Shoulder Imaging

# IMAGING, EVOLVED



## Over-rotation

### A mini C-arm that works with you, not against you

An expanded orbital rotation of 160° allows preferred views of anatomy to be obtained without patient discomfort. Whether you're imaging children or adults, a 20" arc depth provides the necessary space to position patients of all sizes. Get all the flexibility you need with an improved umbilical cable, allowing you to easily maneuver the C-arm in the surgical field. Combined, these features simplify and improve your workflow.

## Size and storage

### Big capability, small size

Lighter and smaller than competitive equipment, Orthoscan's TAU family is keeping the mini C-arm mini. While in compact mode, storage and maneuvering through restrictive spaces is effortless and a 3-way braking system provides mobility and stability during positioning.



## PEDIATRIC INDICATION

Designed for use with pediatric patients



## SURGICAL LED LIGHTS

Provides additional illumination on the anatomy



## BILATERAL CONTROLS

Improved functionality for the sterile field with back-lit controls



## ENHANCED SECURITY

Work confidently with protected data in the modern healthcare environment



## OPTIMIZED DOSE FILTER

- First mini C-arm with pediatric indication
- Reduced dose while maintaining image quality
- Reduced exposure to surgeons and patients



## NEXT GENERATION FLAT PANEL DETECTOR

- Increased workflow and efficiency
- Improved image brightness and quality
- Dose reduction and decreased ramp time
- Mag Mode maintains image quality without dose increase



Up to  
**66%**

Cumulative Dose Reduction can be achieved\*

# ADDITIONAL FEATURES



## USER-FRIENDLY CONNECTIVITY

Easy access to the power button and I/O ports directly on top of the chassis.

## UPGRADED SERVICEABILITY

Redesigned from the inside out to reduce service maintenance time.

## THREE-WAY BRAKE CONTROL

Maneuver your system with ease down hallways, around corners, and in the operating room.

## INTEGRATED CABLE PUSHERS

Protects power cords and other cables from being damaged.

## KEEPING IT MINI

A lightweight frame in addition to compact design simplifies storage and transportation in restrictive hallways or rooms.

### MONITOR

Display size	24" LCD
Primary "live" image	10" x 8"
Dual reference image	6" x 4"
HDMI	✓

### DETECTOR

Type	Flat Panel Detector
Detector size	15 cm x 12 cm
Pixel spacing	100 Microns

### X-RAY GENERATOR

kV range	40 - 78 kV
mA range	0.040 - 0.160 mA
Selectable pulse rate	N/A
Pediatric indication	✓

### ELECTRICAL

Sterile field controls	Bilateral
Multifunction wireless foot switch	✓
Laser alignment	✓

### DOCUMENTATION

Wireless communication	Optional
Image capacity	108,000
Video capacity	60 min

### MECHANICAL

Weight	475 lb
Height	48"
Footprint (W x L)	29" x 33"