



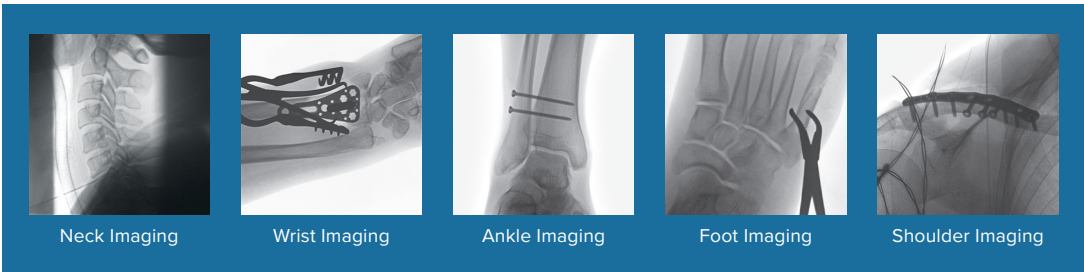
Versatile design
meets latest
flat-panel
technology



Ziehm Solo **FD**



FREEDOM TO IMAGE YOUR WAY



SmartDose

Best image quality. Minimized dose.

This comprehensive concept consists of a broad, clinically proven application portfolio to address the daily challenges of low dose and high image quality. With significant dose savings, Ziehm Imaging sets the benchmark in user-friendly adjustment of dose exposure¹.

See below for the full list of applications and what they can do.

The future of efficiency

Latest flat-panel technology

Image quality and efficiency are the most important but also challenging factors in daily clinical routine. In comparison with conventional C-arms, the latest flat-panel technology achieves higher spatial resolution due to smaller pixel sizes combined with lower noise levels and a higher read-out speed at full resolution. True resolution, especially in the magnification modes, makes interpolation unnecessary, and therefore enables improved overall efficiency.



**LASER
POSITIONING
DEVICE**

Integrated in flat-panel and generator housing for accurate & dose-free positioning of C-arm



PREMAG

For exposure-free magnification of X-ray images



**REDUCTION
OF PULSE
FREQUENCY**

Manually or fully automatically to lower the accumulated dose



**VIRTUAL
COLLIMATORS**

For exposure-free positioning of collimators



**ANATOMICAL
PROGRAMS**

With automatic optimization of dose and image quality for best results



**LOW DOSE
MODE**

In all anatomical programs for particularly dose-sensitive procedures, e.g. in pediatrics²



Advanced clinical workflow

Work smarter. Not harder.

Take advantage of 165° orbital movement for easier patient coverage. Increase safety as the wireless footswitch reduces the amount of cables on the OR floor. Ensure easy and unmistakable communication thanks to color-coded handles. In the face of time and efficiency pressure, compatible clinical workflows help to operate the C-arm in an easy and intuitive way. The Solo Center is a touchscreen with a modular software architecture, ensuring maximum flexibility. Store images wirelessly to the PACS from any location. With the Ziehm Wireless Video option, live images can be transferred to wall or ceiling mounted monitors in real-time.

All-in-one design

The ultimate space saver

As the size of hospital and surgery center ORs decreases and equipment quantity rises, the demand for imaging systems with smaller footprints is growing. With its all-in-one design, the Ziehm Solo FD is one of the most compact C-arms for even the smallest treatment scenarios on the market – now equipped with the latest flat-panel technology to perform a broad portfolio of applications.



APPLICATIONS

Orthopedics, Trauma, Pain Management & more with the latest flat panel technology



AFFORDABILITY

Lowest entry & ownership cost of any full size flat-panel detector system on the market



FLEXIBILITY

165° of orbital movement & 34" of free space for easier patient coverage



MAGNIFICATION MODE

Zero dose increase while retaining image quality



OBJECT DETECTED DOSE CONTROL
(ODDC)

To automatically analyze the area of interest & minimize dose while optimizing image quality



HIGH-SPEED ADR
INTELLIGENT PULSED REGULATION

For intelligent, fast regulation of pulse rate to lower the dose level



REMOVABLE GRID

To reduce dose in pediatric & other dose-sensitive procedures



BEAM FILTRATION[®]

For reduced skin entrance dose without compromising on image quality



ZAP
ADVANCED INSIGHTS IN FAST-MOVING OBJECTS

To display fast-moving objects like guide wires & even the smallest vessels in razor-sharp image quality



AUTOMATIC ADJUSTMENT

For large patients — with no additional increase in dose

ADDITIONAL FEATURES



Ziehm Solo FD



Product Support

Nationwide service coverage

Nationwide service coverage is available with 24/7 phone support from our service team. Our service programs cover the lifespan of our mobile C-arms, ranging from periodic maintenance to complete coverage programs. You can depend on us for flexible, fast, and reliable service.

- ✓ Toll-free service
- ✓ Comprehensive service programs
- ✓ 24/7 support



Call: 866.949.4346

MONITOR

Display size	27" Split Screen
Ziehm viewing station	Optional

IMAGING TECHNOLOGY

Type	Flat Panel
Detector size	21 cm x 21 cm / 31 cm x 31 cm

X-RAY GENERATOR

Pulsed fluoroscopy kV range	40 - 120 kV
mA range	0.2 - 20 mA
Pulse rates	25, 12.5, 8, 4, 2, 1 pps

ELECTRICAL

Power supply	100-240 VAC (± 10%), 50/60 Hz
--------------	-------------------------------

IMAGE PROCESSING

Image capacity	100,000
Wireless communication	Optional
Multifunction wireless footswitch	Optional
Printer	Optional

DIMENSIONS

Weight	765 lb - 787 lb (± 6%)
Height	69" - 85"
Width	31.5"
Length	67" - 76"

Orthoscan has partnered with Ziehm Imaging to distribute the Ziehm Solo FD



www.orthoscan.com |
  480.503.8010 |
  480.503.8011 |
  14555 N 82nd St. Scottsdale, AZ 85260

© 2025 Ziehm Imaging and Orthoscan are divisions of Ziehm-Orthoscan, Inc. All Rights Reserved. Ziehm Imaging is constantly improving its products and reserves the right to change these specifications without notice.
¹ In clinical practice, the use of SmartDose may reduce patient dose depending on the clinical task, patient size, anatomical location, and clinical practice. A consultation with a radiologist and a physicist should be made to determine the appropriate dose to obtain diagnostic image quality for the particular clinical task. ² Gosch D, et al. "Influence of grid and ODDC on radiation exposure and image quality using mobile C-arms – First results," RöFo, 09/07 ³ The technology Beam Filtration reduces dose exposure for Ziehm Imaging flat-detector systems in comparison with conventional filtration techniques. Data on File. Results may vary. 110-0241 Rev D, 09/2025

