

# Calala BESS Final layout

## Plan 1

### Legend

- Development extent
- Existing electricity substation
- Existing substation
- Site boundary
- Property parcel

### Existing transmission line by voltage

- 132 (kV)
- 330 (kV)

### Battery stage

- 250 MW
- 50 MW

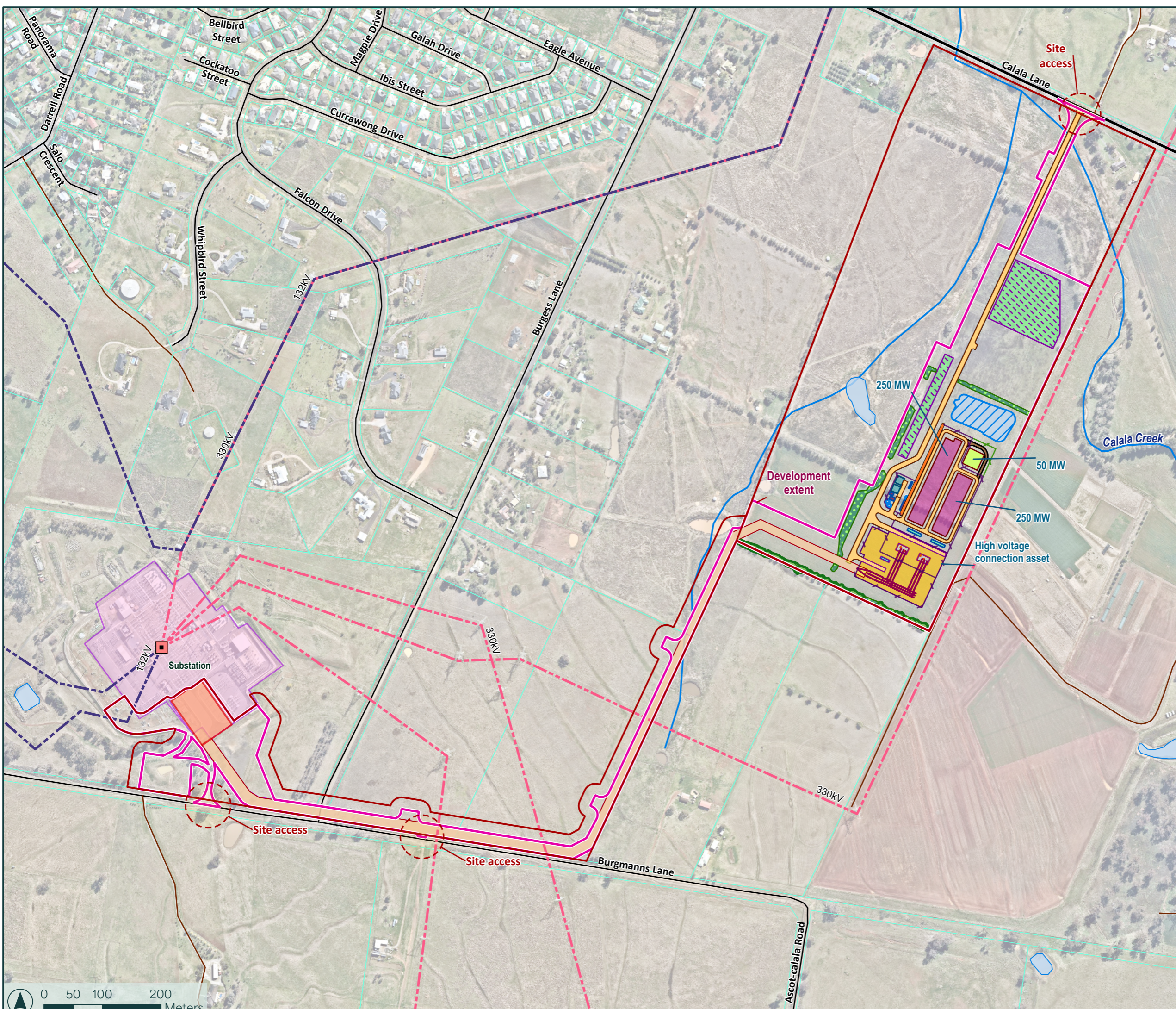
### Final layout

- High voltage bus
- Noise wall
- Fence - 250 MW
- Fence - 50 MW
- Access track
- Fire water tank
- Grassed landscape mound
- High voltage connection asset and ancillary infrastructure
- High voltage transformer
- O&M and facility control room
- Stormwater basin
- Switch room & control room
- Transmission line easement
- Warehouse
- Access track - 50 MW
- Transmission line corridor
- Indicative TransGrid substation augmentation area
- Landscape planting
- Retained tree line

### Reference items

Approval: SSD 52786213 - Modification  
 Equis: DA3\_CAL\_10003\_00451\_01  
 Aconex Source: CAL/00/P/00-GN/NAT/0001 R2  
 Export date: 10/06/2026  
 Scale: 1:6,000 @ A3  
 Spatial Reference: GDA2020 MGA Zone 56

Disclaimer: This plan is indicative for development approval only and subject to detailed design changes. It contains highly confidential and proprietary information that are of independent, economic value to GreenPoint Energy. This drawing and design shall not be reproduced, amended, disclosed or distributed to others without the express written consent of GreenPoint Energy.



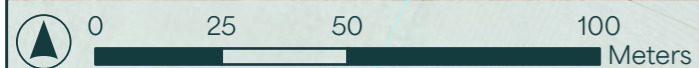
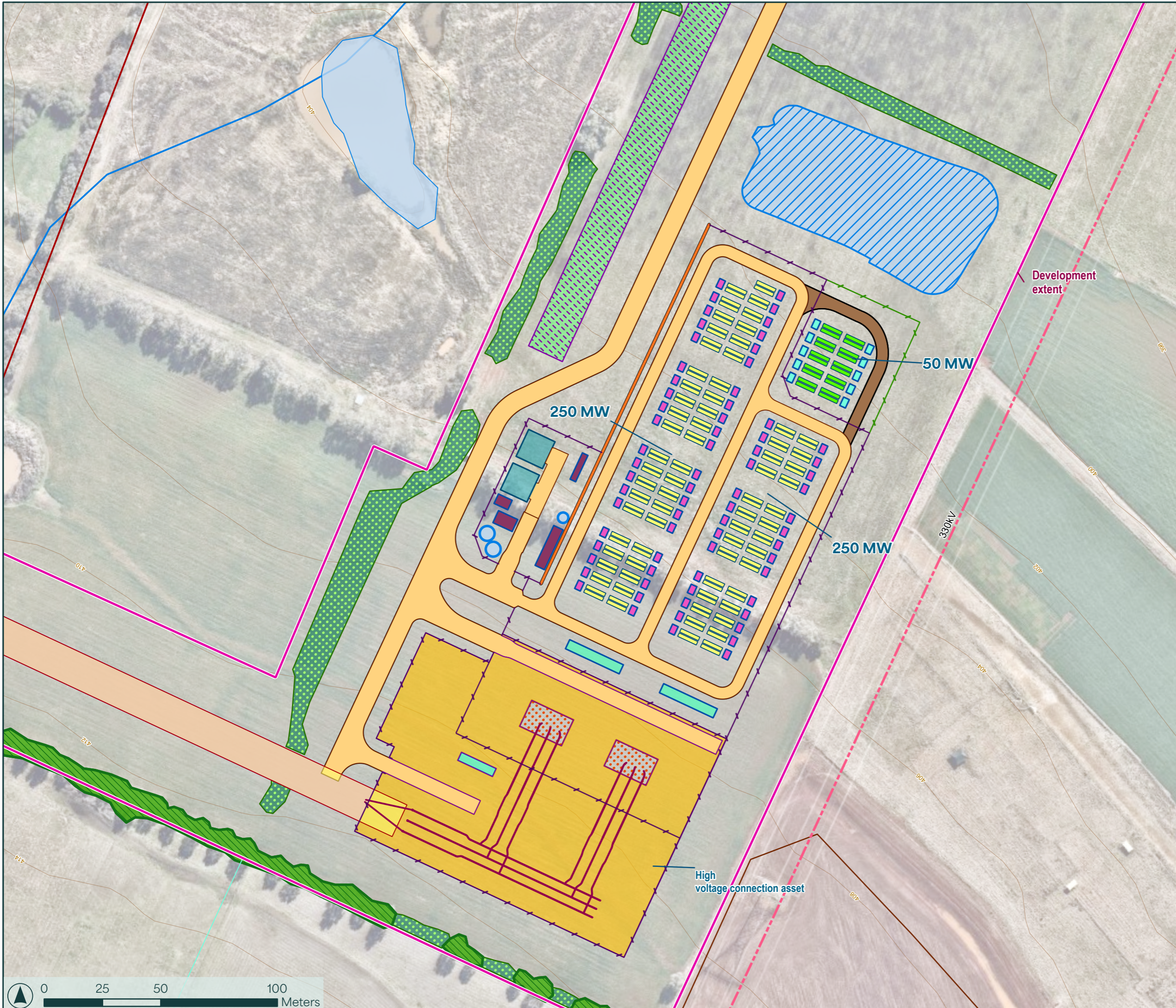
# Calala BESS

## Final BESS layout

### Plan 2

#### Legend

- Development extent
  - Site boundary
  - Property parcel
- Existing transmission line**
- Voltage (kV)**
- 330
- Final layout**
- Fence - 250 MW
  - Fence - 50 MW
  - High voltage bus
  - Noise wall
  - Access track
  - Battery enclosure
  - Fire water tank
  - Grassed landscape mound
  - High voltage connection asset asset and ancillary infrastructure
  - High voltage transformer
  - Medium voltage transformer
  - O&M and facility control room
  - Stormwater basin
  - Switch room & control room
  - Transmission line easement
  - Warehouse
  - Retained tree line
  - Landscape planting
  - Transmission line corridor
  - Access track - 50 MW
  - Battery enclosure - 50 MW
  - Medium voltage transformer - 50 MW



**Reference items**  
**Approval:** SSD 52786213 - Modification  
**Equis:** DA3\_CAL\_10003\_00452\_01  
**Aconex Source:** CAL/00/P/00-GN/NAT/0001 R2  
**Export date:** 10/06/2026  
**Scale:** 1:1,500 @ A3  
**Spatial Reference:** GDA2020 MGA Zone 56

Disclaimer: This plan is indicative for development approval only and subject to detailed design changes. It contains highly confidential and proprietary information that are of independent, economic value to GreenPoint Energy. This drawing and design shall not be reproduced, amended, disclosed or distributed to others without the express written consent of GreenPoint Energy.

Acknowledgements - Basemap layers: Commonwealth and state governments of Australia. Esri imagery