

Calala BESS

Final BESS layout - comparison

Plan 3

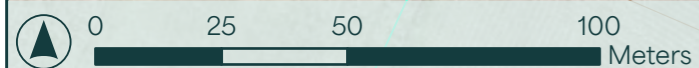
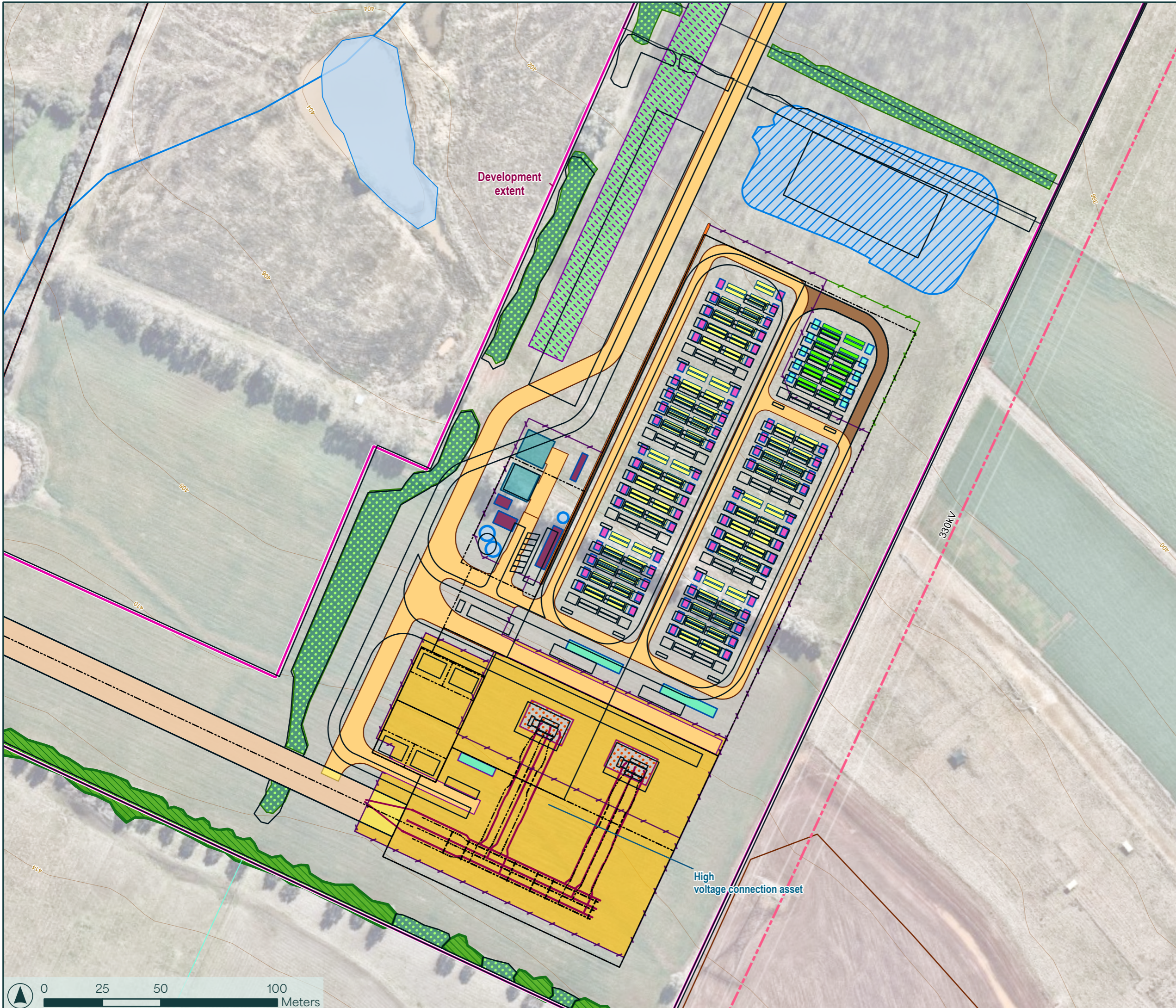
Legend

- Development extent
 - Site boundary
 - Property parcel
- Existing transmission line by voltage**
- 330 kV
- Approved layout**
- Line features - approved layout
 - Polygon features - approved layout
- Final layout**
- Fence - 250 MW
 - Fence - 50 MW
 - High voltage bus
 - Noise wall
 - Access track
 - Battery enclosure
 - Fire water tank
 - Grassed landscape mound
 - High voltage connection asset asset and ancillary infrastructure
 - High voltage transformer
 - Medium voltage transformer
 - O&M and facility control room
 - Stormwater basin
 - Switch room & control room
 - Transmission line easement
 - Warehouse
 - Retained tree line
 - Landscape planting
 - Transmission line corridor
 - Access track - 50 MW
 - Battery enclosure - 50 MW
 - Medium voltage transformer - 50 MW

Reference items
Approval: SSD 52786213 - Modification
Equis: DA3_CAL_10003_00454_01
Aconex Source: CAL/00/P/00-GN/NAT/0001 R2
Export date: 10/06/2026

Scale: 1:1,500 @ A3
Spatial Reference: GDA2020 MGA Zone 56

Disclaimer: This plan is indicative for development approval only and subject to detailed design changes. It contains highly confidential and proprietary information that are of independent, economic value to GreenPoint Energy. This drawing and design shall not be reproduced, amended, disclosed or distributed to others without the express written consent of GreenPoint Energy.



Calala BESS

Final layout - comparison

Plan 4

Legend

- Development extent
- Existing electricity substation
- Feature type**
- Existing substation
- Site boundary
- Property parcel
- Existing transmission line by voltage**
- 132 kV
- 330 kV
- Battery stage**
- 250 MW
- 50 MW
- Approved layout**
- Line features - approved layout
- Polygon features - approved layout
- Final layout**
- Fence - 250 MW
- Fence - 50 MW
- High voltage bus
- Noise wall
- Access track
- Fire water tank
- Grassed landscape mound
- High voltage connection asset and ancillary infrastructure
- High voltage transformer
- O&M and facility control room
- Stormwater basin
- Switch room & control room
- Transmission line easement
- Warehouse
- Access track - 50 MW
- Transmission line corridor
- Indicative TransGrid substation augmentation area
- Landscape planting
- Retained tree line

Reference items
Approval: SSD 52786213 - Modification
Equis: DA3_CAL_10003_00453_01
Aconex Source: CAL/00/P/00-GN/NAT/0001 R2
Export date: 10/06/2026
Scale: 1:6,000 @ A3
Spatial Reference: GDA2020 MGA Zone 56

Disclaimer: This plan is indicative for development approval only and subject to detailed design changes. It contains highly confidential and proprietary information that are of independent, economic value to GreenPoint Energy. This drawing and design shall not be reproduced, amended, disclosed or distributed to others without the express written consent of GreenPoint Energy.

