

HCLTech Accelerate for Manufacturing

Deploy Microsoft Dynamics 365 Finance & Supply Chain Management in less than 5 months



HCLTech Accelerate for Manufacturing

Manufacturing organizations continue to face critical challenges in deploying and scaling software solutions that support digital transformation. Legacy systems and manual data-entry hinder real-time decision making while lack of integration between IT and OT systems results in fragmented data silos and limited visibility across organizations. Despite the availability of unified platforms like Microsoft Dynamics 365, many organizations report delayed ROI and underutilized digital capabilities.

At HCLTech we don't just deploy software, we build solutions to problems. HCLTech Accelerate for Manufacturing is our pre-built solution designed to get manufacturing organizations like yours, live on the core manufacturing system within Microsoft Dynamics 365 Finance & Supply Chain Management in just 5 months.



How Does it Work?

- HCLTech Accelerate for Manufacturing is a prebuilt solution with supporting business processes and documentation for rapid deployment of the core manufacturing system within Dynamics 365 Finance and Supply Chain Management.
- Its standardised best-practice configuration aligns tightly to the needs of the modern Manufacturing department, regardless of industry or organization size.
- HCLTech Accelerate for Manufacturing allows businesses to transform finance followed by supply chain transformation.
- We enable customers to leverage our prebuilt business processes, user personas, dashboards DevOps templates.

HCLTech's Accelerator reduces the timeline for full deployment of Dynamics 365 Manufacturing from eight months to less than five months.

Can my business truly get from 'Go Ahead' to 'Go Live' in just 18 weeks?

Absolutely, you can. But you don't have to take our word for it - here's a visual timeline of a typical deployment done with Accelerate for Manufacturing:



Together, HCLTech's proven process for Dynamics 365 implementations and our lightning-fast Manufacturing Accelerator enable a seamlessly speedy deployment.

In-Scope Manufacturing Functions

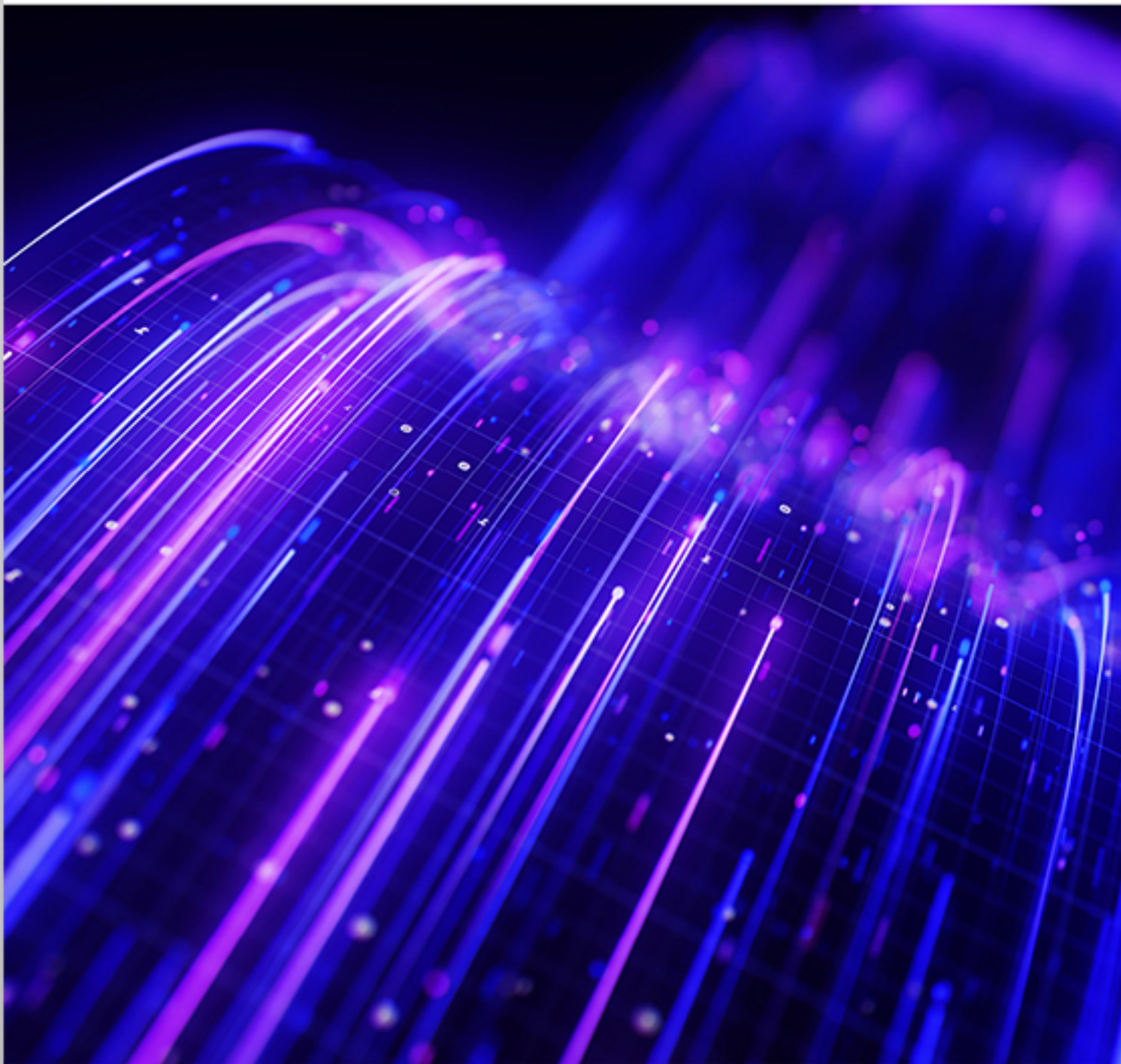
MRP	Production Orders	Manufacturing Execution
Shop Floor Data Capture	Bill of Materials	Routing
Inventory	Warehousing	Cost Control
Quality Management	Product Lifecycle Management	Versions
D365 Supply Chain Co Pilot	Power BI embedded reporting	Subcontracted Work
	Visual Planning	

HCLTech Accelerate for Manufacturing can be implemented as a standalone manufacturing solution on top of Dynamics 365 Finance with all the In-scope functions listed above.

Alternatively, if your organization's objective is to establish a fully functional foundation for an expanded solution that eventually spans your entire business, Accelerate for Manufacturing's in-scope components are precisely what you need to build that strong base.

HCLTech **Accelerate** for **Manufacturing**

Deploy Microsoft Dynamics 365 Finance
& Supply Chain Management in less than
5 months



Why Choose HCLTech?

HCLTech are a one of the largest and most successful CRM and ERP partners in the Microsoft ecosystem, our award-winning holistic approach is built around improving the ROI of our clients' Microsoft investment through:

- Exceptional implementation service delivery
- One of the largest support desks in the partner channel
- Commitment to providing education on the Microsoft technology stack, including product training, change management and adoption and sustainment programs
- Powerful IP, including add-on tools and extensions that leverage Power Platform as well as Dynamics 365 deployment accelerators like Accelerate for Finance and Accelerate for Manufacturing

Simply, HCLTech offers end-to-end solutions that help organizations increase productivity, streamline business processes and build better customer relationships.

Let's Get Started

Is your business considering a digital transformation with Microsoft Dynamics 365 Finance and Supply Chain Management? Our Manufacturing solution experts are ready to help. HCLTech has a proven track record for developing powerful accelerator tools for Dynamics 365 implementations – this accelerator is arguably our most robust and far-reaching tool yet, so our team is genuinely excited to demonstrate it for you.



HCLTech Accelerate for Manufacturing

Manufacturing organizations continue to face critical challenges in deploying and scaling software solutions that support digital transformation. Legacy systems and manual data-entry hinder real-time decision making while lack of integration between IT and OT systems results in fragmented data silos and limited visibility across organizations. Despite the availability of unified platforms like Microsoft Dynamics 365, many organizations report delayed ROI and underutilized digital capabilities.

At HCLTech we don't just deploy software, we build solutions to problems. HCLTech Accelerate for Manufacturing is our pre-built solution designed to get manufacturing organizations like yours, live on the core manufacturing system within Microsoft Dynamics 365 Finance & Supply Chain Management in just 5 months.



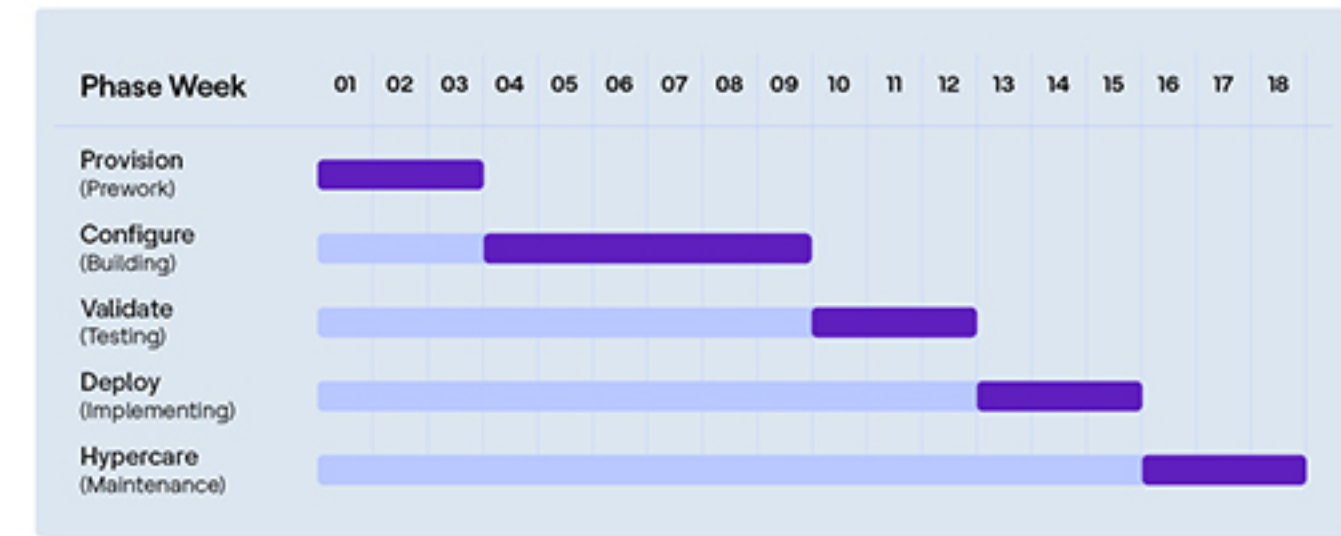
How Does it Work?

- HCLTech Accelerate for Manufacturing is a prebuilt solution with supporting business processes and documentation for rapid deployment of the core manufacturing system within Dynamics 365 Finance and Supply Chain Management.
- Its standardised best-practice configuration aligns tightly to the needs of the modern Manufacturing department, regardless of industry or organization size.
- HCLTech Accelerate for Manufacturing allows businesses to transform finance followed by supply chain transformation.
- We enable customers to leverage our prebuilt business processes, user personas, dashboards DevOps templates.

HCLTech's Accelerator reduces the timeline for full deployment of Dynamics 365 Manufacturing from eight months to less than five months.

Can my business truly get from 'Go Ahead' to 'Go Live' in just 18 weeks?

Absolutely, you can. But you don't have to take our word for it – here's a visual timeline of a typical deployment done with Accelerate for Manufacturing:



Together, HCLTech's proven process for Dynamics 365 implementations and our lightning-fast Manufacturing Accelerator enable a seamlessly speedy deployment.

In-Scope Manufacturing Functions

MRP	Production Orders	Manufacturing Execution
Shop Floor Data Capture	Bill of Materials	Routing
Inventory	Warehousing	Cost Control
Quality Management	Product Lifecycle Management	Versions
D365 Supply Chain Co Pilot	Power BI embedded reporting	Subcontracted Work
	Visual Planning	

HCLTech Accelerate for Manufacturing can be implemented as a standalone manufacturing solution on top of Dynamics 365 Finance with all the in-scope functions listed above.

Alternatively, if your organization's objective is to establish a fully functional foundation for an expanded solution that eventually spans your entire business, Accelerate for Manufacturing's in-scope components are precisely what you need to build that strong base.

Why Choose HCLTech?

HCLTech are a one of the largest and most successful CRM and ERP partners in the Microsoft ecosystem, our award-winning holistic approach is built around improving the ROI of our clients' Microsoft investment through:

- Exceptional implementation service delivery
- One of the largest support desks in the partner channel
- Commitment to providing education on the Microsoft technology stack, including product training, change management and adoption and sustainment programs
- Powerful IP, including add-on tools and extensions that leverage Power Platform as well as Dynamics 365 deployment accelerators like Accelerate for Finance and Accelerate for Manufacturing

Simply, HCLTech offers end-to-end solutions that help organizations increase productivity, streamline business processes and build better customer relationships.

Let's Get Started

Is your business considering a digital transformation with Microsoft Dynamics 365 Finance and Supply Chain Management? Our Manufacturing solution experts are ready to help. HCLTech has a proven track record for developing powerful accelerator tools for Dynamics 365 implementations - this accelerator is arguably our most robust and far-reaching tool yet, so our team is genuinely excited to demonstrate it for you.

HCLTech | Supercharging
Progress™

HCLTech Accelerate for Manufacturing

Deploy Microsoft Dynamics 365 Finance
& Supply Chain Management in less than
5 months

HCLTech | Supercharging
Progress™

hcltech.com



HCLTech is a global technology company, home to 211,000+ people across 52 countries, delivering industry-leading capabilities centered around Digital, Engineering and Cloud powered by a broad portfolio of technology services and software. The company generated consolidated revenues of \$11.79 billion over the 12 months ended June 30, 2022. To learn how we can supercharge progress for you, visit hcltech.com.

HCLTech Accelerate for Manufacturing

Manufacturing organizations continue to face critical challenges in deploying and scaling software solutions that support digital transformation. Legacy systems and manual data-entry hinder real-time decision making while lack of integration between IT and OT systems results in fragmented data silos and limited visibility across organizations. Despite the availability of unified platforms like Microsoft Dynamics 365, many organizations report delayed ROI and underutilized digital capabilities.

At HCLTech we don't just deploy software, we build solutions to problems. HCLTech Accelerate for Manufacturing is our pre-built solution designed to get manufacturing organizations like yours, live on the core manufacturing system within Microsoft Dynamics 365 Finance & Supply Chain Management in just 5 months.



Can my business truly get from 'Go Ahead' to 'Go Live' in just 18 weeks?

Absolutely, you can. But you don't have to take our word for it – here's a visual timeline of a typical deployment done with Accelerate for Manufacturing:



Together, HCLTech's proven process for Dynamics 365 implementations and our lightning-fast Manufacturing Accelerator enable a seamlessly speedy deployment.

In-Scope Manufacturing Functions

MRP	Production Orders	Manufacturing Execution
Shop Floor Data Capture	Bill of Materials	Routing
Inventory	Warehousing	Cost Control
Quality Management	Product Lifecycle Management	Versions
D365 Supply Chain Co Pilot	Power BI embedded reporting	Subcontracted Work
	Visual Planning	

HCLTech Accelerate for Manufacturing can be implemented as a standalone manufacturing solution on top of Dynamics 365 Finance with all the in-scope functions listed above.

Alternatively, if your organization's objective is to establish a fully functional foundation for an expanded solution that eventually spans your entire business, Accelerate for Manufacturing's in-scope components are precisely what you need to build that strong base.