

# TECHNICAL SPECIFICATIONS

# turkis

turkis is a musical meeting point, where horizons expand and traditions find new life. With festival history, starting from det turkise telt in 2010, we're now in a new leap, presenting new currents within a new and forever immersive venue.

GENERAL INFO	02
VENUE	05
SOUND & POWER	07
LIGHTS & BACKLINE	08

# GENERAL INFO

## contact & crew

**Booking** / **Baris Citirikkaya & Mie Jakobsen**

booking@detturkisetelt.dk

**Production** / **Albert Ehlers**

albert@detturkisetelt.dk

**Tech** / **Malte Martin**

tech@detturkisetelt.dk

**PR** / **Iben Bredholdt**

pr@detturkisetelt.dk

**Finance** / **Thomas Beyer**

thomas@detturkisetelt.dk

**Office phone** / +45 71 79 04 26

we're a small **employed** office. concertevenings are run with lovely and dedicated help from **volunteers** - this includes artist host, entrance, bar and stagelight.

## location

**turkis**

Vester Allé 15  
8000 Aarhus C  
Denmark

11 min walk  
from the train  
station  
*Aarhus*  
*Hovedbanegård*

or the bus station  
*Aarhus*  
*Rutebilstation*

**turkis**



Aarhus  
Hovedbanegård  
(TRAIN)

Aarhus  
Rutebilstation  
(BUS)

# parking & load-in

From **Vester Allé**, turn into Museumsgade. Our staff or volunteers will help with the needed parking license upon arrival.



## backstage/office entrance

You'll find the door  
In the corner

## load-in to stage

Opens from the inside.



# backstage

We have two rooms, both painted with natural colours, fitted with couches and chairs. A bathroom with shower and toilet each.

HYBRID HOME



ROOM OF ROOTS



## food & drinks

A hot and vegan meal is brought from our local friends in the city. We serve drinks in the backstage fridge. Coffee, tea and snacks are provided. Any drinks from the turkis venue bar is kindly self-paid.

## merchandise

We have a table and a desk lamp for setting up your merch. We prefer that you bring your own payment system, otherwise turkis staff can help with setting up a payment system through turkis, of which the revenue can be invoiced to turkis afterwards.

# VENUE

## the room &

## experience elements

We aim to create an organic room that feels like home by being inviting, appealing to curiosity of past memories and inspiring. Our floors are covered in Persian carpets. We have a raised sitting area with pillows and mattresses, and also a large bookcase where we have books, gifts, and small pictures!

**Max capacity** is 300 standing and 200 -250 seated

We have **boxes** that can be placed around the floor for seating, to create intimate atmospheres. Some boxes are modified to hold **sails** for making the room smaller or bigger. In the ceiling above the audience area we have a **curtain system** that can be raised and lowered to accommodate the vibe and needs of each individual concert. Our **bar** is covered in southern tiles and filled with handpicked beverages and Turkish tea. Every Sunday is alcoholfree.

We love when different events reshape our venue and work with experiencedesign.

## NEXT PAGES HAS A PHOTO COLLAGE :-)

*OBS. the photos are from 2021, the room has many of the same qualities today but are improved since. The photos are taken with the cleaning lights on. At events we can create cozy and warm atmosphere with our ricepaper lamps, fairylights and stage lamps.*



STAGEVIEW



BOXES



SIDEVIEW



SAILS



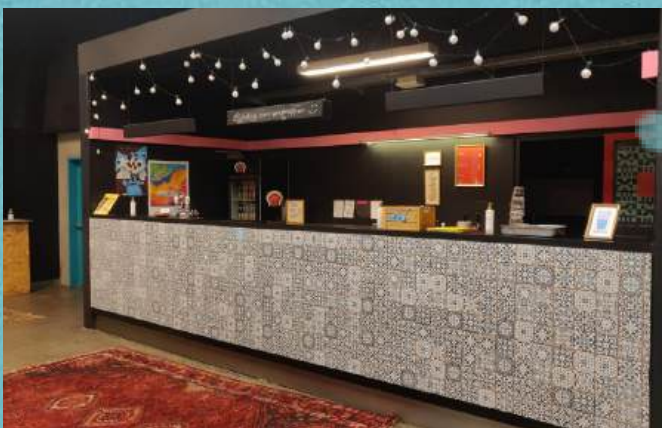
FRONT OF HOUSE VIEW



CURTAIN SYSTEM



BAR



PROJECTOR CANVAS



# SOUND

## Noise regulations:

103 dB(a) over 15 min" Measured at FOH.

## Main PA:

- 6 x Coda N-Aps - 3 pr. side (Linear ray Configuration)
- 2 x Coda U4 18' Subs - 1 pr. side

## Monitors (6 sends):

- 8 x Turbosound TFM-420 Monitor
- 3 x Lab C28:4 Quad Amps
- 3 x T.C Electronics XO-24 Digi Crossover

## Front of house:

- Digico SD-8 24 with overdrive software
- Digico 48/8ch Madirack (Onstage)

## Microphones:

- 1 x D6
- 1 x Beta 52
- 4 x Audix F9
- 4 x Sennheiser 604
- 8 x SM 57
- 4 x AKG 214
- 2 x Sennheiser 421
- 8 x Sure Beta58A
- 14 x LD Systems DI
- 2 x DPA4099

## Mic stands:

- 12 x Long boom stand
- 8 x Short round boom stand
- 2 x Short Xfoot boom stand

## Stage risers:

- 2 x 1x2m podiums
- 8 x 20cm legs
- 8 x 40cm legs
- 8 x 60-100cm variable legs
- 1 x black molton riser cover (for 40 cm legs)

## Mobile PA system:

- 1 x Midas M32R
- 1 x Midas DL32
- 1 x 50 m. CAT5e
- 2 x Turbosound NuQ152-AN top
- 2 x Turbosound NuQ118B-AN sub
- 6 x Turbosound TFX122M-AN monitors

# POWER

Power Available on **stage left**.

- 1 x 128/3a
- 1 x 64/3a
- 1 x 32/3a
- 2 x 16/3a

# LIGHTS

## Lamps:

- 6 x Robe 150 wash (Stagelight)
- 4 x Robe Parfect 100 (Frontlights)
- 6 x Camero Auro Spot z300 (Profiles)

## Hazer:

- Swefog K1

## Lightning desk:

- Avolites Quartz

## Backdrop truss:

- 1 x Movable truss for backdrop (Contains lamps)

## Stage:

- W x D x H x Clearance  
7,8 x 6 x 0,56 x 4 meters

- 3 x Transverse metal I-beams as riggingpoints over the stage, with 3,25 m distance between them and 4,5 m between stagefloor and beam.

## Visuals:

- 4 x Overhead projectors for analog visuals & liquid light show (if wished, it is to be operated by our volunteers)
- 1 x Big, non-movable 10.000 ANSI lumen projector, connectable from stage and FOH with USB-C adaptor to HDMI.

## Extra:

- 2 x Sheetstands
- 1 x Nebula Mars II Pro projector 500 ANSI lumen

Sufficient for meetings and small presentations.

# BACKLINE

## Drums:

- Yamaha Tour Custom Maple 22inch Kick
- 10 inch Tom
- 12 inch Tom
- 16 inch tom
- Yamaha Hardware 700 Series Hi hat stand
- 2 x Snare stand
- 3 x Cymbal stands
- Pedal FP8500
- Yamaha drum chair
- Zildjian 14+17+21 /A
- Pearl 14x6,5 Maple sensiton snare

## Bass:

- 1 x Tone hammer 750 bas amp
- 1 x Ampeg SVT-410HLF

## DJ equipment:

- 1 x Pioneer DJM900NXS2
- 2 x Pioneer CDJ2000NXS2
- 1 x Linkhub

## Guitar:

- 1 x Vox AC30 C2 Combo
- 1 x Fender Twin Reverb Combo
- 2 x GTR stands

## Keys:

- 1 x Nordstage 3 76 key Hammer action
- 1 x Sustain pedal
- 1 x Piano bench
- 1 x X stand
- 1 x Keystand with two tier adapter for synth
- 1 x Yamaha grand piano (not newly tuned)